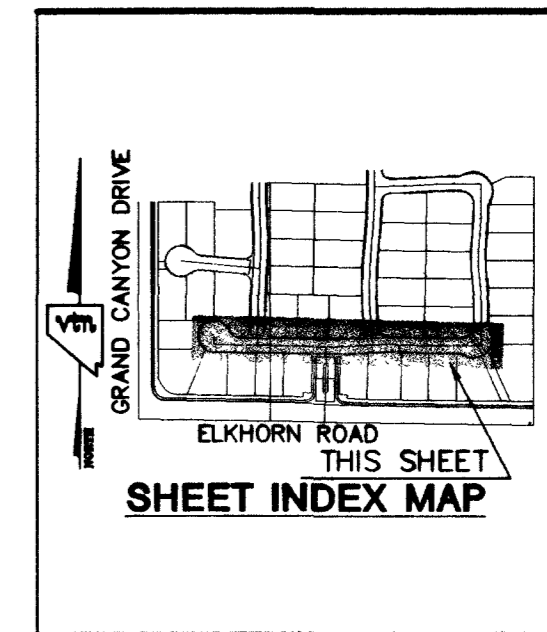
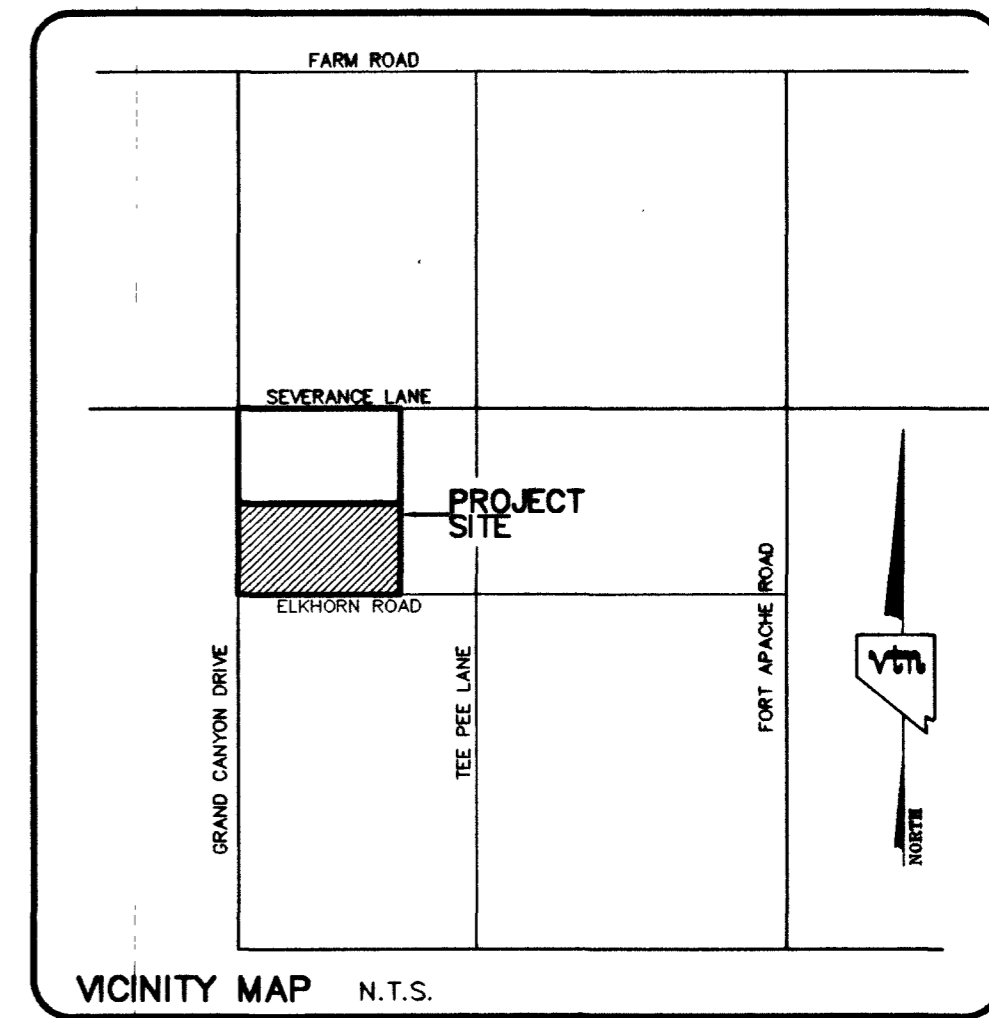
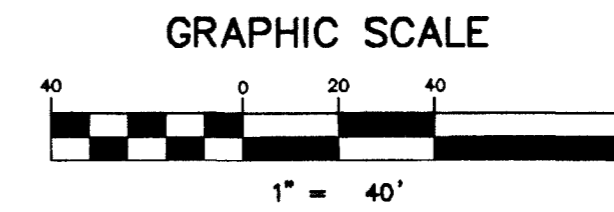


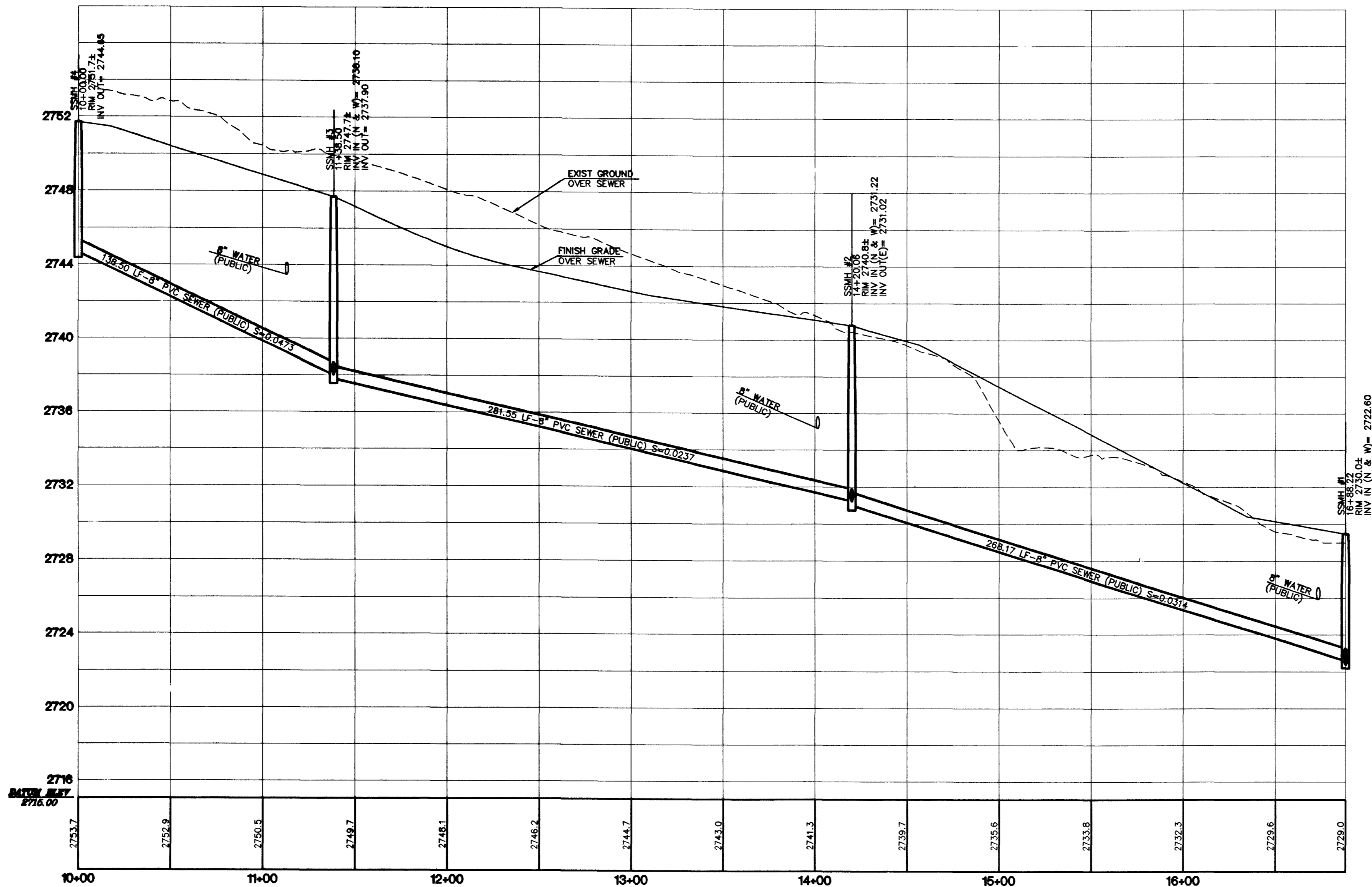
**PRIVATE STREET NOTE:**  
ALL PRIVATE STREETS ARE PUES CLV SEWER ESMTS.  
& PUBLIC DRAINAGE ESMTS. TO BE PRIVATELY MAINTAINED.

# PARKMOOR AVENUE

**SEWER EASEMENT**  
SEE SHEET SS2



**CONTRACTOR NOTE:**  
CONTRACTOR SHALL VERIFY HORIZONTAL AND VERTICAL LOCATION OF EXISTING UTILITIES AND NOTIFY THE DESIGN ENGINEER IMMEDIATELY OF ANY DISCREPANCIES PRIOR TO CONSTRUCTION.



**BENCHMARK**  
PROJECT DATUM: NORTH AMERICAN VERTICAL DATUM OF 1988 (NAVD88)

PROJECT BENCHMARK: CLARK COUNTY BENCHMARK 109030N4  
NAVD88 ELEVATION: 819.508 METERS (2688.67 FEET)

RIVET AND SQUARE ALUMINUM PLATE IN THE SOUTHEAST CORNER OF A ELECTRICAL CABINET BASE (#00720), 200 FT. SOUTH AND 40 FT. WEST CENTENNIAL PKWY. AND GRAND CANYON DR.

**BASIS OF BEARING**

THE BASIS OF BEARINGS FOR THIS PROJECT IS NORTH 00°06'46" WEST BEING THE WEST LINE OF THE SOUTHWEST QUARTER (SW 1/4) OF THE SOUTHEAST QUARTER (SE 1/4) OF SECTION 18, TOWNSHIP 19 SOUTH, RANGE 60 EAST, M.D.M., CLARK COUNTY, NEVADA, AS SHOWN ON A RECORD OF SURVEY ON FILE IN THE CLARK COUNTY, NEVADA, RECORDER'S OFFICE, IN FILE 114 AT PAGE 57.

Avoid cutting underground utility lines. If you do, call 1-800-227-2600

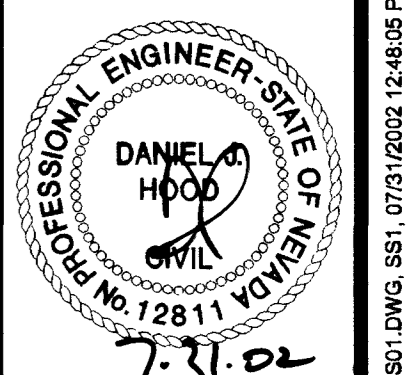
Avoid overhead power line contact. If you do, call 1-702-593-6111

REV	DATE	BY	REVISION

**PERMA-BILT HOMES**  
CITY OF LAS VEGAS, NEVADA  
2727 SOUTH RAINBOW BOULEVARD LAS VEGAS, NEVADA 89146-5148  
7150 POLLOCK DRIVE, SUITE 104  
LAS VEGAS, NEVADA 89119  
PH. (702) 873-7550 FAX (702) 882-2597  
nevadadiv.com  
PLANNERS • LAND SURVEYORS • CONSULTING ENGINEERS

**SEWER PLAN AND PROFILE**  
PARKMOOR AVENUE  
**ELKHORN/GRAND CANYON**

DRAWN BY:	MARCH, 2002
DESIGNED BY:	MARCH, 2002
CHECKED BY:	MARCH, 2002
PROJECT NO.:	SCALE: 1"=40' HORIZ. 1"=4' VERT.



SHEET  
**SS1**  
18 OF 27 SHEETS  
DRAWING NO.  
3074-4734-1