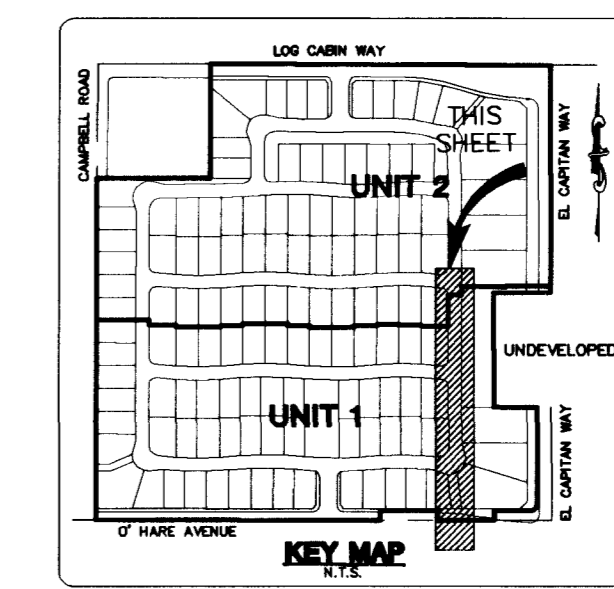
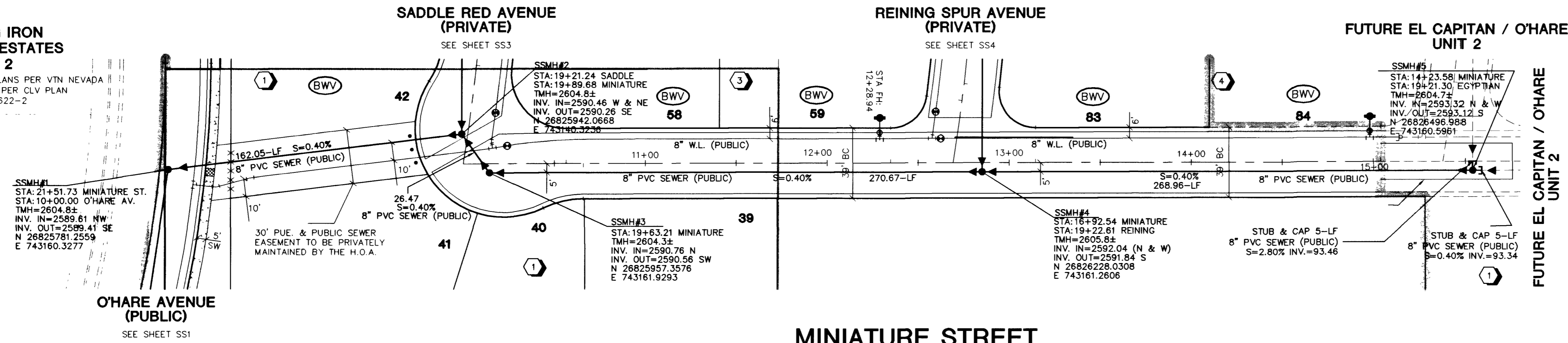
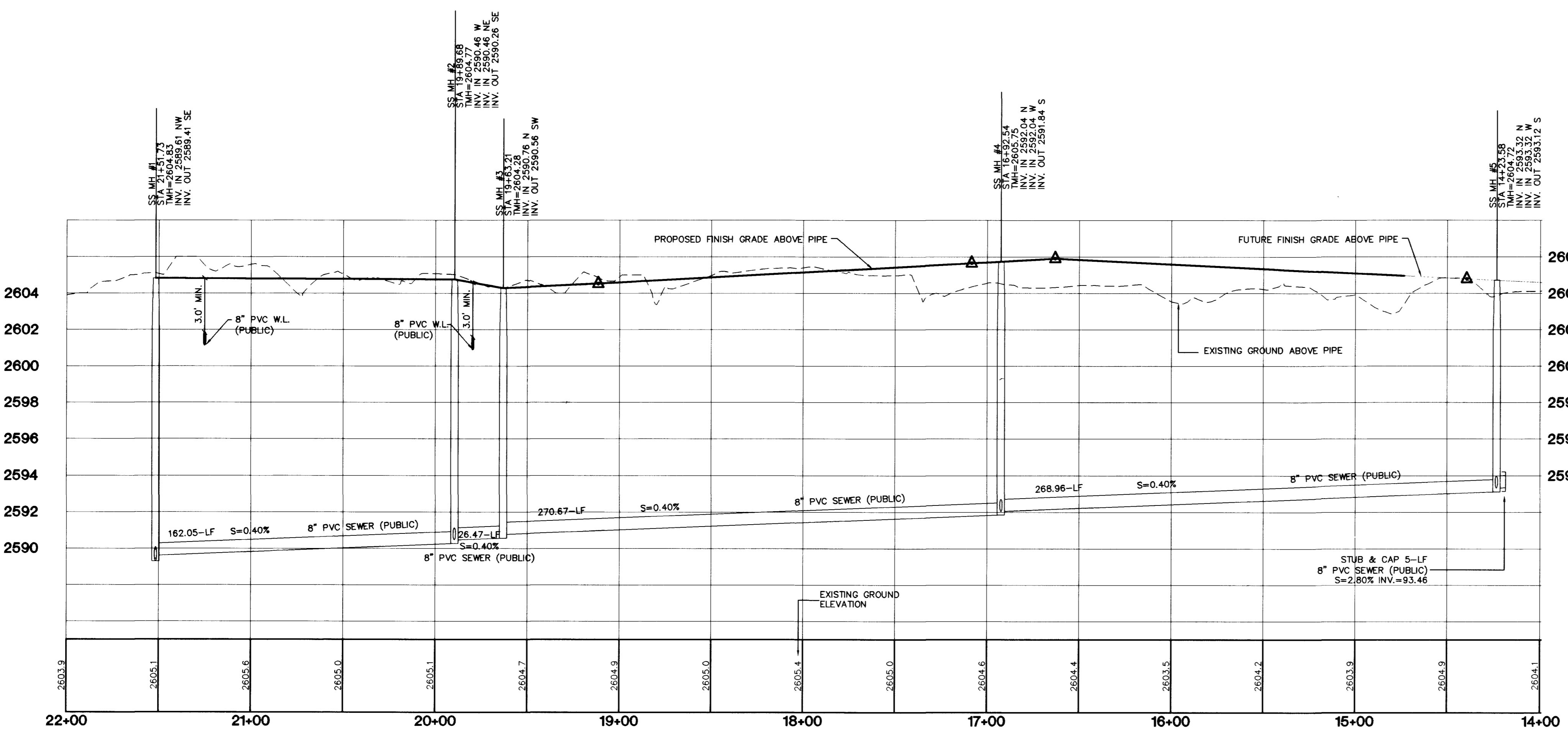
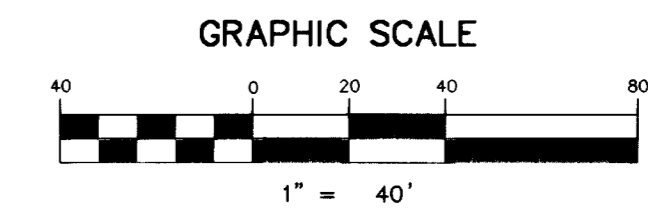


**EXISTING IRON MOUNTAIN ESTATES UNIT 2**  
 REFER TO IMPROVEMENT PLANS PER VIN NEVADA BOOK 92 PAGE 17 PER CLV PLAN No. 107Y-4622-2



**MINIATURE STREET (PRIVATE)**

PROFILE SCALE:  
 HORIZ. 1" = 40'  
 VERT. 1" = 4'



**BASIS OF BEARING**  
 NORTH 89°48'22" WEST - BEING THE BEARING OF THE NORTH LINE OF THE SOUTHWEST QUARTER (SW 1/4) OF SECTION 5, TOWNSHIP 19 SOUTH, RANGE 60 EAST, M.D.M., CLARK COUNTY, NEVADA, AS SHOWN BY THAT PLAT ON FILE IN THE OFFICE OF THE COUNTY RECORDER, CLARK COUNTY, NEVADA, IN BOOK 92 OF PLATS, AT PAGE 17.

**BENCHMARK**  
 CITY OF LAS VEGAS BENCHMARK 8LV90-8NES  
 NAVD88 ELEV. 771.9469 METERS (2532.63 FEET)  
 BLM BRASS CAP LOCATED AT DURANGO DRIVE AND IRON MOUNTAIN ROAD.

NOTE: CONTRACTOR SHALL VERIFY HORIZONTAL AND VERTICAL LOCATION OF EXISTING UTILITIES AND NOTIFY THE DESIGN ENGINEER IMMEDIATELY OF ANY DISCREPANCIES PRIOR TO CONSTRUCTION.

Avoid overhead power line contact. It's costly.  
**Call before you Overhead**  
 1-702-593-6111

Avoid cutting underground utility lines. It's costly.  
**Call before you Dig**  
 1-800-227-2600

**PRIVATE STREET NOTE**  
 PRIVATE STREETS ARE P.U.E.'S, CLV PUBLIC SEWER EASEMENTS, AND PUBLIC DRAINAGE EASEMENTS TO BE PRIVATELY MAINTAINED.

**STERLING S. DEVELOPMENT**  
 CITY OF LAS VEGAS, NEVADA  
 5385 S. CAMERON STE. # 200  
 LAS VEGAS, NEVADA 89119  
 (702) 871-5555

2727 SOUTH RAINBOW BOULEVARD LAS VEGAS, NEVADA 89146-5148  
 PH. (702) 873-7550 FAX (702) 362-2597  
 nevada CONSULTING ENGINEERS • PLANNERS • LAND SURVEYORS

**SEWER PLAN & PROFILE**  
 MINIATURE STREET  
 STA: 14+23.59 - 21+5174

**EL CAPITAN / OHARE UNIT 1**

DRAWN BY:  
 DESIGNED BY:  
 CHECKED BY:  
 PROJECT NO.: 6018

SCALE: 1"=40' HORIZ.  
 1"=4' VERT.

EXPIRES 6/30/03

PROFESSIONAL ENGINEER STATE OF NEVADA  
 CIVIL  
 No. 13956

SHEET  
**SS6**  
 25 OF 31 SHEETS  
 DRAWING NO.  
 3074-4732-1

46437