

Call before
you Dig
1-800-227-2600

Call before
you Overhead
1-702-593-6111

SEWER CONSTRUCTION NOTES

- ◆ INSTALL 18" SEWER MAIN TRENCH SECTION BACKFILL PER D.C.S.W.C.S. NO. 30-18
- ◆ INSTALL 48" SANITARY SEWER MANHOLE PER DESIGN AND CONSTRUCTION STANDARDS FOR WASTEWATER COLLECTION SYSTEMS PLATE 30-1
- ◆ REMOVE CAP & CONNECT TO EXISTING STUB
- ◆ INSTALL 18" CAP

BASIS OF BEARING

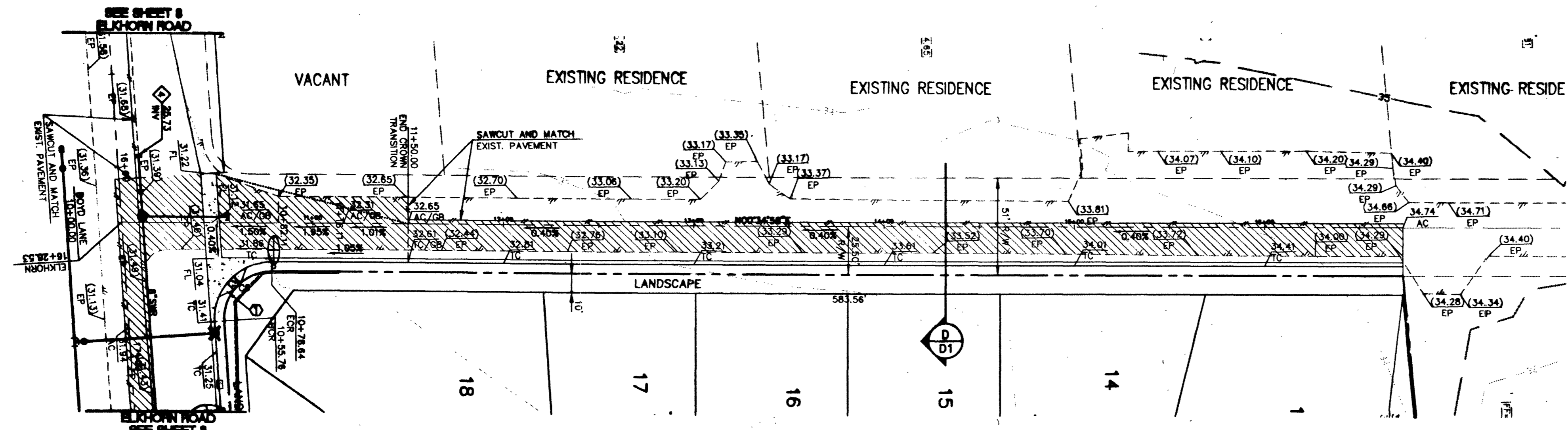
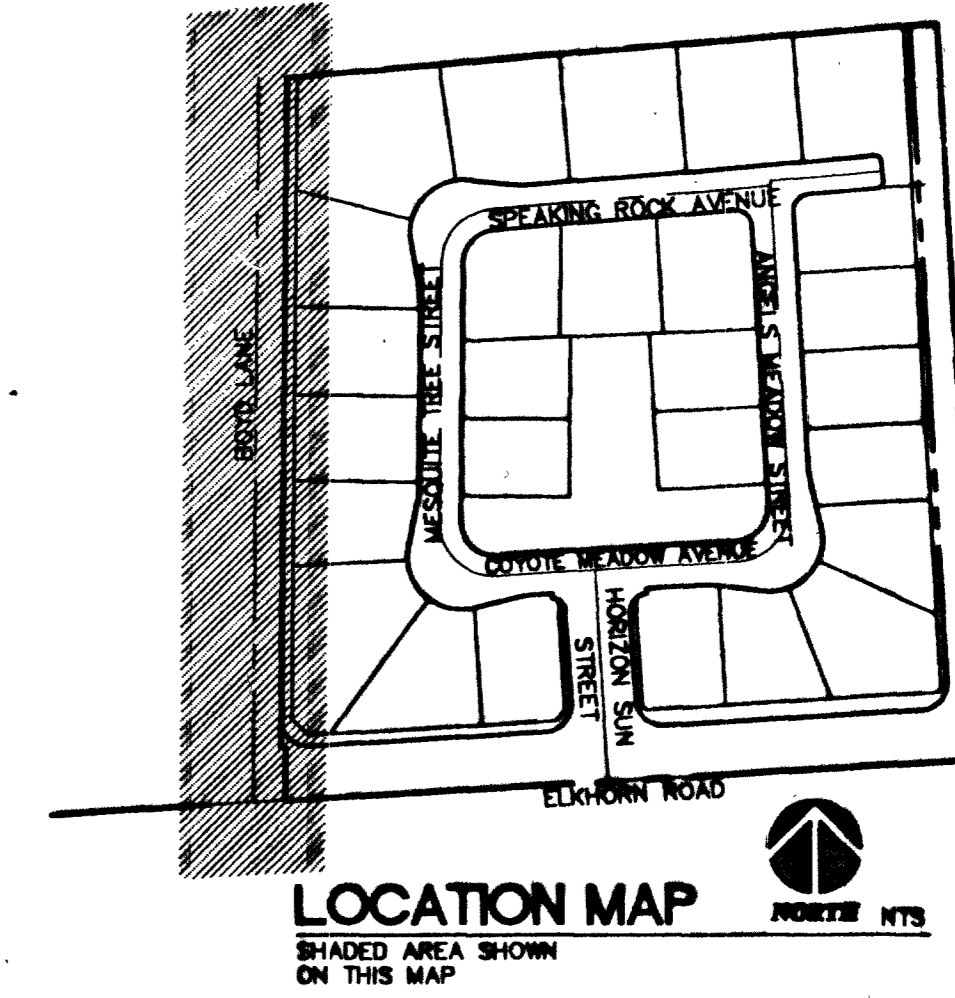
BEING THE NORTH LINE OF THE LOT 63, AS IT IS SHOWN ON THE RECORD OF SURVEY IN FILE 52, OF SURVEYS, PAGE 70, OFFICIAL RECORDS OF CLARK COUNTY, NEVADA, WHICH BEARS: SOUTH 85°04'37" WEST.

BENCHMARK

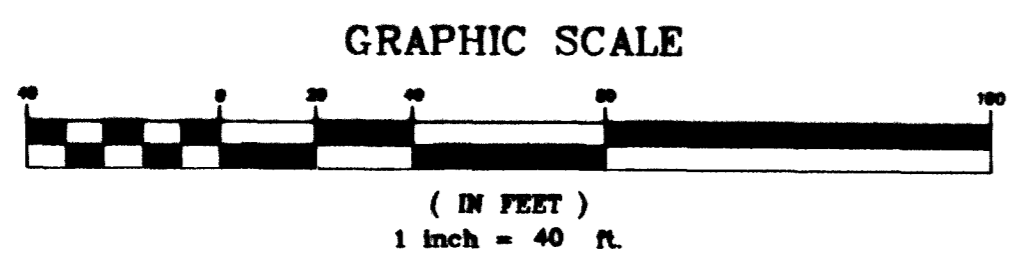
BEING THE CITY OF NORTH LAS VEGAS BM, #518118 (11V90-13E4), 50' WEST OF BLUE BRASS CAP @ DECATUR BLVD. & FARM ROAD. ELEVATION = 707.9639 METERS = 2,322.71 FEET, (M.A.V.D. 1988) (ELEVATION BASED ON CITY OF LAS VEGAS VERTICAL DATUM)

Sidewalk Ramp Table		
No.	A	B
(1)	8.0'	8.0'

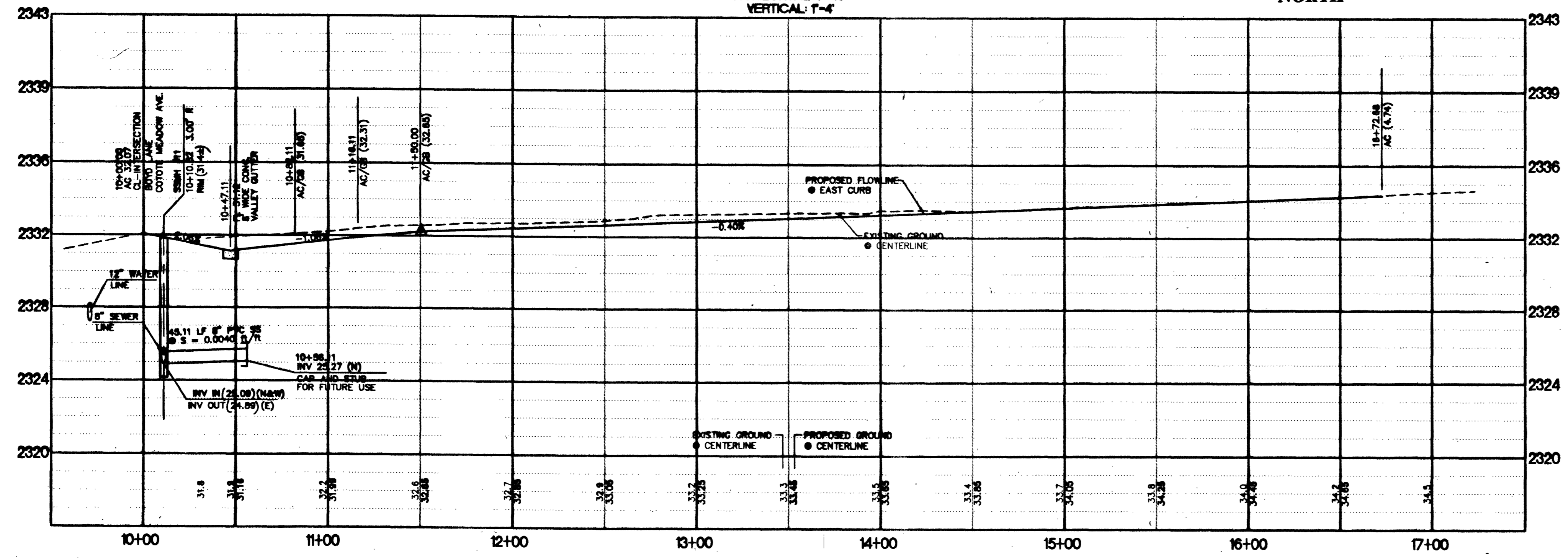
Curve Table				
No.	Length	Radius	Tangent	Delta
C5	49.18'	30.00'	32.13'	93°55'22"
C6	40.98'	25.00'	26.77'	93°55'22"



PLAN VIEW



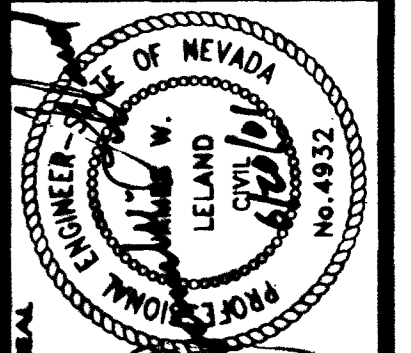
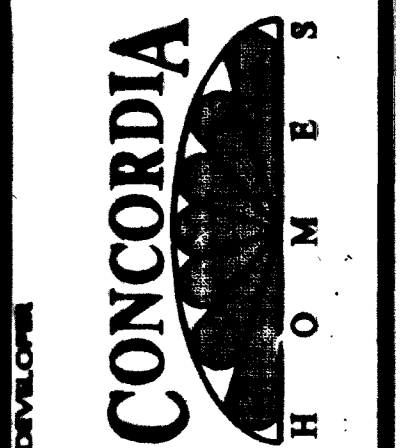
PROFILE VIEW
BOYD LANE
(PUBLIC)
HORIZONTAL: 1"=40'
VERTICAL: 1"=4'



AS-BUILT

SCALE	AS NOTED	JOB No.	PROJECT DATE
		01-9005-03	03-2001

CONCORDIA ENGINEERING II
PLAN AND PROFILE
BOYD LANE



6280 S. Valley View Blvd
Suite 200
Las Vegas, NV 89118
Tel: (702) 468-0068
Fax: (702) 468-0047



SHEET
PP2
7 OF 11
AGENCY DWG. NO.
307Y-1674