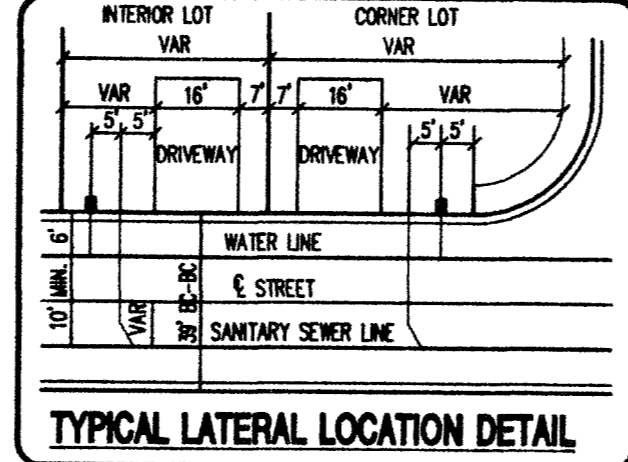


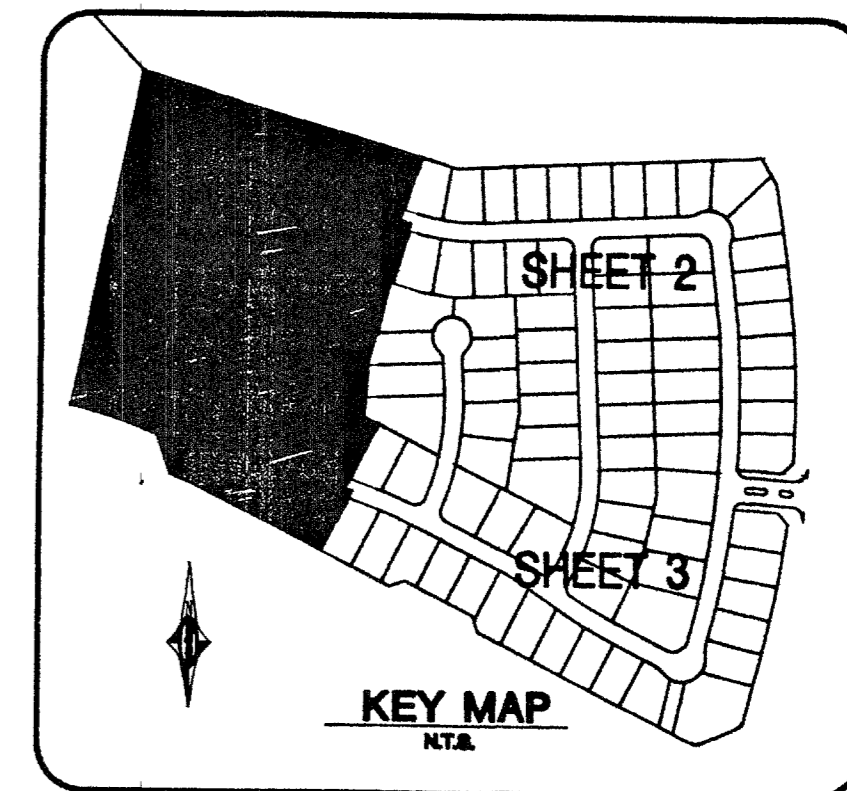
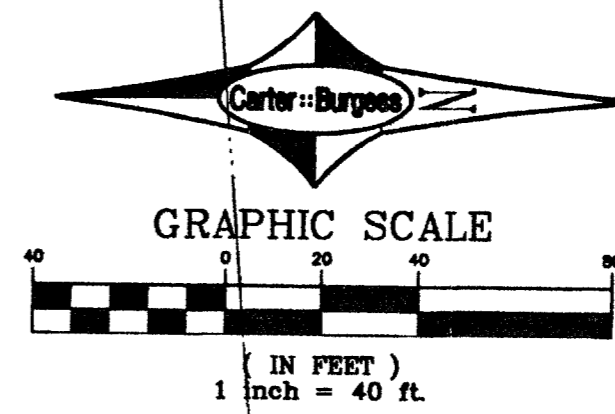
Call before you Dig.
1-800-227-2600
UNDERGROUND SERVICE ALERT (USA)

Call before you Overhead.
593-6111
OVERHEAD SERVICE ALERT

EASEMENT NOTE:
ALL STREETS HERE ARE DESIGNATED AS PRIVATE STREETS, PUBLIC UTILITY EASEMENTS, C.L.V. SEWER EASEMENTS, PUBLIC DRAINAGE EASEMENTS TO BE PRIVATELY MAINTAINED UNLESS OTHERWISE NOTED. SEE FINAL MAP OF ESTANCIA AT THE VISTAS IN SUMMERLIN.



BUILDING INFORMATION
TYPE OF CONSTRUCTION: TYPE V-NR
TOTAL SQUARE FOOTAGE: <3,600 SQ. FT.
NUMBER OF STORIES: 2 STORY
BUILDING USE: RESIDENTIAL
SPRINKLERED: NON-SPRINKLERED



PARCEL 'CC' (FUTURE BY OTHERS)

LEGAL DESCRIPTION

ALL THAT PORTION OF LOT 7, BLOCK C AS SHOWN BY MAP THEREOF ON FILE IN BOOK 98, PAGE 11 OF PLATS IN THE CLARK COUNTY RECORDERS OFFICE, CLARK COUNTY, NEVADA, LYING WITHIN SECTIONS 26 AND 35, TOWNSHIP 20 SOUTH, RANGE 59 EAST, CITY OF LAS VEGAS, CLARK COUNTY, NEVADA.

BASIS OF BEARING

NORTH 89° 54' 38" EAST BEING THE SOUTH LINE OF THE SOUTHEAST QUARTER OF SECTION 35, T. 20 S., R. 59 E., M.D.M. AS SHOWN BY THE AMENDED MAP IN FILE 93, PAGE 95 OF SURVEYS, IN THE CLARK COUNTY RECORDERS OFFICE.

BENCHMARK

NDOT BRASS REFERENCE CAP, 50.00 FEET NORTH OF STATION 787+19.42 OF CHARLESTON BLVD. (No. OLV09-34S56), 3209.81 FEET (NAVD 1988 DATUM)
3207.61 FEET (SUMMERLIN DATUM)

WATER CONSTRUCTION NOTES

- ① FIRE HYDRANT ASSEMBLY PER UDACS PLATE 7 (INCLUDES TEE AND GATE VALVE).
- ② INSTALL 6" CAP & 2" BLOW OFF ASSEMBLY PER UDACS PLATE 4.
- ③ 8" x 8" x 8" TEE PER UDACS PLATE 5
- ④ 8" GATE VALVE
- ⑤ 8" x 6" REDUCER
- ⑥ 8" 45° BEND PER UDACS PLATE 5
- ⑦ 8" - 22-1/2" BEND PER UDACS PLATE 5
- ⑧ 8" - 11-1/4" BEND PER UDACS PLATE 5
- ⑨ 1" WATER SERVICE WITH 3/4" METER PER UDACS PLATE No 1B.
- ⑩ IRRIGATION AND POWER CONDUIT, 2-4" & 1-6" SCH. 40 PVC CONDUIT
- ⑪ 1" WATER SERVICE WITH 1" METER AND RPPA PER UDACS PLATES 1D & 11A.
- ⑫ 1" WATER SERVICE WITH 1" METER PER UDACS PLATE 1D.

CONSTRUCTION NOTES

- ① INSTALL 2-12" D3 STREET NAME SIGNS AND 1-36" R1-1 STOP SIGN.
- ② INSTALL 2-9" D3 STREET NAME SIGNS AND 1-30" R1-1 STOP SIGN.

BACKWATER VALVES (BWV)

THE FOLLOWING LOTS REQUIRE SEWER BACKWATER VALVES.
LOTS : 7-9, 11-13, 16-18, 21, 22, 35-39, 41, 42, 44-49, 52-56, 60-63, 71, 79, 81, 82, 84-88, 103-105, 116, AND 117.

SEWER CONNECTION NOTE:

ONE OR MORE SEGMENTS OF THE DOWNSTREAM SEWER SYSTEM THAT WILL SERVE THIS PROJECT HAS NOT BEEN COMPLETED AND/OR ACCEPTED FOR MAINTENANCE BY THE CITY OF LAS VEGAS. ANY WORK DONE ON THIS PROJECT PRIOR TO THE COMPLETION AND/OR ACCEPTANCE OF THE DOWNSTREAM SEWER SYSTEM(S) SHALL BE DONE AT THE DEVELOPER'S OWN RISK. THE CITY OF LAS VEGAS RESERVES THE RIGHT TO PREVENT THE PHYSICAL CONNECTION OF THIS PROJECT INTO THE DOWNSTREAM SEWER SYSTEM UNTIL ALL SEGMENTS HAVE BEEN COMPLETED AND ACCEPTED FOR MAINTENANCE, OR UNTIL SUCH TIME AS THEY ARE DEEMED AVAILABLE FOR SERVICE.

REDUCED PRESSURE PRINCIPLE ASSEMBLY (RPPA)

APPROVED REDUCED PRESSURE PRINCIPLE ASSEMBLY(S) SHALL BE INSTALLED PER THE UDACS PLATE NO. 11A. NO WATER SHALL BE TAKEN FROM A SERVICE REQUIRING BACKFLOW PREVENTION UNTIL THE REDUCED PRESSURE PRINCIPLE ASSEMBLY HAS BEEN SUCCESSFULLY TESTED BY THE LVWD.

ANY BLOCK WALL OR OTHER FENCE MATERIAL SHALL BE DESIGNED AND CONSTRUCTED AROUND THE OUTSIDE OF THE EASEMENT(S) TO ALLOW THE DISTRICT DIRECT ACCESS FROM THE ADJACENT RIGHT-OF-WAY. EASEMENTS SHALL BE CLEARLY MARKED OR STAKED PRIOR TO THE START OF CONSTRUCTION.

PRV NOTE:

THIS PROPERTY MAY HAVE STATIC WATER PRESSURE IN EXCESS OF 80 PSI. THE UNIFORM PLUMBING CODE REQUIRES THAT INDIVIDUAL, ON-SITE (PRIVATE), PRESSURE REDUCING VALVES BE INSTALLED WHENEVER THE PRESSURE EXCEEDS 80 PSI. PRVS ARE THE DEVELOPER'S RESPONSIBILITY AND WILL NOT BE INSPECTED OR INCLUDED IN THE ACCEPTANCE OF LVWD FACILITIES.

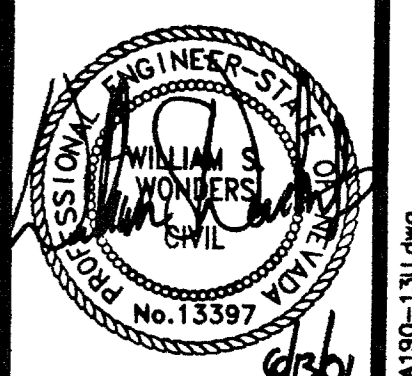
APPROVALS

APPROVAL OF THESE PLANS SHALL NOT BE CONSTRUED TO BE A PERMIT FOR OR AN APPROVAL OF ANY VIOLATION OF ANY OF THE PROVISIONS OF THE STATE OR COUNTY LAWS. 6/19/01 DATE

CLV FILE: [Signature] DATE: 6/19/01
LAS VEGAS VALLEY WATER DISTRICT DATE: 8/13/11

WOODSIDE HOMES
ESTANCIA • THE VISTAS
PARCEL BB • SUMMERLIN V-20
UTILITY, STREETLIGHT AND SIGNAGE PLAN / 1 OF 3
Carter Burgess
6655 Bermuda Road
Las Vegas, NV 89119
(702) 508-5400 Fax (702) 508-5454
CONSULTANTS IN PLANNING, ENGINEERING, CONSTRUCTION MANAGEMENT, AND RELATED SERVICES
WESTERN STATES CONTRACTORS
DIMS FEE

SCALE: 1"=40' HORIZ. VERT.
PROJECT NO: 240190
DRAWN BY: J.L.
DESIGNED BY: J.L.
CHECKED BY: M.S.W.



SHEET 13 OF 17 SHEETS
CLV DRAWING NO. 3074-4673

PARCEL 'AA' (BY OTHERS)

MATCHLINE SEE SHEET 14

MATCHLINE SEE SHEET 15

PROJECT NAME: Estancia @ The Vistas
This project water plan complies with the Las Vegas Valley Water District's technical requirements. However, this water plan is

NOT APPROVED FOR CONSTRUCTION
at this time and this signature does not provide or imply a water commitment.

LVWD #52 DATE: 6-15-11

33335 38955 99027

-SEWER ASSEMBLY-