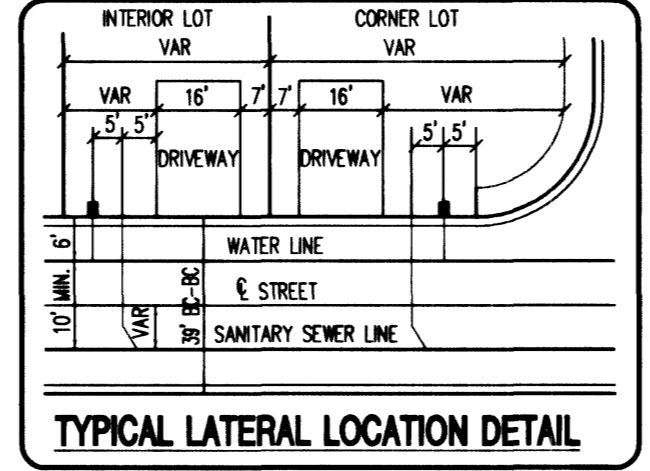


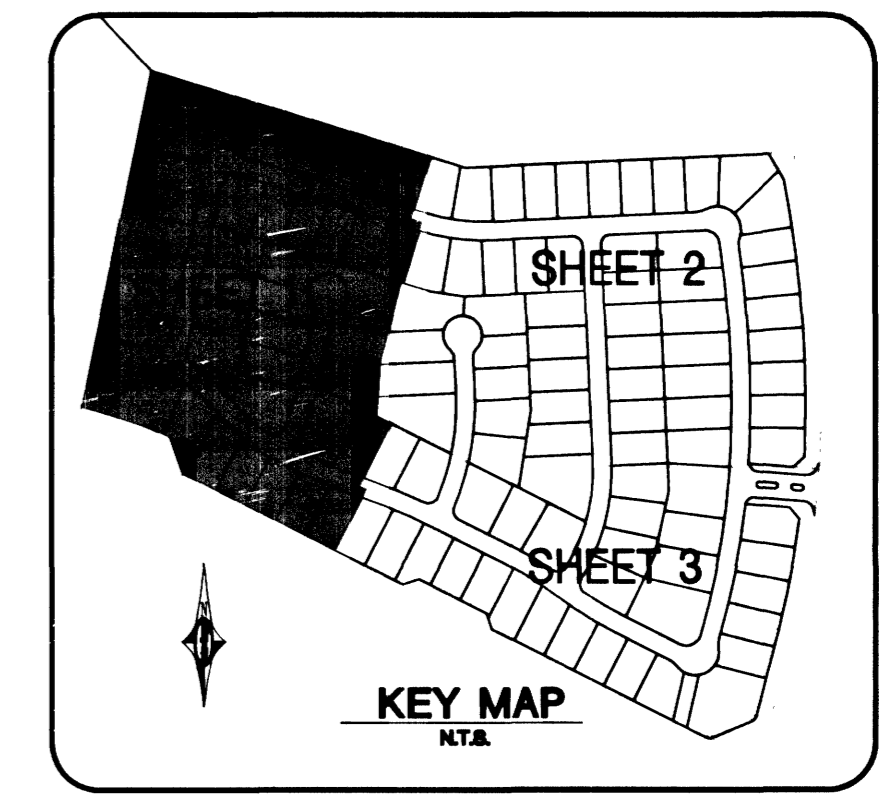
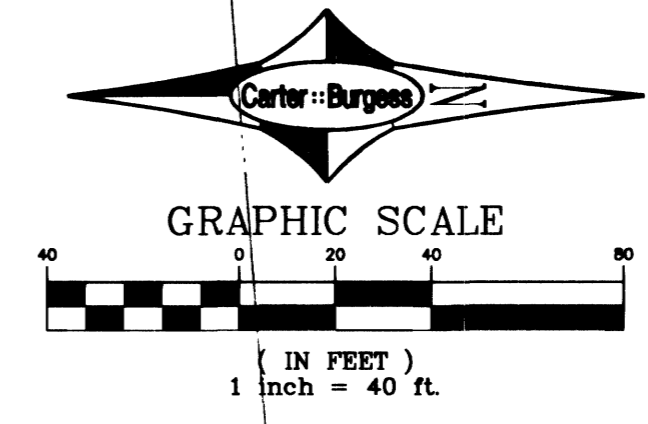
Call before you Dig.  
1-800-227-2600  
UNDERGROUND SERVICE ALERT (USA)

SAFETY ALERT  
Call before you Overhead.  
593-6111  
OVERHEAD SERVICE ALERT

**EASEMENT NOTE:**  
ALL STREETS HERE ARE DESIGNATED AS PRIVATE STREETS, PUBLIC UTILITY EASEMENTS, C.L.V. SEWER EASEMENTS, PUBLIC DRAINAGE EASEMENTS TO BE PRIVATELY MAINTAINED UNLESS OTHERWISE NOTED. SEE FINAL MAP OF ESTANCIA AT THE VISTAS IN SUMMERLIN.



**BUILDING INFORMATION**  
TYPE OF CONSTRUCTION: TYPE V-NR  
TOTAL SQUARE FOOTAGE: <3,600 SQ. FT.  
NUMBER OF STORIES: 2 STORY  
BUILDING USE: RESIDENTIAL  
SPRINKLERED: NON-SPRINKLERED



PARCEL 'CC' (FUTURE BY OTHERS)

**LEGAL DESCRIPTION**

ALL THAT PORTION OF LOT 7, BLOCK C AS SHOWN BY MAP THEREOF ON FILE IN BOOK 98, PAGE 11 OF PLATS IN THE CLARK COUNTY RECORDERS OFFICE, CLARK COUNTY, NEVADA, LYING WITHIN SECTIONS 26 AND 35, TOWNSHIP 20 SOUTH, RANGE 59 EAST, CITY OF LAS VEGAS, CLARK COUNTY, NEVADA.

**BASIS OF BEARING**

NORTH 89° 54' 38" EAST BEING THE SOUTH LINE OF THE SOUTHEAST QUARTER OF SECTION 35, T 20 S, R 59 E, M.D.M. AS SHOWN BY THE AMENDED MAP IN FILE 93, PAGE 95 OF SURVEYS, IN THE CLARK COUNTY RECORDERS OFFICE.

**BENCHMARK**

NOT BRASS REFERENCE CAP, 50.00 FEET NORTH OF STATION 787+19.42 OF CHARLESTON BLVD. (No. 0LV09-34SSE6).  
3209.81 FEET (NAVD 1988 DATUM)  
3207.61 FEET (SUMMERLIN DATUM)

**WATER CONSTRUCTION NOTES**

- ① FIRE HYDRANT ASSEMBLY PER UDACS PLATE 7 (INCLUDES TEE AND GATE VALVE).
- ② INSTALL 6" CAP & 2" BLOW OFF ASSEMBLY PER UDACS PLATE 4.
- ③ 8" x 8" x 8" TEE PER UDACS PLATE 5
- ④ 8" GATE VALVE
- ⑤ 8" x 6" REDUCER
- ⑥ 8" 45° BEND PER UDACS PLATE 5
- ⑦ 8" - 22-1/2° BEND PER UDACS PLATE 5
- ⑧ 8" - 11-1/4° BEND PER UDACS PLATE 5
- ⑨ 1" WATER SERVICE WITH 3/4" METER PER UDACS PLATE No. 1B.
- ⑩ IRRIGATION AND POWER CONDUIT, 2-4" & 1-6" SCH. 40 PVC CONDUIT
- ⑪ 1" WATER SERVICE WITH 1" METER AND RPPA PER UDACS PLATES 1D & 11A.
- ⑫ 1" WATER SERVICE WITH 1" METER PER UDACS PLATE 1D.

**CONSTRUCTION NOTES**

- ① INSTALL 2-12" D3 STREET NAME SIGNS AND 1-36" R1-1 STOP SIGN.
- ② INSTALL 2-9" D3 STREET NAME SIGNS AND 1-30" R1-1 STOP SIGN.

**BACKWATER VALVES (BWV)**

THE FOLLOWING LOTS REQUIRE SEWER BACKWATER VALVES.  
LOTS : 7-9, 11-13, 16-18, 21, 22, 35-39, 41, 42, 44-49, 52-56, 60-63, 71, 79, 81, 82, 84-88, 103-105, 116, AND 117.

**SEWER CONNECTION NOTE:**

ONE OR MORE SEGMENTS OF THE DOWNSTREAM SEWER SYSTEM THAT WILL SERVE THIS PROJECT HAS NOT BEEN COMPLETED AND/OR ACCEPTED FOR MAINTENANCE BY THE CITY OF LAS VEGAS. ANY WORK DONE ON THIS PROJECT PRIOR TO THE COMPLETION AND/OR ACCEPTANCE OF THE DOWNSTREAM SEWER SYSTEM(S) SHALL BE DONE AT THE DEVELOPER'S OWN RISK. THE CITY OF LAS VEGAS RESERVES THE RIGHT TO PREVENT THE PHYSICAL CONNECTION OF THIS PROJECT INTO THE DOWNSTREAM SEWER SYSTEM UNTIL ALL SEGMENTS HAVE BEEN COMPLETED AND ACCEPTED FOR MAINTENANCE, OR UNTIL SUCH TIME AS THEY ARE DEEMED AVAILABLE FOR SERVICE.

**REDUCED PRESSURE PRINCIPLE ASSEMBLY (1) 1**

APPROVED REDUCED PRESSURE PRINCIPLE ASSEMBLY(S) SHALL BE INSTALLED PER THE UDACS PLATE NO. 11A. NO WATER SHALL BE TAKEN FROM A SERVICE REQUIRING BACKFLOW PREVENTION UNTIL THE REDUCED PRESSURE PRINCIPLE ASSEMBLY HAS BEEN SUCCESSFULLY TESTED BY THE LVVWD.

ANY BLOCK WALL OR OTHER FENCE MATERIAL SHALL BE DESIGNED AND CONSTRUCTED AROUND THE OUTSIDE OF THE EASEMENT(S) TO ALLOW THE DISTRICT DIRECT ACCESS FROM THE ADJACENT RIGHT-OF-WAY. EASEMENTS SHALL BE CLEARLY MARKED OR STAKED PRIOR TO THE START OF CONSTRUCTION.

**PRV NOTE:**

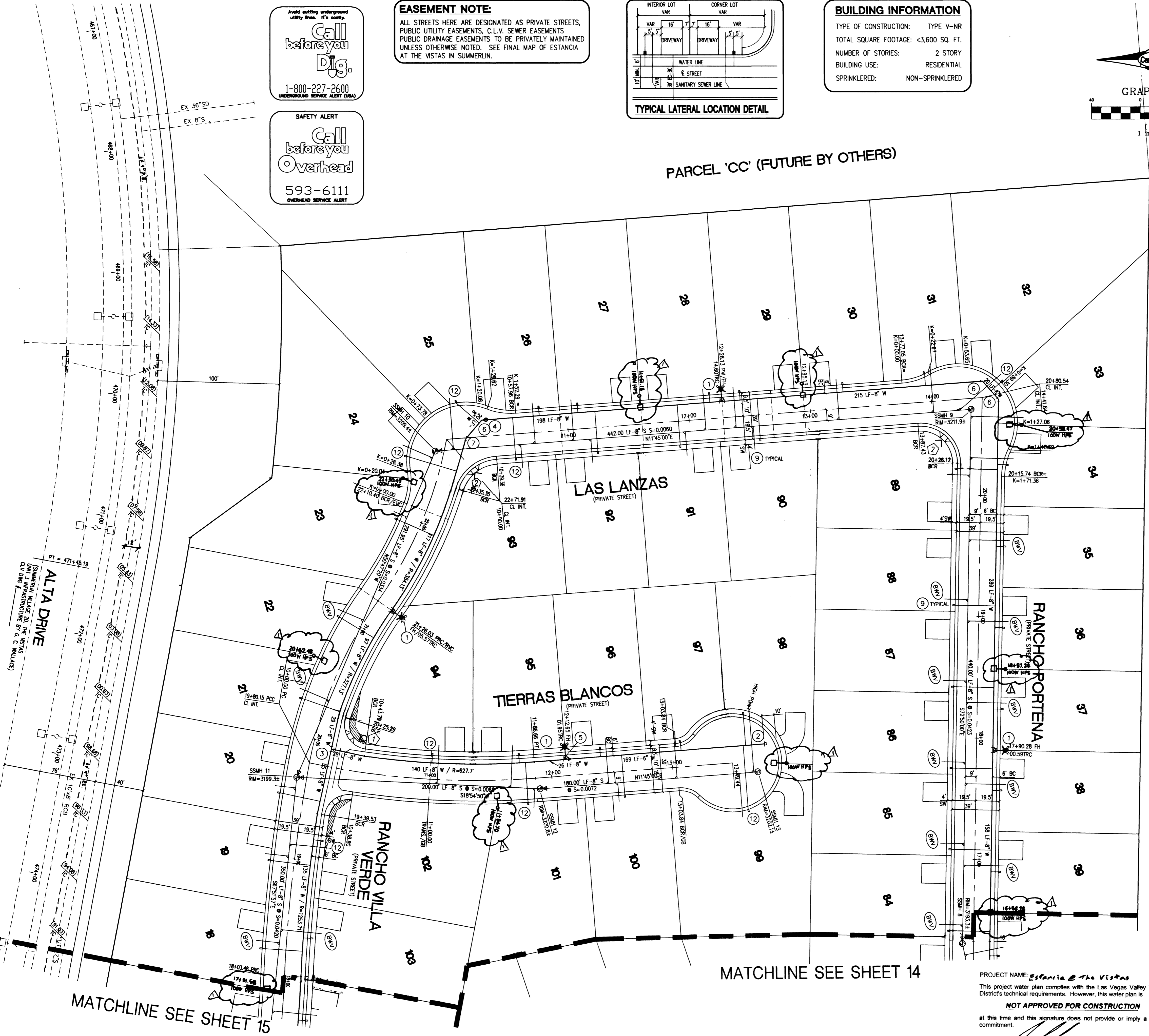
THIS PROPERTY MAY HAVE STATIC WATER PRESSURE IN EXCESS OF 80 PSI. THE UNIFORM PLUMBING CODE REQUIRES THAT INDIVIDUAL, ON-SITE (PRIVATE), PRESSURE REDUCING VALVES BE INSTALLED WHENEVER THE PRESSURE EXCEEDS 80 PSI. PRV'S ARE THE DEVELOPER'S RESPONSIBILITY AND WILL NOT BE INSPECTED OR INCLUDED IN THE ACCEPTANCE OF LVVWD FACILITIES.

**APPROVALS**

APPROVAL OF THESE PLANS SHALL NOT BE CONSTRUED TO BE A PERMIT FOR OR AN APPROVAL OF ANY VIOLATION OF ANY OF THE PROVISIONS OF THE STATE OR COUNTY LAWS. *6/18/01* G.P.M.

*[Signature]* 6/18/01  
CLV FIRE DEPARTMENT DATE  
*[Signature]* 6/18/01  
LAS VEGAS VALLEY WATER DISTRICT DATE

PARCEL 'AA' (BY OTHERS)



MATCHLINE SEE SHEET 15

MATCHLINE SEE SHEET 14

PROJECT NAME: *Estancia @ The Vistas*  
This project water plan complies with the Las Vegas Valley Water District's technical requirements. However, this water plan is **NOT APPROVED FOR CONSTRUCTION** at this time and this signature does not provide or imply a water commitment.  
LVVWD #52 *6-15-01* DATE

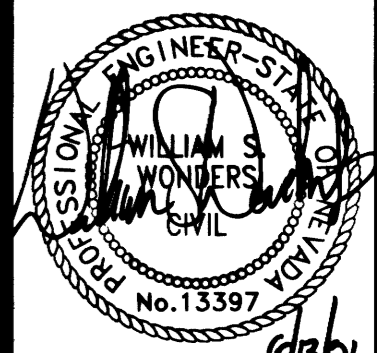
WOODSIDE HOMES

UTILITY, STREETLIGHT AND SIGNAGE PLAN / 1 OF 3

**Carter Burgess**  
Consultants in Planning, Engineering, Construction Management, and Related Services  
6655 Bermuda Road  
Las Vegas, NV 89119  
(702) 838-5400 Fax (702) 838-5464

ESTANCIA @ THE VISTAS  
PARCEL BB @ SUMMERLIN V-20

DRAWN BY: *[Signature]*  
DESIGNED BY: *[Signature]*  
CHECKED BY: *[Signature]*  
PROJECT NO: 240190  
SCALE: 1"=40'  
HORIZ. VERT.



SHEET 13  
13 OF 17 SHEETS  
CLV DRAWING NO. 3074-4673

33335 38955

L:\240190\Design\190-13U.dwg