

SIGHT VISIBILITY RESTRICTION EASEMENT
 SIGHT VISIBILITY RESTRICTION EASEMENT ~ NO OBSTRUCTION TO BE OVER 30" IN HEIGHT IN HATCHED AREA

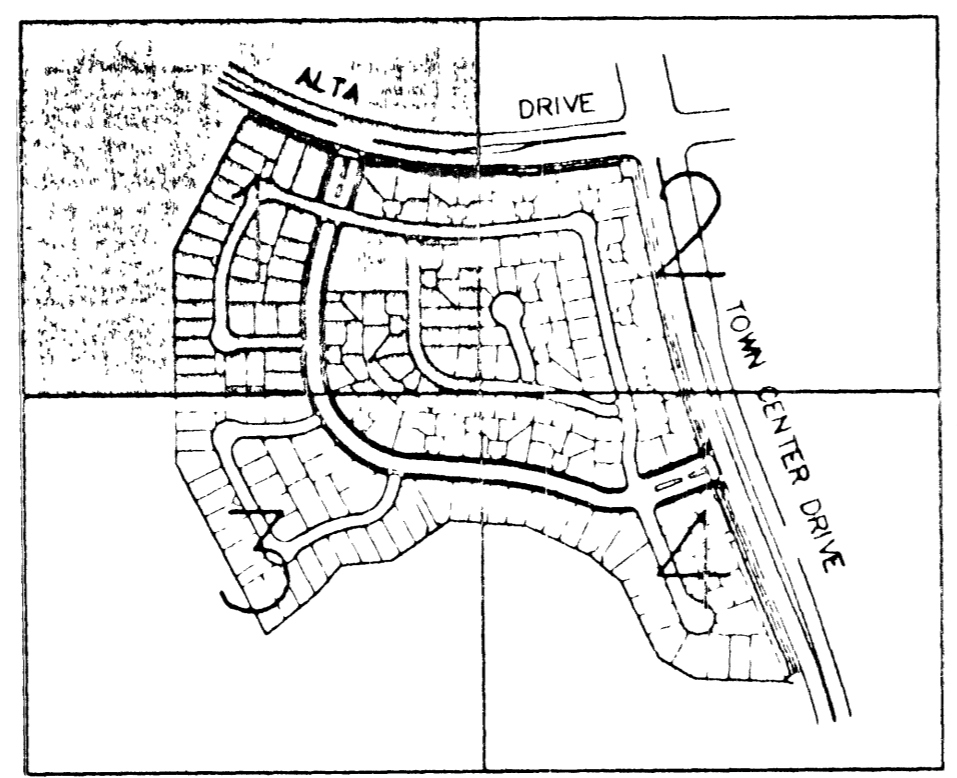
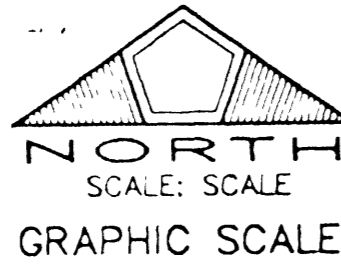
Avoid cutting underground utility lines. It's costly.
Call before you Dig.
 1-800-227-2600
 UNDERGROUND SERVICE ALERT (USA)

AS BUILT PLAN PREPARED BY
PENTACORE
 FROM INFORMATION PROVIDED BY:
 CONTRACTOR **TERRA CONSTRUCTION**
 DATE 5/30/01

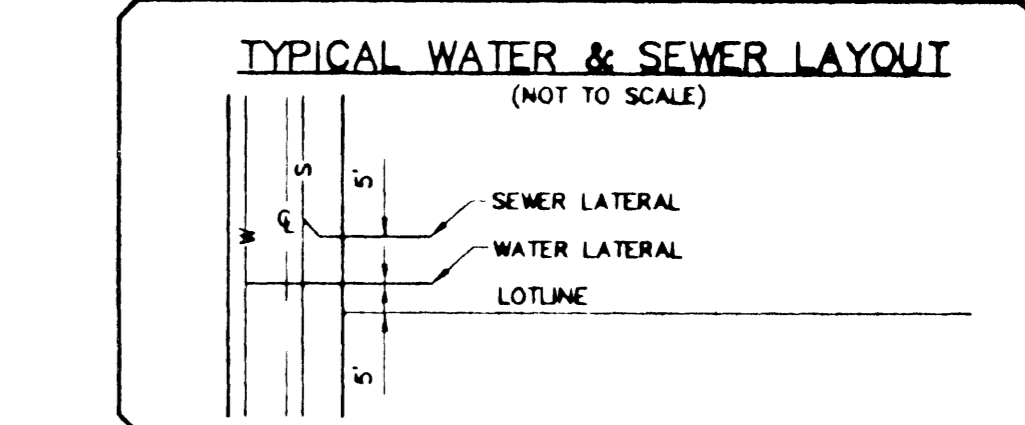
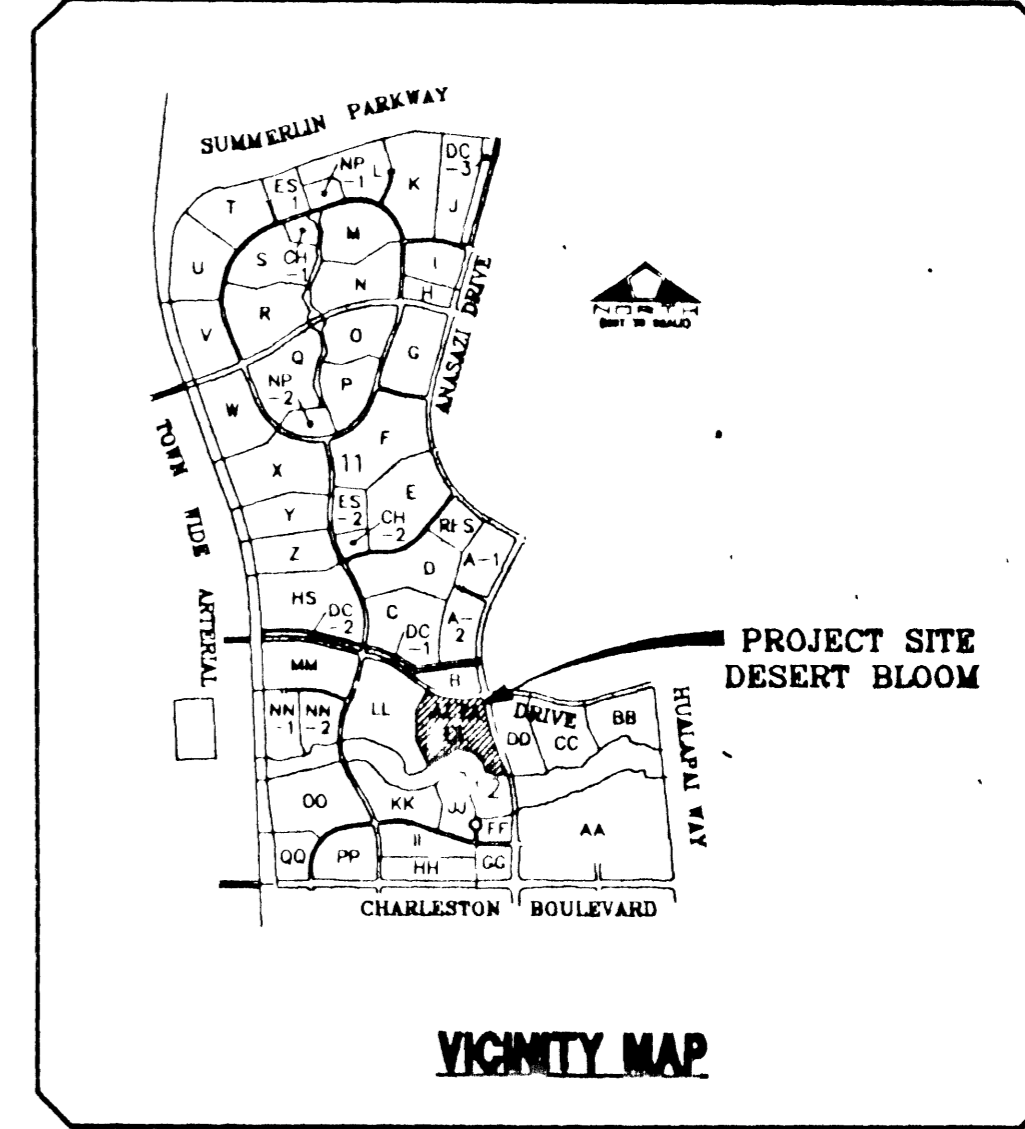
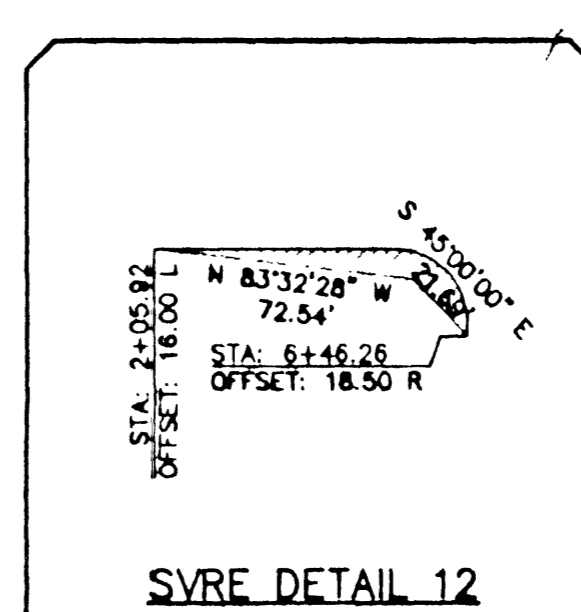
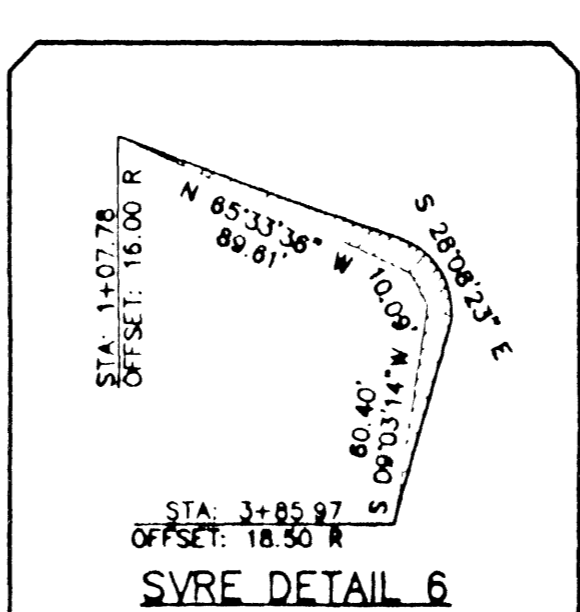
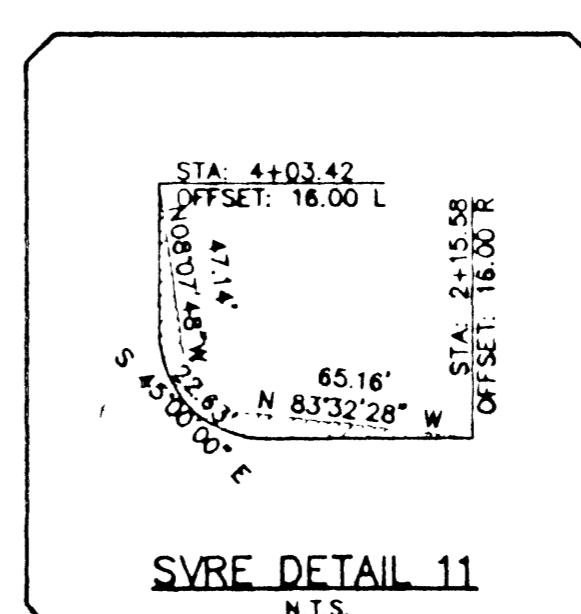
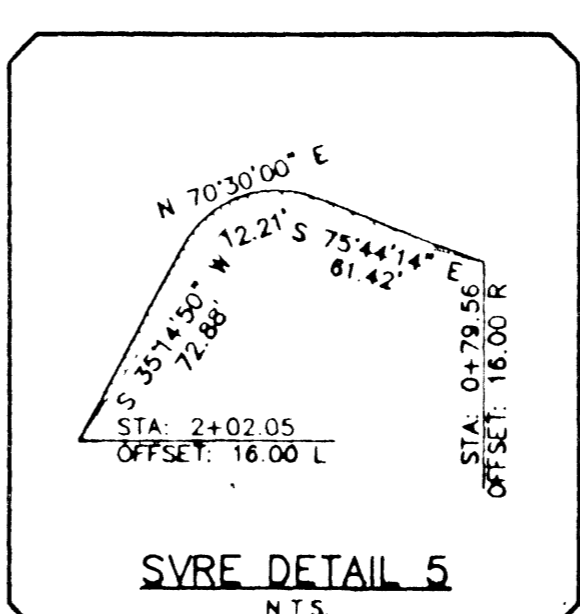
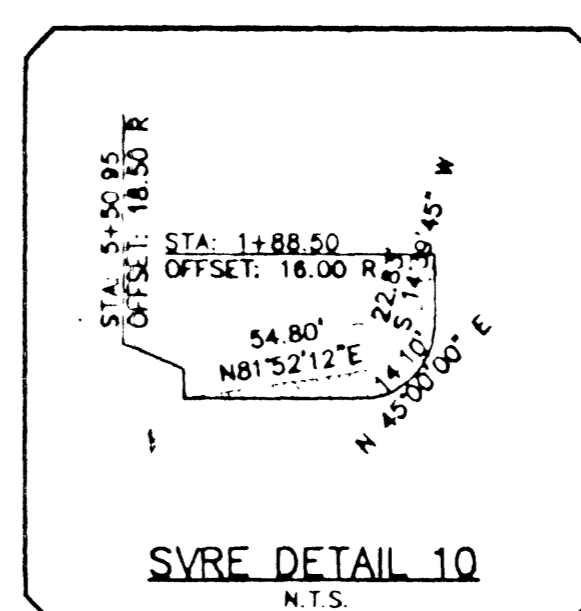
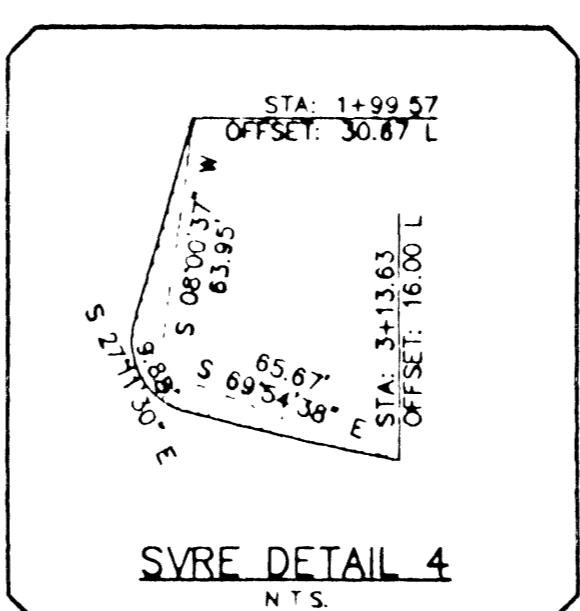
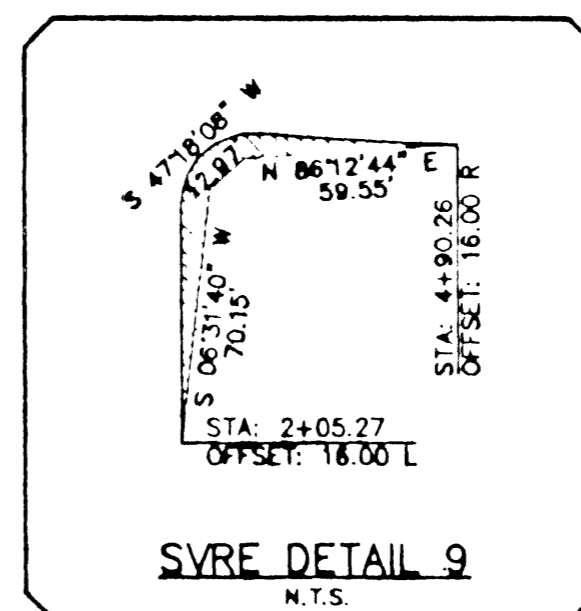
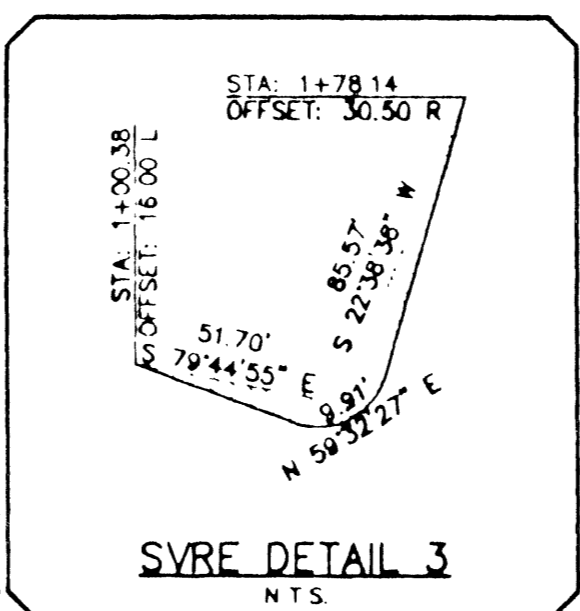
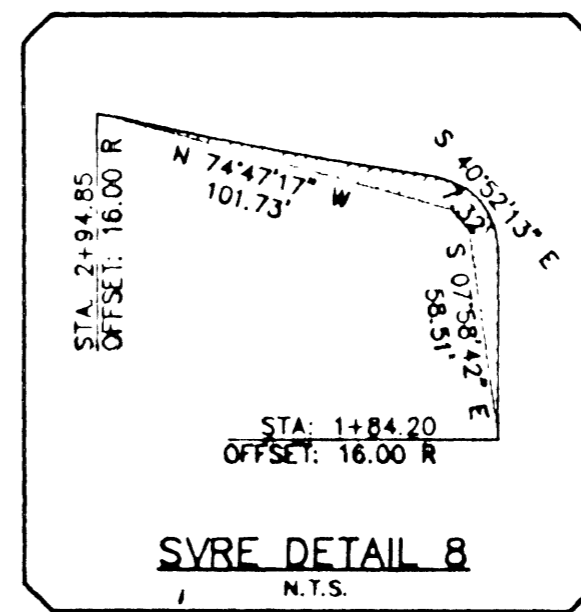
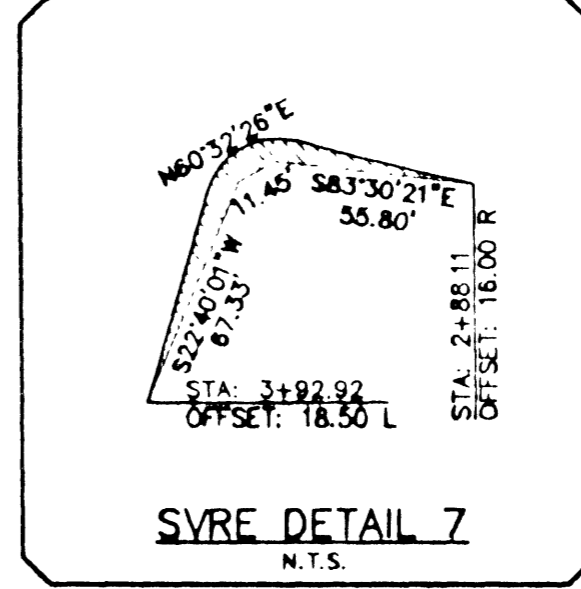
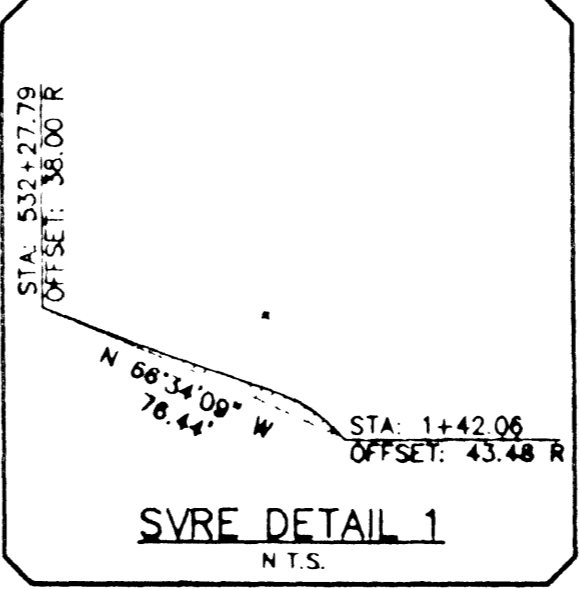
AS-BUILT SEWER PLAN
 Dimension ties given here have been provided by the contractor. Pentacore Engineering assumes no responsibility for their accuracy or completeness.

Dated: 5/30/01

Dimensions not available for all lots



- FITTINGS LEGEND**
- 1 8" TEE
 - 2 8"x6" TEE
 - 3 6" GATE VALVE
 - 4 8" GATE VALVE
 - 5 12" GATE VALVE
 - 6 12"x8" REDUCER
 - 7 2" BLOW-OFF ASSEMBLY W/CAP
 - 8 FIRE HYDRANT ASSY. (UDS PLATE NO. 7)
 - 9 8" CROSS
 - 10 8" 45° BEND
 - 11 8" 22 1/2° BEND
 - 12 8" 90° BEND
 - 13 8" 11 1/4° BEND
 - 14 (1) - 6" & (1) - 3" IRRIGATION SLEEVES



REDUCED PRESSURE PRINCIPLE ASSEMBLY (3) 1 1/2"
 APPROVED REDUCED PRESSURE PRINCIPLE ASSEMBLY(S) SHALL BE INSTALLED PER THE UOACS PLATE NO. 11A. NO WATER SHALL BE TAKEN FROM A SERVICE REQUIRING BACKFLOW PREVENTION UNTIL THE REDUCED PRESSURE PRINCIPLE ASSEMBLY HAS BEEN SUCCESSFULLY TESTED BY THE LVWD.
 ANY BLOCK WALL OR OTHER FENCE MATERIAL SHALL BE DESIGNED AND CONSTRUCTED AROUND THE OUTSIDE OF THE EASEMENT(S) TO ALLOW THE DISTRICT DIRECT ACCESS FROM THE ADJACENT RIGHT-OF-WAY.

STATIC WATER PRESSURE IN EXCESS OF 80 PSI
 THIS PROPERTY MAY HAVE STATIC WATER PRESSURE IN EXCESS OF 80 PSI. THE UNIFORM PLUMBING CODE REQUIRES THAT INDIVIDUAL, ON-SITE (PRIVATE) PRESSURE REDUCING VALVE BE INSTALLED WHENEVER THE PRESSURE EXCEEDS 80 PSI. PRV'S ARE THE DEVELOPER'S RESPONSIBILITY AND WILL NOT BE INSPECTED OR INCLUDED IN THE ACCEPTANCE OF LVWD FACILITIES.

ABANDONED VALVE CUT AND CAP
 ALL VALVES TO BE ABANDONED IN THE CLOSED POSITION, UNLESS SHOWN OTHERWISE, BY REMOVING A MINIMUM OF THE TOP 12 INCHES OF THE VALVE BOX AND THEN FILLING THE REMAINING PORTION OF THE VALVE BOX WITH CONCRETE HAVING A COMPRESSIVE STRENGTH OF AT LEAST 2,000 PSI.
 THE CONTRACTOR SHALL CUT THE EXISTING PIPE 3' BEYOND THE ABANDONED VALVE AND INSTALL A CAP WHERE A JOINT OR COUPLING IN THE EXISTING PIPE IS UNCOVERED AT THE CUT AND CAP LOCATION. THE INSTALLATION OF A PLUG MAY BE PERMITTED WITH DISTRICT APPROVAL. THE CONTRACTOR SHALL INSTALL A CONCRETE THRUST BLOCK IN ACCORDANCE WITH THE PROVISIONS OF THE UOACS PLATE NO. 5 AT ALL CAP OR PLUG LOCATIONS.

BENCHMARK
 RIVET & PLATE IN TC, NORTH CURB LINE ON CHARLESTON BLVD. APPROX. 1,300' EAST OF HUALAPAI WAY.
 OLV00-3155W8 = 2867.851 (NAVD 88)
 SUMMERLIN (-2.18') = 2865.471
 (ALL ELEVATIONS SHOWN ARE BASED ON SUMMERLIN DATUM)

BASIS OF BEARINGS
 NORTH 89°41'55" EAST BEING THE SOUTHERLY LINE OF THE SOUTHEAST QUARTER (SE 1/4) OF SECTION 08, TOWNSHIP 20 SOUTH, RANGE 58 EAST, AS SHOWN IN FILE 85, PAGE 17 OF RECORD OF SURVEY MAPS IN THE CLARK COUNTY RECORDER'S OFFICE, CLARK COUNTY, NEVADA.

APPROVED FOR CONSTRUCTION
 LAS VEGAS VALLEY WATER DISTRICT
 DATE 11/27/99

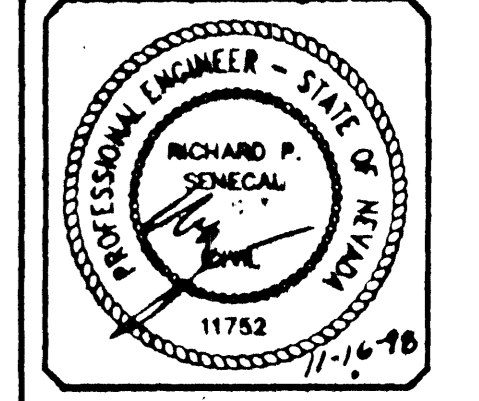
DATE	DESCRIPTION
11/11/99	RELOCATE PRV'S & SERVICE LAYERS
11/11/99	DATE

NCRO ASSOCIATES
 4545 SPRING MOUNTAIN ROAD, SUITE 105
 LAS VEGAS, NEVADA 89102
 (702) 247-1920

PENTACORE
 4545 SPRING MOUNTAIN ROAD, SUITE 105
 LAS VEGAS, NEVADA 89102
 (702) 247-1920

UTILITY PLAN 1
 DESERT BLOOM
 AS-BUILT SEWER PLAN

DATE	8/13/98
DRAWN BY	
CHECKED BY	
ADJ. CHECKED	
JOB NO.	0312.0010
SCALE	1"=40'



SHEET **3** OF 21
 CLV.DWG#
 307Y-4599

UTILITY PLAN

11487 () 13419 ()

Ray Madell
 CITY OF LAS VEGAS - FIRE MARSHAL
 DATE 11-20-98

As-Built