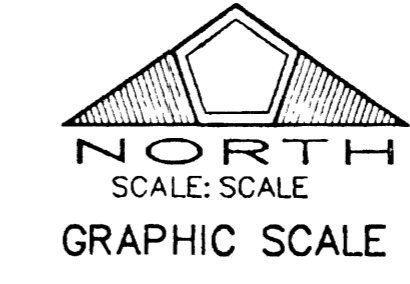


MATCH LINE - SEE SHEET 4

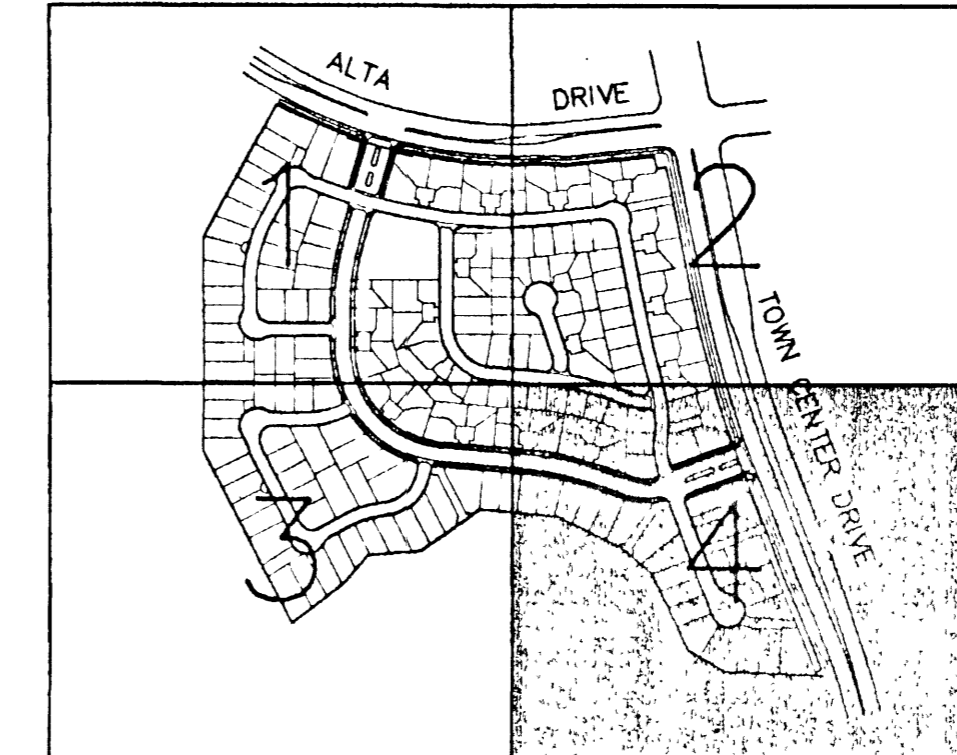
MATCH LINE - SEE SHEET 5



**ESTIMATE OF WATER QUANTITIES**

6" PVC WATER MAIN	445 L.F.
8" PVC WATER MAIN	5261 L.F.
1" COPPER WATER SERVICE	204 EA.
5/8" WATER METER (FROM LVVMD)	204 EA.
1 1/2" WATER METER W/ 1 1/2" RPPA	3 EA.
METER BOX (UDACS PLATE 1B)	204 EA.
ARMORCAST, INC. W/ H-20 LOAD RATING	204 EA.
METER BOX (UDACS PLATE 1D)	3 EA.
ARMORCAST, INC. W/ H-20 LOAD RATING	3 EA.
2" BLOW-OFF ASSEMBLY W/CAP	3 EA.
8" TEE	7 EA.
12" x 8" REDUCER	1 EA.
STD. FIRE HYDRANT ASSEMBLY W/ 6" LATERAL & 6" GATE VALVE	11 EA.
8" GATE VALVE	12 EA.
8" 45° BEND	12 EA.
8" 60° BEND	1 EA.
8" 90° BEND	2 EA.
8" CROSS	1 EA.
8" x 6" TEE	1 EA.
6" GATE VALVE	1 EA.
8" x 6" REDUCER	1 EA.
6" 45° BEND	5 EA.
PRV	204 EA.

NOTE: QUANTITIES ARE APPROXIMATE ONLY - CONTRACTOR TO VERIFY.



**FITTINGS LEGEND**

- 1 8" TEE
- 2 8"x6" TEE
- 3 6" GATE VALVE
- 4 8" GATE VALVE
- 5 12" GATE VALVE
- 6 12"x8" REDUCER
- 7 2" BLOW-OFF ASSEMBLY W/CAP
- 8 FIRE HYDRANT ASSY. (UDS PLATE NO. 7)
- 9 8" CROSS
- 10 8" 45° BEND
- 11 8" 22 1/2° BEND
- 12 8" 90° BEND
- 13 8" 11 1/4° BEND
- 14 (1) - 6" & (1) - 3" IRRIGATION SLEEVES

**STREET LIGHT LEGEND**

- \* NEW STREETLIGHT PAD MOUNT SERVICE POINT
- 100W STREET LIGHT W/TYPE 3 CONCRETE POLE
- EXISTING STREET LIGHT
- PROPOSED NO. 3-1/2 CONCRETE PULL BOX W/ METAL COVER
- 1 1/4" ST. LT. CONDUIT
- PE PHOTO EYE

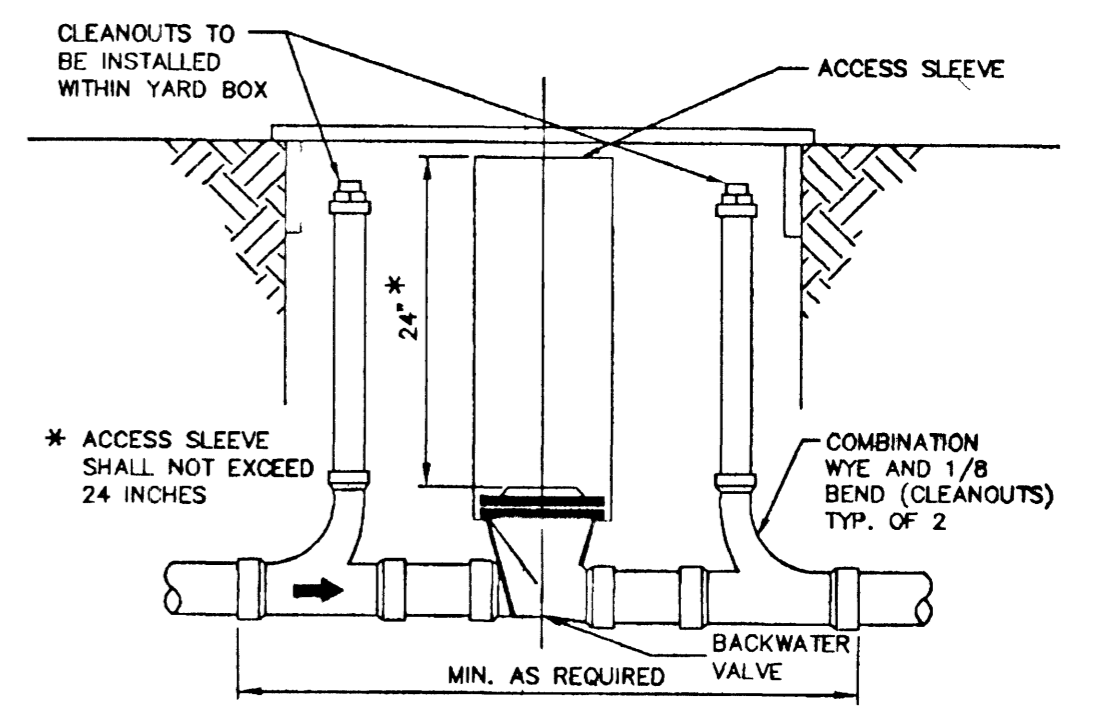
**TRAFFIC LEGEND & QUANTITIES**

- 9" D-3 STREET NAME SIGN
- 6" D-3 STREET NAME SIGN
- 36" STOP SIGN (R1-1)
- 25 MPH SIGN (R2-1)

**RESIDENTIAL SEWER BACKWATER VALVE**

TO SATISFY THE INTENT OF THE 1994 UNIFORM PLUMBING CODE, SUBSECTIONS 710.1 AND 710.6 FOR RESIDENTIAL BACKWATER VALVES, LOCAL BUILDING DEPARTMENTS INDICATE IN AN OCT. 24, 1996 JOINT LETTER OF AGREEMENT:

"DRAINAGE PIPING SERVING FIXTURES WHICH HAVE FLOOD LEVEL RIMS LOCATED BELOW THE ELEVATION OF THE NEXT UPSTREAM MANHOLE COVER OF THE PUBLIC OR PRIVATE SEWER SERVING SUCH DRAINAGE PIPING SHALL BE PROTECTED FROM BACKFLOW OF SEWAGE BY INSTALLING AN APPROVED TYPE BACKWATER VALVE. ALL FIXTURES LOCATED WITHIN THE DWELLING UNIT MAY DISCHARGE THROUGH A SINGLE BACKWATER VALVE, PROVIDED THAT APPROVED TYPE CLEANOUTS ARE LOCATED IMMEDIATELY UPSTREAM AND DOWNSTREAM OF THE BACKWATER VALVE. BACKWATER VALVES SHALL BE LOCATED WHERE THEY WILL BE ACCESSIBLE FOR INSPECTION AND REPAIR AT ALL TIMES. THE ACCESS SLEEVE SHALL NOT EXTEND MORE THAN 24" FROM THE TOP OF THE VALVE COVER TO THE TOP OF THE SLEEVE CAP. ALL BACKWATER VALVES LOCATED 24" OR LESS WILL NOT REQUIRE AN ACCESS BOX. THE BACKWATER VALVE MAY BE INSTALLED A MAXIMUM OF 36" BELOW GRADE PROVIDED AN ACCESS BOX WITH MINIMUM DIMENSIONS OF 14" IN WIDTH BY 23" IN LENGTH MEASURED FROM INSIDE EDGE TO INSIDE EDGE IS USED AND THE MINIMUM DEPTH OF THE BOX IS 12". ALL BACKWATER VALVES LOCATED DEEPER THAN 36" SHALL BE MADE ACCESSIBLE BY USE OF A YARD BOX OR VAULT SIZED LARGE ENOUGH TO PERMIT A PERSON TO ENTER THE BOX FOR THE PURPOSE OF ACCESSING THE BACKWATER VALVE."



- NOTES:
- 36" MAX. DEPTH WITH BOX - MIN. DIMENSION 14"x23"x12" IN DEPTH.
  - VALVE LOCATED DEEPER THAN 36" SHALL BE SIZED TO PERMIT PERSON TO ENTER BOX.
  - REMOVE VALVE ASSEMBLY TO CLEAN OUT BEHIND CLAPPER.

Avoid cutting underground utility lines. It's costly.

**Call before you Dig.**

1-800-227-2600  
UNDERGROUND SERVICE ALERT (USA)

**APPROVED FOR CONSTRUCTION**

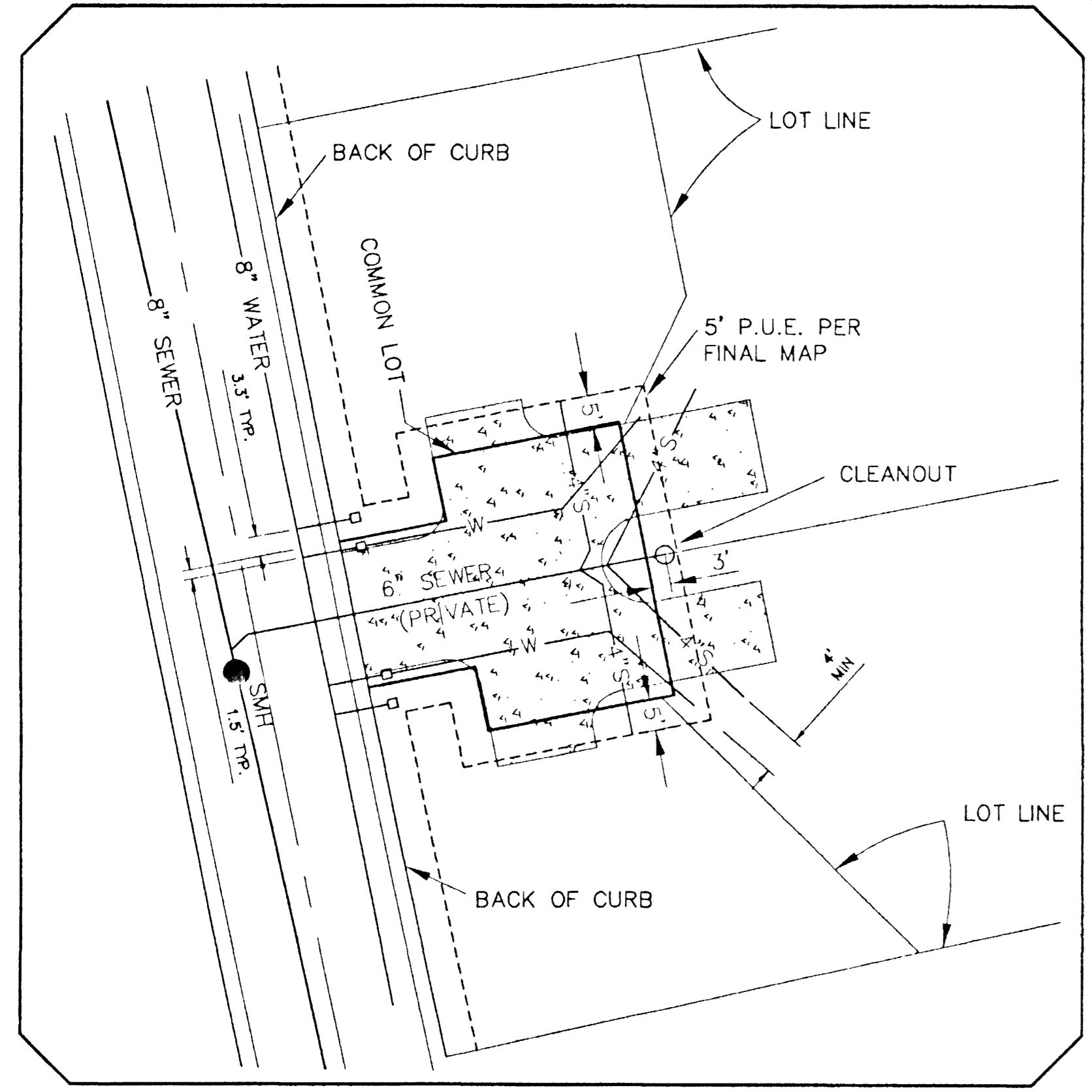
*[Signature]* 1/27/98  
LAS VEGAS VALLEY WATER DISTRICT DATE

*[Signature]* 11-20-98  
FIRE MARSHAL - CITY OF LAS VEGAS DATE

**AS-BUILT SEWER PLAN**

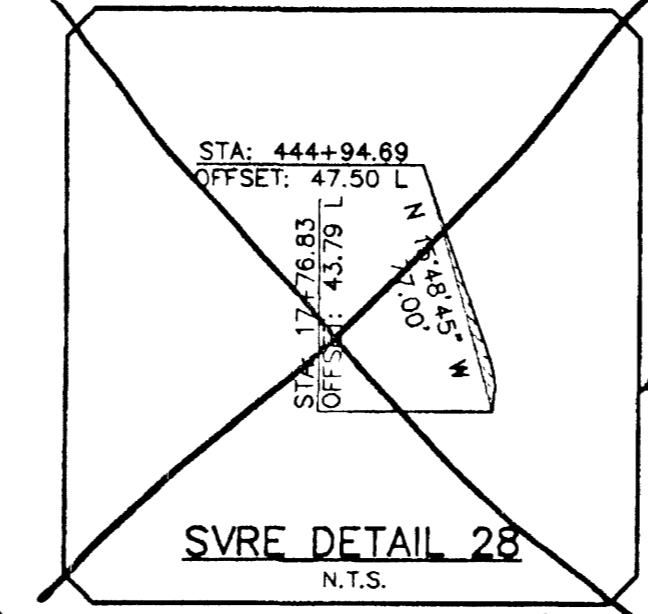
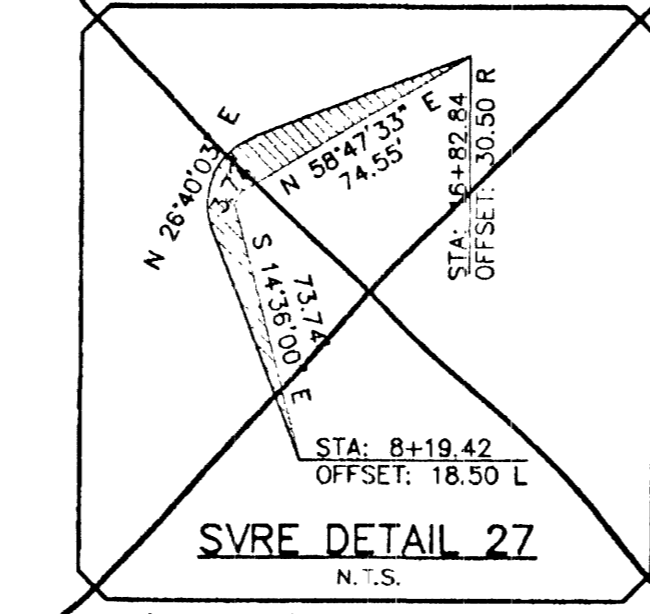
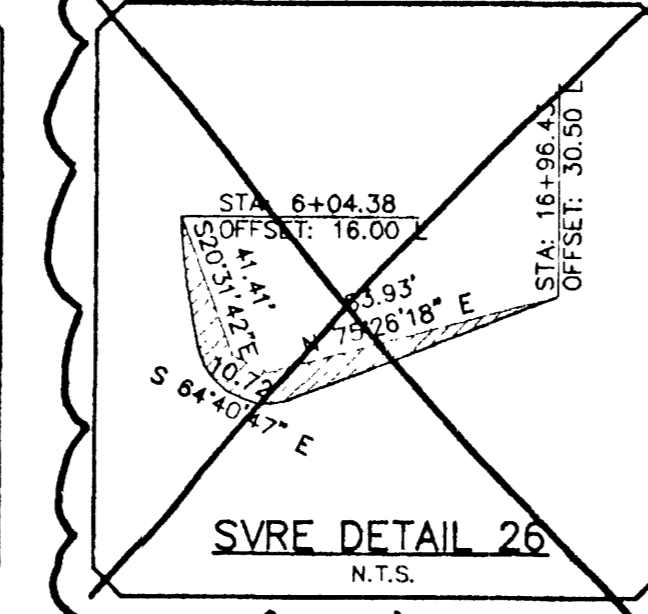
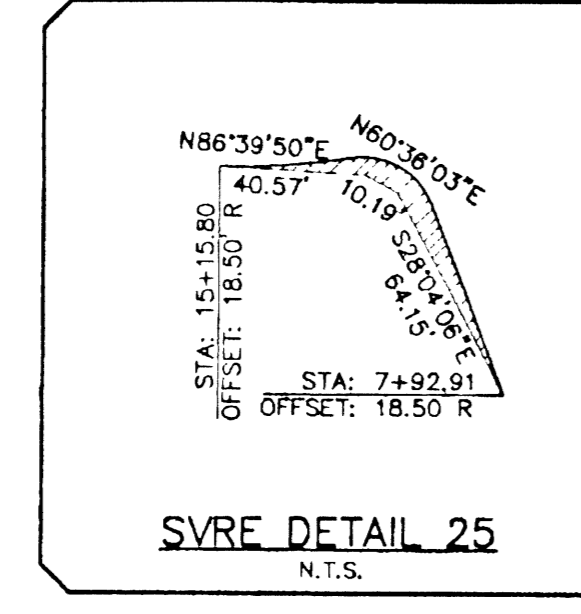
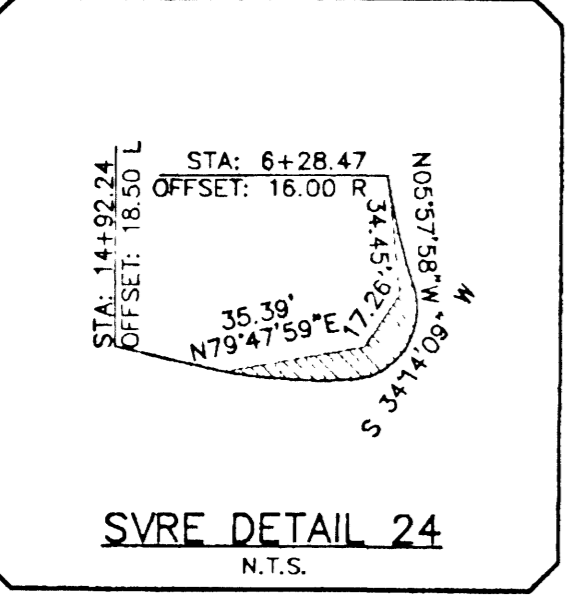
Dimension ties given here have been provided by the contractor. Pentacore Engineering assumes no responsibility for their accuracy or completeness.

Dated: 5/30/01



TYPICAL WATER AND SEWER LATERAL - CLUSTER HOMES  
SCALE: 1"=20'

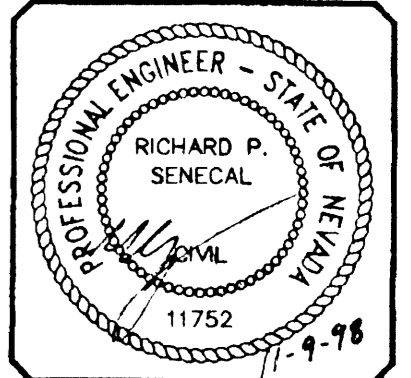
AS BUILT PLAN PREPARED BY **PENTACORE**  
FROM INFORMATION PROVIDED BY: CONTRACTOR **TERRA CONSTRUCTION**  
DATE 5/30/01



**NIGRO ASSOCIATES**  
4545 SPRING MOUNTAIN ROAD, SUITE 105  
LAS VEGAS, NV 89102  
(702) 247-1920

**PENTACORE**  
CIVIL ENGINEERING, LAND SURVEYING & PLANNING  
CORP. 8753 WEST CHARLESTON BOULEVARD  
LAS VEGAS, NEVADA 89102 (702) 258-0115

DATE: 8/17/98  
DRAWN BY:  
DESIGNED BY:  
CHECKED BY:  
JOB NO.: 00120010  
SCALE: 1"=40'



SHEET **6** OF 21  
C.L.V. DWG. # 3074-4588

MAY 30 2001