

KEY MAP

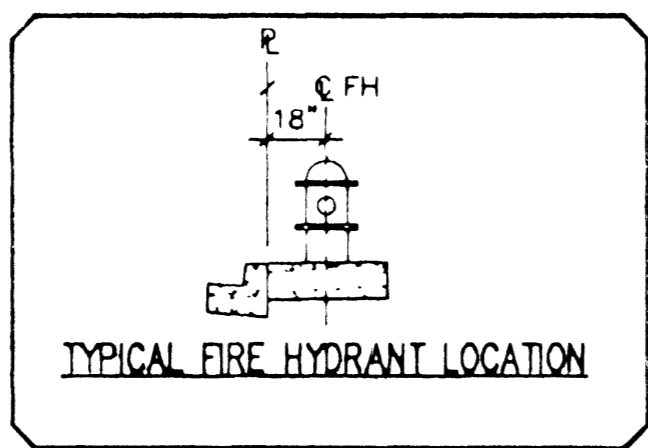


MATCH LINE - SEE SHEET 6

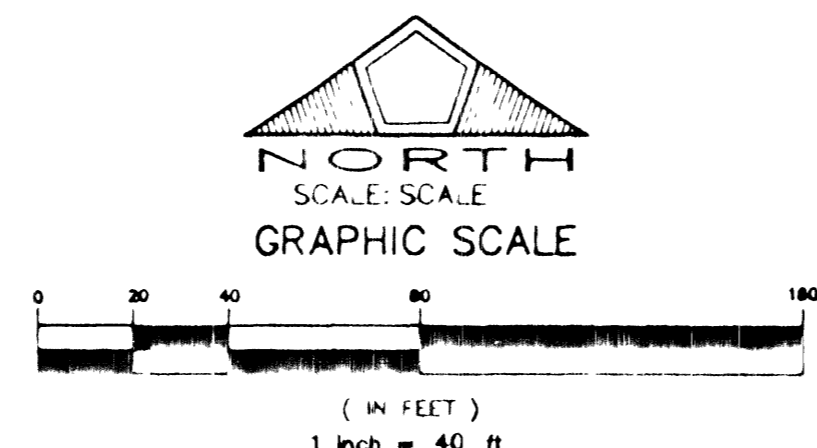
11683 35527

AS BUILT PLAN
PREPARED BY
PENTACORE
FROM INFORMATION PROVIDED BY:
CONTRACTOR **TERRA CONSTRUCTION**
DATE **5/30/01**

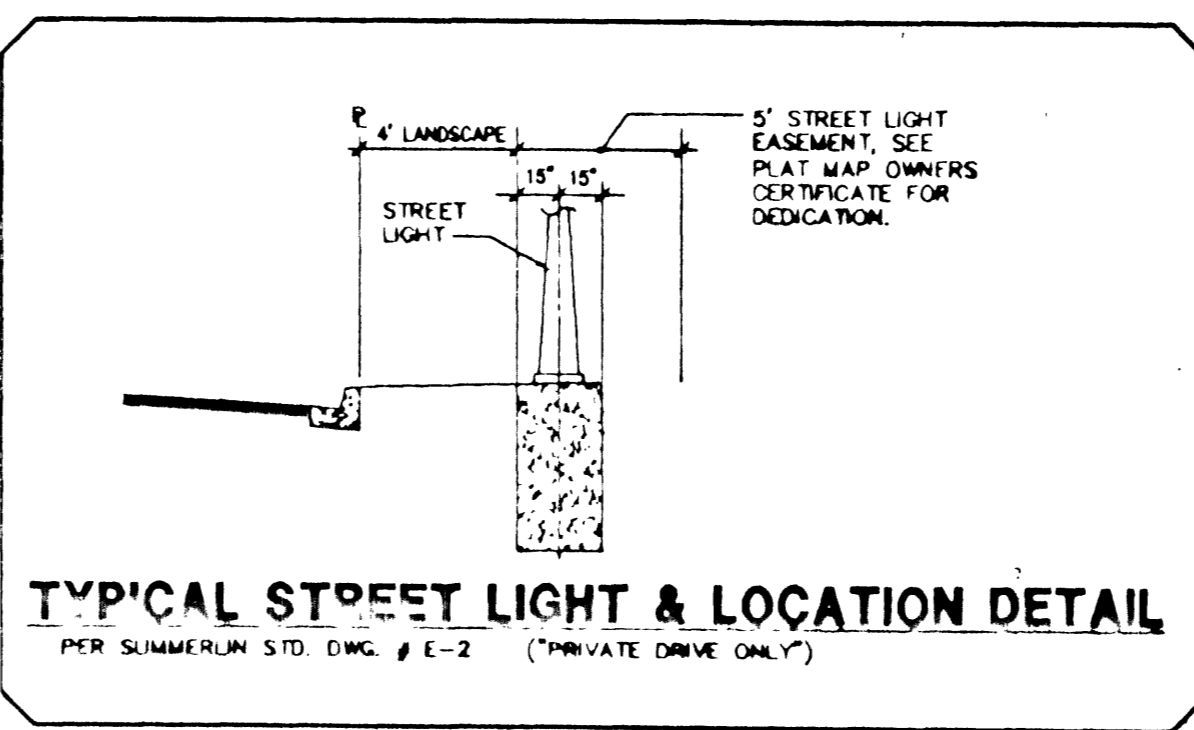
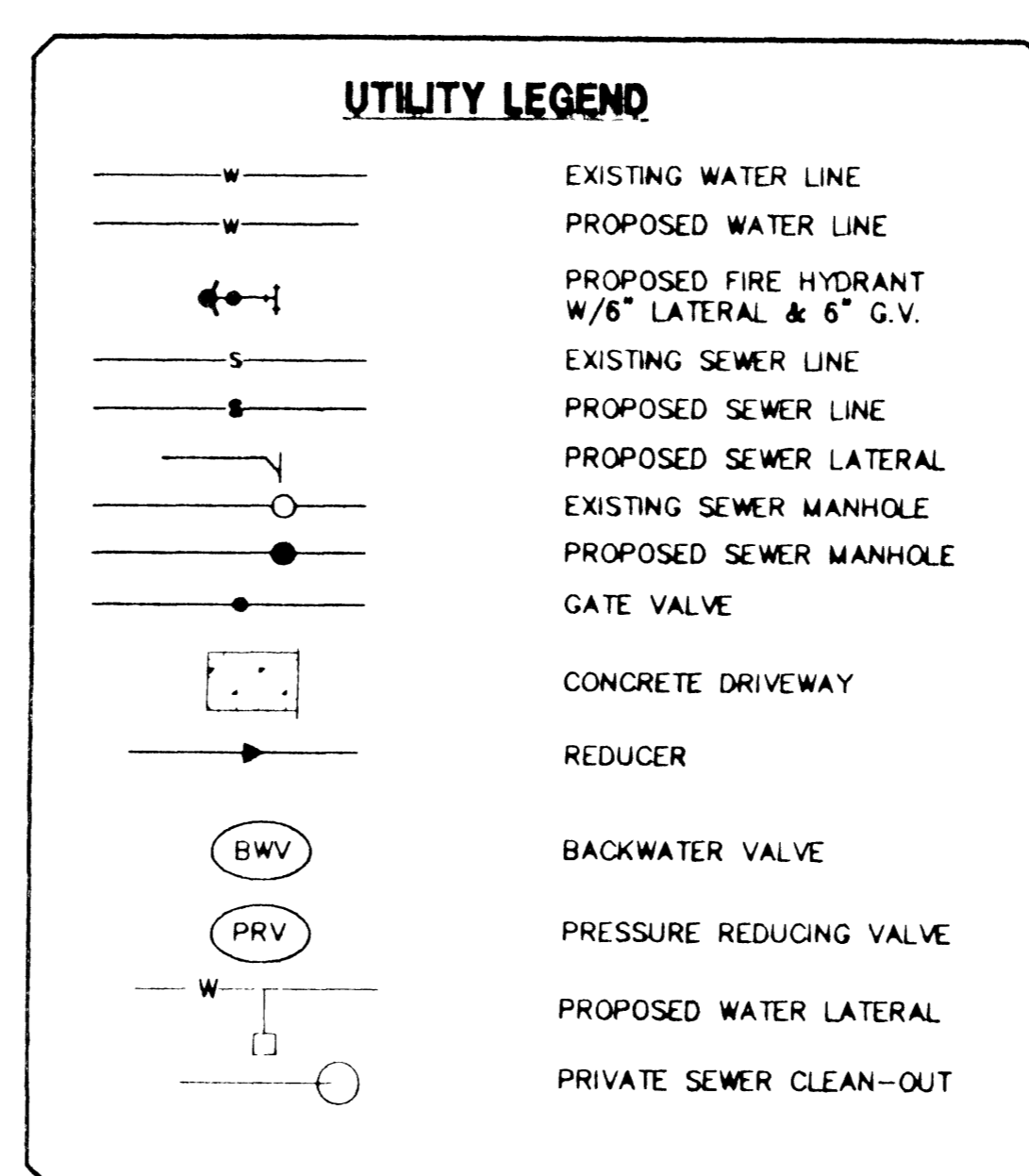
AS-BUILT SEWER PLAN
Dimension ties given here have been
provided by the contractor. Pentacore
Engineering assumes no responsibility
for their accuracy or completeness.
Dated: **5/30/01**



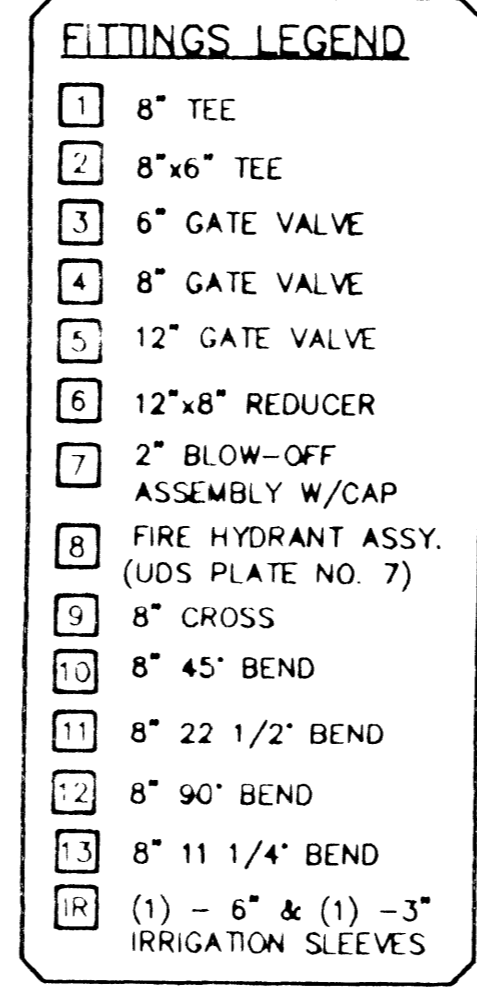
TYPICAL FIRE HYDRANT LOCATION



(IN FEET)
1 inch = 40 ft.



TYPICAL STREET LIGHT & LOCATION DETAIL
PER SUMNER LUM. STD. DWG. # E-2 (*PRIVATE DRIVE ONLY)



Avoid cutting underground utility lines. It's costly.

Call before you Dig.

1-800-227-2600
UNDERGROUND SERVICE ALERT (USA)

APPROVED FOR CONSTRUCTION

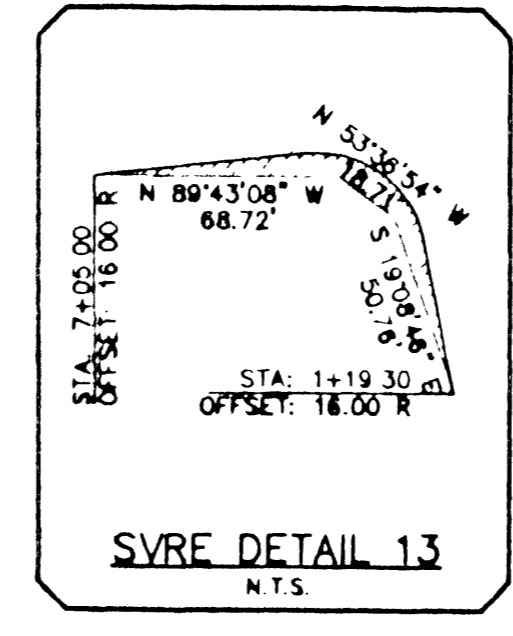
[Signature] 1/27/01
LAS VEGAS VALLEY WATER DISTRICT DATE

LVVWD WATER NOTES

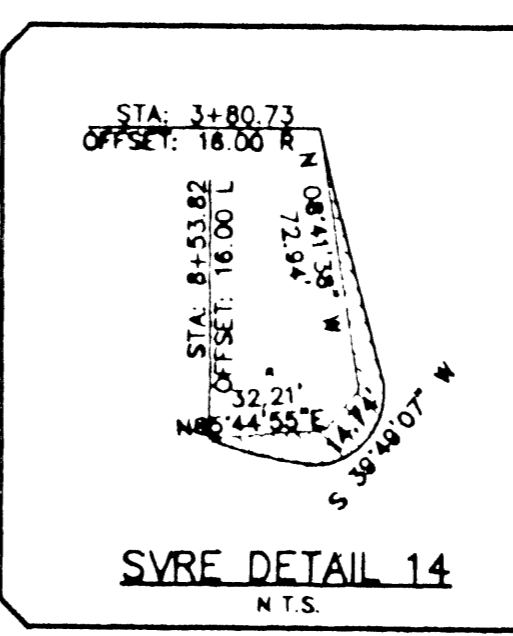
- NO WORK SHALL BEGIN UNTIL THE WATER PLANS HAVE BEEN RELEASED FOR CONSTRUCTION BY THE LVVWD. FOLLOWING WATER PLAN APPROVAL, FORTY-EIGHT (48) HOUR NOTICE SHALL BE GIVEN TO THE LVVWD COMMUNICATION SUPPORT CENTER (258-7171) PRIOR TO THE START OF CONSTRUCTION. NOTICE MUST BE GIVEN BY 2:00 P.M. THE BUSINESS DAY PRIOR TO A LVVWD INSPECTION.
- ALL WORK SHALL CONFORM TO LVVWD STANDARD PLATES, DRAWING, AND SPECIFICATIONS AND THE UNIFORM DESIGN AND CONSTRUCTION STANDARDS FOR WATER DISTRIBUTION SYSTEMS (SDACS), LATEST EDITION.
- ALL WORK, EXCEPT AS MODIFIED BY THESE PLANS OR BY NOTE 2, SHALL BE DONE IN ACCORDANCE WITH THE MOST CURRENT DRAFT OR EDITION OF THE UNIFORM STANDARD SPECIFICATIONS FOR PUBLIC WORKS CONSTRUCTION OFF-SITE IMPROVEMENTS, CLARK COUNTY AREA.
- A SINGLE PIPE MATERIAL SHALL BE USED THROUGHOUT THE PROJECT, UNLESS OTHERWISE APPROVED BY THE LVVWD.
- ALL SERVICE LATERALS TWO INCHES (2") IN DIAMETER AND SMALLER SHALL BE COPPER TUBING WITH LVVWD APPROVED SERVICE SADDLES.
- ALL WATER METER BOXES SHALL BE LOCATED OUTSIDE OF DRIVEWAY AREAS.
- ALL VALVES SHALL BE LOCATED OUTSIDE OF DRIVEWAYS, GUTTERS, CURBS AND VALLEY GUTTERS.
- THE FOLLOWING REQUIREMENTS MUST BE MET IN THE EVENT A WATER LINE AND A SANITARY SEWER OR STORM SEWER LINE CROSS:
 - A. POTABLE WATER SUPPLY QUALITY MATERIAL
 - B. ENCASEMENT, WITH FOUR INCH (4") CONCRETE (MINIMUM)
 - C. SLEEVING WITH POTABLE WATER SUPPLY QUALITY PIPE.
- EACH PROVISION MUST EXTEND ALONG THE SANITARY OR STORM SEWER, ON EITHER SIDE OF THE WATER MAIN. A MINIMUM TEN FOOT (10') DISTANCE PERPENDICULAR TO THE EXTERIOR OF MAIN.
- WARNING TAPE SHALL BE REQUIRED OVER ALL MAINS, ALL SIX INCH (6") DIAMETER AND LARGER SERVICE LATERALS, AND ANY SERVICE LATERAL NOT INSTALLED PERPENDICULAR TO THE MAIN IN ACCORDANCE WITH STANDARD PLATE NO. 27.
- ALL WATER FACILITIES SHALL BE FILLED, DISINFECTED, PRESSURE TESTED, FLUSHED, FILLED AND AN ACCEPTABLE WATER SAMPLE OBTAINED PRIOR TO CONNECTION TO THE LVVWD'S DISTRIBUTION SYSTEM.
- THE CONTRACTOR MUST OBTAIN ALL METERS TWO INCHES (2") AND SMALLER FROM LVVWD CENTRAL STORES. TELEPHONE 258-3152 FORTY-EIGHT (48) HOURS PRIOR TO PICK-UP.
- CONSTRUCTION MAY INTERRUPT SERVICE, WITH LVVWD APPROVAL AND PROPER NOTIFICATION, BETWEEN THE HOURS OF 10:00 P.M. AND 6:00 A.M. SUNDAY THROUGH THURSDAY. CIRCUMSTANCES THAT MAY REQUIRE TEMPORARY SERVICE FEED MUST HAVE PRIOR LVVWD APPROVAL.
- ALL WATER FACILITY CONSTRUCTION MATERIALS USED MUST BE AS LISTED ON THE LVVWD'S PRE-APPROVED MATERIALS AND MANUFACTURERS LISTING FOR NEW FACILITIES, LATEST REVISION OR SPECIFICALLY APPROVED ON THESE PLANS.

CITY OF LAS VEGAS STREETLIGHT NOTES

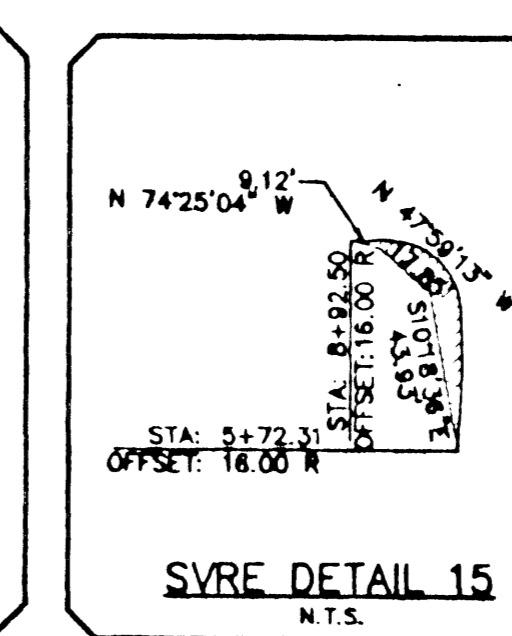
- ALL STREET LIGHTING INSTALLATIONS SHALL BE IN ACCORDANCE WITH THE STREET LIGHTING PLANS, THE "UNIFORM STANDARD SPECIFICATIONS FOR PUBLIC WORKS CONSTRUCTION OFF-SITE IMPROVEMENTS, CLARK COUNTY AREA, NEVADA", LATEST REVISION, AND THE "UNIFORM STANDARD DRAWINGS FOR PUBLIC WORKS CONSTRUCTION OFF-SITE IMPROVEMENTS, CLARK COUNTY AREA, NEVADA", LATEST REVISION.
- NO DEVIATION OF STREET LIGHT, PULL BOX, CONDUITS, (ETC.) LOCATIONS SHALL BE PERMITTED WITHOUT WRITTEN APPROVAL OF THE TRAFFIC/ELECTRICAL FIELD OPERATIONS DIVISION AND THE CITY ENGINEER. ANY DEVIATION FROM THE PLAN LOCATION WILL REQUIRE COMPLIANCE WITH SECTION 623.10.03 (E) OF THE SPECIFICATIONS.
- ALL EXISTING STREET LIGHTING SHALL REMAIN OPERATIONAL DURING CONSTRUCTION.
- ALL EMPTY CONDUIT SHALL HAVE PULL STRINGS INSTALLED PRIOR TO FINAL INSPECTION.
- ANY STRUCTURE SUCH AS BLOCK WALLS, CHAIN LINK FENCES, RETAINING WALLS, ETC. SHALL LEAVE A MINIMUM CLEARANCE OF EIGHTEEN INCHES (18") TO THE FACE OF STREET LIGHTING POLE ON ALL SIDES WHEN STREETLIGHT IS INSTALLED BEHIND SIDEWALK, AND SHALL AT NO TIME COMPLETELY ENCLOSE THE STREET LIGHTING POLE.
- AS-BUILT DRAWINGS SHALL BE SUPPLIED TO THE ELECTRICAL SERVICES SECTION PRIOR TO ANY PREFINAL INSPECTION. THE AS-BUILT DRAWING NEEDS TO BE STAMPED AS-BUILT AND SIGNED BY THE PREPARER.
- SERVICE POINT SHALL BE COORDINATED WITH NEVADA POWER COMPANY, AND WHEREVER POSSIBLE, BE LOCATED NEAR THE CENTER OF THE CIRCUIT. THIS SHALL BE THE CONTRACTOR'S RESPONSIBILITY.
- IT SHALL BE ASSUMED THAT IN THE ABSENCE OF AN EXISTING, WORKABLE CIRCUIT TO ATTACH TO, ALL INSTALLATIONS SHALL REQUIRE A NEW SERVICE FOR OPERATION OF THE CIRCUIT.
- WHEREVER THERE IS AN OVERHEAD UTILITY THAT MAY CONFLICT WITH THE INSTALLATION OF STREET LIGHTING CIRCUITS AND/OR POLES, THESE CONFLICTS MUST BE RESOLVED BETWEEN THE DEVELOPER AND THE UTILITIES INVOLVED BEFORE STREETLIGHT BASES ARE INSTALLED AT NO EXPENSE TO THE CITY OF LAS VEGAS.
- THE CONTRACTOR SHALL FURNISH COMPLETE SERVICE TO TRANSFORMERS AND CONTROL SYSTEMS IF REQUIRED ON PLANS.



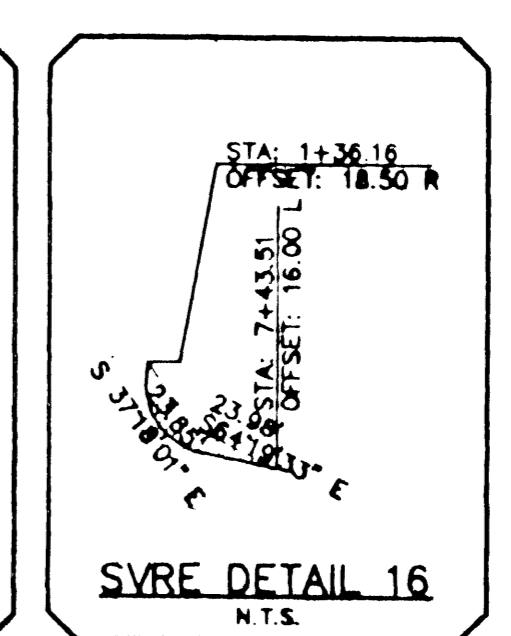
SVRE DETAIL 13
N.T.S.



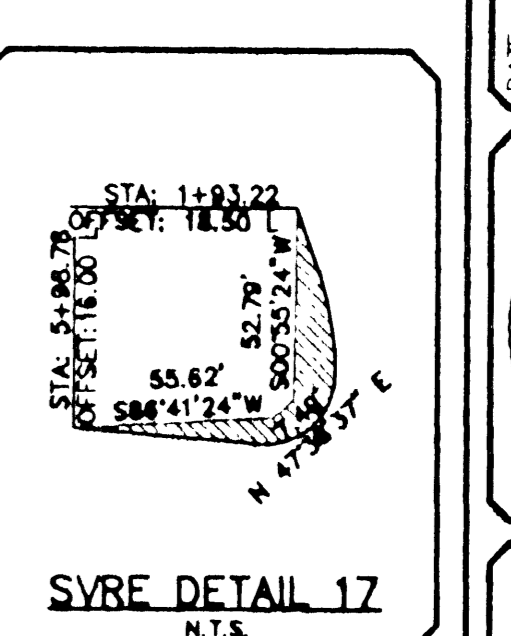
SVRE DETAIL 14
N.T.S.



SVRE DETAIL 15
N.T.S.



SVRE DETAIL 16
N.T.S.



SVRE DETAIL 17
N.T.S.

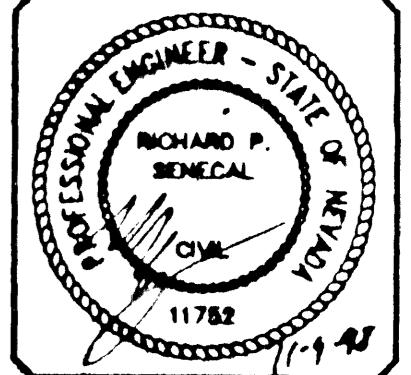
DATE	7/3/98
DESIGNED BY	DR
CHECKED BY	DA
DATE	11/27/01
SCALE	1"=40'

NGRO ASSOCIATES
4545 SPRING MOUNTAIN ROAD, SUITE 105
LAS VEGAS, NEVADA 89102
(702) 247-1920

PENTACORE
O.R. FOSTER, P.E. (N.E. 10000) (702) 251-1111
D.A. FOSTER, P.E. (N.E. 10000) (702) 251-1111
LAS VEGAS, NEVADA 89102 (702) 251-1111

UTILITY PLAN 2
DESERT BLOOM
AS-BUILT SEWER PLAN

DATE	7/3/98
DESIGNED BY	DR
CHECKED BY	DA
DATE	11/27/01
SCALE	1"=40'



SHEET **4** OF 21
C.L.V. DWG.#

AS-BUILT