

PROJECT NAME: DIXON ESTATES  
 This project water plan complies with the Las Vegas Valley Water District's technical requirements. However, this water plan is NOT APPROVED FOR CONSTRUCTION at this time and this signature does not provide or imply a water commitment.

*James P. Bunker*  
 LVWD DATE

### FIRE DEPARTMENT NOTES

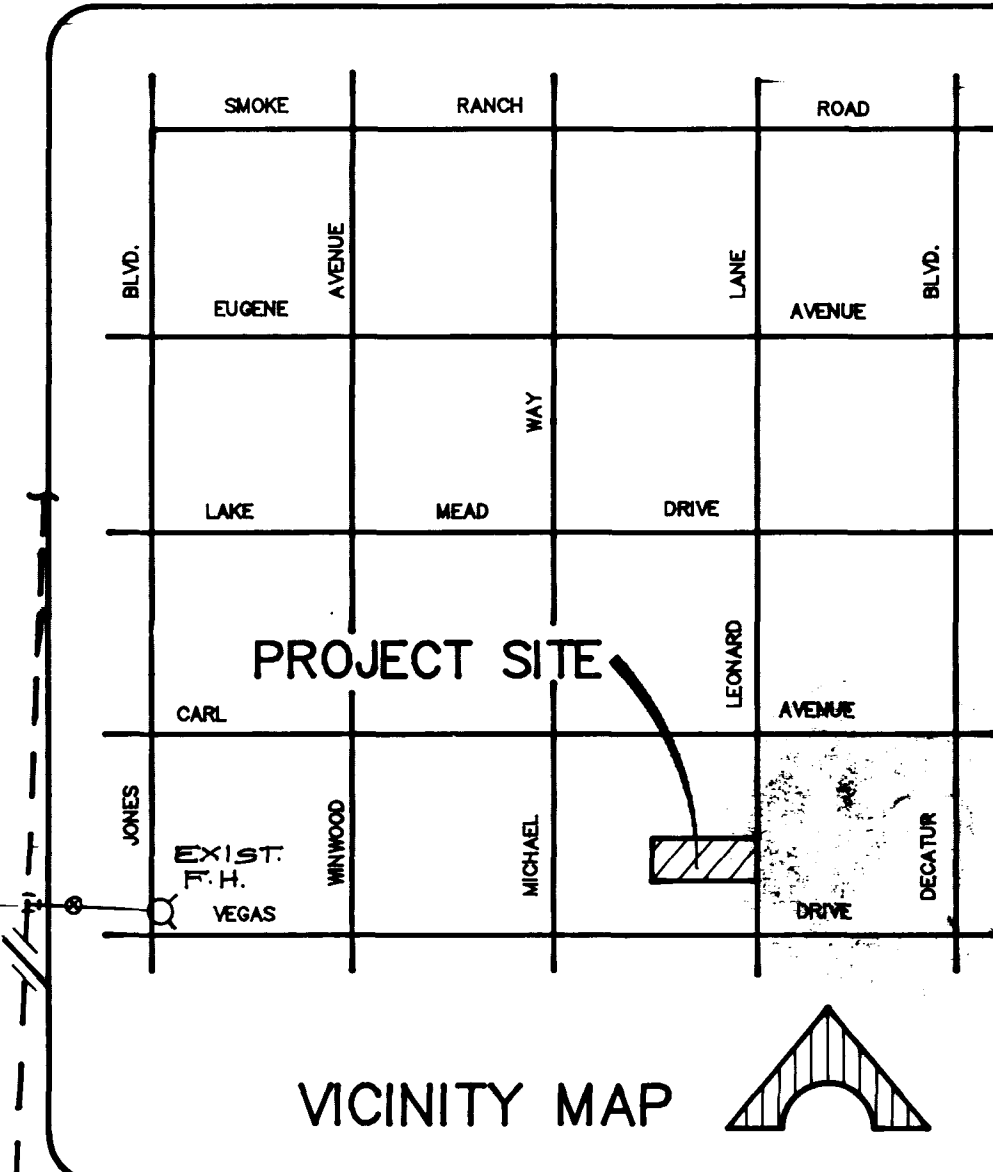
- ALL WORK SHALL BE DONE IN STRICT ACCORDANCE WITH THE CITY OF LAS VEGAS FIRE DEPARTMENT "HYDRANT SPECIFICATIONS", "HYDRANT INSTALLATION SPECIFICATIONS" AND ORDINANCE #36777.
- AUTHORIZED HYDRANTS FOR THIS PROJECT ARE:  
 A. KENNEDY GUARDIAN  
 B. MUELLER A-423 CENTURIAN  
 C. CLOW MODEL 2546 MEDALLION
- ON ANY NEW HOME OR BUILDING INSTALLATION, ACCESSIBLE FIRE HYDRANTS SHALL BE INSTALLED BEFORE COMBUSTIBLE CONSTRUCTION COMMENCES AND SAID FIRE HYDRANTS SHALL BE IN GOOD WORKING ORDER WITH AN ADEQUATE WATER SUPPLY.
- CONTRACTOR SHALL PLACE A BLUE REFLECTIVE MARKER AT CENTERLINE OF STREET ADJACENT TO FIRE HYDRANT AS REQUIRED IN ORDINANCE #36777 TO IDENTIFY FIRE HYDRANT LOCATIONS.
- CALL THE LAS VEGAS BUILDING DEPARTMENT AT 228-2071 FOR UNDERGROUND INSPECTION, PRESSURE AND FLUSH VERIFICATION OF ALL FIRE HYDRANTS AND FIRE LINES BEFORE COVERING.
- PAINTING OF THE CURBS AND HYDRANT AND ANY WORK NECESSARY FOR PROTECTION OF HYDRANTS FROM PHYSICAL DAMAGE PER ORDINANCE #36777 SHALL BE COMPLETED BEFORE APPROVAL BY THE CITY OF LAS VEGAS FIRE DEPARTMENT.
- A PERMIT IS REQUIRED FROM THE FIRE DEPARTMENT FOR ON-SITE WATER LINE AND FIRE HYDRANT. THE PERMIT AND CONTRACTORS MATERIAL AND TEST CERTIFICATE FOR UNDERGROUND PIPING FORM SHALL BE OBTAINED FROM THE FIRE PROTECTION ENGINEER PRIOR TO ANY WORK BEGINNING.
- A FLOW TEST MUST BE WITNESSED BY THE FIRE DEPARTMENT PRIOR TO OCCUPANCY FOR VERIFICATION OF REQUIRED ON-SITE WATER SUPPLY.
- ALL ON-SITE FIRE MAIN MATERIALS MUST BE U.L. LISTED AND A.W.W.A. APPROVED.
- FIRE HYDRANT SPACING:  
 RESIDENTIAL - 500 FEET UNSPRINKLERED, 600 FEET SPRINKLERED.  
 COMMERCIAL, INCLUDING MULTI-FAMILY - 300 FEET UNSPRINKLERED, 400 FEET SPRINKLERED.
- NO FIRE HYDRANT SHALL BE LOCATED WITHIN THE REQUIRED RADIUS OF A CUL-DE-SAC OR WITHIN 20 FEET OF THE PERIMETER OF THE RADIUS OF THE CUL-DE-SAC.
- NO FIRE HYDRANT SHALL BE LOCATED WITHIN 6 FEET OF ANY CURB RETURN, DRIVEWAY, POWER POLE, STREET LIGHT OR ANY OTHER OBSTRUCTION.
- NOT MORE THAN 2 HYDRANTS CAN BE OUT OF SERVICE DUE TO A SINGLE MAIN BREAK.
- THE TURNING RADIUS FOR ANY FIRE APPARATUS ACCESS ROAD AND/OR FIRE LANE, PUBLIC OR PRIVATE SHALL BE NOT LESS THAN 45 FEET OUTSIDE RADIUS AND 22 FEET INSIDE RADIUS.
- A FIRE APPARATUS ROAD SHALL BE REQUIRED WHEN ANY PORTION OF AN EXTERIOR WALL OF THE FIRST STORY IS LOCATED MORE THAN 150 FEET FROM A FIRE DEPARTMENT VEHICLE ACCESS. (SEE EXCEPTIONS IN UFG 91, SECTION 10.203).
- ALL DEAD END FIRE APPARATUS ACCESS ROADS AND/OR FIRE LINES PUBLIC OR PRIVATE IN EXCESS OF 150 FEET IN LENGTH SHALL BE PROVIDED WITH AN APPROVED TURNAROUND AREA. SEE ORDINANCE #36777.
- ELECTRICALLY CONTROLLED ACCESS GATES SHALL BE PROVIDED WITH AN APPROVED EMERGENCY VEHICLE DETECTOR/RECEIVER SYSTEM. SAID SYSTEM SHALL BE INSTALLED IN ACCORDANCE WITH THE CITY OF LAS VEGAS GUIDELINES FOR AUTOMATIC EMERGENCY VEHICLE ACCESS GATES.

### SEWER CONTRIBUTION

CONTRIBUTION/DAY = 4500 GPD  
 PEAK FLOW/DAY = 15300 GPD  
 SEWER CONTRIBUTION PER DAY BY THIS DEVELOPMENT = 15300 GPD

### C L V SEWER NOTES

- ALL CONSTRUCTION AND MATERIALS SHALL BE IN ACCORDANCE WITH THE LATEST EDITION OF THE DESIGN & CONSTRUCTION STANDARDS FOR WASTEWATER COLLECTION SYSTEMS AND THE UNIFORM STANDARD SPECIFICATIONS FOR PUBLIC WORKS CONSTRUCTION OFF-SITE IMPROVEMENTS, CLARK COUNTY AREA, NEVADA, AS AMENDED. IN ALL CASES, THESE STANDARDS SHALL SUPERSEDE THE UNIFORM STANDARD SPECIFICATIONS. IT WILL BE THE RESPONSIBILITY OF THE CONTRACTOR TO BE AWARE OF THE CONTENTS OF THE ABOVE SPECIFICATION BOOKS.
- IT SHALL BE THE CONTRACTOR'S RESPONSIBILITY TO PERFORM CONSTRUCTION AS PER PLANS. ANY ADDITIONS, DELETIONS, OR CHANGES SHALL FIRST MEET WITH THE APPROVAL OF THE CONTROLLING AGENCY.
- CHISEL "S" OR "G" IN CURBS WHERE SEWER OR GAS LATERALS PASS UNDER THE CURB.
- POLYVINYL (PVC) SEWER PIPE SHALL MEET ASTM D-3034 SDR 35 SPECIFICATIONS, INSTALLED WITH SAND BEDDING AND BACKFILL OF TYPE II GRAVEL.
- ALL MANHOLES IN PAVED STREETS 80' R/W AND LARGER, SHALL HAVE CONCRETE COLLARS.
- TEE SADDLES SHALL BE USED TO CONNECT SEWER LATERALS TO EXISTING MAIN LINES UP TO 12" DIAMETER IN SIZE. CONNECTIONS TO 15" OR LARGER MAINS SHALL REQUIRE SPECIAL PROCEDURES.
- A SEWER MAIN CROSSING OVER A WATER MAIN OR LESS THAN 18" UNDER A WATER MAIN, MUST BE REINFORCED CONCRETE ENCASED FOR A DISTANCE NOT LESS THAN TEN FEET (10') TO EACH SIDE OF THE CENTERLINE OF THE WATER MAIN.
- ALL CONTRACTORS INSTALLING SEWER MAINS THAT WILL BE UNDER THE JURISDICTION OF THE CONTROLLING AGENCY MUST BE CLASS "A" CONTRACTORS.
- THE CITY OF LAS VEGAS WILL NOT ACCEPT ANY SEWER MAINS WHICH HAVE A VERTICAL DEFLECTION OF MORE THAN ONE TENTH (0.1) OF A FOOT FROM THE APPROVED CONSTRUCTION PLANS. SEWER MAINS FOUND TO EXCEED THIS TOLERANCE WILL HAVE TO BE REPAIRED OR REMOVED AND REPLACED TO THE SATISFACTION OF THE CITY ENGINEER PRIOR TO ACCEPTANCE BY THE CITY.



### LVWD WATER NOTES

- NO WORK SHALL BEGIN UNTIL THE WATER PLANS HAVE BEEN RELEASED FOR CONSTRUCTION BY THE LVWD. FOLLOWING WATER PLAN APPROVAL, 48 HOUR NOTICE SHALL BE GIVEN TO THE LVWD COMMUNICATION SUPPORT CENTER (258-7171) PRIOR TO THE START OF CONSTRUCTION. NOTICE MUST BE GIVEN BY 2:00 P.M. THE BUSINESS DAY PRIOR TO A LVWD INSPECTION.
- ALL WORK SHALL CONFORM TO THE LVWD'S STANDARD PLATES, DRAWINGS, AND SPECIFICATIONS AND THE UNIFORM DESIGN AND CONSTRUCTION STANDARDS FOR WATER DISTRIBUTION SYSTEMS (UDACS), LATEST EDITION.
- ALL WORK, EXCEPT AS MODIFIED BY THESE PLANS OR BY NOTE 2, SHALL BE DONE IN ACCORDANCE WITH THE MOST CURRENT DRAFT OR EDITION OF THE UNIFORM STANDARD SPECIFICATIONS FOR PUBLIC WORKS CONSTRUCTION OFF-SITE IMPROVEMENT, CLARK COUNTY AREA.
- A SINGLE PIPE MATERIAL SHALL BE USED THROUGHOUT THE PROJECT UNLESS OTHERWISE APPROVED BY THE LVWD.
- ALL SERVICE LATERALS TWO (2) INCHES IN DIAMETER AND SMALLER SHALL BE COPPER TUBING WITH LVWD APPROVED SERVICE SADDLES.
- ALL WATER METER BOXES SHALL BE LOCATED OUTSIDE OF DRIVEWAY AREAS.
- ALL VALVES SHALL BE LOCATED OUTSIDE OF DRIVEWAYS, VALLEY AND CURB GUTTERS.
- THE FOLLOWING REQUIREMENTS MUST BE MET IN THE EVENT A WATER LINE AND SANITARY OR STORM SEWER LINE CROSS:  
 A. A MINIMUM EIGHTEEN (18) INCH VERTICAL SEPARATION (OUTSIDE TO OUTSIDE) MUST BE MAINTAINED WHEN THE WATER LINE IS INSTALLED OVER THE SANITARY OR STORM SEWER LINE. IF THE VERTICAL SEPARATION CANNOT BE MAINTAINED OR THE WATER LINE MUST BE PLACED UNDER THE SANITARY OR STORM SEWER LINE, THE SANITARY OR STORM SEWER LINE MUST BE CONSTRUCTED WITH ONE OF THE FOLLOWING OR, AS SHOWN ON THESE PLANS:  
 A. POTABLE WATER SUPPLY QUALITY MATERIAL.  
 B. ENCASEMENT, WITH FOUR (4) INCH CONCRETE (MINIMUM) C. SLEEVING WITH POTABLE WATER SUPPLY QUALITY PIPE.  
 EACH PROVISION MUST EXTEND ALONG THE SANITARY OR STORM SEWER, ON EITHER SIDE OF THE MAIN, A MINIMUM 10 FOOT DISTANCE PERPENDICULAR TO THE WATER MAIN EXTERIOR.
- WARNING TAPE SHALL BE REQUIRED OVER ALL MAINS, ALL SIX (6) INCH DIAMETER AND LARGER SERVICE LATERALS, AND ANY SERVICE LATERAL NOT INSTALLED PERPENDICULAR TO THE MAIN IN ACCORDANCE WITH STANDARD PLATE NO. 27.
- ALL WATER FACILITIES SHALL BE FILLED, DISINFECTED, PRESSURE TESTED, FLUSHED, FILLED AND AN ACCEPTABLE WATER SAMPLE OBTAINED, PRIOR TO CONNECTION TO THE LVWD'S DISTRIBUTION SYSTEM.
- THE CONTRACTOR MUST OBTAIN ALL METERS TWO (2) INCHES AND SMALLER FROM LVWD CENTRAL STORES. TELEPHONE 258-3152 FORTY-EIGHT (48) HOURS PRIOR.
- CONSTRUCTION MAY INTERRUPT SERVICE, WITH LVWD APPROVAL AND PROPER NOTIFICATION, BETWEEN THE HOURS OF 10 PM AND 6 AM, SUNDAY THROUGH THURSDAY. CIRCUMSTANCES MAY REQUIRE TEMPORARY SERVICE FEES BE INSTALLED, WITHOUT LVWD REIMBURSEMENT. ANY TEMPORARY SERVICE FEE MUST HAVE PRIOR LVWD APPROVAL.
- ALL WATER FACILITY CONSTRUCTION MATERIALS USED MUST BE AS LISTED ON THE LVWD'S PRE-APPROVED MATERIALS AND MANUFACTURER'S LISTING FOR NEW FACILITIES, LATEST REVISION, OR SPECIFICALLY APPROVED ON THESE PLANS.

### APPROVALS

NEVADA POWER COMPANY approves the point of service to the street light system. This shall not be deemed to consent the placement of the light poles which may be in conflict with Nevada Power Company's prior rights and/or facilities.

(Date) 10-2-95  
 By Janita Roduquoy  
 NEVADA POWER COMPANY

This approval is only for the placement and clearance of street light and signal light installation.

12/6/97 2-28-97  
 LAS VEGAS VALLEY WATER DISTRICT DATE

10-3-95  
 CLV FIRE DEPARTMENT DATE

REV.	DATE	DESCRIPTION
01	06/27/97	REVISED SEWER LINE PROFILE
02	07/17/97	REVISED SEWER LINE PROFILE
03	08/19/97	REVISED SEWER LINE PROFILE
04	08/19/95	REVISED SEWER LINE PROFILE

RECOMMENDED BY: [Signature]  
 DATE: 8/3/95  
 R.E. NO.: 3784  
 LEONARDO V. DELUNA

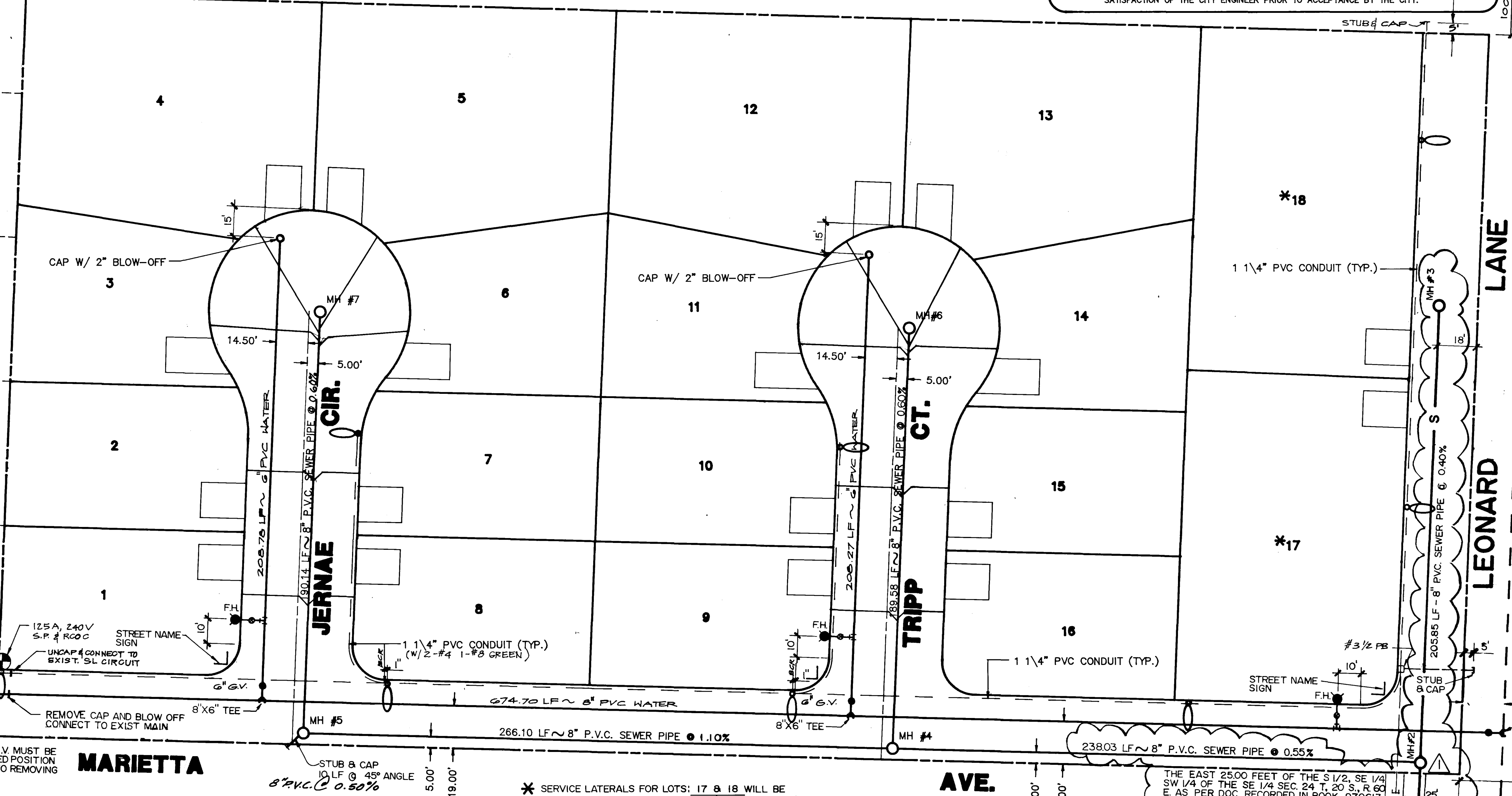
**DeLUNA, INC.**  
 ENGINEERING • PLANNING • SURVEYING  
 7310 SMOKE RANCH ROAD, SUITE 7, LAS VEGAS, NEVADA 89109, (702) 285-0242

SHEET CONTENTS:  
 KAY L. DIXON PROPERTIES  
 DIXON ESTATES  
 UTILITY PLAN

SHEET 3  
 OF 7 SHEETS

EXISTING OESTE VILLAS - UNIT 5  
 BOOK 51 PAGE 21

THIS PROPERTY MAY HAVE STATIC WATER PRESSURE IN EXCESS OF 80 PSI. THE UNIFORM PLUMBING CODE REQUIRES THAT INDIVIDUAL, ON-SITE (PRIVATE), PRESSURE REDUCING VALVES BE INSTALLED WHENEVER THE PRESSURE EXCEEDS 80 PSI. PRVs ARE THE DEVELOPER'S RESPONSIBILITY AND WILL NOT BE INSPECTED OR INCLUDED IN THE ACCEPTANCE OF LVWD FACILITIES.



### MARIETTA

LOTS 4, 5, 12, 13, 17 & 18 TO HAVE 3/4" METERS  
 THE BALANCE OF THE LOTS TO HAVE 5/8" METERS.

\* SERVICE LATERALS FOR LOTS: 17 & 18 WILL BE TAPPED ON EXIST. MAIN BY OWNER'S CONTRACTOR UNDER DIRECTION OF THE LVWD.

THE EAST 25.00 FEET OF THE S 1/2, SE 1/4 SW 1/4 OF THE SE 1/4 SEC. 24 T. 20 S., R. 60 E. AS PER DOC. RECORDED IN BOOK 970613, INST. NO. 00856 (SEWER EASEMENT)

### LAS VEGAS FIRE DEPT.

FIRE FLOW REQUIREMENT IS 1500 GALLONS PER MINUTE AT 20 POUND PER SQUARE INCH RESIDUAL.

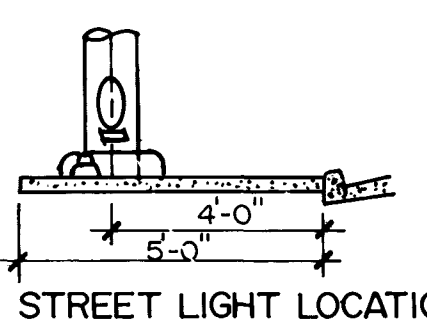
BASED ON:

SQUARE FOOTAGE	2,000
LARGEST AREA BETWEEN AREA SEPARATION WALLS	N/A
HEIGHT	ONE (1) STOREY
TYPE OF CONSTRUCTION	TYPE V
EXPOSURES	10'
SPRINKLER SYSTEM	NO
OCCUPANCY	R-3
ROOF CONSTRUCTION	CONCRETE TILES

REVIEWED BY: \_\_\_\_\_  
 DATE: \_\_\_\_\_

### C L V STREETLIGHT NOTES

- ALL STREET LIGHT INSTALLATIONS SHALL CONFORM TO THE STANDARD DETAILS AND SPECIFICATIONS OF THE CITY OF LAS VEGAS, AND SHALL ALSO CONFORM TO THE UNIFORM STANDARD SPECIFICATIONS FOR PUBLIC WORKS CONSTRUCTION OF OFF-SITE IMPROVEMENTS, CLARK COUNTY AREA, LATEST EDITION, UNLESS OTHERWISE NOTED.



**STREET LIGHT NOTE:**  
 ALL HAND HOLE COVERS MUST BE INSTALLED, POLE CAPS POURED, AND PULL BOX LIDS BOLTED DOWN PRIOR TO ENERGIZING CIRCUIT. ALL WIRE MUST HAVE THW INSULATION.

### ESTIMATE OF QUANTITIES

STD. F.H. WITH 6" GATE VALVE & 6" PVC LAT.	3 EA
8" PVC WATER	886 LF
6" GATE VALVE WITH VALVE BOX & COVER	2 EA
6" TAPPING TEE WITH 6" GATE VALVE	1 EA
1" WATER SERVICE LATERAL	18 EA
METER BOX	18 EA
2" BLOW-OFF ASSEMBLY	2 EA
3/4" METER	6 EA
5/8" METER	12 EA

ALL METERS 1" AND SMALLER REQUIRE 1" COPPER SERVICE LATERALS. A 1" X 3/4" ANGLE METER STOP IS REQUIRED WITH 5/8" OR 3/4" METERS. MINIMUM 3/4" METER BOX. DETAILS OF THE ABOVE INSTALLATION ARE AVAILABLE FROM THE ENGINEERING SERVICES DIVISION AND FROM DISTRICT INSPECTORS.

### LEGEND

