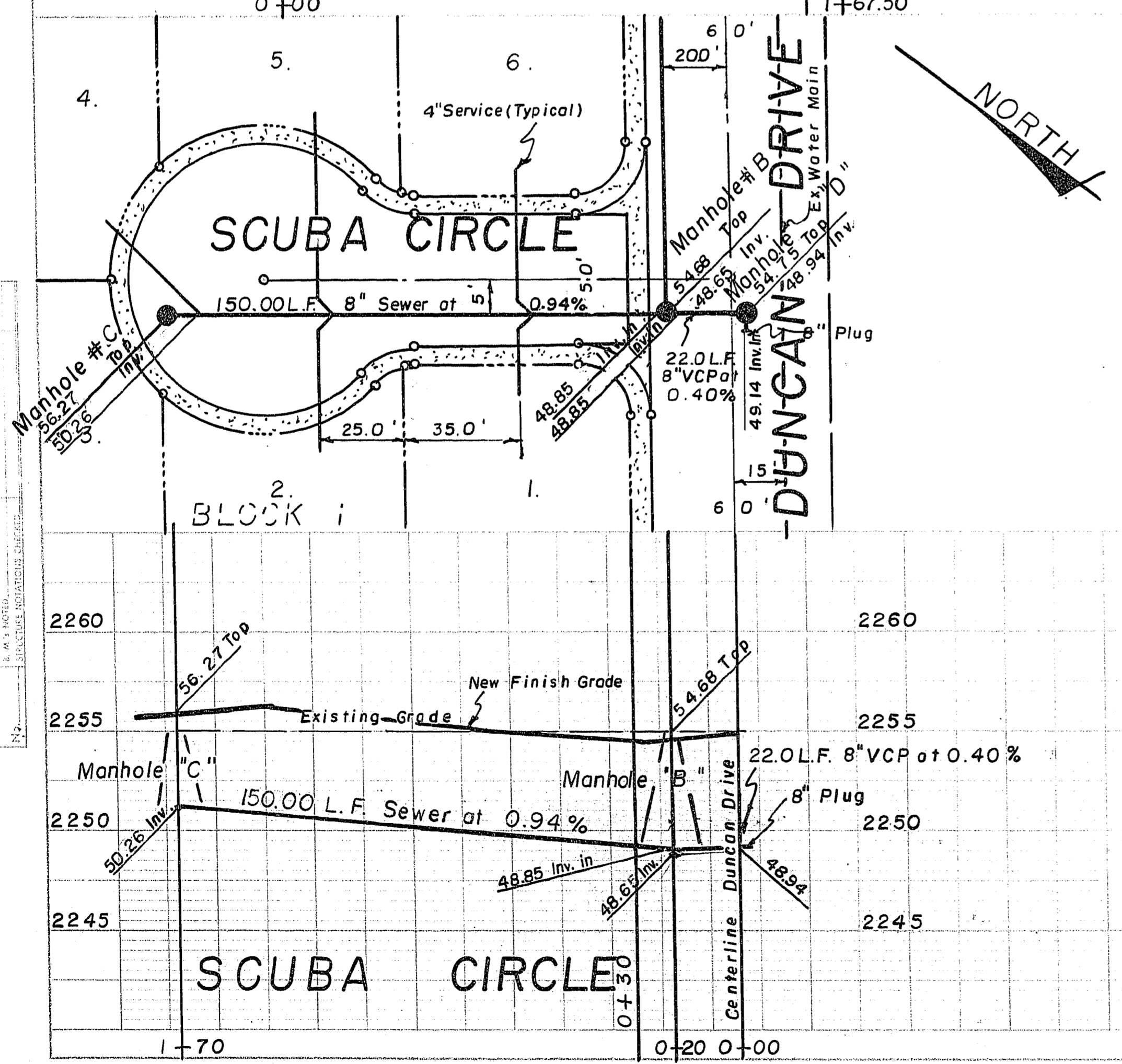
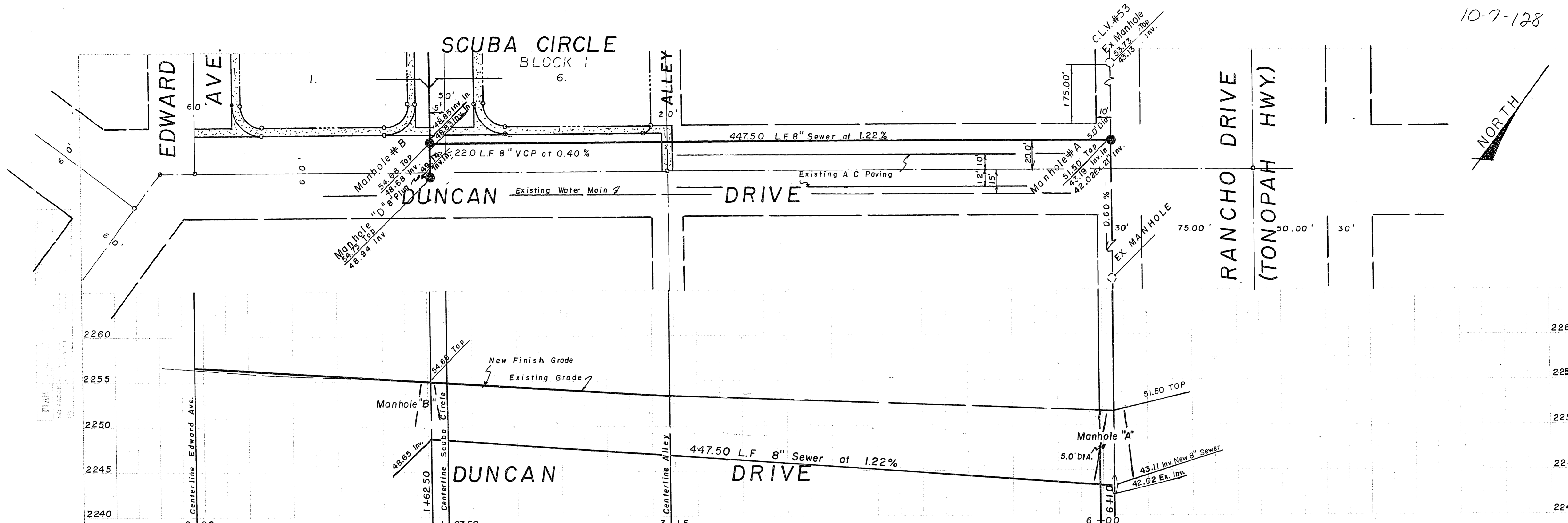


10-7-128



HORIZONTAL SCALE 1" = 30.00'  
 VERTICAL SCALE 1" = 5.00'

**NOTE:**

All construction and materials shall be in accordance with the "Uniform Standard Specifications for Public Works Construction Off-site Improvements, Clark County Area Nevada" issued 1978, City of Las Vegas Standard Drawings, any other applicable approved standards issued by the controlling agency, the Uniform Building Code, and all local City codes and ordinances applicable.

**BENCH MARK**  
 City of Las Vegas Sewer Manhole # 53  
 205.00 Ft. NW Centerline of Duncan Drive  
 Invert Elevation 2248.33



**APPROVALS**

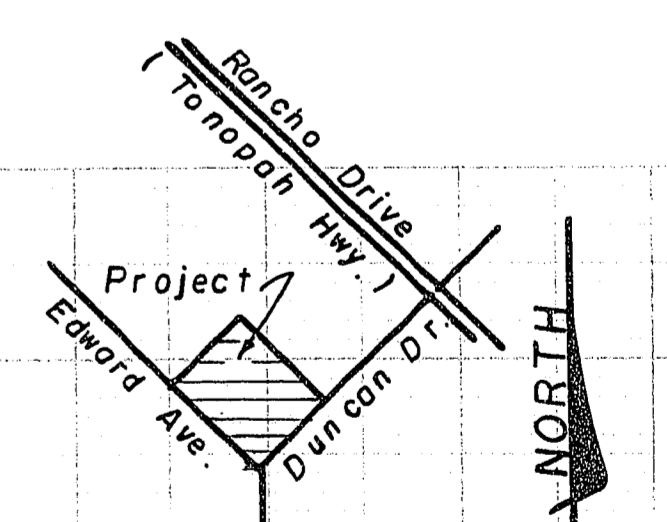
*Karsten T. Bronken* 8/8/83  
 Consulting Engineer Date  
*L.A. Anton* 10-12-83  
 C.L.V. Sanitation Chief Date  
*William Clark* 10-24-83  
 C.L.V. Engineer Date  
*James B. Smith* 10/12/85  
 C.L.V. Quality Control Engineer Date  
 C.L.V. Chief Land Development & Flood Control Date

**KARSTEN T. BRONKEN**  
 Consulting Engineers  
 1818 Industrial Rd., Las Vegas, NV 89102  
 Phone 382-6660

**MATERIALS LIST**

3 each 4.00' Dia. Manhole  
 1 each 5.00' Dia. Manhole  
 6 each 4" Services  
 620.00 L.F. 8" Sewer Main  
 1 each 8" Plug

**LOCATION MAP**



**SEWER PLAN AND PROFILE  
 DUNCAN COURT  
 SUBDIVISION**