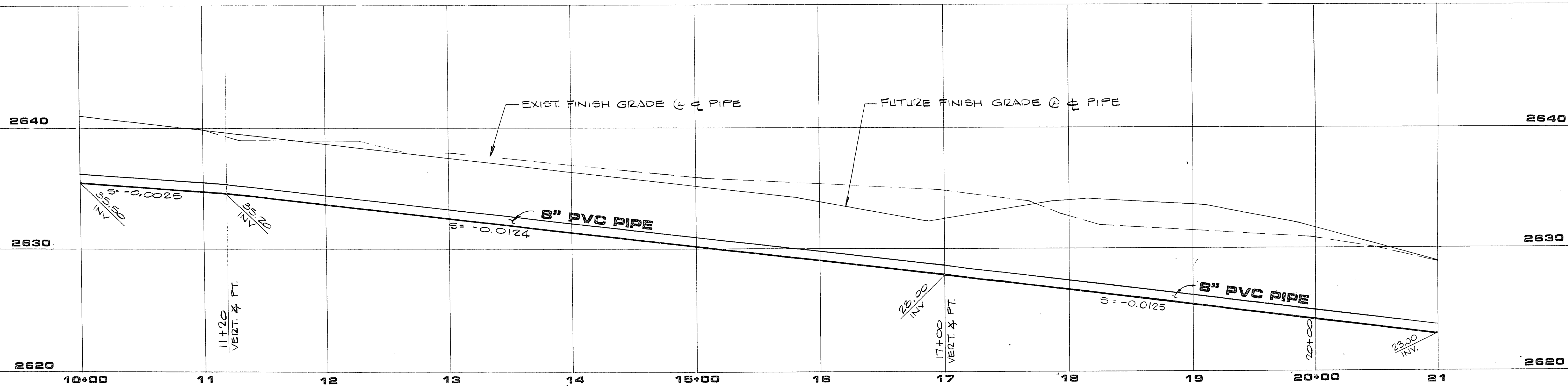
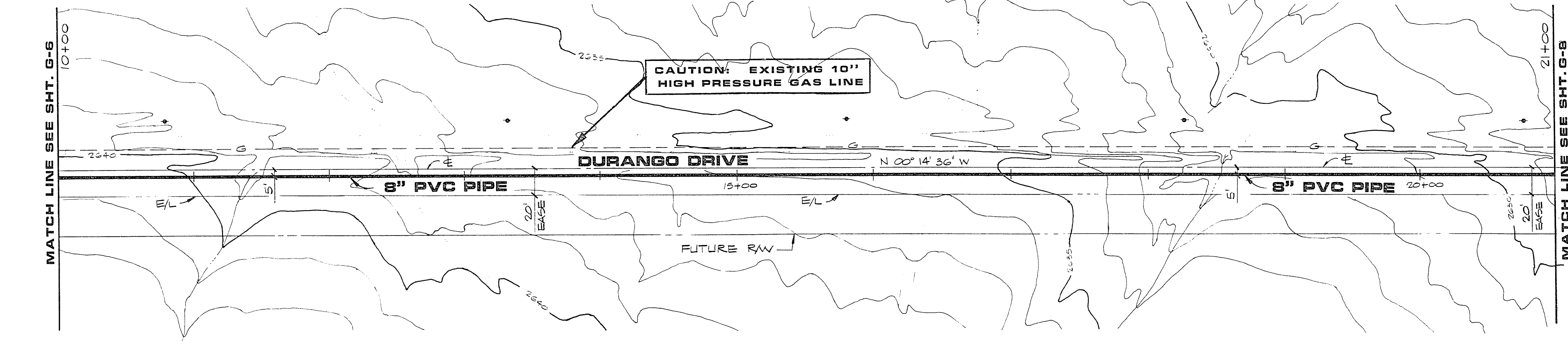
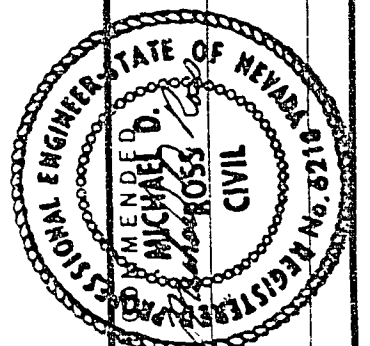


JOB NO. 412.150

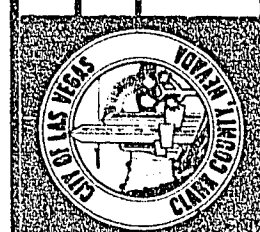


NOTE:
1. FUTURE FINISHED GRADE FROM ESI,
NO 830802, DATED 1/7/84



G.C. WALLACE, Inc.
Consulting Engineers, Inc.
1555 South Rainbow Blvd. • Las Vegas, Nevada 89102 • 363-1200

CITY OF LAS VEGAS
DURANGO DRIVE LIFT STATION
SEWAGE FORCE MAIN
STA. 10+00 TO STA. 21+00



SHEET
9-7
OF 15 SHEETS

REV	DATE	DESCRIPTION
1	1/7/84	AS BUILT - NO REVISIONS
2	10/17/84	AS BUILT - NO REVISIONS

AS BUILT DRAWING
27-1-9 307-V578