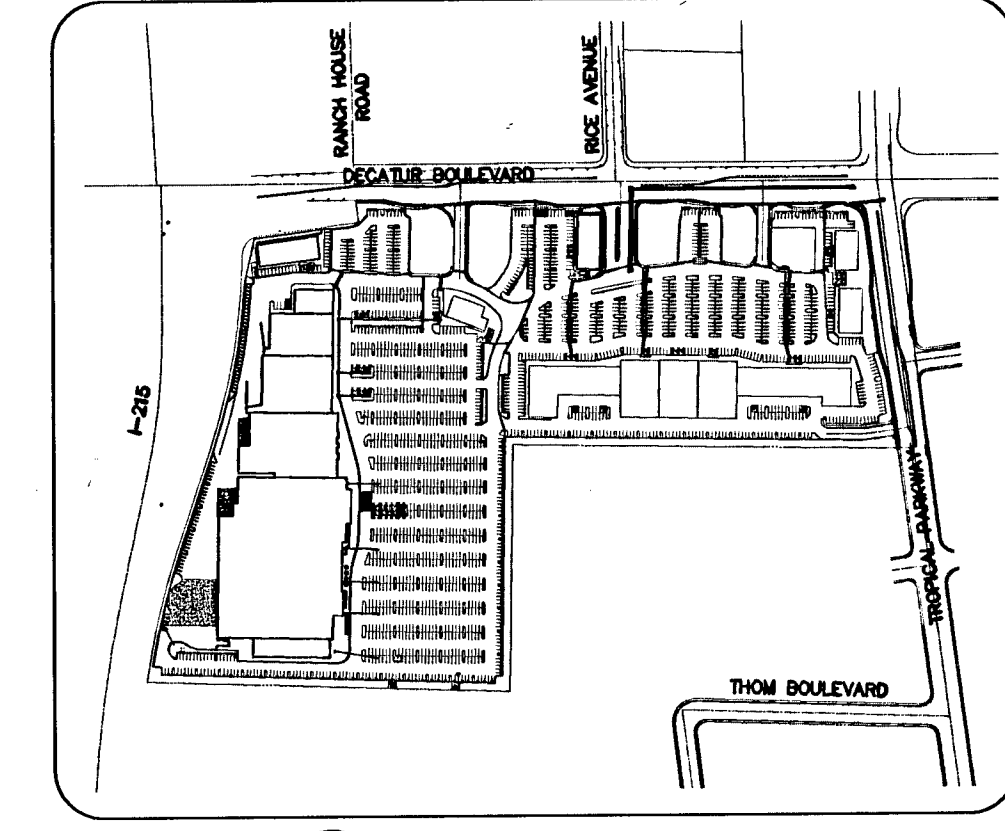


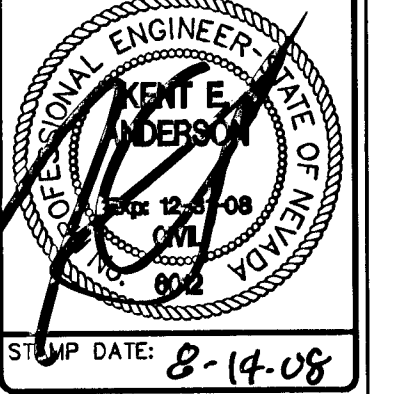
FOR CONTINUATION SEE SHEET 33



REVISION DESCRIPTION table with columns for NO., DATE, BY, and APPROVED. It lists several revisions to the plan, including changes to manhole elevations and pipe materials.

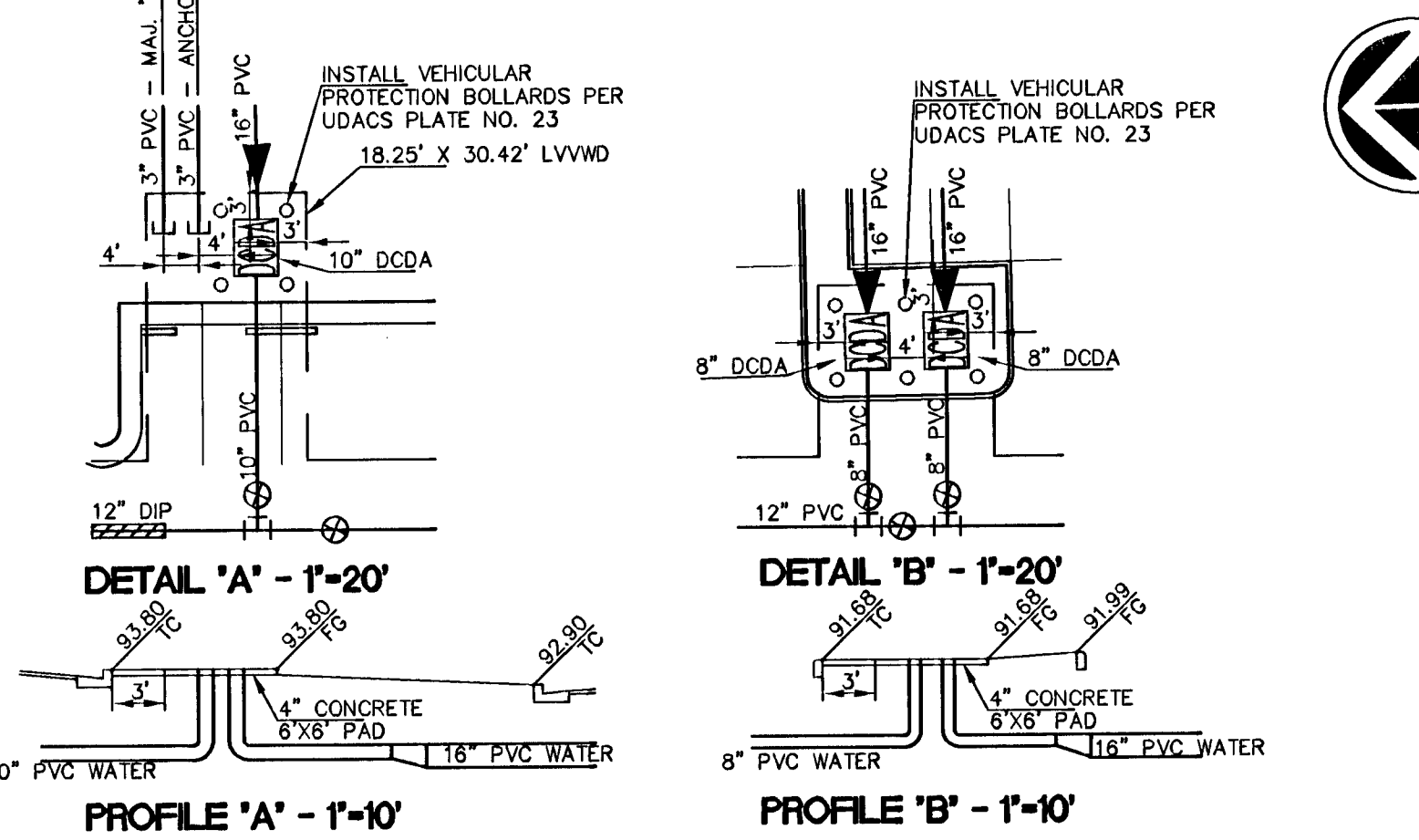
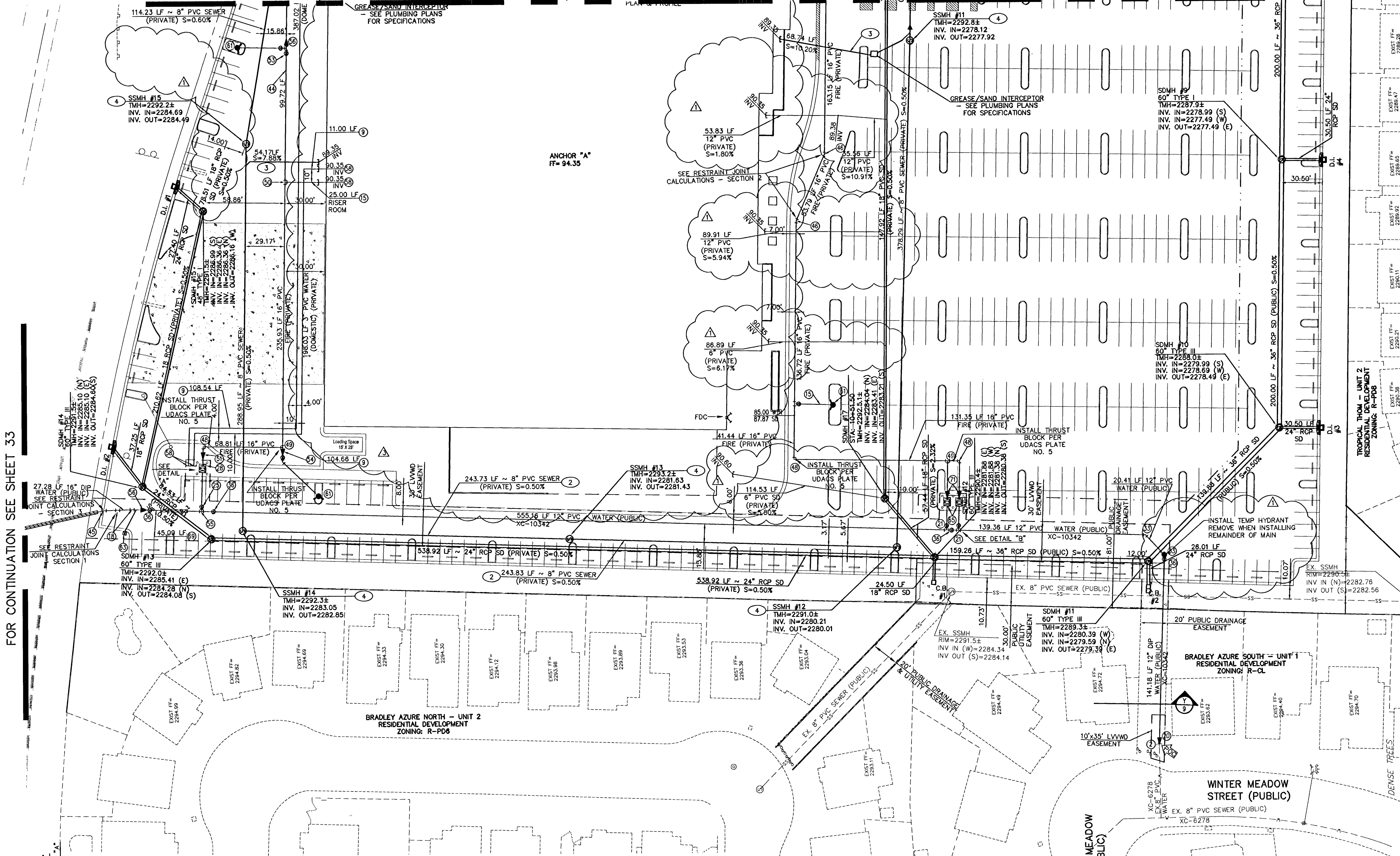
WATER CONSTRUCTION NOTES

- 1. POINT OF CONNECTION REMOVE CAP AND BLOW OFF PER UDACS PLATE NO. 4A, NOTE NO. 1, AND CONNECT TO EXISTING 10" STUB \*SEE NOTE 1
2. POINT OF CONNECTION REMOVE CAP AND BLOW OFF PER UDACS PLATE NO. 4A, NOTE NO. 1, AND CONNECT TO EXISTING 8" STUB \*SEE NOTE 1
3. INSTALL 1" COPPER WATERLINE (PUBLIC)
4. INSTALL 1" METER AND 1" R.P.P.A. (R.RIGATION) (BRASS PIPING BETWEEN METER AND R.P.P.A.) PER UDACS PLATE NO. 1D & 11A
5. INSTALL 1-1/2" METER AND 1-1/2" R.P.P.A. (BRASS PIPING BETWEEN METER AND R.P.P.A.) PER UDACS PLATE NO. 1D & 11A
6. INSTALL 2" METER AND 2" R.P.P.A. (BRASS PIPING BETWEEN METER AND R.P.P.A.) PER UDACS PLATE NO. 1D & 11A
7. INSTALL 1-1/2" PVC WATERLINE (PUBLIC)
8. INSTALL 2" PVC WATERLINE (PUBLIC)
9. INSTALL 3" PVC WATERLINE (DOMESTIC) (PRIVATE)
10. POINT OF CONNECTION INSTALL 12" X 12" W/ OR APPROVED EQUAL TAPPING SLEEVE W/ TAPPING VALVE PER UDACS PLATE NO. 22 & 8
11. INSTALL 6" 90° BEND PER UDACS PLATE NO. 5
12. INSTALL 6" X 1-1/2" SERVICE SADDLE PER UDACS PLATE NO. 1D
13. INSTALL 6" X 1" SERVICE SADDLE PER UDACS PLATE NO. 1D
14. INSTALL 6" 45° BEND PER UDACS PLATE NO. 5
15. INSTALL 6" PVC FIRE (PRIVATE) (FIRE)
16. INSTALL 6" 11.25° BEND PER UDACS PLATE NO. 5
17. INSTALL 6" 22.5° BEND PER UDACS PLATE NO. 5
18. INSTALL 16" 45° BEND PER UDACS PLATE NO. 5
19. INSTALL 12" X 10" REDUCER PER UDACS PLATE NO. 3
20. INSTALL 12" X 8" REDUCER PER UDACS PLATE NO. 3
21. INSTALL 12" X 8" TEE PER UDACS PLATE NO. 5
22. INSTALL 10" 90° BEND PER UDACS PLATE NO. 5
23. INSTALL 8" X 6" REDUCER PER UDACS PLATE NO. 3
24. INSTALL 10" PVC WATERLINE (PUBLIC)
25. INSTALL 10" GATE VALVE PER UDACS PLATE NO. 3 & 8
26. INSTALL 10" X 6" REDUCER PER UDACS PLATE NO. 3
27. INSTALL 10" 45° BEND PER UDACS PLATE NO. 5
28. INSTALL 10" D.C.D.A. PER UDACS PLATE NO. 11C
29. INSTALL 12" PVC WATERLINE (PRIVATE)
30. INSTALL 12" 5° BEND RESTRAINED JOINT
31. INSTALL 12" 11.25° BEND PER UDACS PLATE NO. 5
32. INSTALL 12" 22.5° BEND PER UDACS PLATE NO. 5
33. INSTALL 12" 45° BEND PER UDACS PLATE NO. 5
34. INSTALL 12" 90° BEND PER UDACS PLATE NO. 5
35. INSTALL 12" TEE PER UDACS PLATE NO. 5
36. INSTALL 12" GATE VALVE PER UDACS PLATE NO. 3 & 8
37. INSTALL 12" X 6" REDUCER PER UDACS PLATE NO. 3
38. INSTALL 12" X 6" TEE PER UDACS PLATE NO. 5
39. INSTALL 6" X 2" SERVICE SADDLE PER UDACS PLATE NO. 1D
40. INSTALL 10" X 1-1/2" SERVICE SADDLE PER UDACS PLATE NO. 1D
41. INSTALL 10" X 2" SERVICE SADDLE PER UDACS PLATE NO. 1D
42. INSTALL 16" X 10" TEE PER UDACS PLATE NO. 5
43. INSTALL 12" PVC WATERLINE (PUBLIC)
44. INSTALL 16" PVC WATERLINE (PRIVATE) (FIRE)
45. INSTALL 16" 11.25° BEND PER UDACS PLATE NO. 5
46. INSTALL 16" 22.5° BEND PER UDACS PLATE NO. 5
47. NOT USED
48. INSTALL 16" 90° BEND PER UDACS PLATE NO. 5
49. INSTALL 16" TEE PER UDACS PLATE NO. 5
50. INSTALL 16" X 6" TEE PER UDACS PLATE NO. 5
51. INSTALL 16" X 10" REDUCER PER UDACS PLATE NO. 3
52. INSTALL 6" BLOWOFF PER UDACS PLATE NO. 4B
53. INSTALL 16" GATE VALVE PER UDACS PLATE NO. 3 & 8
54. INSTALL 16" X 6" REDUCER PER UDACS PLATE NO. 3
55. INSTALL 12" X 10" TEE PER UDACS PLATE NO. 5
56. INSTALL 16" X 12" REDUCER PER UDACS PLATE NO. 3
57. INSTALL STD. FIRE HYD. W/ ASSY. PER UDACS PLATE NO. 7
58. STUB AND CAP WATER PER UDACS PLATE NO. 4A
59. INSTALL 6" CAP W/ 2" BLOW OFF ASSY. PER UDACS PLATE NO. 4A
60. INSTALL PRIVATE FIRE HYD W/ ASSY. TO INCLUDE 12" X 6" TEE AND 8" GATE VALVE PER UDACS PLATE NO. 7
61. INSTALL PRIVATE FIRE HYD W/ ASSY. TO INCLUDE 16" X 6" TEE AND 8" GATE VALVE PER UDACS PLATE NO. 7
62. INSTALL 6" X 6" TEE PER UDACS PLATE NO. 5
63. INSTALL 4" AIR-VAC PER UDACS PLATE NO. 37
64. INSTALL 16" DIP WATERLINE (PUBLIC)
65. INSTALL 8" D.C.D.A. PER UDACS PLATE NO. 11C
66. INSTALL 10" X 6" TEE PER UDACS PLATE NO. 5
67. INSTALL 6" DIP WATERLINE (PUBLIC)
68. INSTALL 10" DIP WATERLINE (PUBLIC)
69. INSTALL 12" DIP WATERLINE (PUBLIC)
70. INSTALL 6" PVC WATERLINE (PUBLIC)
71. INSTALL 16" X 8" REDUCER PER UDACS PLATE NO. 3
NOTE 1: CONTRACTOR TO VERIFY HORIZONTAL AND VERTICAL LOCATION OF EXISTING WATER MAIN PRIOR TO CONSTRUCTION. NOTIFY ENGINEER OF ANY DISCREPANCY WITH THESE DWG.

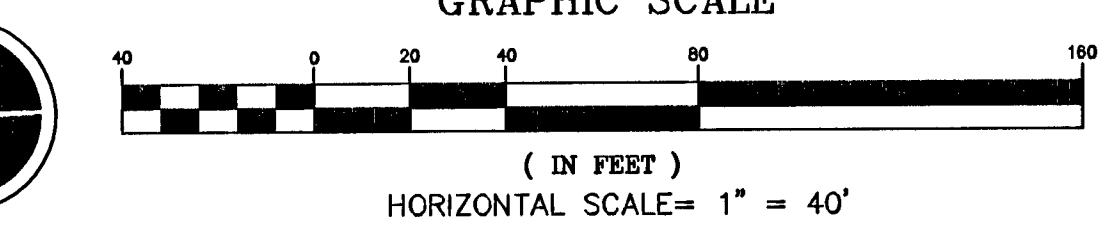


3610 North Rancho Drive Las Vegas, Nevada 89130 Telephone: (702) 646-9143 Fax: (702) 646-4143 SOUTHWEST LAND PLANNING • DEVELOPMENT

UTILITY PLAN V PROJECT TITLE: DECATUR & TROPICAL DECATUR 215, LLC CITY OF LAS VEGAS PROJECT WORK ORDER NO: 070619 DESIGN BY: KDS DRAWN BY: KDS/HK DATE: Aug 14, 2008 SCALE: 1" = 40' SHEET 24 OF 45 SHEETS GLV DWG NO. 1074462



NOTICE TO CONTRACTOR! EXISTING UTILITY LOCATIONS SHOWN HEREON ARE APPROXIMATE ONLY. IT SHALL BE THE CONTRACTOR'S RESPONSIBILITY TO DETERMINE THE EXACT VERTICAL AND HORIZONTAL LOCATION OF ALL EXISTING UNDERGROUND UTILITIES PRIOR TO COMMENCING CONSTRUCTION. NO REPRESENTATION IS MADE THAT ALL EXISTING UTILITIES ARE SHOWN HEREON. THE ENGINEER ASSUMES NO RESPONSIBILITY FOR UTILITIES NOT SHOWN OR UTILITIES NOT SHOWN IN THEIR PROPER LOCATION.



BASIS OF BEARING NORTH 02°01'35" EAST BEING THE CENTERLINE OF DECATUR BLVD. BETWEEN TROPICAL PARKWAY AND CENTENNIAL PARKWAY IN THE NORTHWEST QUARTER (NW 1/4) OF SECTION 30, TOWNSHIP 19 SOUTH, RANGE 61 EAST, M.D.M., CLARK COUNTY, NEVADA. AS SHOWN BY MAP IN THE OFFICE OF THE CLARK COUNTY, NEVADA RECORDER IN FILE 90 OF PARCEL MAPS PAGE 69.

BENCHMARK CITY OF LAS VEGAS VERTICAL CONTROL RIVET AND PLATE IN TOP OF CURB NW CORNER OF TROPICAL PARKWAY & THOM BOULEVARD STATION 8LVS90 2568 ELEVATION= 697.5653 METERS (NAV88) 2288.60 FEET

SEWER CONSTRUCTION NOTES 1. POINT OF CONNECTION INSTALL NEW MANHOLE ON EXIST. 18" PVC MAIN (PUBLIC) \*SEE NOTE 1 2. INSTALL 8" PVC SEWER LINE (PRIVATE) 3. INSTALL 6" PVC SEWER LATERAL (PRIVATE) 4. INSTALL STD. 48" SS MANHOLE PER CCWRD STD. DWG. SD-1A (PRIVATE) 5. INSTALL SS CLEAN-OUT \*NOTE 1: CONTRACTOR TO VERIFY HORIZONTAL AND VERTICAL LOCATION PRIOR TO CONSTRUCTION

APPROVAL FOR CONSTRUCTION [Signature] 8/22/08 DATE

LEGEND table defining symbols for Right of Way, Property Line, Center Line, Existing Curb & Gutter, Ex. Edge of Pavement, Existing Grade/Invert, Existing Water Valve, Proposed Water Valve, Existing Water Main, Proposed Water Main, Existing Sanitary Sewer Manhole, Proposed Sanitary Sewer Manhole, Existing Sanitary Sewer Main, Proposed Sanitary Sewer Main, Existing Fire Hydrant, Proposed Fire Hydrant, Existing Gas Main, Finish Floor.

NOTE SEE SHEET 2 FOR SEWER AND STORM DRAIN MANHOLE TABLE

NOTE ALL ABOVE GROUND UTILITY APPURTENANCES SHALL CONFORM TO THE REQUIREMENTS OF TITLE 19.12.040.

FIRE HYDRANT NOTE PUBLIC FIRE HYDRANTS LOCATED ON DECATUR BOULEVARD AND TROPICAL PARKWAY ARE RATED FOR 1500 GPM.

FIRE WATER AT DOMESTIC WATER CROSSING ALL NON-POTABLE FIRE WATER LINES CROSSING POTABLE DOMESTIC WATER LINES ARE TO BE INSTALLED WITH "A" VERTICAL SEPARATION OF NO LESS THAN SIX INCHES. AND IN ACCORDANCE WITH UDACS 2.20.01, 2.04.05, 2.19.02.B1 AND 2.10.02.B2.

APPROVAL FOR CONSTRUCTION 1ST. APPROVED 8-16-08 [Signature] 8-22-08 DATE LAS VEGAS VALLEY WATER DISTRICT PROJECT # 115171 (SHEETS: 1, 2, 9, 19-22, 24-27, 33, 34, 41)