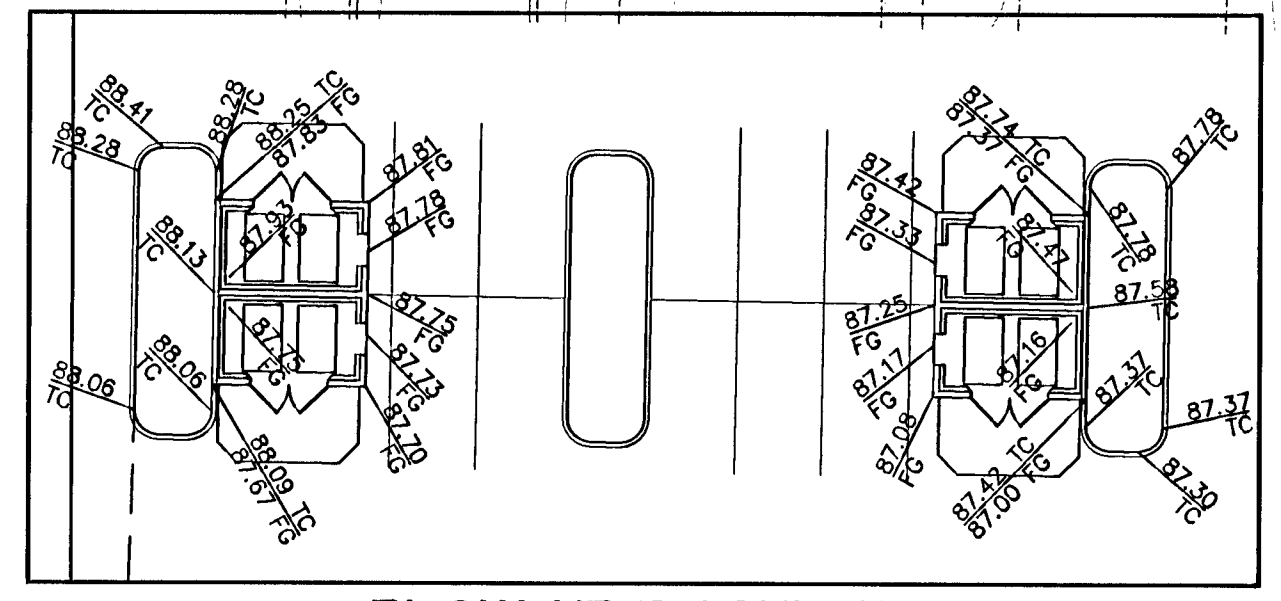
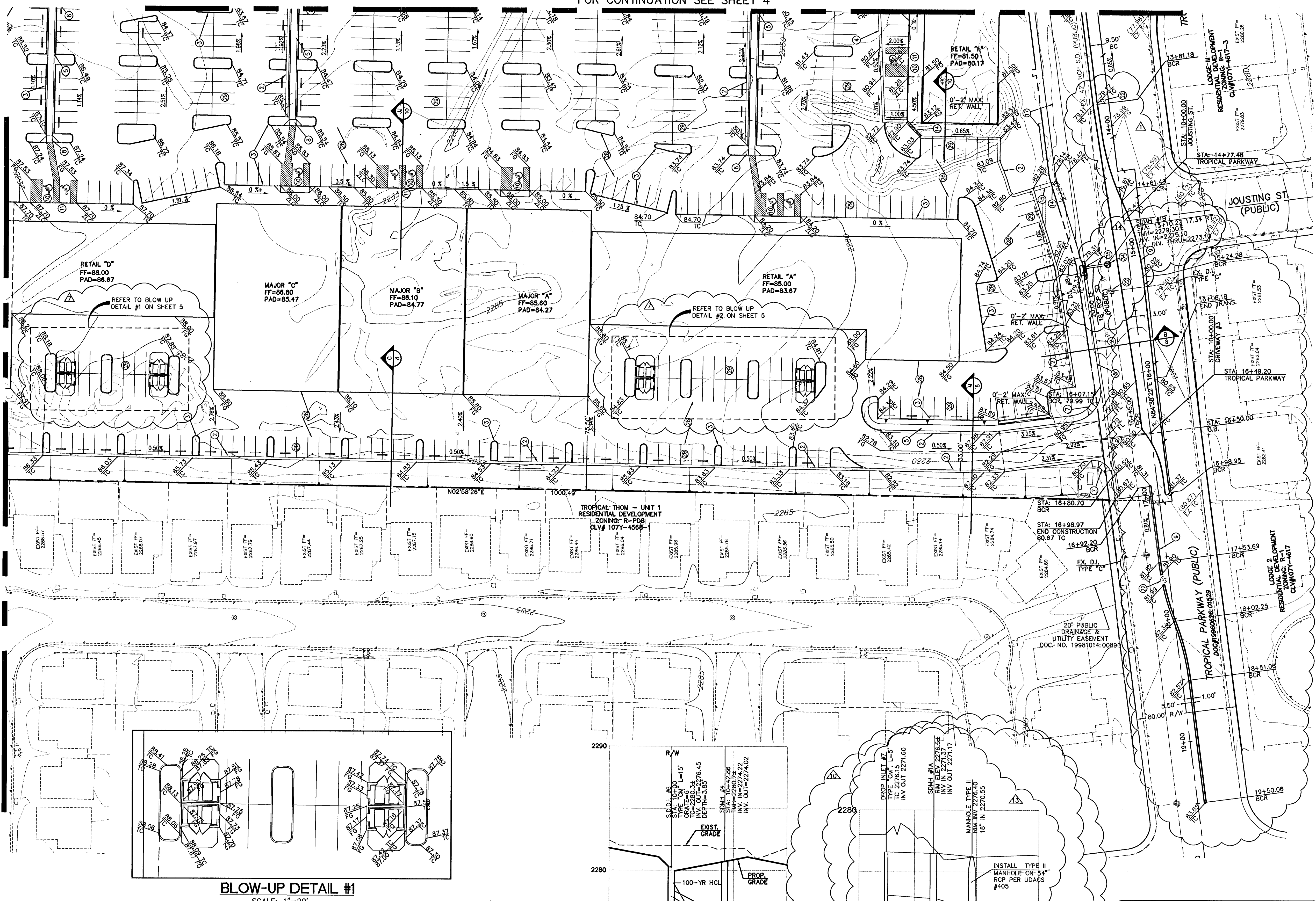
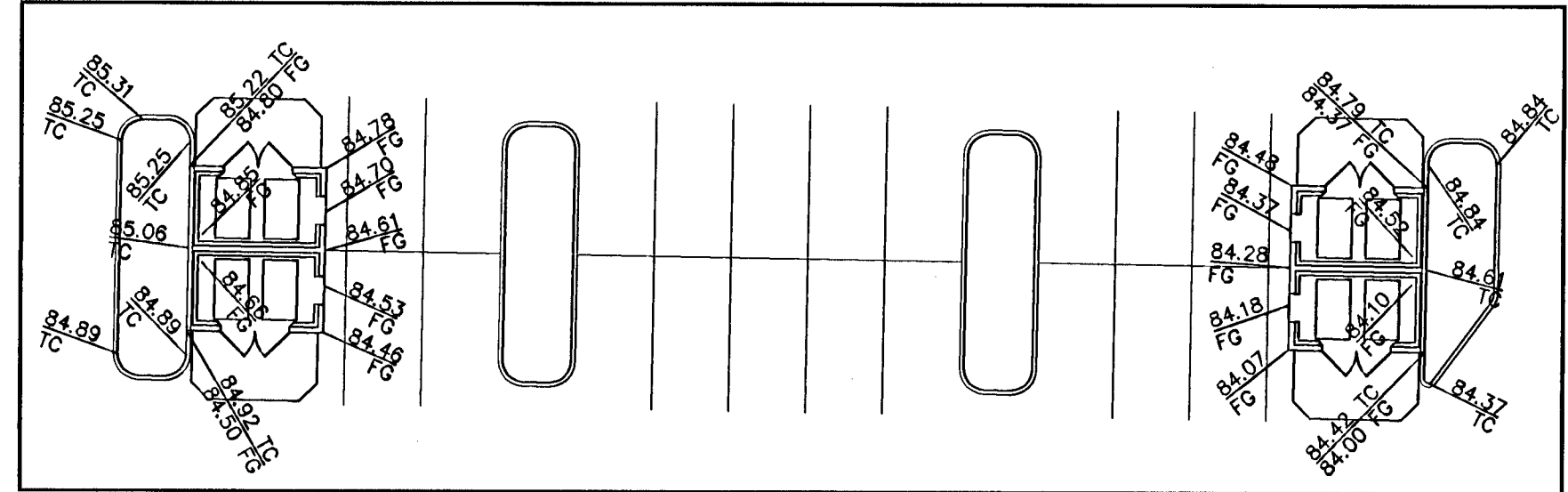


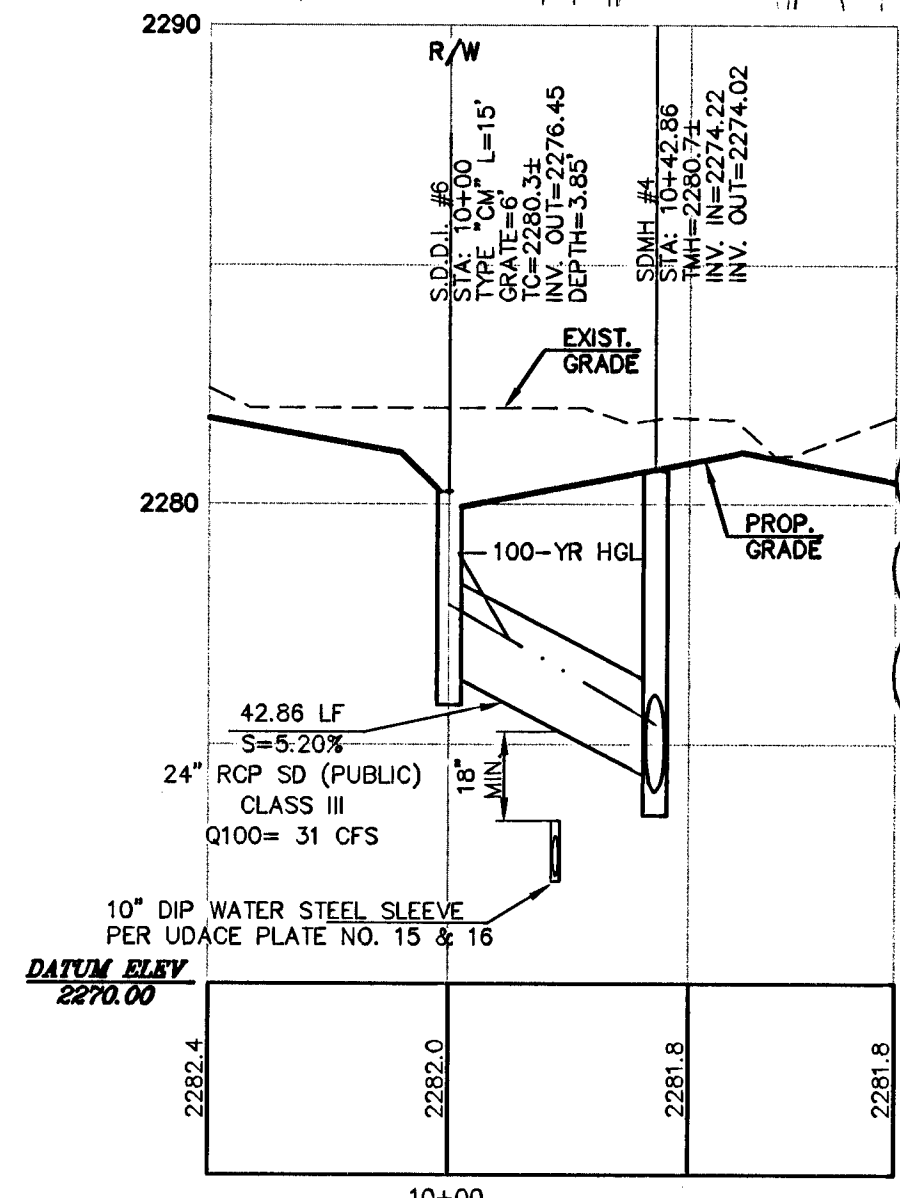
FOR CONTINUATION SEE SHEET 6



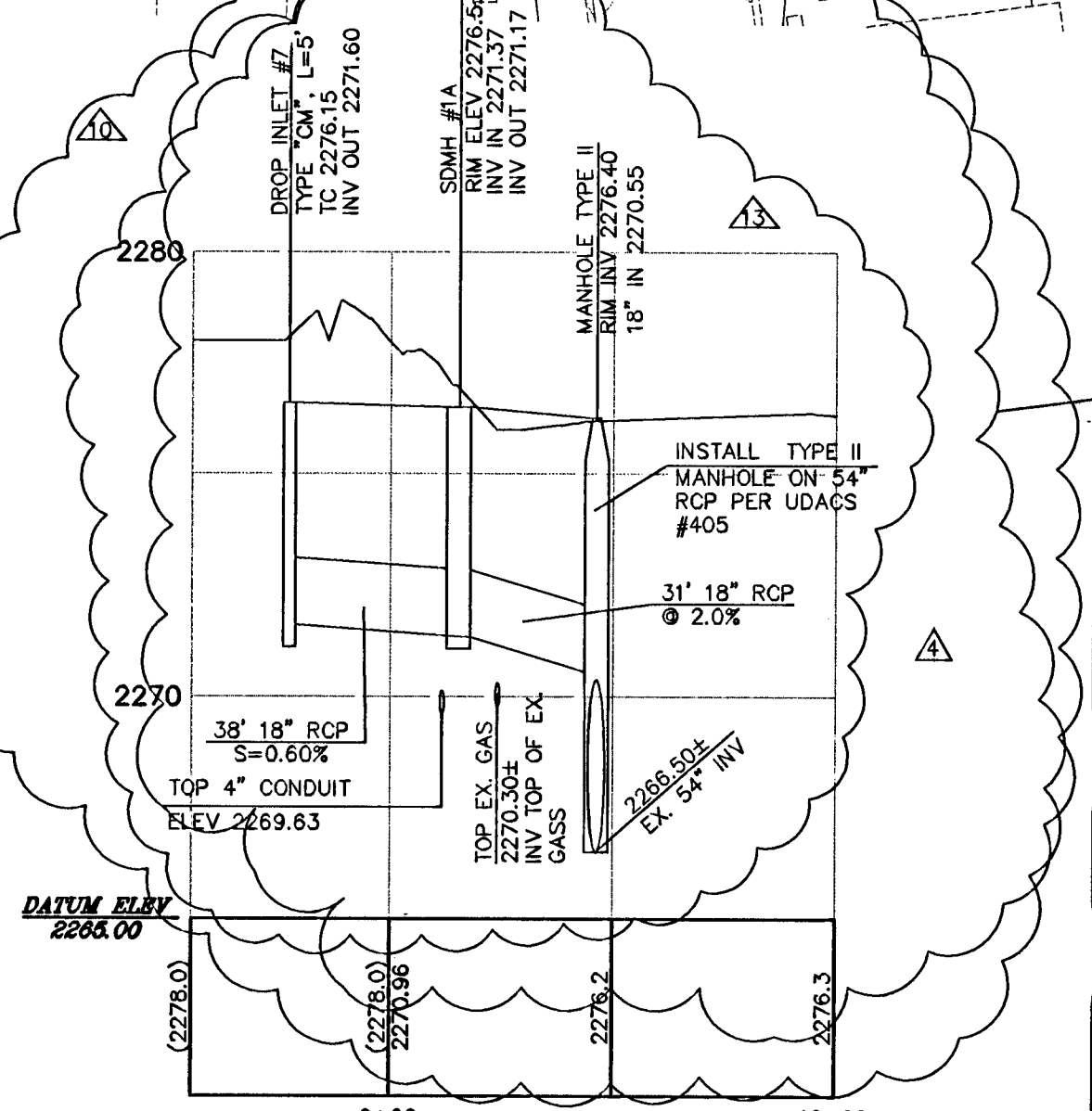
BLOW-UP DETAIL #1
SCALE: 1"=20'



BLOW-UP DETAIL #2
SCALE: 1"=20'



PROFILE DROP INLET #6
SCALE: HORIZONTAL = 1" = 40'
VERTICAL = 1" = 4'



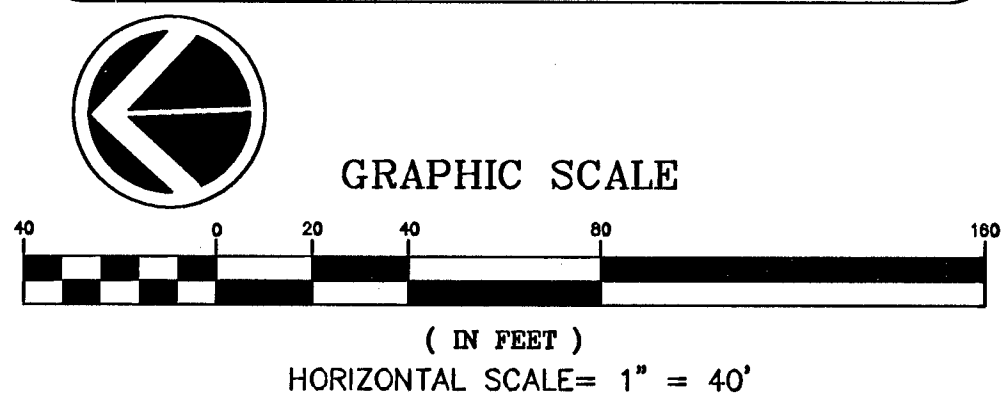
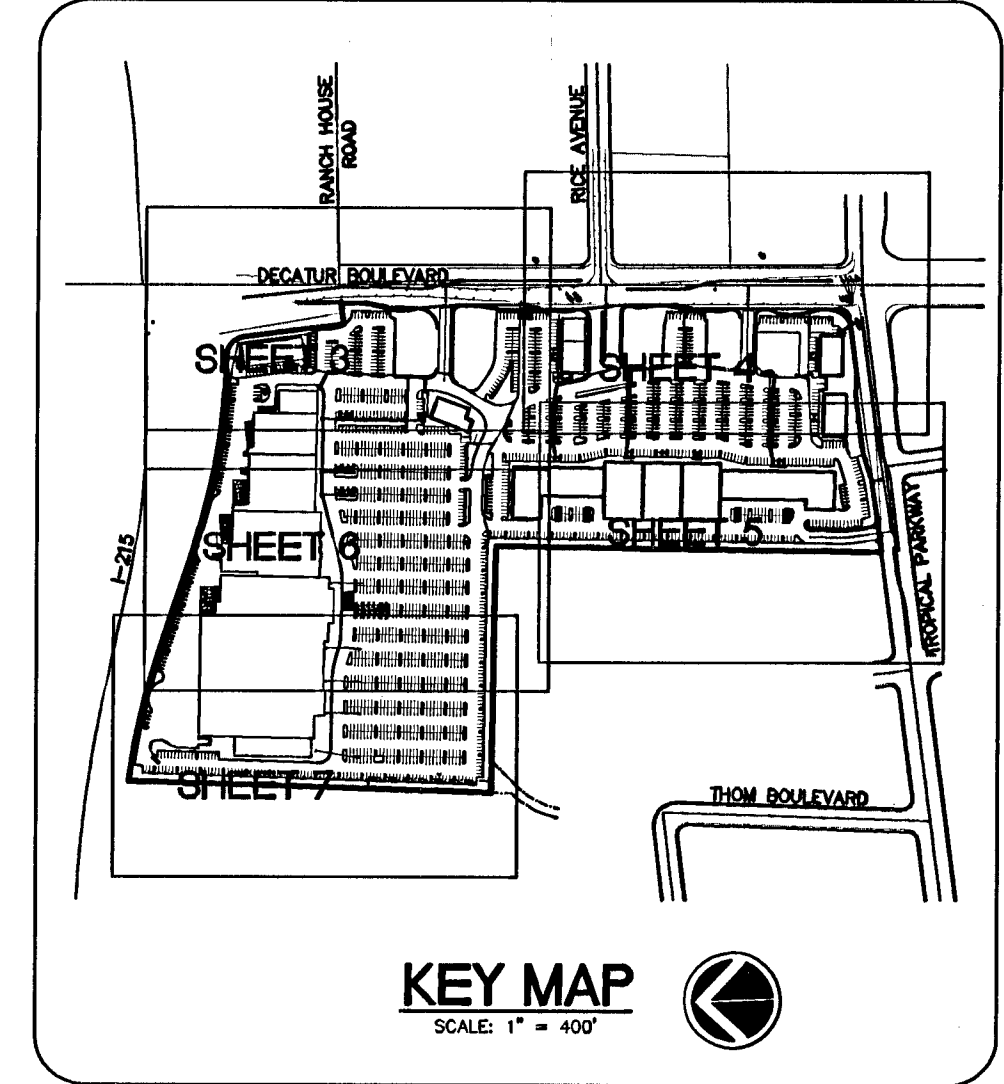
PROFILE DROP INLET #7
SCALE: HORIZONTAL = 1" = 40'
VERTICAL = 1" = 4'

SOILS REPORT
AN GRADING SHALL CONFIRM TO THE REQUIREMENTS OF THE GEOTECHNICAL REPORT PREPARED BY TERRACON CONSULTANTS, INC. FOR "DECATUR AND 215 COMMERCIAL DEVELOPMENT" #4075091 DATED NOVEMBER 16, 2007.

NOTE
SEE SHEET GRADING SHEET 3 FOR PUBLIC STORM DRAIN QUANTITIES.

EARTHWORK QUANTITIES
CUT = 35,503 CY
FILL = 58,428 CY
IMPORT = 22,925 CY
PER EARTHCALL REPORT DATED 9-25-07
EC JOB NUMBER: L070356

FLOOD ZONE
FLOOD ZONE DESIGNATION "X" PER F.E.M.A. FLOOD INSURANCE RATE MAP, COMMUNITY PANEL NUMBER 32003C1765 D, AUGUST 16, 1995.



- CONSTRUCTION NOTES**
- CONSTRUCT 30" ROLL CURB AND GUTTER PER USDOCA DWG. NO. 217A
 - CONSTRUCT "L" CURB AND GUTTER PER USDOCA DWG. NO. 216
 - CONSTRUCT "A" TYPE CURB PER USDOCA DWG. NO. 219
 - CONSTRUCT 24" VALLEY GUTTER PER DETAIL "L" ON SHEET 8
 - CONSTRUCT 5' SIDEWALK PER USDOCA DWG. NO. 234
 - CONSTRUCT 8' CROSS GUTTER PER USDOCA DWG. NO. 228
 - CONSTRUCT CASE I SIDEWALK RAMP (A=8', B=8') PER USDOCA DWG. NO. 235
 - CONSTRUCT CASE II SIDEWALK RAMP (A=12', B=12') PER USDOCA DWG. NO. 235
 - CONSTRUCT MEDIAN ISLAND PER USDOCA DWG. NO. 218
 - INSTALL HANDICAP STRIPING AND SIGNS PER DETAIL "P" ON SHEET 9
 - CONSTRUCT "O" CURB PER DETAIL "N" ON SHEET 9
 - CONSTRUCT 60" TYPE I MANHOLE PER USDOCA DWG. NO. 403
 - CONSTRUCT 48" TYPE I MANHOLE PER USDOCA DWG. NO. 403
 - INSTALL 2" SIDEWALK UNDER DRAIN PER USDOCA DWG. NO. 236
 - CONSTRUCT 36" CONCRETE FLUME PER DETAIL "R" SHEET 9
 - CONSTRUCT 36"x36" JENSEN PRECAST CATCH BASIN DWG. NO. 363636 SEE DETAIL "V" SHEET 9 (TYPE II)
 - CONSTRUCT BUS TURNOUT AND BUS STOP LOADING PAD PER USDOCA DWG. NO. 234.1 - 234.2
 - CONSTRUCT CATCH BASIN PER DETAIL "LL" SHEET 10
 - CONSTRUCT TYPE "CM" DROP INLET L=5' PER DETAIL "W" SHEET 9
 - CONSTRUCT TYPE "CM" DROP INLET L=5', 2 GRATES PER DETAIL "W" SHEET 9
 - ADJUST EX. MANHOLE RIM TO PROP. FINISHED GRADE AS NECESSARY
 - CONSTRUCT TYPE "CM" DROP INLET L=15', 6 GRATES PER DETAIL "W" SHEET 9
 - CONSTRUCT 5' MEANDERING SIDEWALK - SEE L/S ARCH. PLAN FOR LOCATION
 - VERT. RELOCATE EX. FENCE TO PROPOSED GRADES
 - CONSTRUCT 60" TYPE III MANHOLE PER USDOCA DWG. NO. 403
 - CONSTRUCT 48" TYPE II MANHOLE PER USDOCA DWG. NO. 403
 - 3" A.C. PAVING OVER 4" TYPE II AGGREGATE BASE
 - 2" A.C. PAVING OVER 4" TYPE II AGGREGATE BASE
 - HEAVY-DUTY CONCRETE CROSSWALK
 - INSTALL 3" WIDE MONOLITHIC CURB PER USDOCA. NO. 221
 - INSTALL LOCKING REMOVABLE BOLLARD POLE PER CLV STD. 421
 - INSTALL 5" STD. TYPE "A" DROP INLET PER USDOCA DWG. NO. 411
 - CONSTRUCT TYPE II MANHOLE PER DETAIL ON SHEET 17
 - CONSTRUCT TYPE "CM" DROP INLET L=7.5', 2 GRATES PER DETAIL "W" SHEET 9

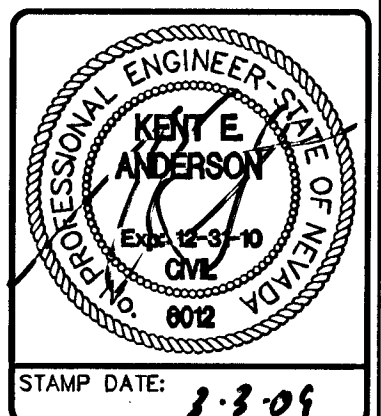
LEGAL DESCRIPTION
A PORTION OF THE EAST HALF (E 1/2) OF THE NORTHEAST QUARTER (NE 1/4) OF SECTION 25, AND THE WEST HALF (W 1/2) OF THE NORTHWEST QUARTER (NW 1/4) OF SECTION 30, TOWNSHIP 19 SOUTH, RANGE 60 EAST, M.D.M., CITY OF LAS VEGAS, CLARK COUNTY, NEVADA. BEING ALL OF PARCEL 3 ON FILE IN FILE 90 OF PARCEL MAPS, PAGE 69 IN THE OFFICE OF THE COUNTY RECORDER OF CLARK COUNTY, NEVADA.

BASIS OF BEARING
NORTH 02°01'35" EAST BEING THE CENTERLINE OF DECATUR BLVD. BETWEEN TROPICAL PARKWAY AND CENTENIAL PARKWAY IN THE NORTHWEST QUARTER (NW 1/4) OF SECTION 30, TOWNSHIP 19 SOUTH, RANGE 61 EAST, M.D.M., CLARK COUNTY, NEVADA, AS SHOWN BY MAP IN THE OFFICE OF THE CLARK COUNTY, NEVADA RECORDER IN FILE 90 OF PARCEL MAPS PAGE 69.

BENCHMARK
CITY OF LAS VEGAS VERTICAL CONTROL RIVET AND PLATE IN TOP OF CURB NW CORNER OF TROPICAL PARKWAY & THOM BOULEVARD
STATION 8LV90
ELEVATION= 697.5653 METERS (NAVD88)
2288.60 FEET

"I CERTIFY THAT THIS GRADING PLAN IS IN CONFORMANCE WITH THE APPROVED DRAINAGE PLAN FILE IN THE CITY OF LAS VEGAS FOR THIS PROJECT (0424261)
KENT E. ANDERSON, P.E. #6012
DATE 3.3.09

NO.	DATE	BY	APPROVED	REVISION DESCRIPTION
1	12/25/08	KEA		REVISE D.I. # 8
2	01/21/09	KEA		REVISE STORM DRAIN PROFILE
3	07/29/08	PAO		REVISE STORM DRAIN PROFILE
4	07/29/08	PAO		REVISE STORM DRAIN PROFILE
5	07/29/08	PAO		REVISE STORM DRAIN PROFILE
6	07/29/08	PAO		REVISE STORM DRAIN PROFILE
7	07/29/08	PAO		REVISE STORM DRAIN PROFILE
8	07/29/08	PAO		REVISE STORM DRAIN PROFILE
9	07/29/08	PAO		REVISE STORM DRAIN PROFILE
10	07/29/08	PAO		REVISE STORM DRAIN PROFILE



3610 North Rancho Drive
Las Vegas, Nevada 89130
Telephone: (702) 646-9700
Fax: (702) 646-1143

SOUTHWEST ENGINEERING
LAND PLANNING • MAPPING • DEVELOPMENT

GRADING PLAN III
DROP INLETS # 6 & #7 PROFILE

DECATUR & TROPICAL
DECATUR 215, LLC

TITLE PROJECT CITY OF LAS VEGAS
WORK ORDER NO. 070619
DESIGN BY: KDS
DRAWN BY: KDS/WK
DATE: Mar 03, 2009
SCALE: 1" = 40'
SHEET 5 OF 45 SHEETS
CLV DWG NO. 107Y4968

16244