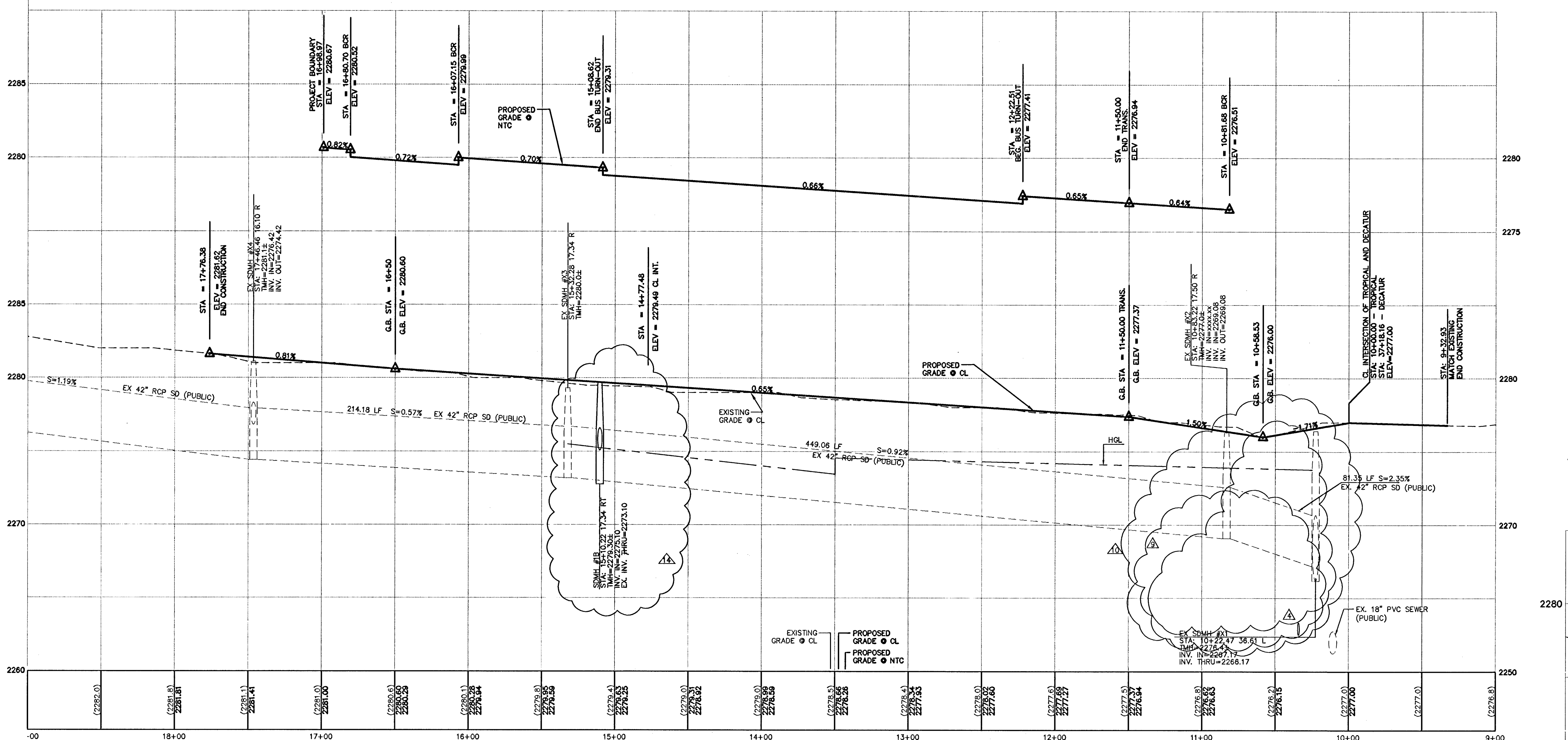
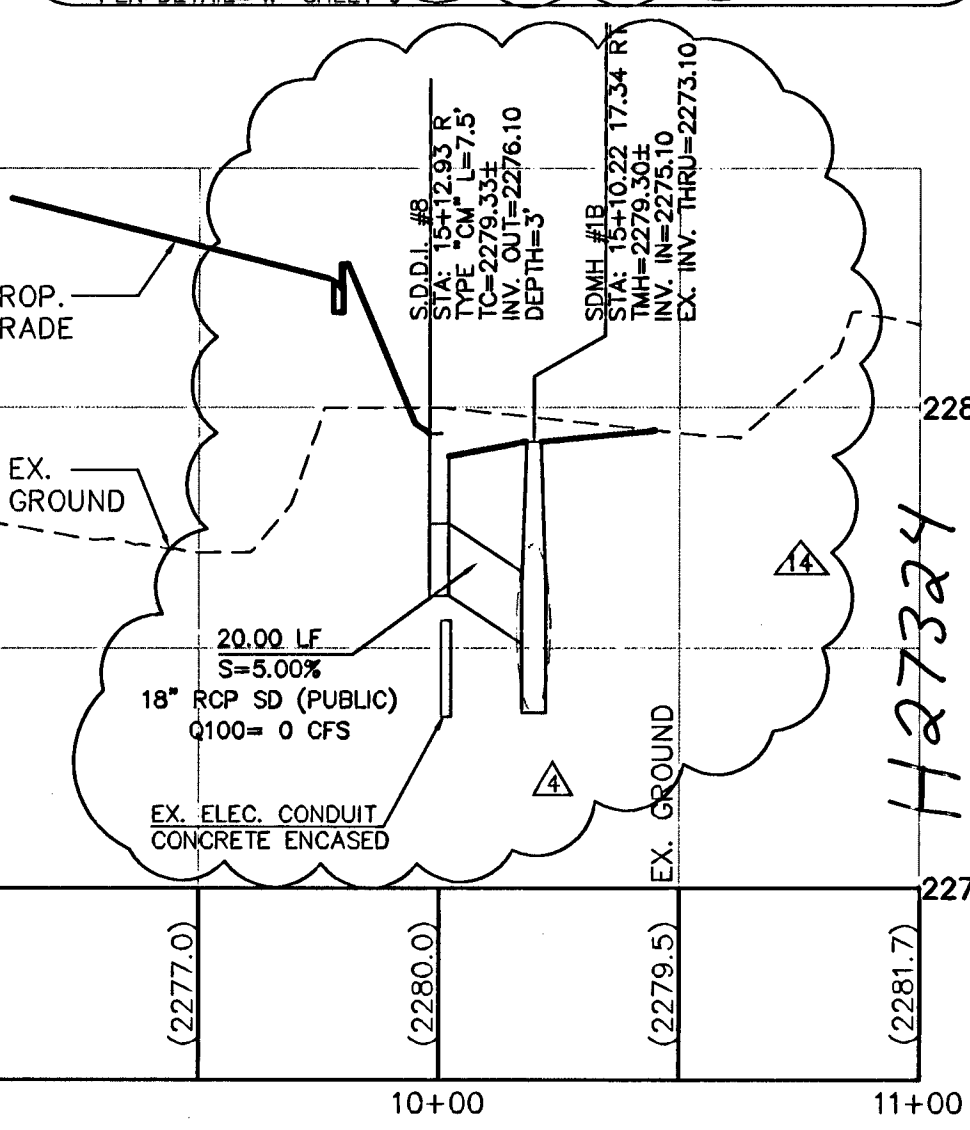


NO.	DATE	BY	APP'D.	REVISION DESCRIPTION
1	01/22/09	KEA		REVISE D.L. # 148-34409
2	01/22/09	KEA		REVISE SD & WATER
3	01/22/09	KEA		REVISE STORM DRAIN INVERTS/SURFS
4	01/22/09	KEA		REVISE STORM DRAIN INVERTS/SURFS
5	01/22/09	KEA		REVISE STORM DRAIN INVERTS/SURFS
6	01/22/09	KEA		REVISE STORM DRAIN INVERTS/SURFS
7	01/22/09	KEA		REVISE STORM DRAIN INVERTS/SURFS
8	01/22/09	KEA		REVISE STORM DRAIN INVERTS/SURFS
9	01/22/09	KEA		REVISE STORM DRAIN INVERTS/SURFS
10	01/22/09	KEA		REVISE STORM DRAIN INVERTS/SURFS
11	01/22/09	KEA		REVISE STORM DRAIN INVERTS/SURFS
12	01/22/09	KEA		REVISE STORM DRAIN INVERTS/SURFS
13	01/22/09	KEA		REVISE STORM DRAIN INVERTS/SURFS
14	01/22/09	KEA		REVISE STORM DRAIN INVERTS/SURFS
15	01/22/09	KEA		REVISE STORM DRAIN INVERTS/SURFS
16	01/22/09	KEA		REVISE STORM DRAIN INVERTS/SURFS
17	01/22/09	KEA		REVISE STORM DRAIN INVERTS/SURFS
18	01/22/09	KEA		REVISE STORM DRAIN INVERTS/SURFS
19	01/22/09	KEA		REVISE STORM DRAIN INVERTS/SURFS
20	01/22/09	KEA		REVISE STORM DRAIN INVERTS/SURFS

KEY ENGINEERING
 PROFESSIONAL ENGINEERING FIRM
 3610 North Rancho Drive
 Las Vegas, Nevada 89130
 Telephone: (702) 646-4146
 Fax: (702) 646-4146
 WWW.KEYENGINEERING.COM
KEY ENGINEERING
 SOUTHWEST
 LAND PLANNING • MAPPING • DEVELOPMENT



- CONSTRUCTION NOTES**
- CONSTRUCT 30" ROLL CURB AND GUTTER PER USDOCA DWG. NO. 217A
 - CONSTRUCT "L" CURB AND GUTTER PER USDOCA DWG. NO. 216
 - CONSTRUCT "A" TYPE CURB PER USDOCA DWG. NO. 219
 - CONSTRUCT 24" VALLEY GUTTER PER DETAIL "L" ON SHEET 8
 - CONSTRUCT 5" SIDEWALK PER USDOCA DWG. NO. 234
 - CONSTRUCT 8" CROSS GUTTER PER USDOCA DWG. NO. 228
 - CONSTRUCT CASE I SIDEWALK RAMP (A=8", B=8") PER USDOCA DWG. NO. 235
 - CONSTRUCT CASE II SIDEWALK RAMP (A=12", B=12") PER USDOCA DWG. NO. 235
 - CONSTRUCT MEDIAN ISLAND PER USDOCA DWG. NO. 218
 - INSTALL HANDICAP STRIPING AND SIGNS PER DETAIL "P" ON SHEET 9
 - CONSTRUCT 0" CURB PER DETAIL "N" ON SHEET 9
 - CONSTRUCT 60" TYPE I MANHOLE PER USDOCA DWG. NO. 403
 - CONSTRUCT 48" TYPE I MANHOLE PER USDOCA DWG. NO. 403
 - INSTALL 2" SIDEWALK UNDER DRAIN PER USDOCA DWG. NO. 236
 - CONSTRUCT 36" CONCRETE FLUME PER DETAIL "R" SHEET 9
 - CONSTRUCT 36"x36" JENSEN PRECAST CATCH BASIN DWG. NO. 363636 SEE DETAIL "V" SHEET 9 (TYPE II)
 - CONSTRUCT BUS TURNOUT AND BUS STOP LOADING PAD PER USDOCA DWG. NO. 234.1 - 234.2
 - CONSTRUCT CATCH BASIN PER DETAIL "LL" SHEET 10
 - CONSTRUCT TYPE "CM" DROP INLET L=5' PER DETAIL "W" SHEET 9 PER DETAIL "W" SHEET 9
 - INSTALL FIRE ACCESS GATE
 - ADJUST EX. MANHOLE RIM TO PROP. FINISHED GRADE AS NECESSARY
 - CONSTRUCT TYPE "CM" DROP INLET L=15', 6 GRATES PER DETAIL "W" SHEET 9
 - CONSTRUCT 5' MEANDERING SIDEWALK - SEE L/S ARCH. PLAN FOR LOCATION
 - VERT. RELOCATE EX. FENCE TO PROPOSED GRADES
 - CONSTRUCT 60" TYPE III MANHOLE PER USDOCA DWG. NO. 403
 - CONSTRUCT 48" TYPE II MANHOLE PER USDOCA DWG. NO. 403
 - INSTALL 3" STD. TYPE "A" DROP INLET PER USDOCA DWG. NO. 171
 - CONSTRUCT TYPE II MANHOLE PER DETAIL ON SHEET 17
 - CONSTRUCT TYPE "CM" DROP INLET L=5', 6 GRATES PER DETAIL "W" SHEET 9



PROFILE
TROPICAL PARKWAY
 STA: 10+00.00 TO STA: 19+00.00
PUBLIC STREET
 SCALE: HORIZONTAL = 1" = 40'
 VERTICAL = 1" = 4'

FLOOD ZONE
 FLOOD ZONE DESIGNATION "X" PER F.E.M.A. FLOOD INSURANCE RATE MAP, COMMUNITY PANEL NUMBER 32003C1765 D, AUGUST 16, 1995.

NOTE
 SEE SHEETS 25-27 FOR WATER AND SEWER PROFILE

NOTE
 SEE SHEET 18 FOR DROP INLET #9

BENCHMARK
 CITY OF LAS VEGAS VERTICAL CONTROL RIVET AND PLATE IN TOP OF CURB NW CORNER OF TROPICAL PARKWAY & THOM BOULEVARD
 STATION 8L90
 256
 ELEVATION= 697.5653 METERS (NAV88)
 2288.60 FEET

STREET PLAN AND PROFILE III
 TROPICAL PARKWAY - STA: 10+00.00 TO STA 19+00.00
DECATUR & TROPICAL
 DECATUR 215, LLC
 CITY OF LAS VEGAS
 PROJECT
 WORK ORDER NO: 070619
 DESIGN BY: KDS
 DRAWN BY: KDS/WK
 DATE: Mar 03, 2009
 SCALE: 1" = 40'
 SHEET 13 OF 45 SHEETS
 CLV DWG NO. 107Y4968

NOTICE TO CONTRACTOR!
 AVOID CUTTING UNDERGROUND UTILITIES. IT'S COSTLY.
 AVOID HITTING OVERHEAD POWER LINES. IT'S COSTLY.
CALL before you Dig
 1-800-227-2600
 UNDERGROUND SERVICE (USA)
 CALL BEFORE YOU DIG OVERHEAD
 CALL 1-702-227-2923