

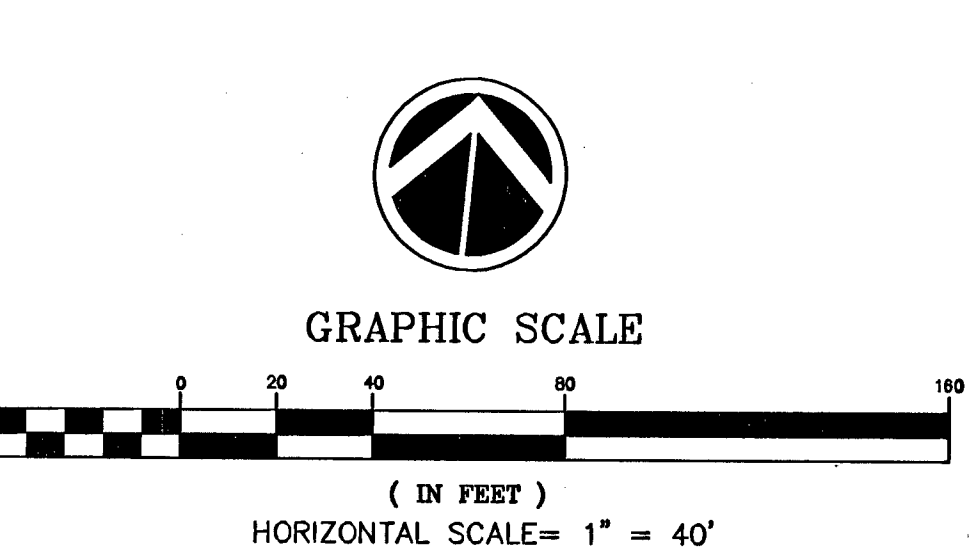
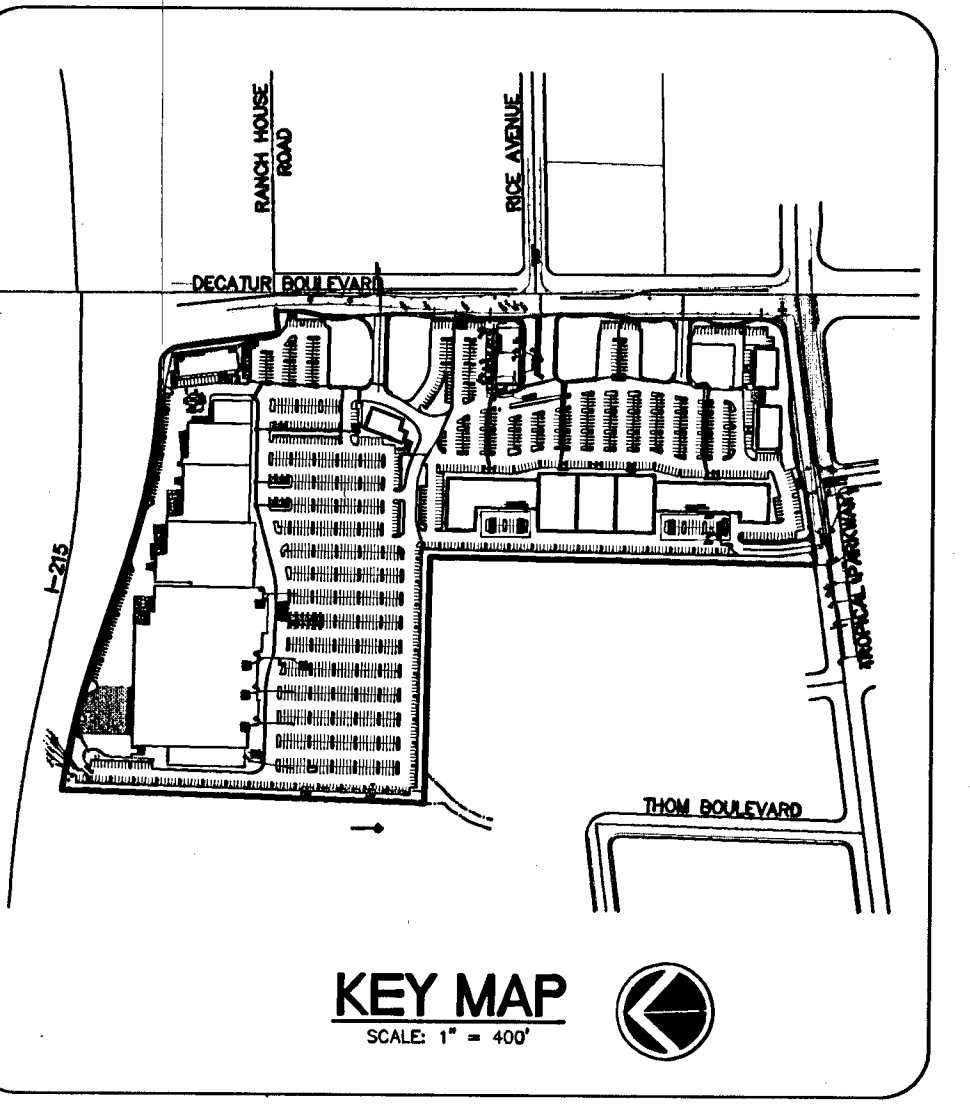
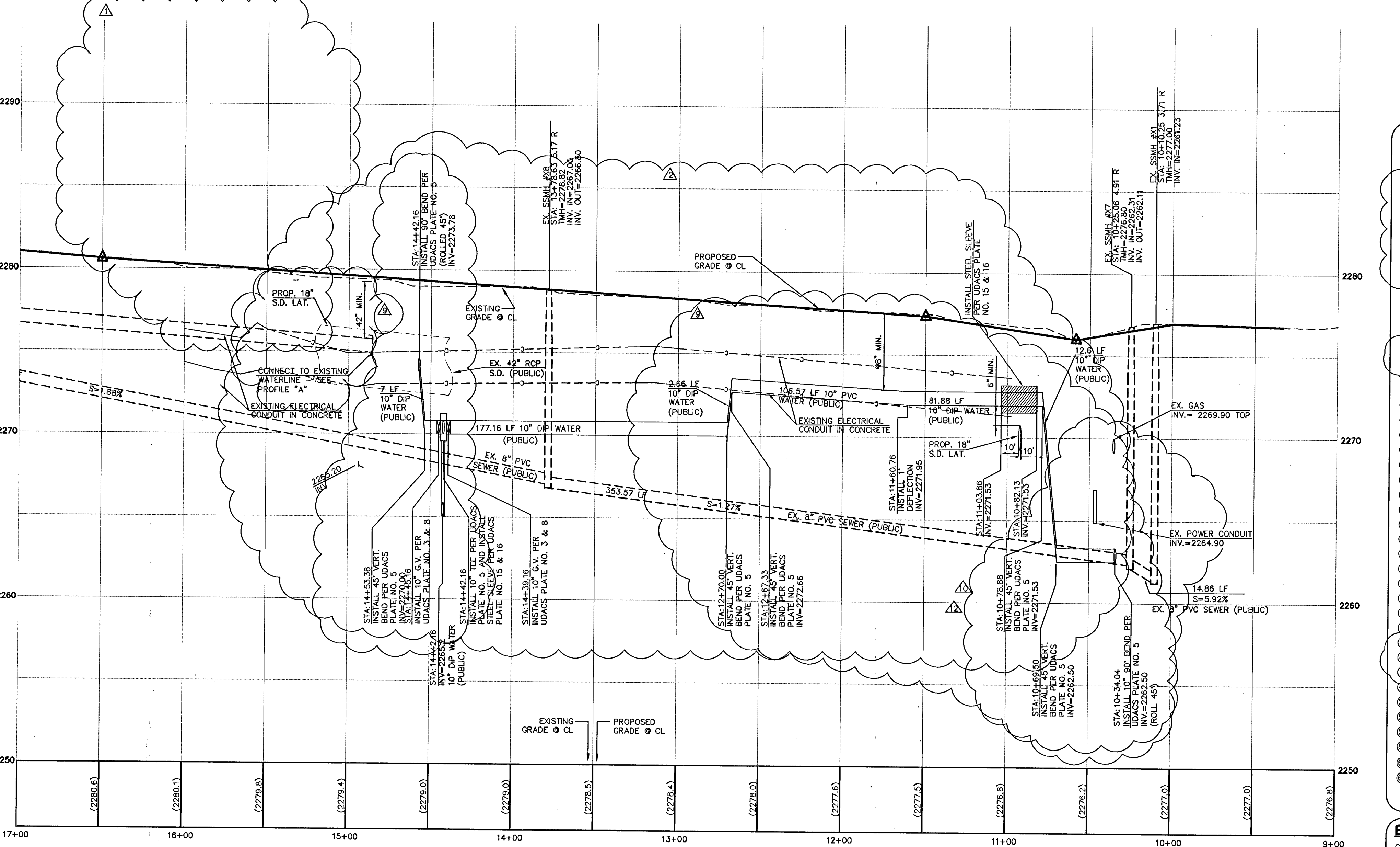
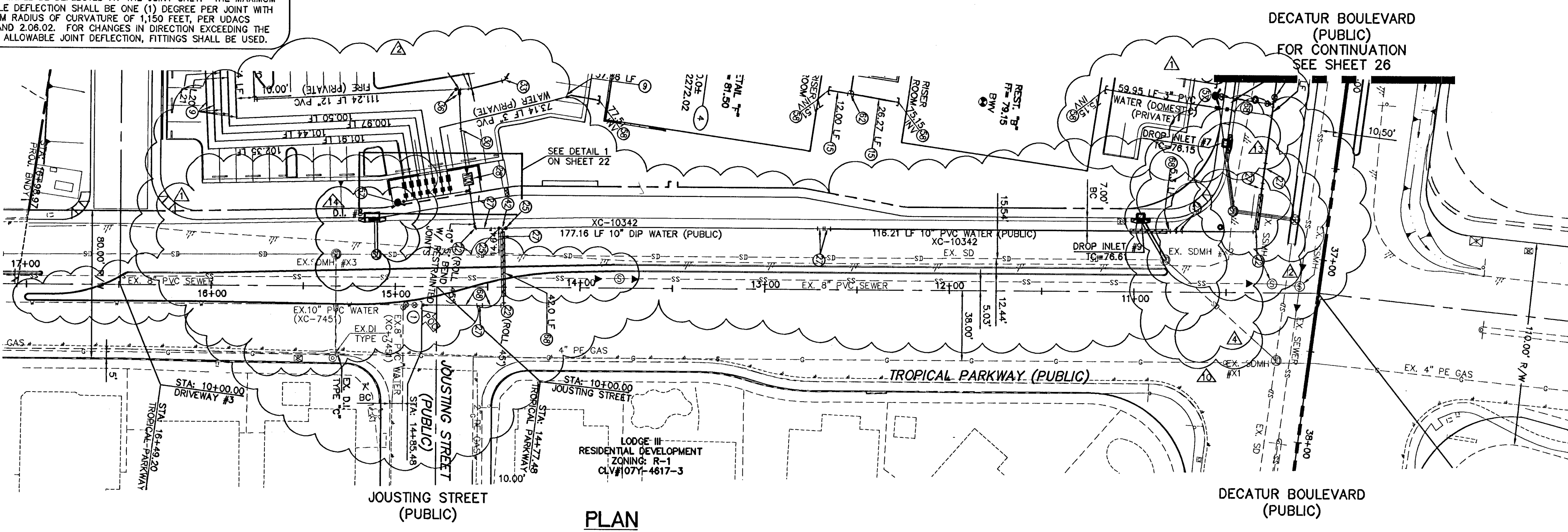
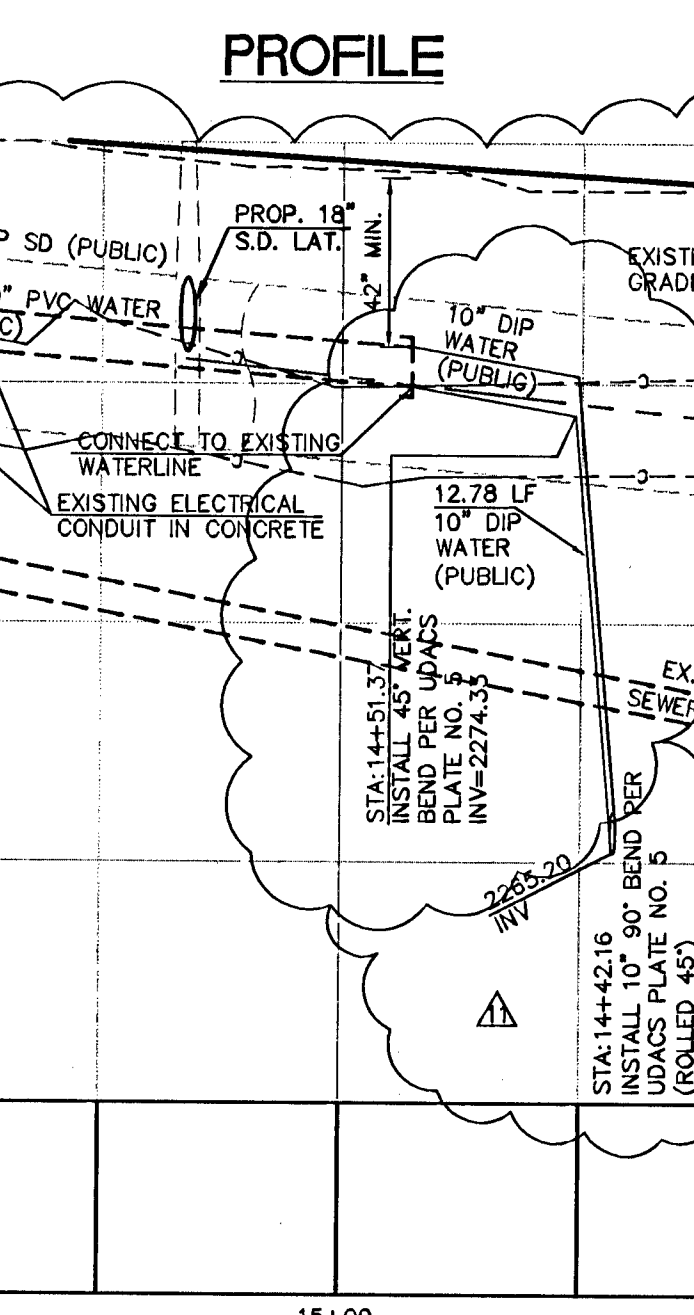
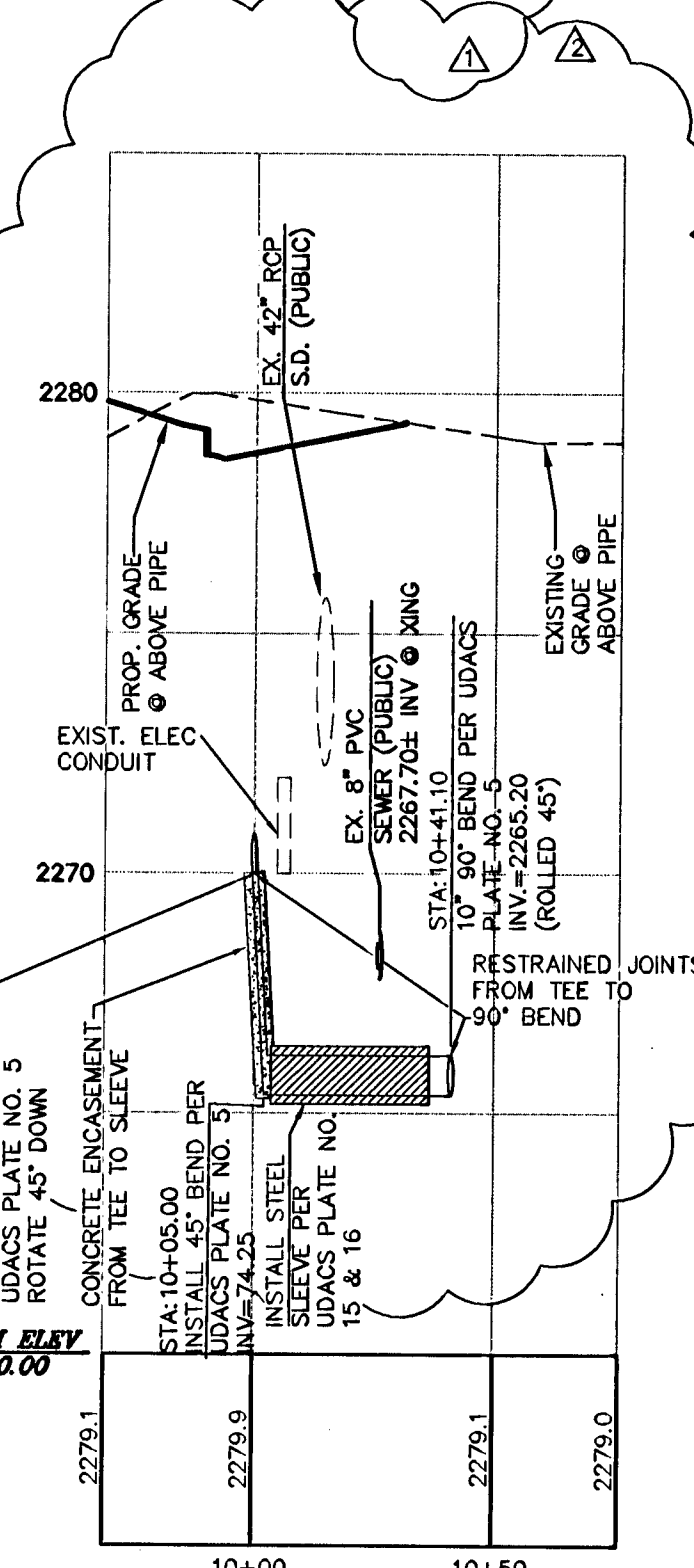
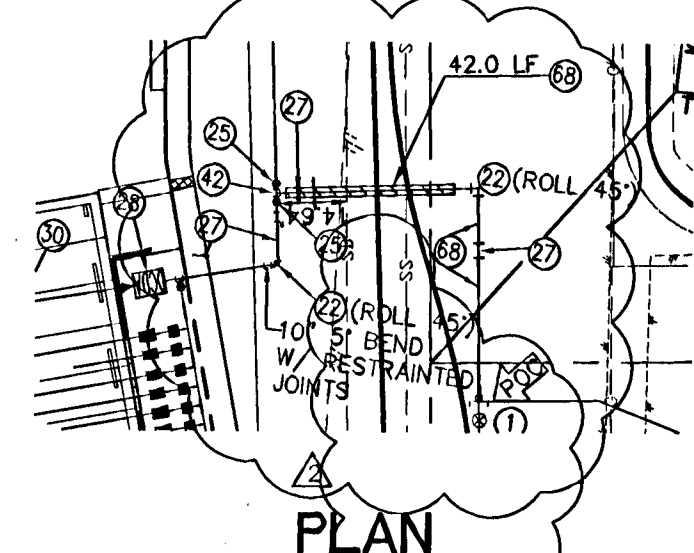
STEEL CASING NOTES

INSTALL WATERLINE IN STEEL CASING PER UDACS PLATES NO. 15 AND 16. MINIMUM 18-INCH CLEARANCE IS REQUIRED ABOVE THE TOP OF THE CASING. FROM THE UPPER BENDS THROUGHOUT THE LOWER SECTION OF PIPE, DUCTILE IRON PIPE WITH RESTRAINED JOINTS IS REQUIRED. IN ADDITION, THRUST BLOCKS ARE TO BE INSTALLED AT THE UPPER BENDS.

ANNUAL SPACE BETWEEN PIPE AND CASING SHALL BE FILLED WITH CLASS I CLSM. SEE UDACS PLATES 6A, 6B, 6C, 6D, 6E FOR BEDDING AND BACKFILL REQUIREMENTS.

WATER MAIN JOINT DEFLECTION (PVC. 4'-24')

PVC PIPE SHALL BE DEFLECTED AT THE JOINT ONLY. THE MAXIMUM ALLOWABLE DEFLECTION SHALL BE ONE (1) DEGREE PER JOINT WITH A MINIMUM RADIUS OF CURVATURE OF 1,150 FEET. PER UDACS 2.08.01 AND 2.08.02. FOR CHANGES IN DIRECTION EXCEEDING THE MAXIMUM ALLOWABLE JOINT DEFLECTION, FITTINGS SHALL BE USED.



WATER CONSTRUCTION NOTES

1. POINT OF CONNECTION: REMOVE CAP AND BLOW OFF PER UDACS PLATE NO. 4A, NOTE NO. 1, AND CONNECT TO EXISTING 10" SD WATER (SEE NOTE 1)
2. INSTALL 1" COPPER WATERLINE (PUBLIC)
3. INSTALL 1" METER AND 1" R.P.P.A. (IRRIGATION) (BRASS PIPING BETWEEN METER AND R.P.P.A.) PER UDACS PLATE NO. 1D & 11A
4. INSTALL 1-1/2" METER AND 1-1/2" R.P.P.A. (BRASS PIPING BETWEEN METER AND R.P.P.A.) PER UDACS PLATE NO. 1D & 11A
5. INSTALL 2" METER AND 2" R.P.P.A. (BRASS PIPING BETWEEN METER AND R.P.P.A.) PER UDACS PLATE NO. 1D & 11A
6. INSTALL 1-1/2" PVC WATERLINE (PUBLIC)
7. INSTALL 2" PVC WATERLINE (PUBLIC)
8. INSTALL 3" PVC WATERLINE (DOMESTIC) (PRIVATE)
9. POINT OF CONNECTION: INSTALL 12" X 12" MJ OR APPROVED EQUAL TAPPING SLEEVE W/ TAPPING VALVE PER UDACS PLATE NO. 22 & 8
10. INSTALL 6" 90° BEND PER UDACS PLATE NO. 5
11. INSTALL 6" X 1-1/2" SERVICE SADDLE PER UDACS PLATE NO. 1D
12. INSTALL 6" X 1" SERVICE SADDLE PER UDACS PLATE NO. 1D
13. INSTALL 6" 45° BEND PER UDACS PLATE NO. 5
14. INSTALL 6" PVC FIRE (PRIVATE) (FIRE)
15. INSTALL 12" X 10" REDUCER PER UDACS PLATE NO. 3
16. INSTALL 10" 90° BEND PER UDACS PLATE NO. 5
17. INSTALL 8" X 6" REDUCER PER UDACS PLATE NO. 3
18. INSTALL 10" PVC WATERLINE (PUBLIC)
19. INSTALL 10" GATE VALVE PER UDACS PLATE NO. 3 & 8
20. INSTALL 10" X 6" REDUCER PER UDACS PLATE NO. 3
21. INSTALL 10" 45° BEND PER UDACS PLATE NO. 5
22. INSTALL 10" D.C.D.A. PER UDACS PLATE NO. 11C
23. INSTALL 12" PVC WATERLINE (FIRE) (PRIVATE)
24. INSTALL 12" 22.5° BEND PER UDACS PLATE NO. 5
25. INSTALL 12" 45° BEND PER UDACS PLATE NO. 5
26. INSTALL 12" 90° BEND PER UDACS PLATE NO. 5
27. INSTALL 12" TEE PER UDACS PLATE NO. 5
28. INSTALL 12" GATE VALVE PER UDACS PLATE NO. 3 & 8
29. INSTALL 12" X 6" REDUCER PER UDACS PLATE NO. 3
30. INSTALL 12" X 6" TEE PER UDACS PLATE NO. 5
31. INSTALL 6" X 2" SERVICE SADDLE PER UDACS PLATE NO. 1D
32. INSTALL 10" X 1-1/2" SERVICE SADDLE PER UDACS PLATE NO. 1D
33. INSTALL 10" X 2" SERVICE SADDLE PER UDACS PLATE NO. 1D
34. INSTALL 10" X 10" TEE PER UDACS PLATE NO. 5 ROTATE 45° DOWN
35. INSTALL STD. FIRE HYD. W/ ASSY. PER UDACS PLATE NO. 7
36. STUB AND CAP WATER PER UDACS PLATE NO. 4A
37. INSTALL 6" CAP W/ 2" BLOW OFF ASSY. PER UDACS PLATE NO. 4A
38. INSTALL 6" X 6" TEE PER UDACS PLATE NO. 5
39. INSTALL 6" DIP WATERLINE (PUBLIC)
40. INSTALL 10" DIP WATERLINE (PUBLIC)

BENCHMARK
CITY OF LAS VEGAS VERTICAL CONTROL RIVET AND PLATE IN TOP OF CURB NW CORNER OF TROPICAL PARKWAY & THOM BOULEVARD

STATION: 8LV90
ELEVATION: 2566
ELEVATION = 697.5653 METERS (NAVD88)
2288.60 FEET

APPROVAL FOR CONSTRUCTION
1ST. APPROVED 6-16-08

CITY OF LAS VEGAS DISTRICT
PROJECT # 115171
DATE 3-03-09
SHEETS: 1, 2, 9, 19-22, 24-27, 33, 34, 41

NOTICE TO CONTRACTOR!
EXISTING UTILITY LOCATIONS SHOWN HEREON ARE APPROXIMATE ONLY. IT SHALL BE THE CONTRACTOR'S RESPONSIBILITY TO DETERMINE THE EXACT VERTICAL AND HORIZONTAL LOCATION OF ALL EXISTING UNDERGROUND UTILITIES PRIOR TO COMMENCING CONSTRUCTION. NO REPRESENTATION IS MADE THAT ALL EXISTING UTILITIES ARE SHOWN HEREON. THE ENGINEER ASSUMES NO RESPONSIBILITY FOR UTILITIES NOT SHOWN OR UTILITIES NOT SHOWN IN THEIR PROPER LOCATION.

CALL before you Dig
1-800-227-2600
UNDERGROUND SERVICE (USA)

AVOID HITTING OVERHEAD POWER LINES. IT'S COSTLY.
CALL BEFORE YOU DIG
1-702-227-2929

PROFILE TROPICAL PARKWAY
STA: 10+00.00 TO STA: 19+00.00
PUBLIC STREET
SCALE: HORIZONTAL = 1" = 40'
VERTICAL = 1" = 4'

NOTE
ALL ABOVE GROUND UTILITY APPURTENANCES SHALL CONFORM TO THE REQUIREMENTS OF TITLE 19.12.040.

BASIS OF BEARING
NORTH 02°10'35" EAST BEING THE CENTERLINE OF DECATUR BLVD. BETWEEN TROPICAL PARKWAY AND CENTENNIAL PARKWAY IN THE NORTHWEST QUARTER (NW 1/4) OF SECTION 30, TOWNSHIP 19 SOUTH, RANGE 61 EAST, M.D.M., CLARK COUNTY, NEVADA, AS SHOWN BY MAP IN THE OFFICE OF THE CLARK COUNTY, NEVADA RECORDER IN FILE 90 OF PARCEL MAPS PAGE 69.

UTILITY PLAN AND PROFILE III
TROPICAL PARKWAY - STA: 10+00.00 TO STA 19+00.00

DECATUR & TROPICAL
DECATUR 215, LLC

CITY OF LAS VEGAS
PROJECT # 115171
WORK ORDER NO: 070619
DESIGN BY: KDS
DRAWN BY: KDS/WK
DATE: Mar 03, 2009
SCALE: 1" = 40'
SHEET 27 OF 45 SHEETS
CLV DWG NO: 1074968