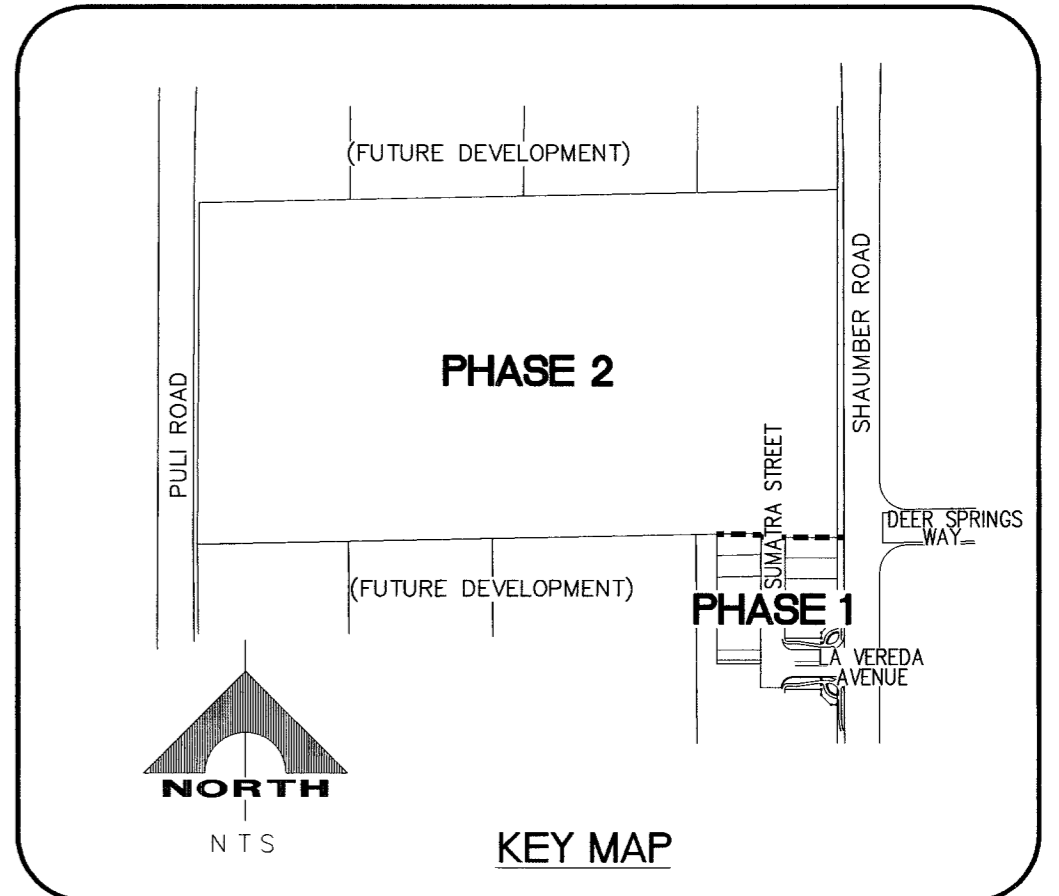
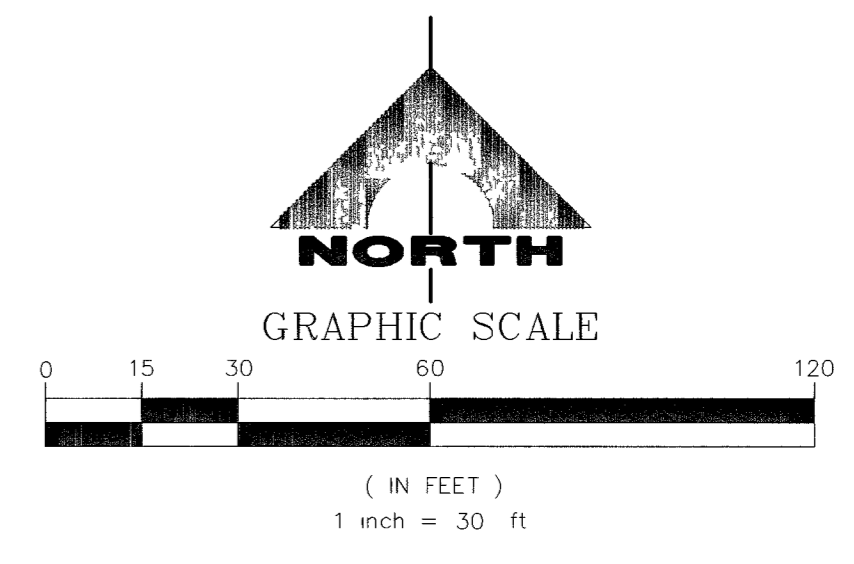
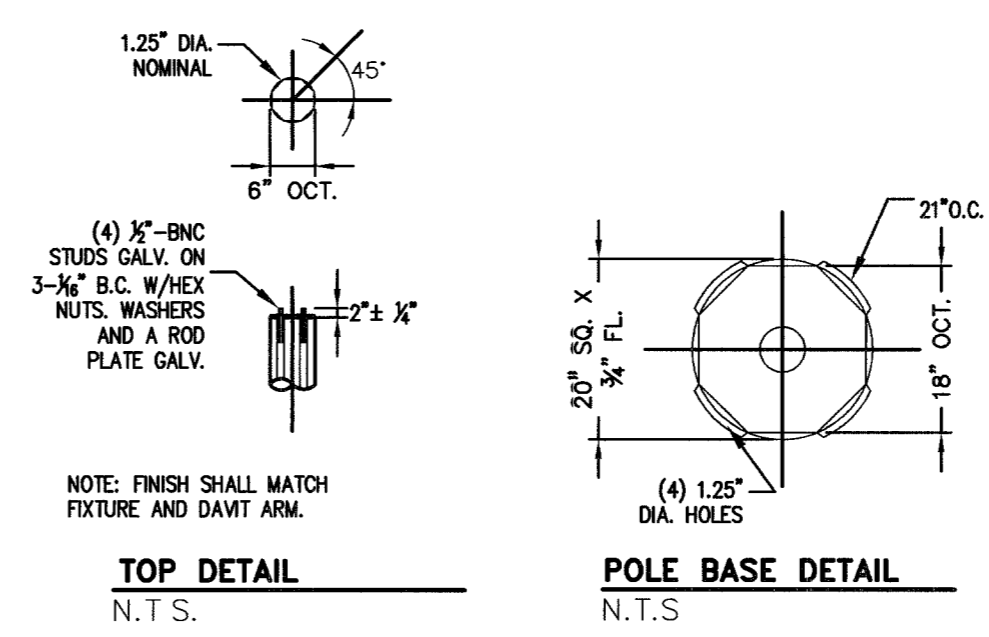


**STREETLIGHT POLE DIAGRAM
SINGLE ARM AND FOUNDATION**
N.T.S. - DETAIL FOUNDATION DESIGN PROVIDED BY CITY OF LAS VEGAS FROM PRIOR APPROVED CLV FOURTH (4TH) STREET PLANS FOR SAME STREET LIGHT.

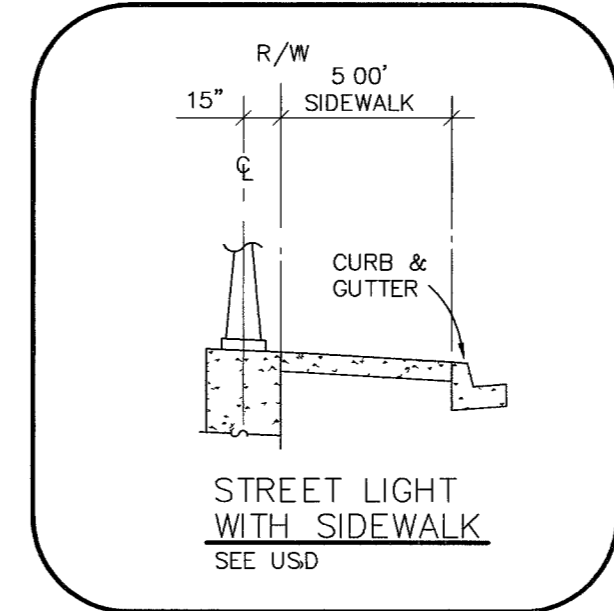


LEGEND

- FIRE HYDRANT
- 3 1/2 PULL BOX
- 1-1/4" STREET LIGHT CONDUIT 2#4, 1#8 GND
- 100W HPS LUMINAIRE POLE SHALL BE A 23" OCTAGONAL POLE WITH A SINGLE 8" ARM, AMERON 6B1-26 OR EQUAL
- 150W HPS LUMINAIRE POLE SHALL BE A 23" OCTAGONAL POLE WITH A SINGLE 8" ARM, AMERON 6B1-26 OR EQUAL
- 250W HPS LUMINAIRE POLE SHALL BE A 23" OCTAGONAL POLE WITH A SINGLE 8" ARM, AMERON 6B1-26 OR EQUAL
- S.P.O.C. (200A PAD MTD SERVICE PEDESTAL)
- BLOCK NUMBER
- 9" STREET NAME SIGN PER STD DWG 250
- 30" STOP SIGN, R1-1
- 12" STREET NAME SIGN PER STD DWG 250
- 36" STOP SIGN, R1-1
- RESIDENTIAL DRIVEWAY PER STD DWG 223

SVZ TABLE

LINE	LENGTH	BEARING
L1	44.18	S05°10'30"E
L2	8.70	S44°58'50"E
L3	45.11	S83°48'27"E
L4	24.76	N83°56'49"E
L5	24.13	N45°01'10"E
L6	154.41	N01°59'40"E
L7	5.49	N46°12'34"E
L8	39.16	N82°55'38"E
L9	24.76	S81°02'12"E
L10	24.47	S44°58'50"E
L11	154.41	S01°24'32"E



BENCHMARK

BM #	DESC.	ELEV. DATUM (FEET)	ELEV. DATUM (METERS)
BLV99 13E4	CITY OF LAS VEGAS RIVET AND PLATE IN CONCRETE CYLINDER AT THE NW CORNER OF HUALAPAI WAY AND FARM ROAD.	2860.79	871.971

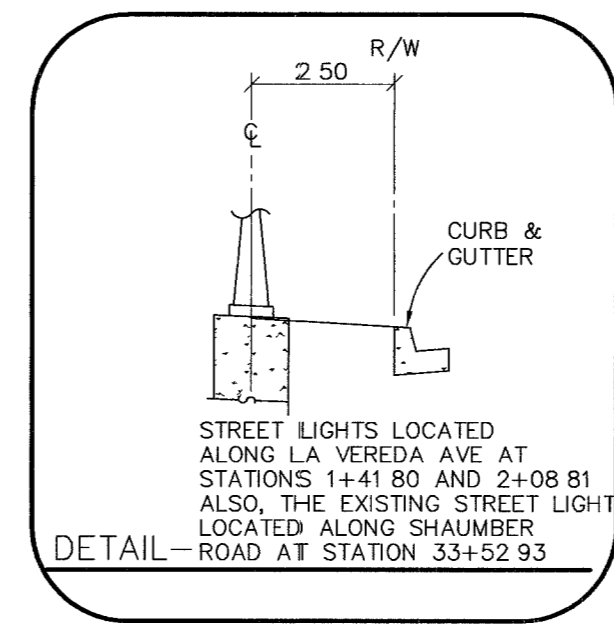
BASIS OF BEARINGS
NORTH 88°51'58" EAST BEING THE BEARING OF THE SOUTH LINE OF THE SOUTHWEST QUARTER (SW 1/4) OF THE NORTHWEST QUARTER (NW 1/4) OF SECTION 24, TOWNSHIP 19 SOUTH, RANGE 59 EAST, M.D.M., CITY OF LAS VEGAS, CLARK COUNTY, NEVADA, AS SHOWN BY MAP THEREOF ON FILE IN BOOK 124, PAGE 94 OF SURVEYS IN THE CLARK COUNTY RECORDER'S OFFICE, CLARK COUNTY, NEVADA.

ELECTRICAL FIXTURE SCHEDULE

TYPE	DESCRIPTION	LAMPS	WATTS	MANUFACTURER	BALLAST	REMARKS
1	AREA LUMINAIRE, POLE MOUNTED IES TYPE III DISTRIBUTION, 240V HIGH POWER FACTOR BALLAST	100W HPS	120W	GARDCO, ROUND FORM 10 CA22-1-3-100HPS-240-BL	HIGH POWER FACTOR	LARGE "T" INTERSECTION GATED "T" INTERSECTION CULDESAC, KNUCKLE LIGHTING
2	AREA LUMINAIRE, POLE MOUNTED IES TYPE III DISTRIBUTION, 240V HIGH POWER FACTOR BALLAST	150W HPS	180W	GARDCO, ROUND FORM 10 CA22-1-3-150HPS-240-BL OR KIM LIGHTING CURVILINEAR CC SERIES CAT NO. CC17X2/150HPS240	HIGH POWER FACTOR	LARGE "T" INTERSECTION GATED "T" INTERSECTION CULDESAC, KNUCKLE LIGHTING
3	AREA LUMINAIRE, POLE MOUNTED IES TYPE III DISTRIBUTION, 240V HIGH POWER FACTOR BALLAST	250W HPS	300W	GARDCO, ROUND FORM 10 CA22-1-3-250HPS-240-BL OR KIM LIGHTING CURVILINEAR CC SERIES CAT NO. CC17X2/250HPS240	HIGH POWER FACTOR	LARGE "T" INTERSECTION GATED "T" INTERSECTION CULDESAC, KNUCKLE LIGHTING

CONTRACTOR NOTE:
EXISTING UTILITY LOCATIONS SHOWN HEREIN ARE APPROXIMATE ONLY. IT SHALL BE THE CONTRACTOR'S RESPONSIBILITY TO DETERMINE THE EXACT VERTICAL AND HORIZONTAL LOCATION OF ALL EXISTING UNDERGROUND UTILITIES PRIOR TO COMMENCING CONSTRUCTION. NO REPRESENTATION IS MADE THAT ALL EXISTING UTILITIES ARE SHOWN HEREON. THE ENGINEER ASSUMES NO RESPONSIBILITY FOR UTILITIES NOT SHOWN OR UTILITIES NOT SHOWN IN THEIR PROPER LOCATIONS CALL BEFORE YOU DIG: 1 (800) 227-2600

- SHEET NOTES**
- NOT USED
 - 1-1/4" C, 2#4, 1#8
 - NOT USED
 - 1-1/4" CONDUIT ONLY WITH NYLON PULLSTRING AND 1#8 PULL WIRE FOR LOCATING PURPOSES
 - STUBOUT AND CAP CONDUIT 5' PAST EDGE OF CONSTRUCTION
 - NO 3-1/2" PULLBOX PER USD 326



DESIGN: [] DRAWN: [] CHECK: [] ISSUE DATE: [] PLOT DATE: 01-09-08
 REV. DATE: [] REV. DATE: [] REV. DATE: [] REV. DATE: []
 DESCRIPTION: []
 G. C. WALLACE, INC.
 Engineers/Planners/Surveyors
 1555 SOUTH RAINBOW BLVD./LAS VEGAS, NEVADA 89146
 TELEPHONE (702) 804-2000 • FAX (702) 804-2299
 G:\Y84-094-003\Draw\Urban\094-003-SLI.dwg
 PULTE HOMES OF NEVADA
 EASTON PLACE AT PROVIDENCE - PHASE 1
 TRAFFIC AND STREET LIGHT PLAN
 DRAWING: SL-1
 3 OF 14 SHEETS

88335

CLV# 107Y4911-1