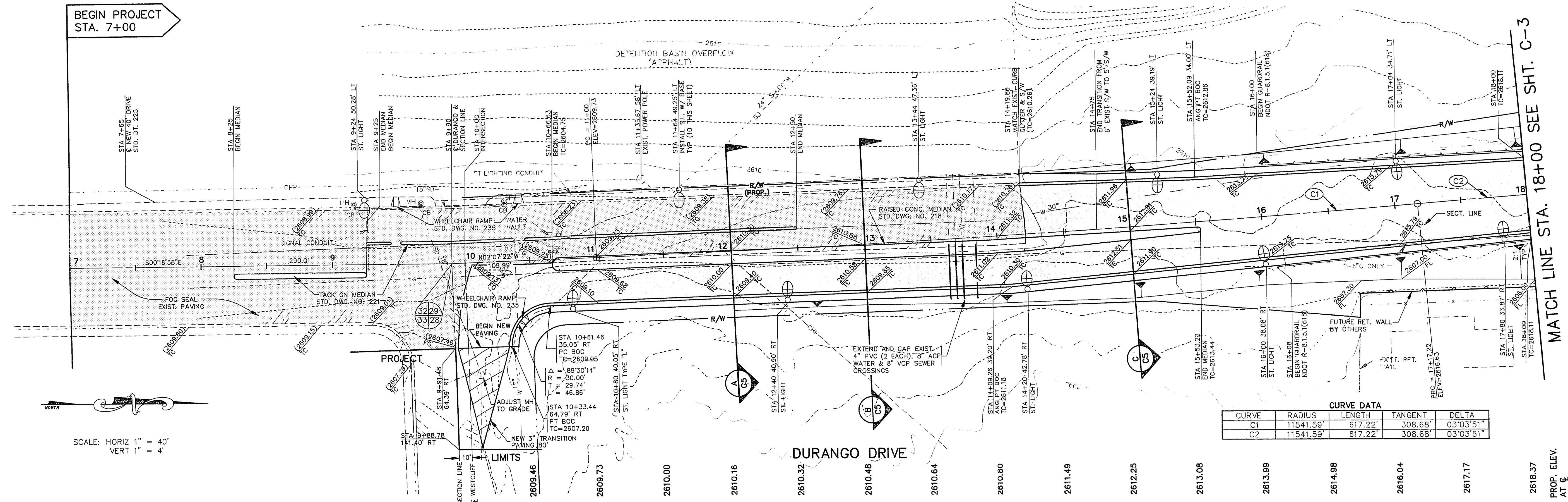


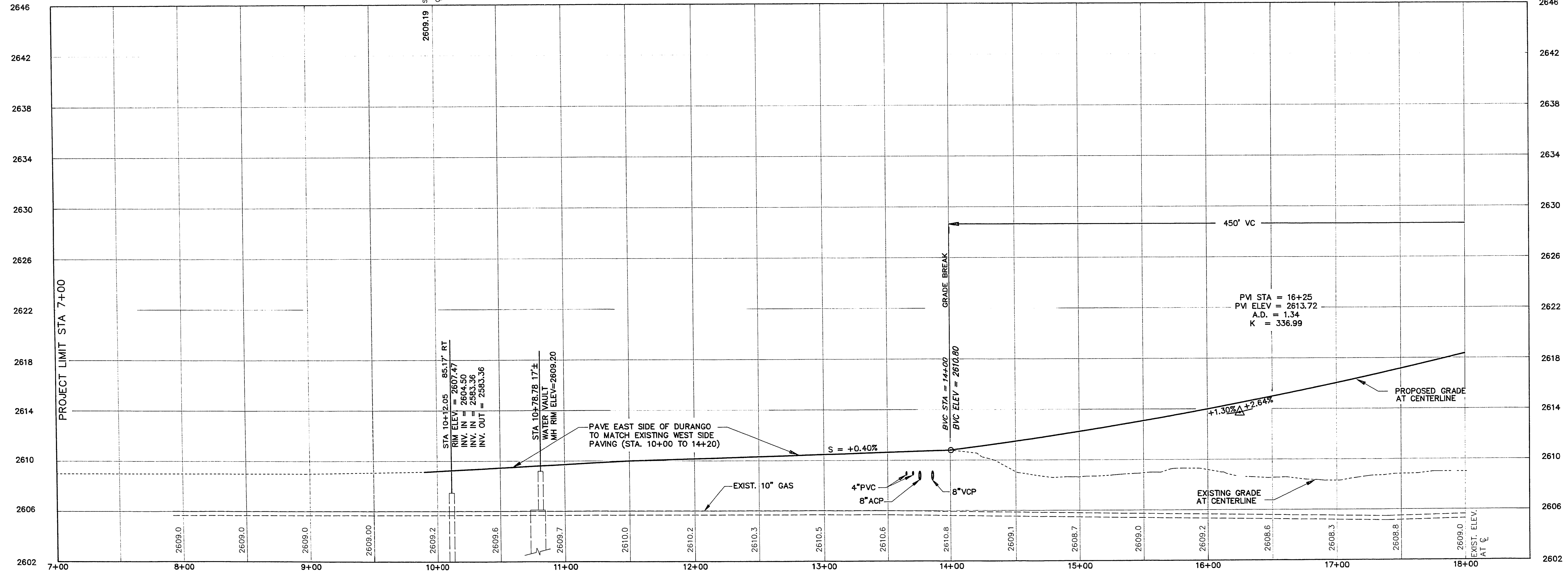
BEGIN PROJECT
STA. 7+00

MATCH LINE STA. 18+00 SEE SHT. C-3



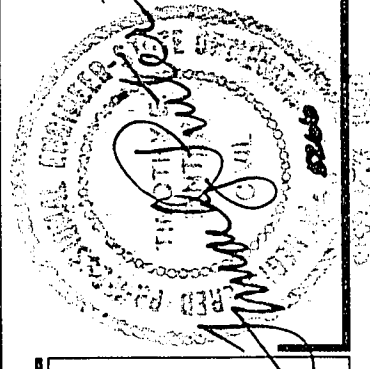
| CURVE | RADIUS | LENGTH | TANGENT | DELTA |
|-------|-----------|---------|---------|-----------|
| C1 | 11541.59' | 617.22' | 308.68' | 03°03'51" |
| C2 | 11541.59' | 617.22' | 308.68' | 03°03'51" |

SCALE: HORIZ 1" = 40'
VERT 1" = 4'



STA. 7+00 to STA. 18+00

GB&L CONSULTING ENGINEERS
 3650 S. EASTERN AVE. • SUITE 220 • LAS VEGAS, NEVADA 89109
 PLANNERS
POGEMEYER DESIGN GROUP
 ENGINEERS
 1140 ALMOND TREE LANE, SUITE 306 LAS VEGAS, NEVADA 89104 (702) 735-5108



PLAN AND PROFILE
DURANGO OVERPASS
 at SUMMERLIN PARKWAY
 and DURANGO DRIVE ROADWAY BETWEEN WESTCLIFF AND WASHINGTON
 CITY of LAS VEGAS, NEVADA

SHEET NUMBER 3
QIN
 of 20

| REV | DATE | DESCRIPTION |
|--------------------------------------------------------------|----------------------------------------------|-----------------------------|
| 89136 <td>9/25/90 <td>100% FINAL DESIGN SUBMITTAL</td> </td> | 9/25/90 <td>100% FINAL DESIGN SUBMITTAL</td> | 100% FINAL DESIGN SUBMITTAL |
| PLC <td></td> <td>DESIGNED BY</td> | | DESIGNED BY |
| PHL <td></td> <td>DRAWN BY</td> | | DRAWN BY |
| TEP <td></td> <td>CHECKED BY</td> | | CHECKED BY |
| | 9/25/90 | DATE |