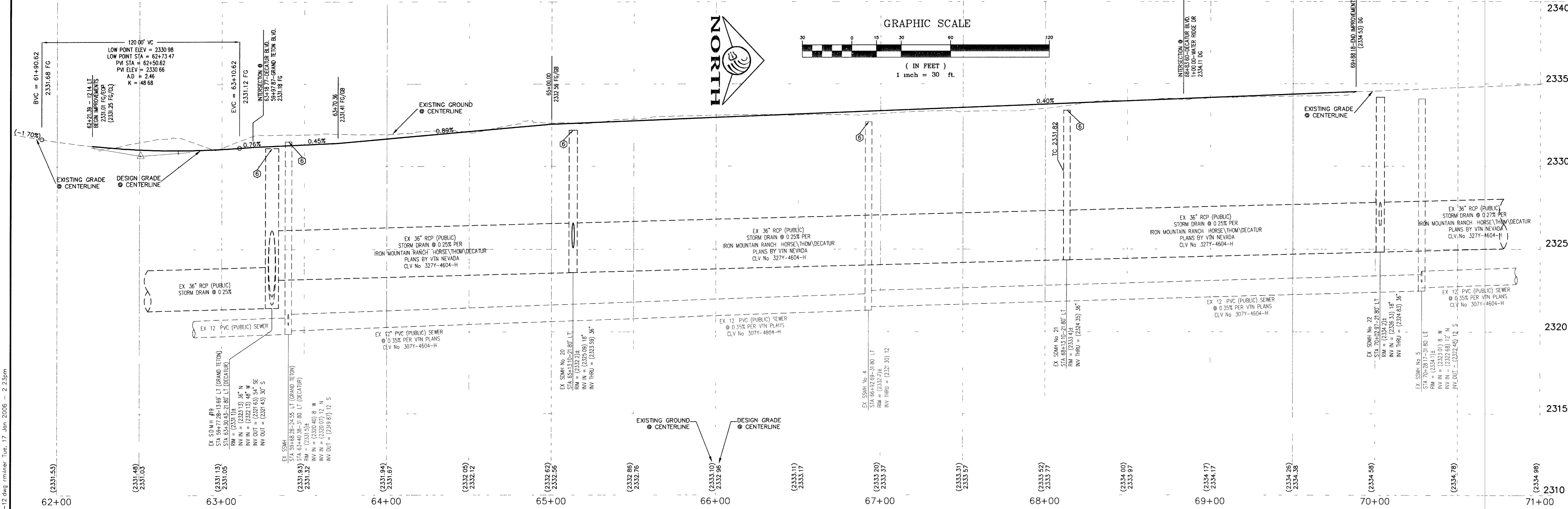
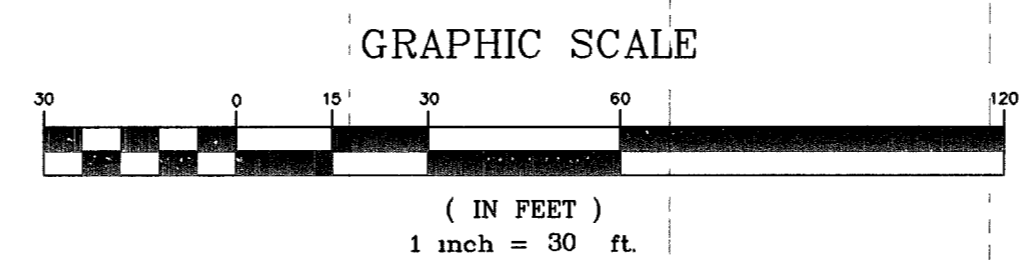
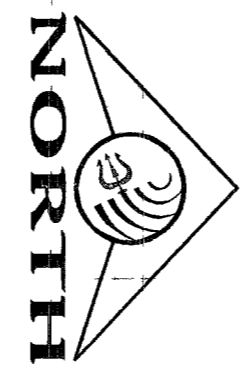


DECATUR BOULEVARD (PUBLIC)



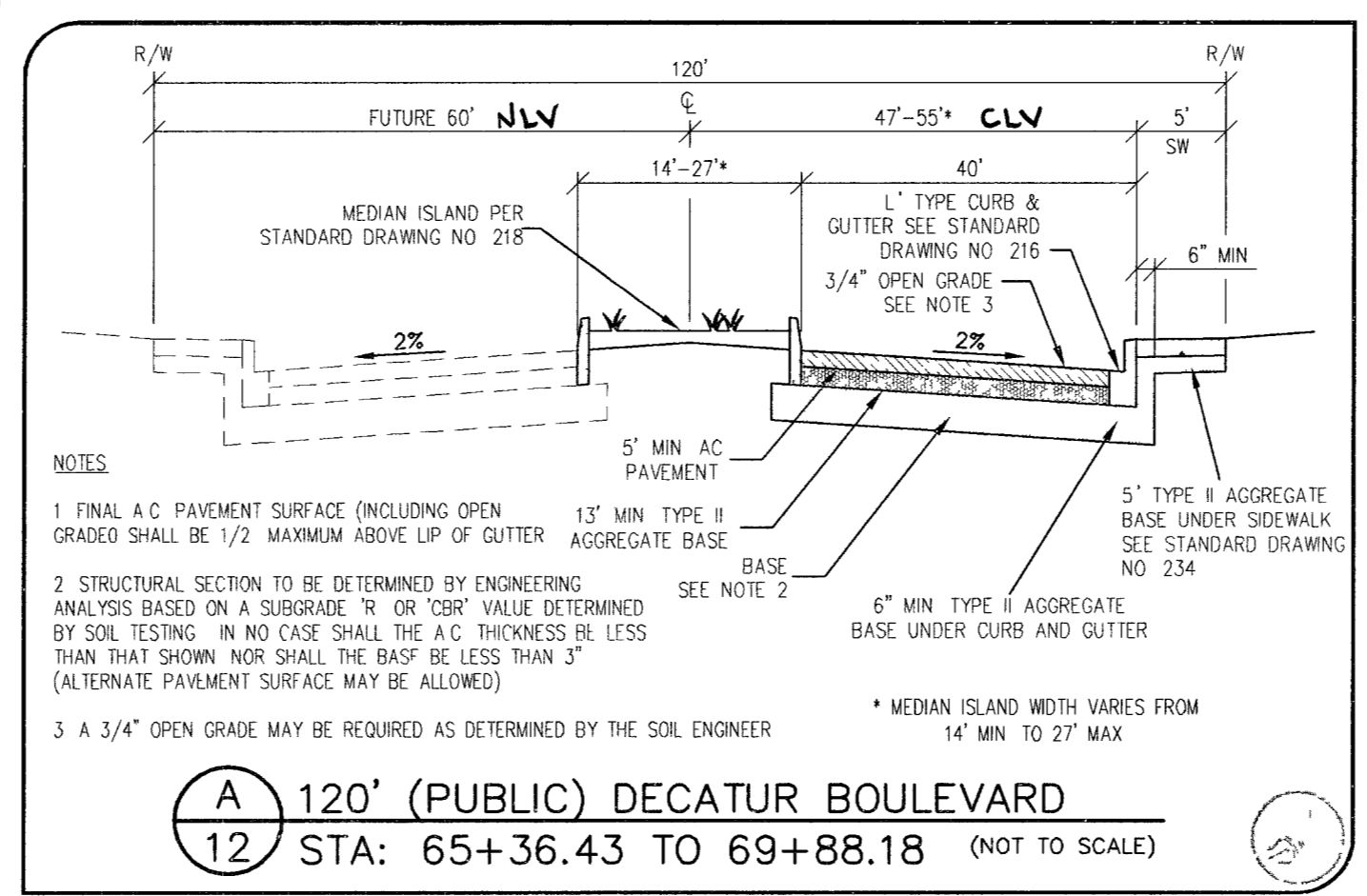
DECATUR BOULEVARD (PUBLIC)

PROFILE

SCALE: HORIZ. 1" = 30'
VERT. 1" = 3'

CONSTRUCTION NOTES

- CONSTRUCT "L" TYPE CURB & GUTTER PER STANDARD DWG NO. 216
- CONSTRUCT VALLEY GUTTER PER STANDARD DWG NO. 228
- CONSTRUCT HANDICAP RAMP PER STANDARD DWG NO. 235 CASE I - SEE SW RAMP TRANSITION TABLE
- CONSTRUCT SIDEWALK PER STANDARD DWG 214
- EXISTING DROP INLET TO BE REMOVED
- ADJUST EXISTING MANHOLE TO GRADE WHERE NECESSARY
- EXISTING MANHOLE TO BE PATCHED AS NECESSARY AFTER STORM DRAIN REMOVAL.



NOTES
ALL PRIVATE STREETS ARE PUBLIC DRAINAGE, EASEMENTS TO BE PRIVATELY MAINTAINED, CITY OF LAS VEGAS SEWER EASEMENT, AND P U E

BASIS OF BEARING
NORTH 00°00'19" WEST, BEING THE BEARING OF THE EAST LINE OF THE SOUTHEAST QUARTER (SE 1/4) OF THE SOUTHEAST QUARTER (SE 1/4) OF SECTION 12, TOWNSHIP 19 SOUTH, RANGE 60 EAST, M.D.M., AS SHOWN IN BOOK 106, PAGE 31 OF PLATS ON FILE AT THE CLARK COUNTY, NEVADA RECORDERS OFFICE.

BENCHMARK
CITY OF LAS VEGAS VERTICAL CONTROL POINT "8LV90 12556", BEING A RIVET PLATE IN A CONCRETE PAD (ELEV.) @ NW CORNER OF GRAND TETON & THOM.
ELEVATION: 2341.27 (FEET)
713.6208 (METERS)
CITY OF LAS VEGAS VERTICAL CONTROL v.2002 BASED ON NORTH AMERICAN VERTICAL DATUM OF 1988 (NAVD 88)

LINE	LENGTH	BEARING
L6	63.68'	N01°31'25"E
L23	135.81'	N01°31'25"E
L24	83.18'	S00°00'19"E
L25	150.48'	S00°00'19"E
L31	119.02'	S00°00'19"E
L32	269.01'	S00°00'19"E
L33	20.51'	S00°00'19"E
L34	297.66'	S01°16'42"E
L35	14.06'	S89°59'41"E
L36	72.77'	S00°00'19"E
L37	225.06'	S01°16'42"E

CURVE	DELTA	RADIUS	LENGTH	TANGENT
C4	83°25'13"	30.00'	43.68'	26.74'
C21	96°34'47"	30.00'	50.57'	33.66'
C22	181°11'42"	100.00'	31.76'	16.01'
C23	181°11'42"	100.00'	31.76'	16.01'
C24	94°31'35"	30.00'	44.26'	27.26'
C31	183°02'00"	2.00'	6.28'	INFINITE
C32	19°31'27"	200.00'	68.15'	34.41'
C33	19°31'27"	200.00'	68.15'	34.41'

RAMP NO.	GRADE (%)	"A" (FT)	"B" (FT)
H1	-6 TO -5.01	4.5	21.5
H2	-5 TO -4.01	4.5	15.0
H3	-4 TO -3.01	4.5	12.0
H4	-3 TO -2.01	4.5	9.5
H5	-2 TO 2	8.0	8.0
H6	2.01 TO 3	9.5	4.5
H7	3.01 TO 4	12.0	4.5
H8	4.01 TO 5	15.0	4.5
H9	5.01 TO 6	21.5	4.5

SEE CLARK COUNTY AREA STANDARD DRAWING NO. 235 CASE 1

DATE: JUNE 17, 2005
 DRAWN BY: J. PEARCE
 CHECKED BY: []
 ADA CHECKED: []
 JOB NO: 005 042
 SCALE: 1" = 30'

Triton Engineering
 Office: (702) 254-1480
 Fax: (702) 254-1062
 www.tritoneng.com
 9901 Covington Cross Drive
 Las Vegas, Nevada 89144

RICHMOND AMERICAN HOMES OF NEVADA, INC.
 DECATUR / GRAND TETON
 PLAN & PROFILE
 DECATUR BOULEVARD
 STA: 62+00.00 - 71+00.00

PROFESSIONAL ENGINEER - STATE OF NEVADA
 JAMES M. PEARCE
 Exp. 12-31-07
 CIVIL
 No. 9552
 7-17-06

SHEET **12** OF 18
 C.L.V. DWG.#
 10744903

O:\Users\james.pearce\Documents\Drawings\Improvements\005 042-MP-12.dwg_rmliner Tue, 17 Jun 2005 - 2:23pm
 Avoid hitting overhead power lines it's costly
 Avoid cutting underground utility lines it's costly
 Call before you do Overhead 1-702-593-6111
 Call before you Dig. 1-800-227-2600
 075602 88751