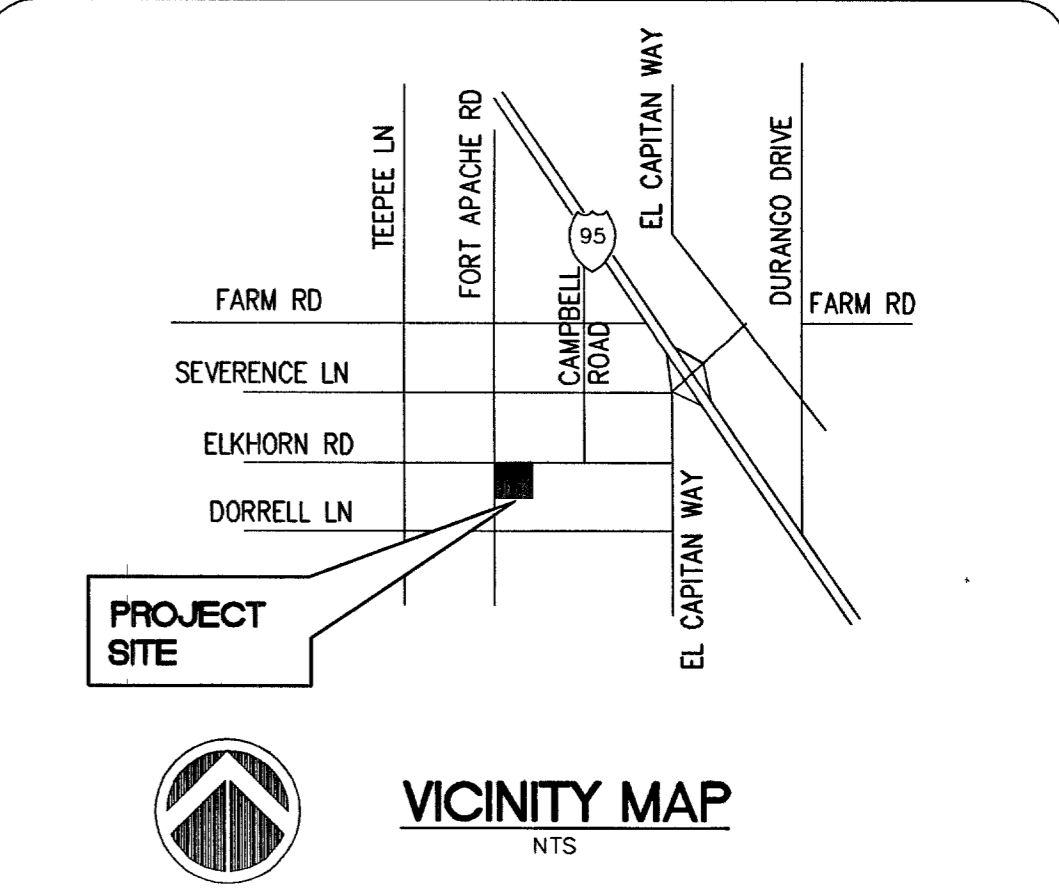


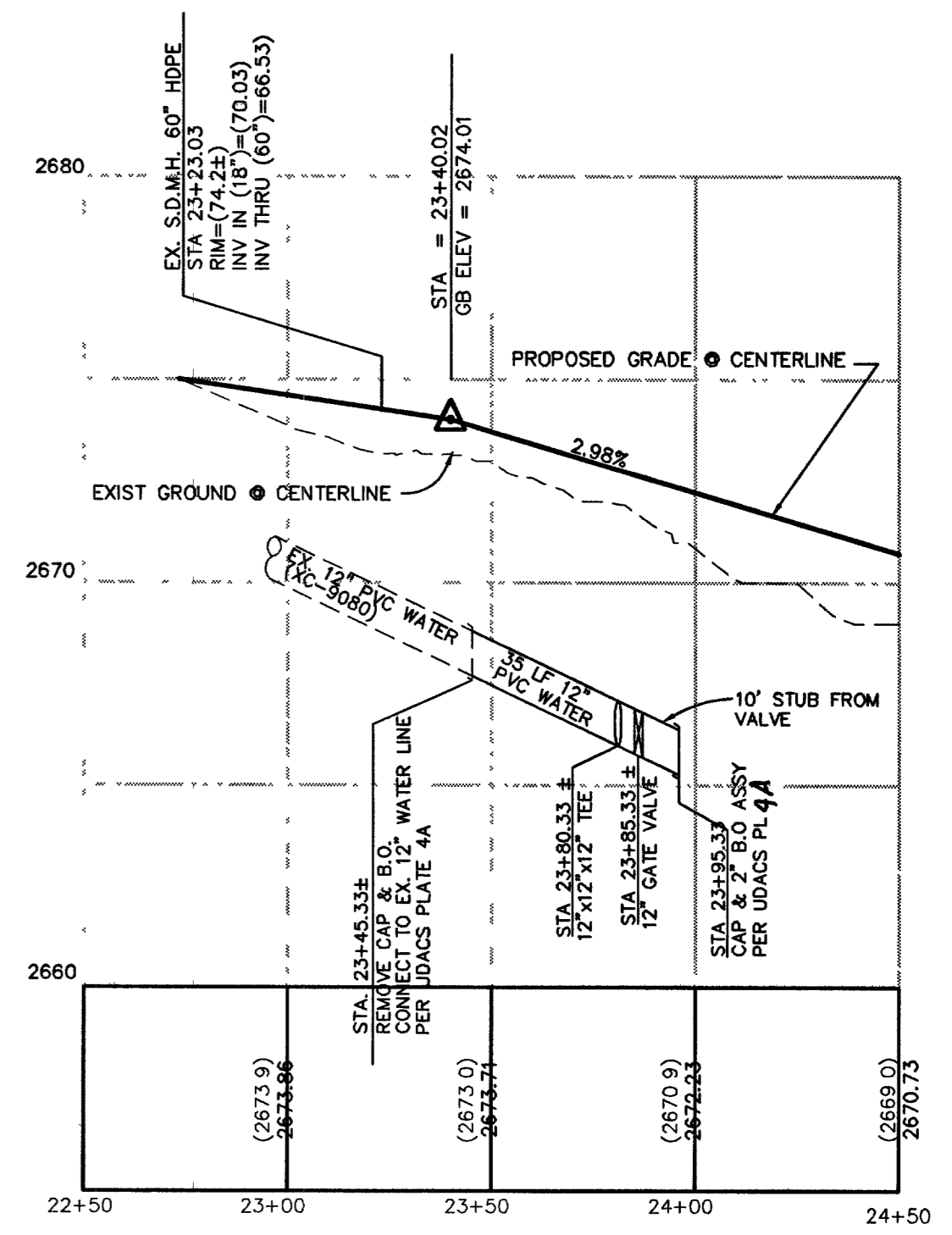
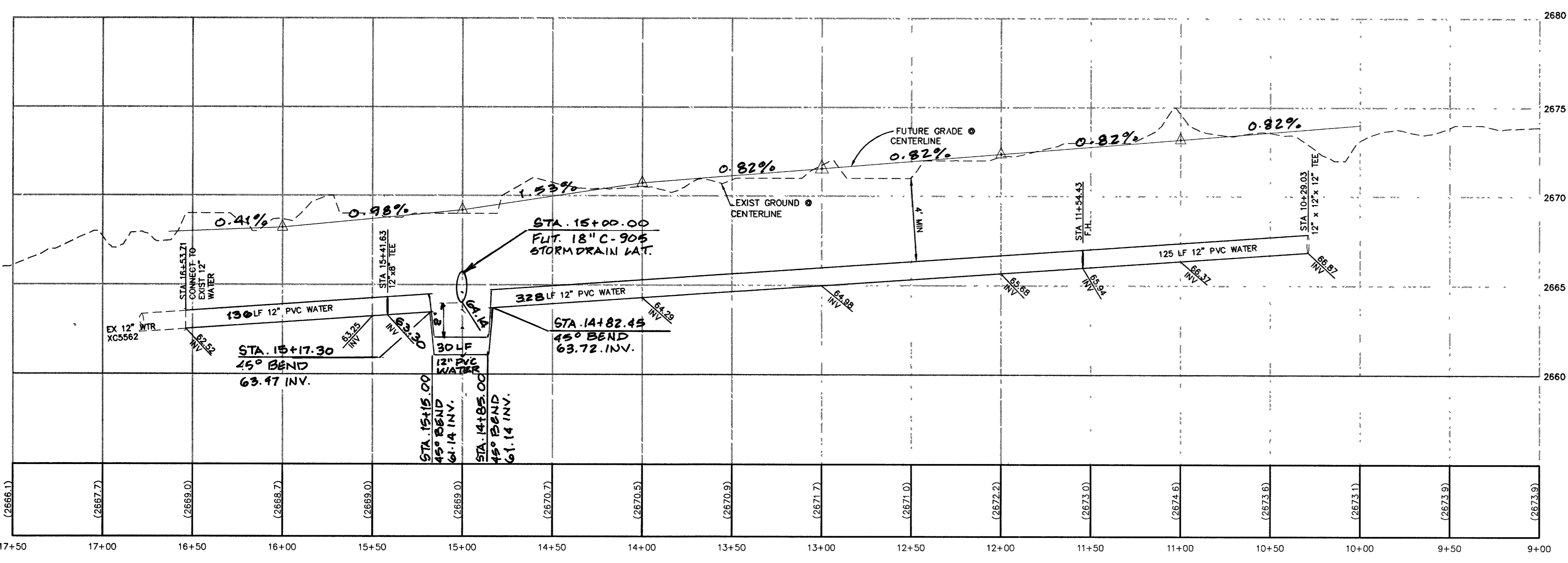
BASIS OF BEARINGS
 NORTH 00°06'43" WEST BEING THE WEST LINE OF THE SOUTHWEST QUARTER (SW 1/4) OF THE NORTHWEST QUARTER (NW 1/4) OF SECTION 19, TOWNSHIP 19 SOUTH, RANGE 60 EAST, M.D.M., CITY OF LAS VEGAS, CLARK COUNTY, NEVADA AS SHOWN BY MAP IN THE OFFICE OF THE CLARK COUNTY, NEVADA RECORDER IN FILE 114 OF SURVEYS PAGE 57

BENCHMARK
 CITY OF LAS VEGAS VERTICAL CONTROL RIVET AND PLATE IN CONCRETE CYLINDER NORTH OF ELKHORN & CAMPBELL
 STATION BLV90
 ELEVATION= 802.7625 METERS (NAV88)
 2633.73 FEET



WATER MAIN JOINT DEFLECTION (PVC, 4" - 24")
 PVC PIPE SHALL BE DEFLECTED AT THE JOINT ONLY. THE MAXIMUM ALLOWABLE DEFLECTION SHALL BE ONE (1) DEGREE PER JOINT WITH A MINIMUM RADIUS OF CURVATURE OF 1,150 FEET, PER UDACS 2.06 01 AND 2.06 02. FOR CHANGES IN DIRECTION EXCEEDING THE MAXIMUM ALLOWABLE JOINT DEFLECTION, FITTINGS SHALL BE USED

NOTE
 INSTALL PIPELINE MARKER BALLS IN TRENCH ABOVE EACH HORIZONTAL ELBOW FITTING PER UDACS PLATE # 27



WATER ESTIMATE OF QUANTITIES

| | |
|---|---------|
| 8" PVC WATER LINE | 176 LF± |
| 8" GATE VALVE PER UDACS PLATE 8 & 3 | 2 EA. |
| STD. FIRE HYDRANT W/ASSY. PER UDACS PLATE 7 | 2 EA. |
| 2" BLOW OFF W/ASSY. PER UDACS PLATE 4A | 2 EA. |
| 12" PVC WATER LINE | 624 LF. |
| 6" GATE VALVE PER UDACS PLATE 8 & 3 | 2 EA. |
| 12" GATE VALVE PER UDACS PLATE 8 | 2 EA. |
| 6" PVC WATER LINE | 56 LF. |
| 8" x 6" TEE PER UDACS PLATE 5 | 1 EA. |
| CAP & 2" B.O. ASSEMBLY PER UDACS PLATE 4A | 2 EA. |
| 12" x 12" x 8" TEE PER UDACS PLATE 5 | 1 EA. |
| 12" x 6" TEE PER UDACS PLATE 5 | 1 EA. |

FUTURE FORT APACHE ROAD PUBLIC STREET PLAN AND PROFILE

SCALE
 HORIZ. 1" = 40'
 VERT. 1" = 4'

- CONSTRUCTION NOTES**
- INSTALL 8" PVC WATER LINE
 - 8" GATE VALVE PER UDACS PLATE 8 & 3
 - CAP & 2" BLOW OFF ASSEMBLY PER UDACS PLATE 4A
 - STD. FIRE HYD. W/ASSY. PER UDACS PLATE 7
 - INSTALL 12" PVC WATER LINE
 - CONNECT TO EXISTING WATER LINE PER UDACS PLATE 4A
 - INSTALL 12" x 12" x 8" TEE PER UDACS PLATE 5
 - INSTALL 8"x6" TEE PER UDACS PLATE 5
 - INSTALL 6" GATE VALVE PER UDACS PLATE 8 & 3
 - 12" GATE VALVE PER UDACS PLATE 8
 - INSTALL 12"x6" TEE PER UDACS PLATE 5
 - INSTALL 12"x12"x12 TEE PER UDACS PLATE 5
 - REMOVE BLOW-OFF, 12" STUB AND GATE VALVE AND CAP AT TEE. INSTALL THRUST BLOCK PER UDACS PLATE NO. 5

NOTE
 THIS PROJECT PROVIDES FOR THE INSTALLATION OF OFF-SITE MAINS AND FIRE HYDRANTS ONLY, AND DOES NOT PROVIDE OR IMPLY ANY WATER COMMITMENT.

NOTE
 INSTALL PIPELINE MARKER BALLS IN TRENCH ABOVE EACH HORIZONTAL ELBOW FITTING PER UDACS PLATE # 27



APPROVALS

C.L.V. FIRE DEPARTMENT
 DATE: 05/04/05
 SCALE: 1" = 30'
 CADFILE: EF-TEMP-FH
 SHEET: 4 OF 4 SHEETS
 CLV DWG NO: 101V4872-FH

NOTICE TO CONTRACTOR!
 EXISTING UTILITY LOCATIONS SHOWN HEREON ARE APPROXIMATE ONLY. IT SHALL BE THE CONTRACTOR'S RESPONSIBILITY TO DETERMINE THE EXACT VERTICAL AND HORIZONTAL LOCATION OF ALL EXISTING UNDERGROUND UTILITIES PRIOR TO COMMENCING CONSTRUCTION. NO REPRESENTATION IS MADE THAT ALL EXISTING UTILITIES ARE SHOWN HEREON. THE ENGINEER ASSUMES NO RESPONSIBILITY FOR UTILITIES NOT SHOWN OR UTILITIES NOT SHOWN IN THEIR PROPER LOCATION.

CALL before you Dig
 1-800-227-2600
 UNDERGROUND SERVICE (USA)

CALL BEFORE YOU DO OVERHEAD
 CALL 1-702-227-2929

Underground
 1-702-455-7511
 1-702-229-6611

REVISION DESCRIPTION

| | | | |
|-----|----------|-----|-------------------------|
| NO. | DATE | BY | DESCRIPTION |
| 1 | 05/04/05 | BSA | REMOVE BLOW OFF, 12\"/> |

PROFESSIONAL ENGINEER SEAL
 MARK E. JONES
 CIVIL ENGINEER
 No. 517205

PROJECT INFORMATION
 TITLE: FUTURE FORT APACHE/ELKHORN RD PLAN AND PROFILE
 PROJECT: ELKHORN RD. AND FORT APACHE WATER MAIN EXTENSION AND FIRE HYDRANT
 CITY OF LAS VEGAS

WORK ORDER NO. 040519
 DESIGN BY: M JAMES
 DATE: 05/04/05
 SCALE: 1" = 30'
 CADFILE: EF-TEMP-FH
 SHEET: 4 OF 4 SHEETS
 CLV DWG NO: 101V4872-FH