

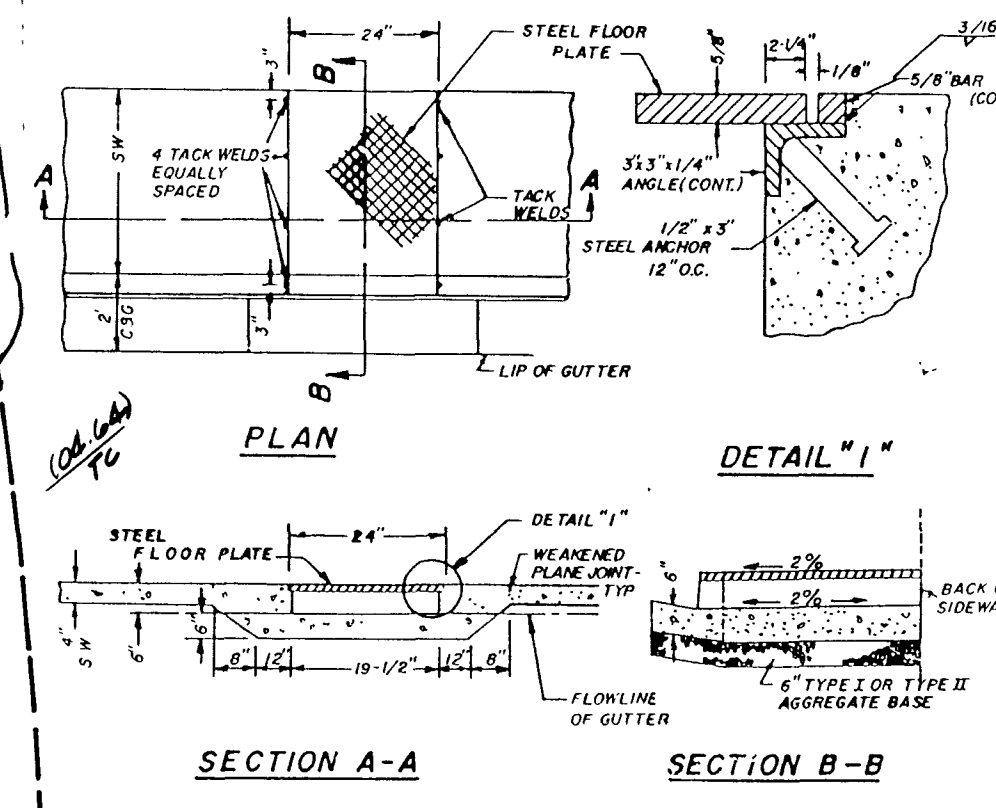
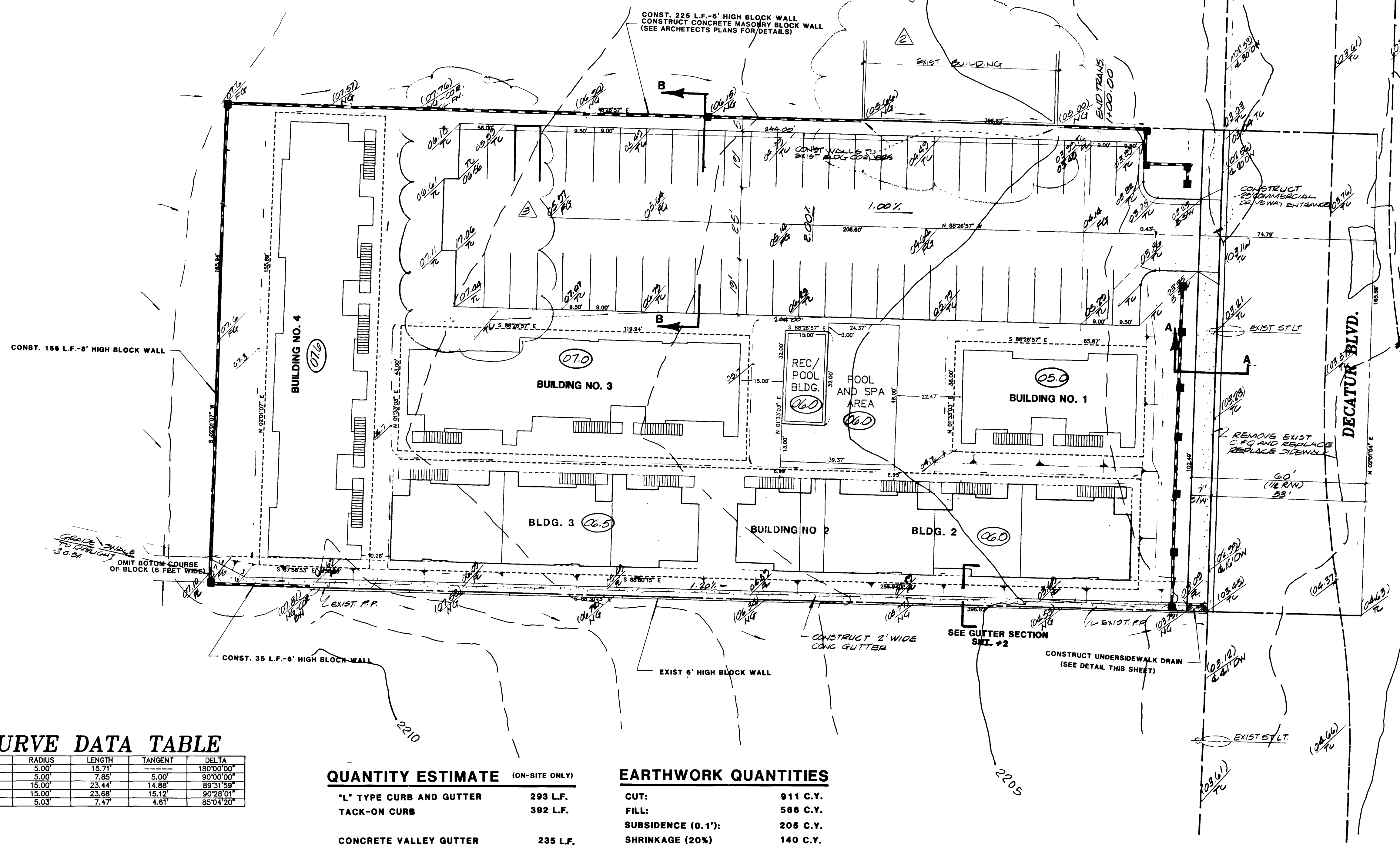


GENERAL NOTES

1. ALL GRADES SHOWN HEREON ARE TO ROUGH GRADE ONLY AND ARE 0.3 FEET LOW TO ALLOW FOR LANDSCAPING EXCEPT T.C., F.L. AND F.G., WHICH ARE TO FINISH GRADE.
2. ALL LOTS ARE BE F.H.A. TYPE "A" DRAINAGE UNLESS OTHERWISE NOTED.
3. SEE IMPROVEMENT PLANS FOR STREET SECTIONS AND DETAILS. SEE FINAL MAP FOR EXACT BEARINGS AND DISTANCES.
4. THE QUANTITIES SHOWN HEREON ARE ESTIMATES ONLY AND ARE NOT TO BE USED FOR BIDDING PURPOSES.
5. CONTRACTORS SHALL VERIFY ALL CONDITIONS AND DIMENSIONS AND SHALL REPORT ALL DISCREPANCIES TO THE ENGINEER PRIOR TO THE COMMENCEMENT OF WORK.
6. ALL GRADING TO CONFORM TO SOILS REPORT BY _____.
7. FINISH FLOOR ELEVATION TO BE 1.0 FOOT ABOVE PAD GRADE.
8. REMOVE CONCRETE CAP ON STREET LIGHT; ADJUST STREET LIGHT TO GRADE AND REPLACE CAP; IF ANY GRADE CHANGES ARE NECESSARY.

LEGEND

- III SCARP
- SET BACK (FRONT --- SIDE ---)
- SWALE
- RATE AND DIRECTION OF FLOW
- 3 LOT NUMBER
- (2) BLOCK NUMBER
- NATURAL GROUND CONTOUR
- (10.3) PAD GRADE
- T.C. TOP OF CURB
- F.G. FINISH GRADE
- F.L. FLOW LINE
- G.B. GRADE BREAK



NOTES

- 1 IF WIDTH OF PLATE IS GREATER THAN 24" A SPECIAL DESIGN IS REQUIRED.
- 2 ALL EXPOSED METAL PARTS SHALL BE GALVANIZED AND ALL GALVANIZING DAMAGED BY FABRICATION OR INSTALLATION SHALL RECEIVE TWO COATS OF ALUMINUM PAINT (GALVONOX OR EQUAL).

CURVE DATA TABLE

| CURVE | RADIUS | LENGTH | TANGENT | DELTA |
|-------|--------|--------|---------|------------|
| C1 | 5.00' | 15.71' | 7.85' | 180°00'00" |
| C2 | 5.00' | 7.85' | 5.00' | 90°00'00" |
| C3 | 15.00' | 23.44' | 14.88' | 89°31'59" |
| C4 | 15.00' | 23.68' | 15.12' | 90°28'01" |
| C5 | 5.00' | 7.47' | 4.61' | 85°04'20" |

QUANTITY ESTIMATE (ON-SITE ONLY)

| | |
|------------------------------|-----------|
| "L" TYPE CURB AND GUTTER | 293 L.F. |
| TACK-ON CURB | 392 L.F. |
| CONCRETE VALLEY GUTTER | 235 L.F. |
| 2" ASPHALTIC CONCRETE PAVING | 1403 S.Y. |

EARTHWORK QUANTITIES

| | |
|-----------------------|----------|
| CUT: | 911 C.Y. |
| FILL: | 588 C.Y. |
| SUBSIDENCE (0.1'): | 205 C.Y. |
| SHRINKAGE (20%) | 140 C.Y. |
| TOTAL (IMPORT-EXPORT) | (0) |

| REV | DATE | BY | REVISION |
|-----|---------|----|---------------------------------|
| 1 | 7/1/89 | PS | REV. PAV. CHG. |
| 2 | 8-1-91 | PS | ADD EXIST. BLDG. AT N.E. |
| 3 | 6-25-93 | PS | REV. PARKING RE. C.I.V. 11-8-91 |

ESI ENGINEERS & SURVEYORS INC.
 1010 B.W. CHARLESTON BLVD. SUITE 100 CHARLESTON, SC 29405
 (803) 733-4411
 SUBMITTED BY: *Paul E. Valching*
 DATE: 5/1/89

ROUGH GRADING PLAN
DRIFTWOOD COVE APARTMENTS

| | |
|-------|-----------|
| WO NO | 5312 |
| BY | POS |
| DATE | MAR. 1989 |
| SCALE | 1" = 20' |

SHEET
4
 OF 7 SHEETS

