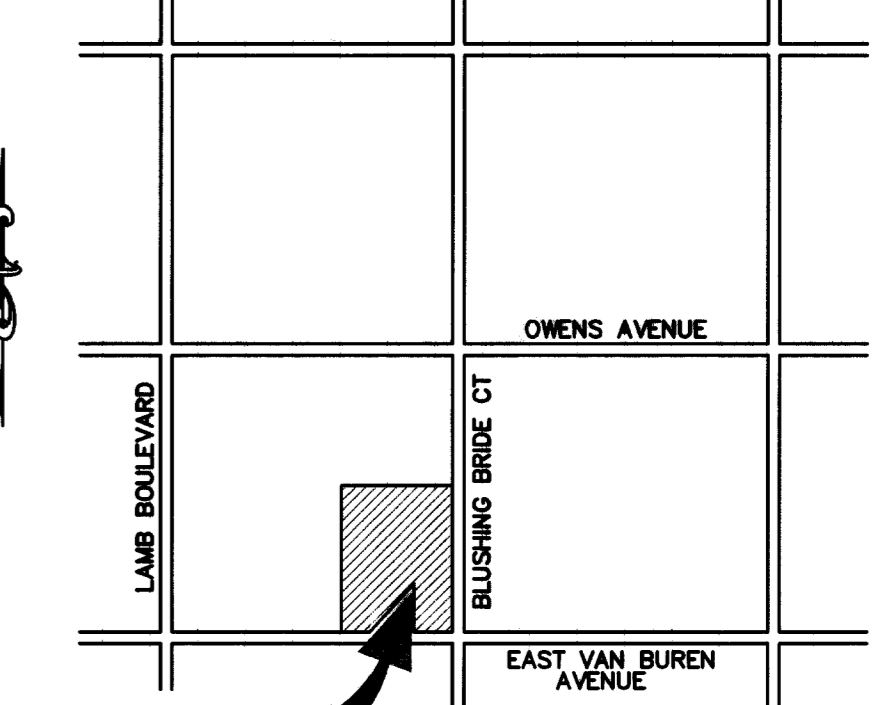
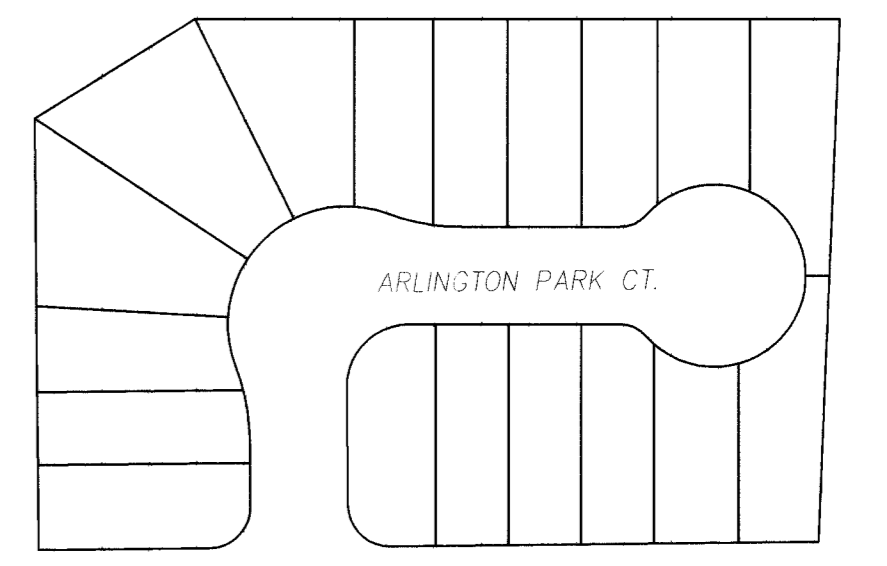


EAST VAN BUREN PLAN (PUBLIC)
SCALE: 1" = 30' HORIZ.

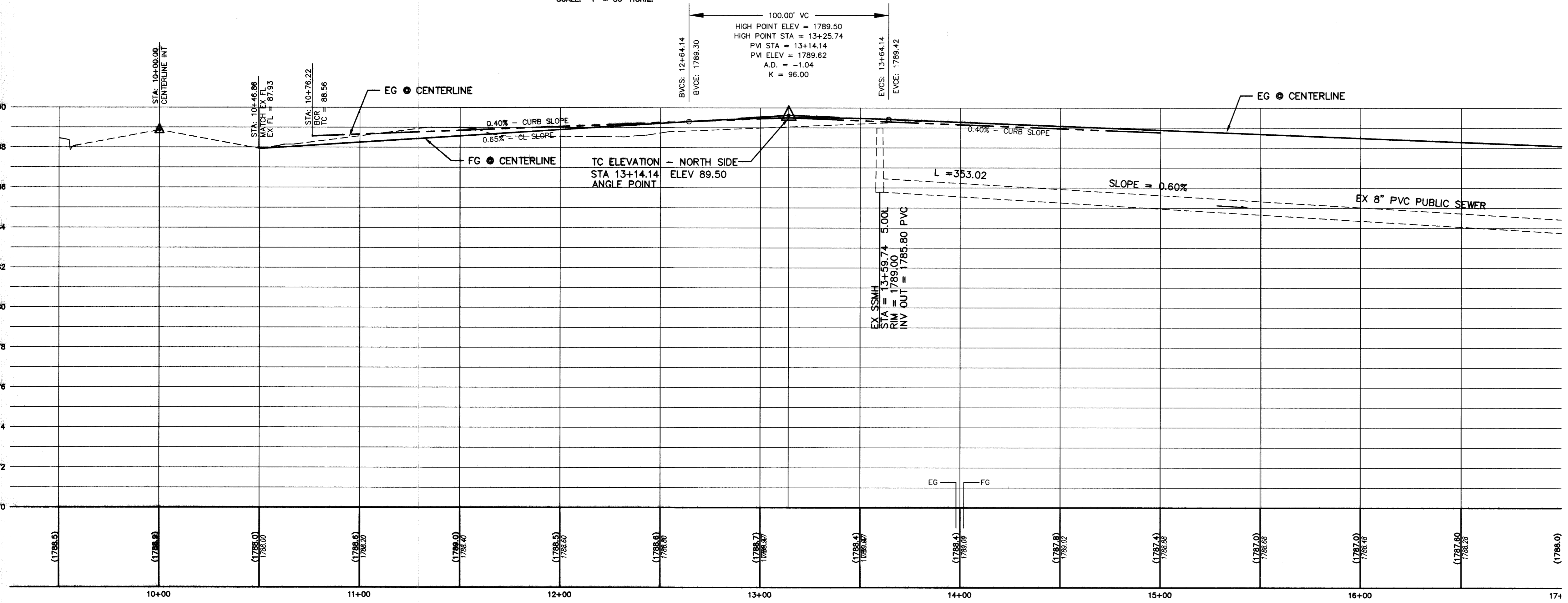
FOR CONTINUATION REFER TO SHEET PP2



VICINITY MAP
NO SCALE



KEY MAP
NO SCALE



EAST VAN BUREN PROFILE
SCALE: 1" = 30" HORIZ.
1" = 3" VERT.

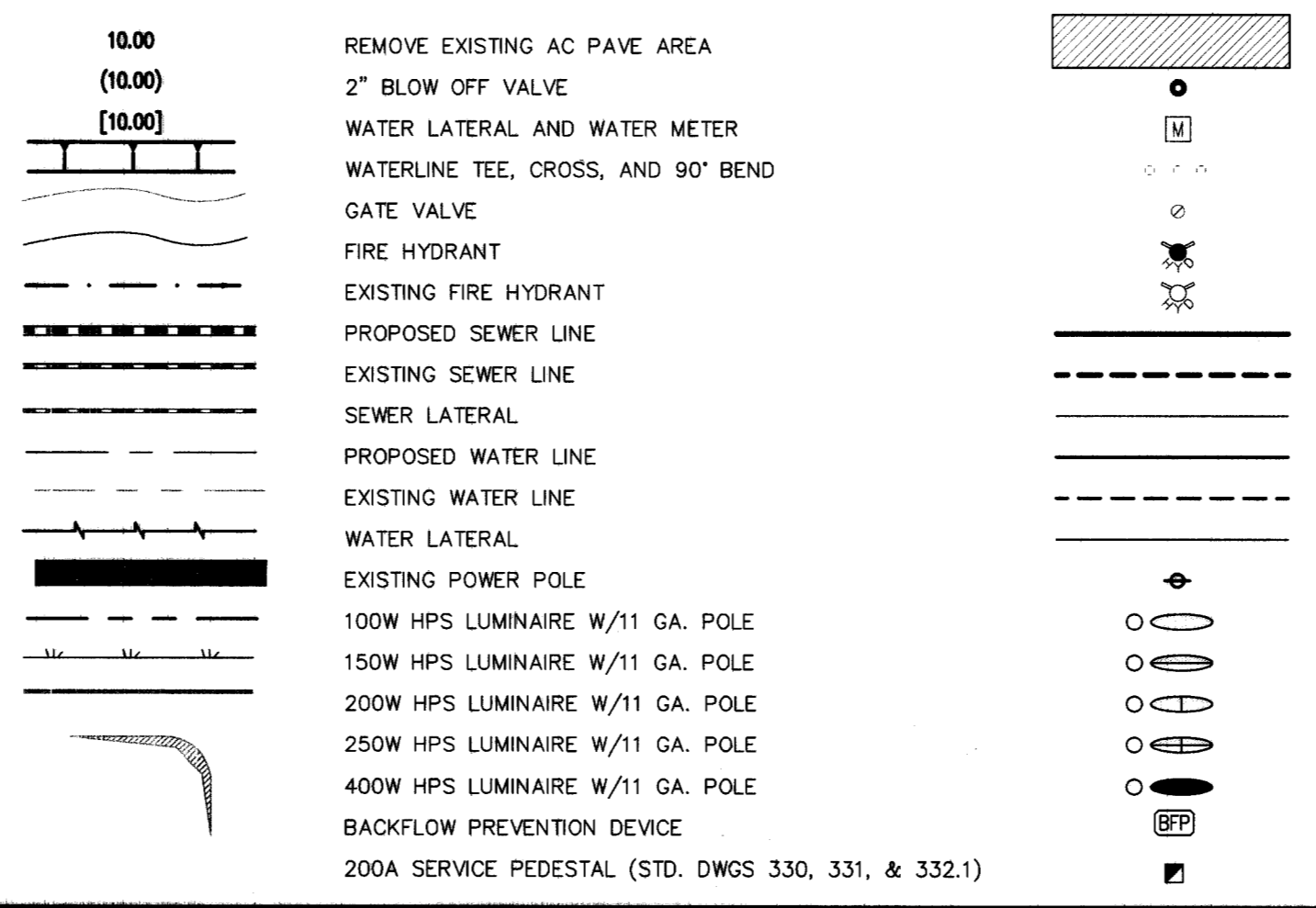
GRADING CONSTRUCTION NOTES

- 1 - CONSTRUCT 2" AC PAVEMENT OVER 4" TYPE II AGGREGATE BASE OVER 6" TYPE I AGGREGATE BASE (USD #207)
- 2 - SAWCUT & MATCH EXISTING AC PAVEMENT
- 3 - CONSTRUCT SIDEWALK UNDERDRAIN (USD #236)
- 4 - 24" L-TYPE CURB & GUTTER (USD #216)
- 5 - CONSTRUCT 3" AC PAVEMENT OVER 4" TYPE II AGGREGATE BASE OVER 6" TYPE I AGGREGATE BASE (USD #205)
- 6 - 8" CROSS GUTTER (USD #228)
- 7 - CONSTRUCT SIDEWALK (USD #234)
- 8 - CONSTRUCT SIDEWALK RAMP CASE I, A/B = 8/8 UNLESS NOTED (USD #235)
- 9 - CONSTRUCT 48"W X 24"H BLOCK WALL OPENING (DETAIL G - SHEET GD2)
- 10 - INSTALL 10' WROUGHT IRON FENCE (DETAIL B - SHEET GD2)
- 11 - CONSTRUCT BOLLARDS (DETAIL P - SHEET GD1)
- 12 - CONSTRUCT 48"W X 24"H BLOCK WALL OPENING (DETAIL O - SHEET GD1)
- 13 - CONSTRUCT 5' CONCRETE VALLEY GUTTER (DETAIL N - SHEET GD1)
- 14 - CONSTRUCT 10' CONCRETE VALLEY GUTTER (DETAIL M - SHEET GD1)
- 15 - INSTALL 12" SOLID PVC PIPE @ 3.00%
- 16 - INSTALL NEENAH R-2560-A FRAME AND GRATE AREA DRAIN OR EQUIVALENT
- 17 - INSTALL 12" PERFORATED PVC PIPE @ 3.00%
- 18 - INSTALL 5' WROUGHT IRON FENCE (DETAIL D - SHEET GD2)
- 19 - PERCOLATION PAD (DETAIL F - SHEET GD2)
- 20 - INSTALL WROUGHT IRON FENCE AND 2' HIGH FLOODWALL (DETAIL E - SHEET GD2)
- 21 - INSTALL 14' WROUGHT IRON FENCE AND 2' HIGH FLOODWALL (DETAIL H - SHEET GD2)

UTILITY CONSTRUCTION NOTES

- | | | |
|----|----------------------------------------------------------------------------|----------|
| 1 | 8" PVC WATER LINE - PUBLIC | 478.1 LF |
| 2 | 6" PVC WATER LINE - PUBLIC | 125.6 LF |
| 3 | 8" WATER LINE TEE | 1 EA |
| 4 | 3/4" IRRIGATION METER PER UDACS PLATE 1D
W/ 1" RPPA PER UDACS PLATE 11A | 1 EA |
| 5 | 2" BLOW OFF VALVE PER UDACS PLATE 4A
AND 8" CAP | 2 EA |
| 6 | 5/8" WATER METER SERVICE PER UDACS PLATE 1B | 18 EA |
| 7 | FIRE HYDRANT ASSEMBLY PER UDACS PLATE 7 | 2 EA |
| 8 | 8" GATE VALVE - PUBLIC | 2 EA |
| 9 | 8" WATER LINE 90° BEND | 1 EA |
| 10 | 8" PVC SEWER MAIN - PUBLIC | 395.9 LF |
| 11 | 4" SEWER LATERAL | 500 LF |
| 12 | 48" SEWER MANHOLE (DCSWCS SD-1) - PUBLIC | 2 EA |
| 13 | 8" WATER LINE 45° BEND | 6 EA |
| 14 | 8" X 6" REDUCER | 1 EA |
| 15 | 300PSI CONCRETE SLURRY ENCASUREMENT PER UDACS SECTION 2.19.02-B | 1 CY |
| 16 | 2" BLOW OFF VALVE PER UDACS PLATE 4A
AND 8" CAP | 1 EA |
| 17 | 8" X 6" TEE | 1 EA |
| 18 | 6" GATE VALVE - PUBLIC | 1 EA |

LEGEND



CURVE DATA

FOR CURVE DATA PLEASE REFER TO GRADING PLAN SHEET "G1".

LEGAL DESCRIPTION

A PORTION OF THE SOUTHWEST QUARTER OF THE NORTHWEST QUARTER OF THE NORTHWEST QUARTER OF SECTION 29, TOWNSHIP 20 SOUTH, RANGE 62 EAST, M.D.M., CITY OF LAS VEGAS, CLARK COUNTY, NEVADA

DISCLAIMER NOTE

EXISTING UTILITY LOCATIONS SHOWN HEREIN ARE APPROXIMATE ONLY. IT SHALL BE THE CONTRACTOR'S RESPONSIBILITY TO DETERMINE THE EXACT VERTICAL AND HORIZONTAL LOCATION OF ALL EXISTING UNDERGROUND UTILITIES PRIOR TO COMMENCING CONSTRUCTION. NO REPRESENTATION IS MADE THAT ALL EXISTING UTILITIES ARE SHOWN HEREON. THE ENGINEER ASSUMES NO RESPONSIBILITY FOR UTILITIES NOT SHOWN OR UTILITIES NOT SHOWN IN THEIR PROPER LOCATION. ALL DISCREPANCIES MUST BE IMMEDIATELY REPORTED TO THE ENGINEER. CALL BEFORE YOU DIG: 1-800-227-2600.

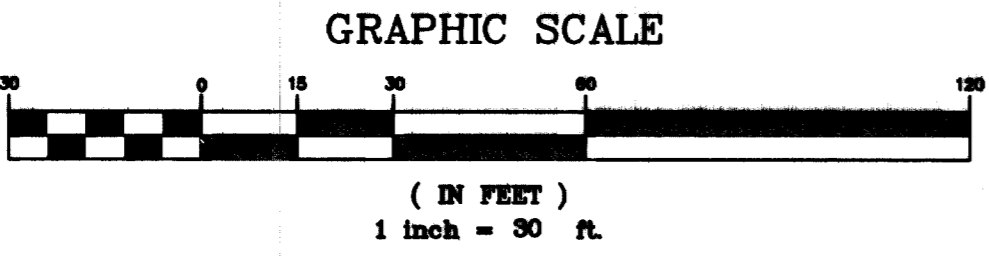
BENCHMARK

CITY OF LAS VEGAS BENCHMARK 0LV02205WB
CITY OF LAS VEGAS PIN AND PLATE IN TOP OF CURB NE CORNER OF LAMB BLVD AND OWENS AVE NEAR THE PC OF OWENS AVE (NOT STAMPED)

NAVD88 ELEVATION = 546.214 METERS (1792.04 FT)
METERS x (3937 / 1200) = U.S. SURVEY FEET

BASIS OF BEARINGS

NORTH 02°42'34" EAST - BEING THE WEST LINE OF THE NORTHWEST QUARTER OF SECTION 29, TOWNSHIP 20 SOUTH, RANGE 62 EAST, M.D.M., AS SHOWN IN THE OFFICE OF THE CLARK COUNTY, NEVADA RECORDER IN FILE 35 OF SURVEYS ON PAGE 84.



NO.	DESCRIPTION	BY	DATE	APPR.

CITATION HOMES
6895 EAST LAKE MEAD BLVD. #46-126
LAS VEGAS, NEVADA 89156
702-497-6633 FAX: 702-228-5666

TANEY ENGINEERING
445 S. JONES BLVD. SUITE #1
LAS VEGAS, NV 89103
(702) 362-8844 FAX: (702) 362-5233

EAST VAN BUREN SINGLE FAMILY HOMES
CITATION HOMES SINGLE FAMILY HOMES

EAST VAN BUREN STREET PLAN & PROFILE

ENGINEER'S SEAL

DATE: 10/2/04
SCALE: 1" = 30'
JOB NO: CTT-03-005
DESIGNED BY: RDC/MH
DRAWN BY: MH
SHEET NAME: PPI
SHEET: 7 OF 10

AVOID CUTTING UNDERGROUND UTILITY LINES. IT'S COSTLY.
CALL BEFORE YOU DIG.
1-800-227-2600

AVOID OVERHEAD POWER LINE CONTACT. IT'S COSTLY.
CALL BEFORE YOU OVERHEAD
1-702-227-2929

SEE "TRAFFIC AND ELECTRICAL NOTES" SHEET C-1. ITEM 10 "CLARK COUNTY IS NOT A MEMBER OF CALL BEFORE YOU DIG." 10794851

76606