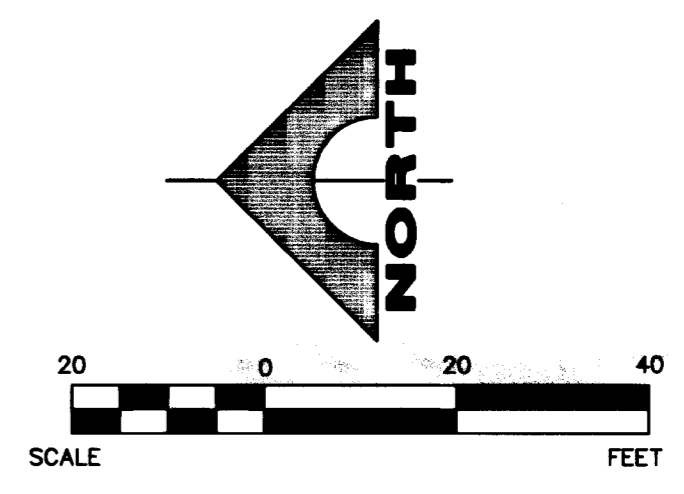
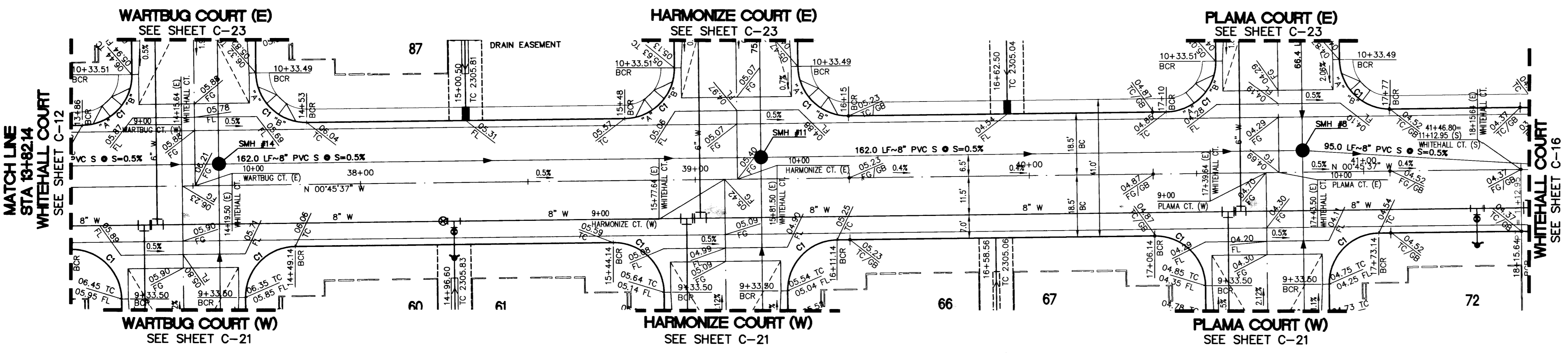


DATE: 02/14/14



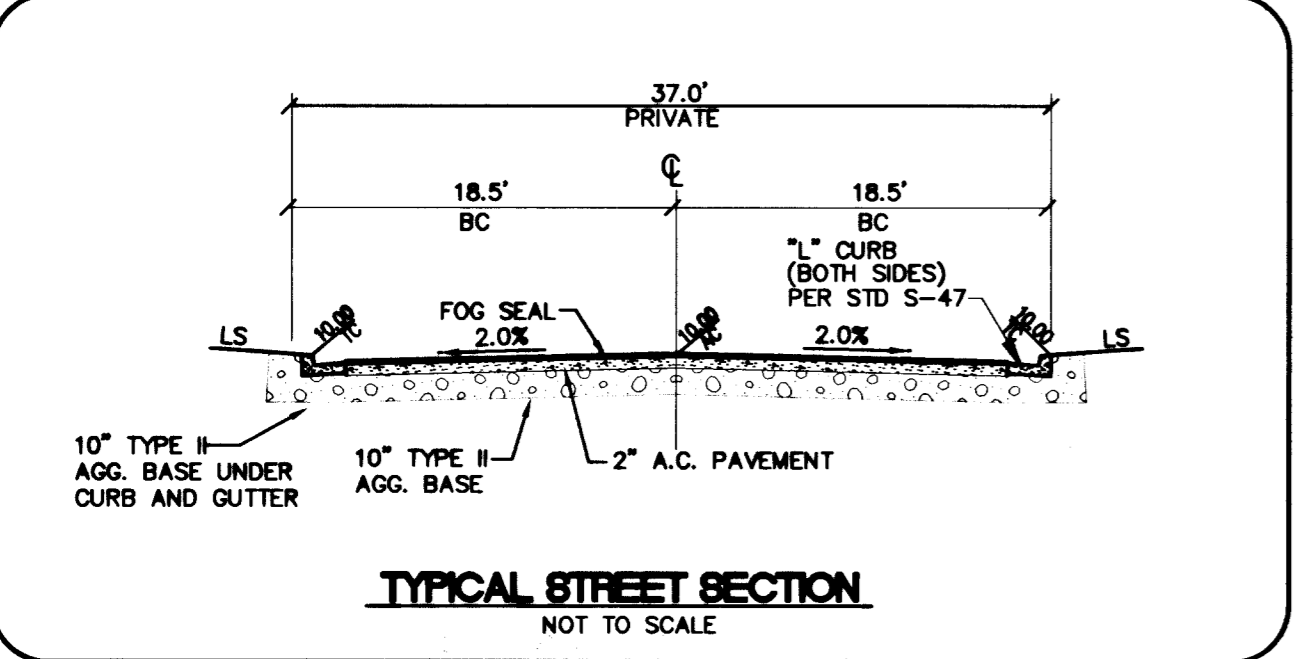
BENCHMARK
 CITY OF LAS VEGAS VERTICAL CONTROL
 BRASS CAP IN CONCRETE @ DECATUR & DEER SPRINGS (ONLV519116)
 STATION: 11V90
 24E4
 ELEVATION: 701.3687 METERS (NAVOD88)
 2301.07 FEET

BASIS OF BEARINGS
 N00°06'17"E BEING THE EAST LINE OF THE NORTHEAST QUARTER
 (NE 1/4) OF SECTION 24, TOWNSHIP 19 SOUTH, RANGE 60 EAST.
 M.D.M., CLARK COUNTY, NEVADA AS SHOWN BY MAP IN THE OFFICE
 OF THE CLARK COUNTY, NEVADA RECORDER IN FILE 57 OF SURVEYS
 PAGE 05.

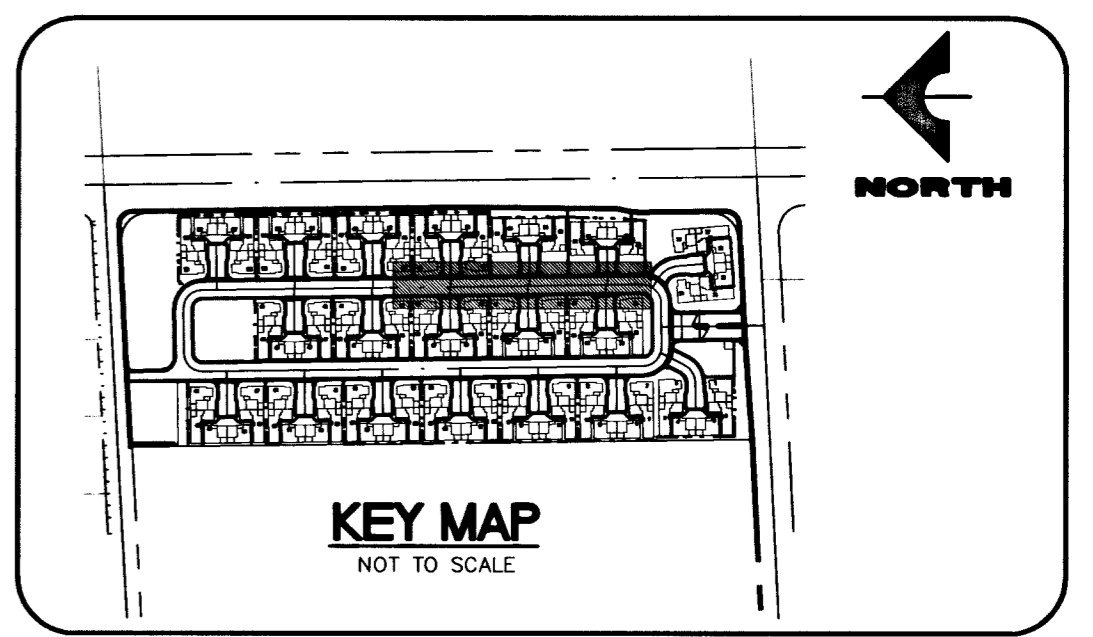
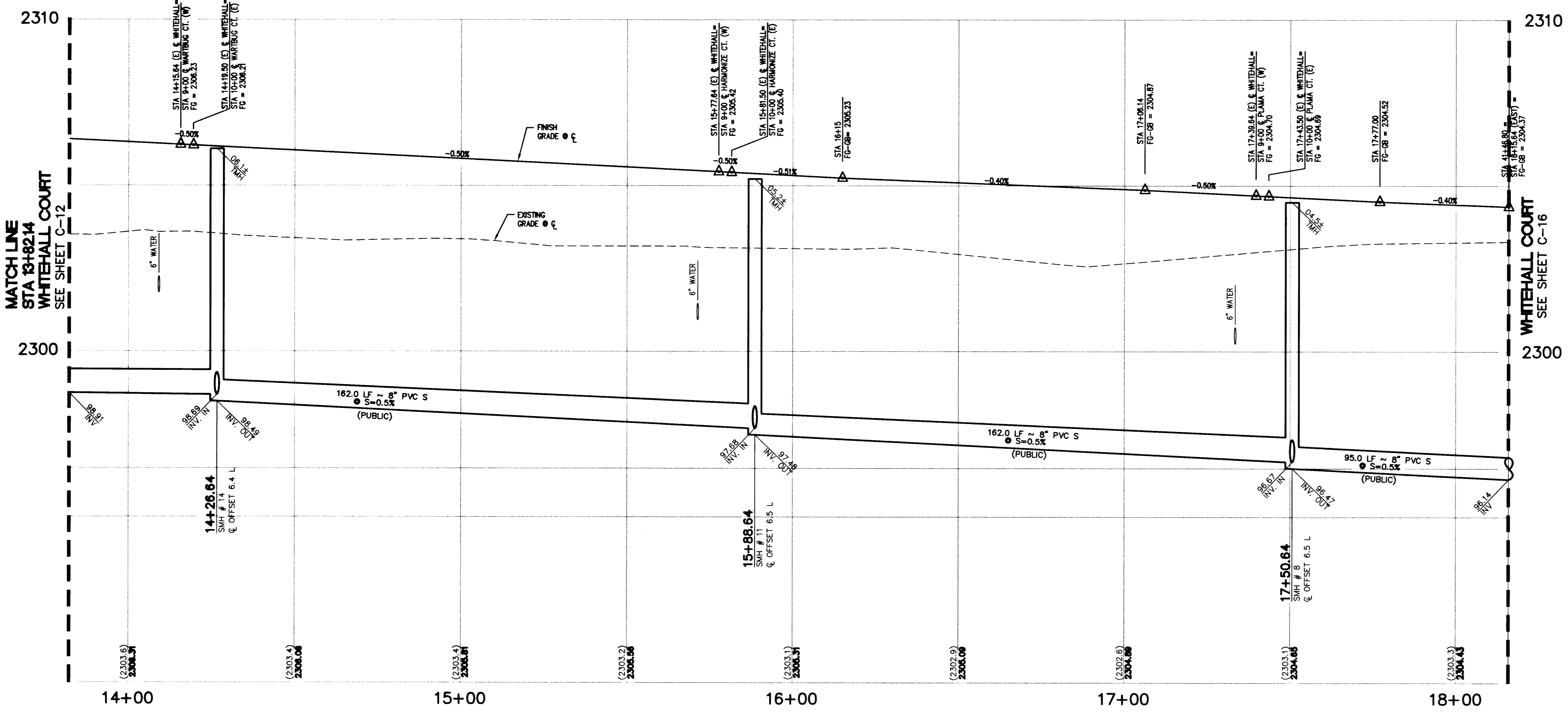
NOTE:
 CONTRACTOR TO VERIFY THE HORIZONTAL AND VERTICAL
 LOCATION OF EXISTING UTILITIES PRIOR TO CONSTRUCTION.
 REPORT ANY DISCREPANCIES TO ENGINEER IMMEDIATELY.

BCR CURVE TABLE				
CURVE	DELTA	LENGTH	RADIUS	TANGENT
CI	90°00'00"	23.56'	15.00'	15.00'

NOTE:
 ALL PRIVATE STREETS & DRIVES ARE PUBLIC SEWER EASEMENTS, PUBLIC
 UTILITY EASEMENTS AND PUBLIC DRAINAGE EASEMENTS TO BE PRIVATELY
 MAINTAINED.



**WHITEHALL COURT
 (PRIVATE)
 PLAN AND PROFILE**
 SCALE
 HORIZ. 1" = 20'
 VERT. 1" = 2'



Call Before you Dig
 UnderGround
 1-702-455-7511
 1-702-229-6611

CALL BEFORE YOU DO OVERHEAD
 1-702-227-2929

Call before you Dig
 1-800-227-2600
 UNDERGROUND SERVICE (USA)

DESIGN: M.A.G. DRAWN: M.A.S. CHECK: G.D.N. ISSUE DATE: 11/10/03 ISSUE EDITOR: PLOT DATE: 02-12-04 PLOT TIME: 07:56:23

G.C. WALLACE, INC.
 Engineers/Planners/Surveyors
 1555 SOUTH RAINBOW BLVD., LAS VEGAS, NEVADA 89146
 TELEPHONE: (702) 864-2000 • FAX: (702) 864-2299
 E: 1767-007.dwg \improva\787-007PLAN AND PROFILE.dwg

DORRELL SQUARE
DR. HORTON, INC.
WHITEHALL COURT - PLAN AND PROFILE
 STA: 13+82.14 - 18+15.64

SHEET
C-13
 13 OF 38 SHEETS

64715

10741801