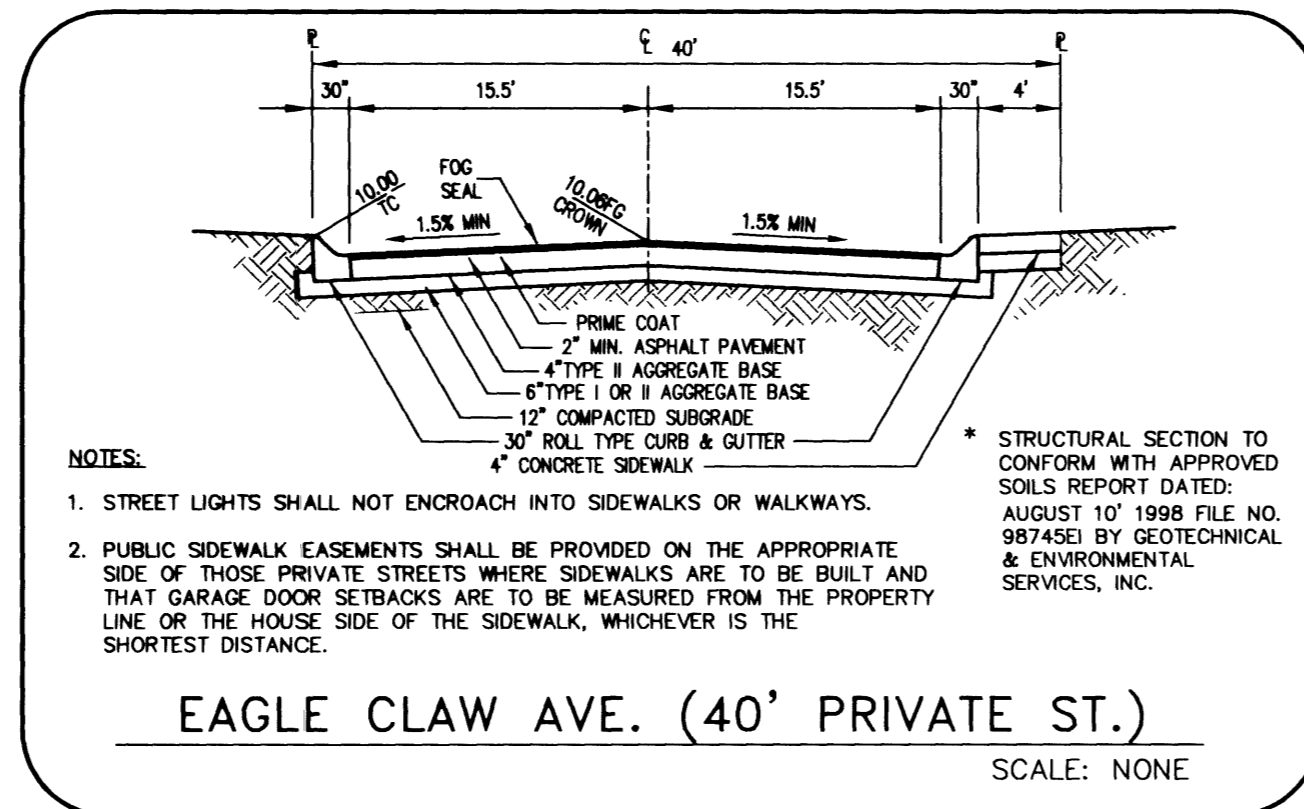


BACK OF CURB CURVE TABLE

CURVE	RADIUS	LENGTH	TANGENT	DELTA
C1	27.50'	42.76'	27.06'	89°05'00"
C2	1018.00'	329.39'	166.15'	18°32'20"
C3	504.92'	102.43'	51.39'	11°37'23"
C4	903.36'	41.64'	20.83'	02°38'28"
C5	867.36'	37.59'	18.80'	02°28'58"
C6	540.92'	109.23'	55.05'	11°37'23"
C7	982.00'	311.85'	157.25'	18°11'43"
C8	27.50'	44.95'	29.31'	93°39'28"

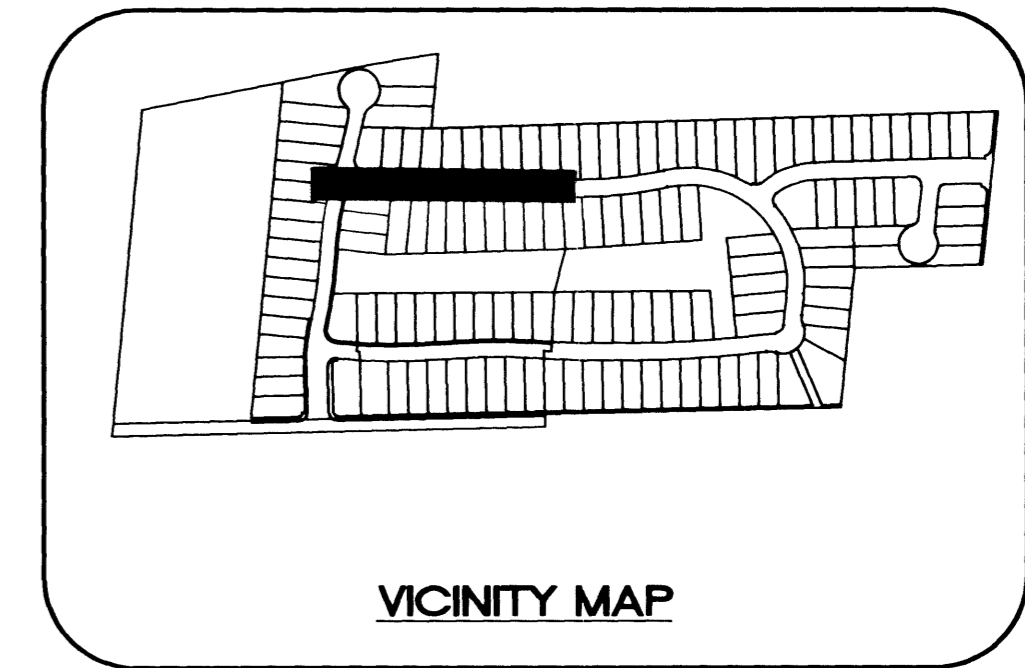
CENTERLINE CURVE TABLE

CURVE	RADIUS	LENGTH	TANGENT	DELTA
C1	1000.00'	367.03'	185.60'	21°01'46"
C2	522.92'	106.08'	53.22'	11°37'23"
C3	885.36'	36.37'	19.19'	02°28'58"



CONSTRUCTION NOTES

- CONSTRUCT 8" CONCRETE VALLEY GUTTER PER CLARK COUNTY AREA STD. DWG. NO. 228
- CONSTRUCT 1" CURB AND GUTTER PER CLARK COUNTY AREA STD. DWG. NO. 216
- CONSTRUCT TACK ON ISLAND CURB PER CLARK COUNTY STD. DWG. NO. 220
- CONSTRUCT SIDEWALK RAMP (CASE I) PER CLARK COUNTY AREA STD. DWG. NO. 235
- CONSTRUCT 5.0' WIDE CONCRETE SIDEWALK PER CLARK COUNTY AREA STD. DWG. NO. 234
- CONSTRUCT 4.0' WIDE CONCRETE SIDEWALK PER CLARK COUNTY AREA STD. DWG. NO. 234
- CONSTRUCT SIDEWALK DRAIN PER CLARK COUNTY AREA STD. DWG. NO. 236
- INSTALL TEMPORARY END OF ROAD BARRICADE
- CONSTRUCT 10.0' ROLL TO "L" TYPE CURB SEE DETAIL SHEET 17
- SAWCUT EXIST. A.C. PAVING AND REMOVE
- NOT USED
- CONSTRUCT ROLL TYPE CURB AND GUTTER PER CLARK COUNTY AREA STD. DWG. NO. 217A



VICINITY MAP

REV	DATE	BY	REVISION

Pulte Homes
An American Favorite

Carter Burgess
Consultants in Planning, Engineering, Construction Management, and Fielded Services

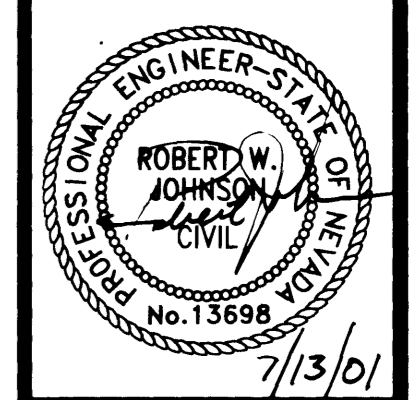
6655 Bermuda Road
Las Vegas, NV 89119
(702) 898-5400 Fax (702) 898-5454

PLAN AND PROFILE
EAGLE CLAW AVE.

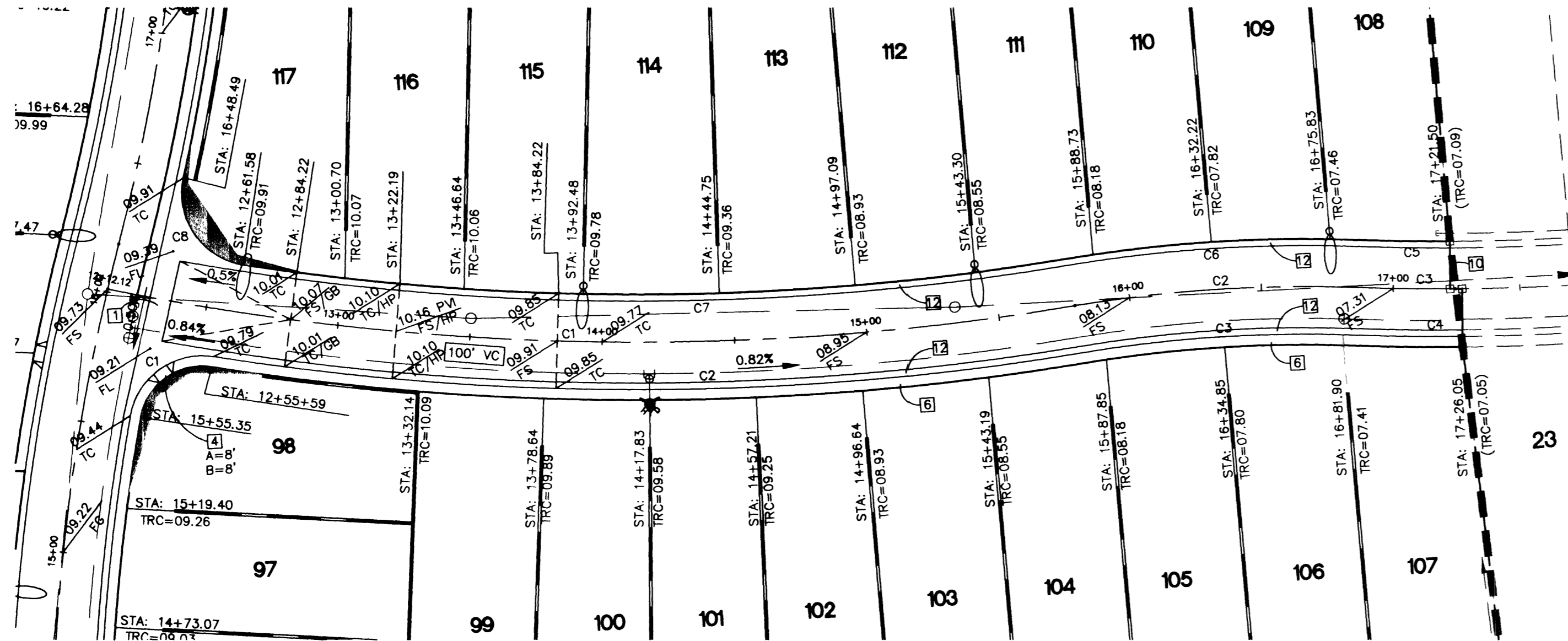
EAGLE CREEK II
PHASE 3

DRAWN BY: CAB
DESIGNED BY: EDN
CHECKED BY: RJL

PROJECT NO: 981189
SCALE: 1"=40'
HORIZ: 1"=40'
VERT: 1"=4'



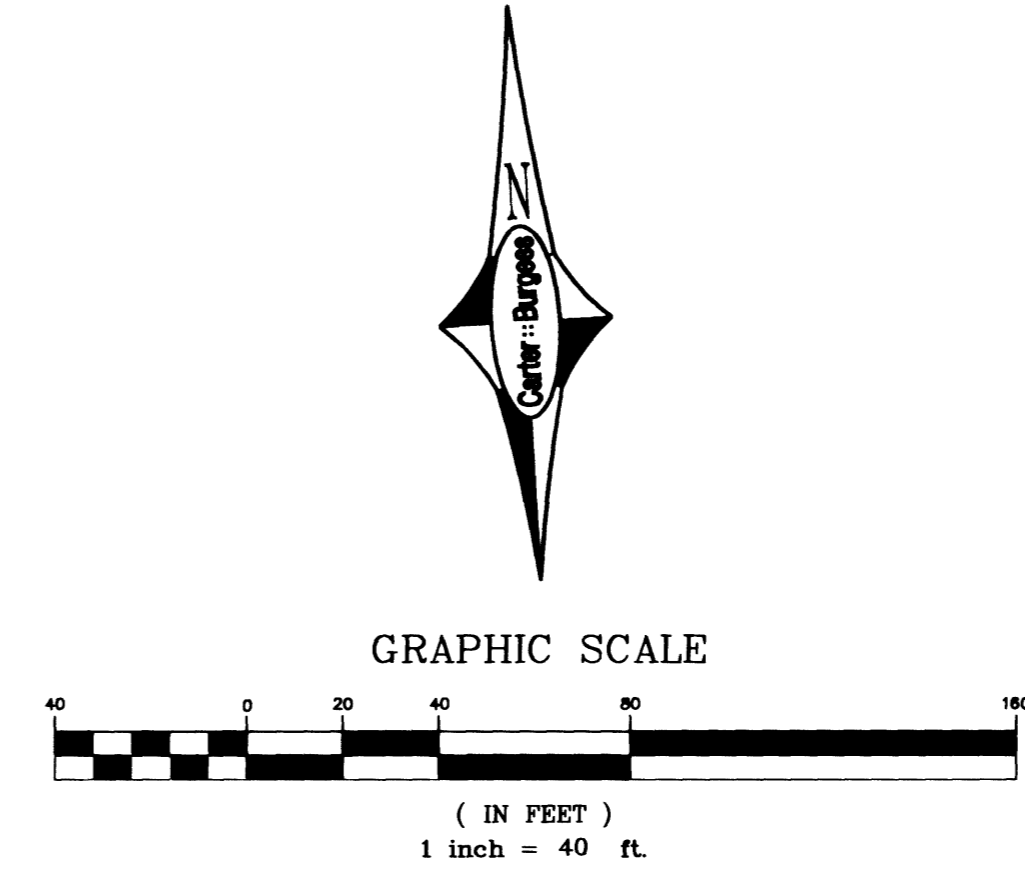
SHEET
9 OF 10 SHEETS
DRAWING NO.
107Y-4681-3



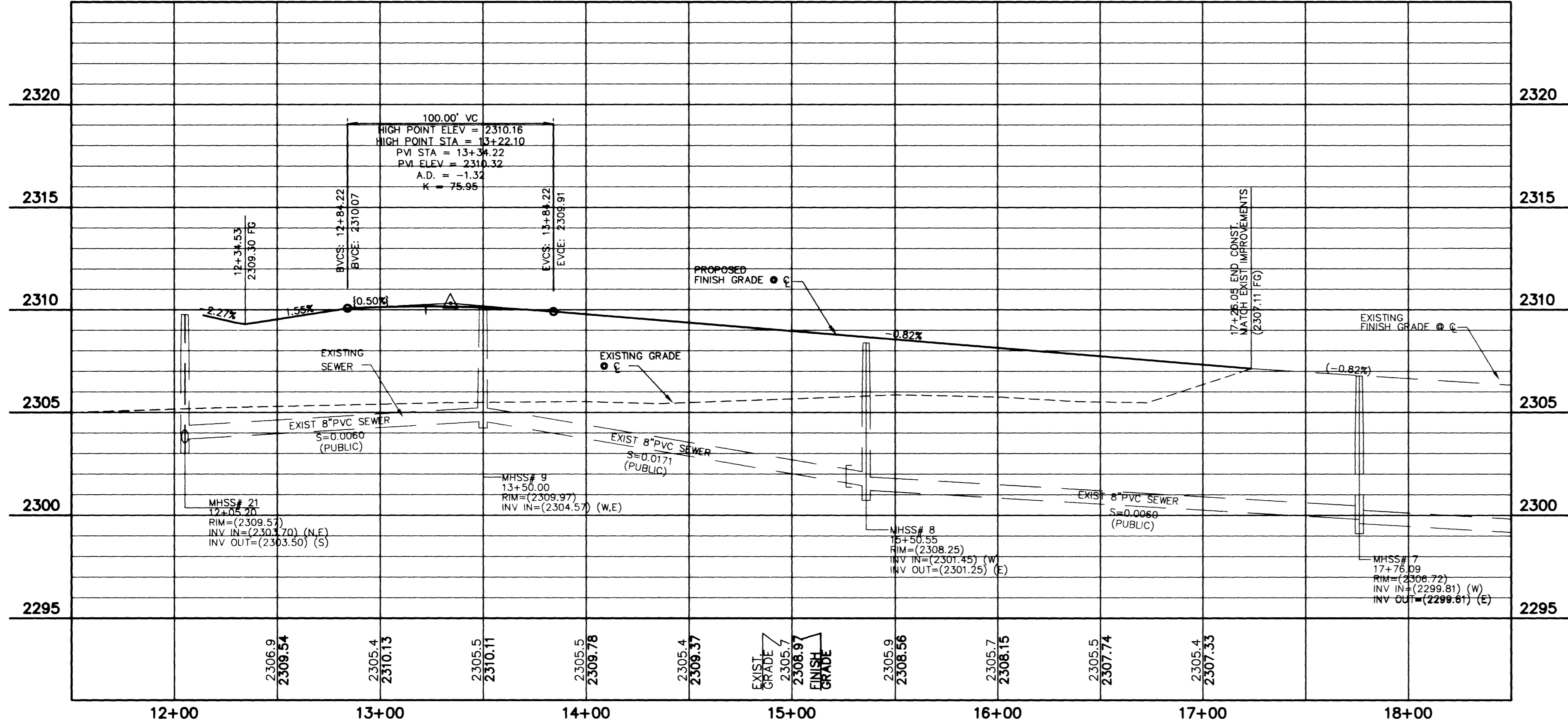
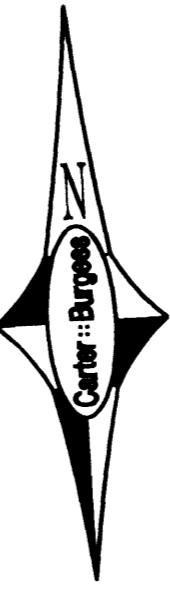
EAGLE CROSSING
(SEE SHEET 8)

EAGLE CLAW AVE. - PLAN
(MAINTAINED BY H.O.A.)

(PRIVATE STREET W/ PUE, CLV SEWER EASEMENT, PUBLIC DRAINAGE EASEMENT TO BE PRIVATELY MAINTAINED)



GRAPHIC SCALE



EAGLE CLAW AVE. - PROFILE

SCALE: HORIZ: 1"=40'
VERT: 1"=4'

NOTE:
ALL SEWER PIPE LENGTHS & SLOPES ARE CALCULATED FROM CENTER OF MANHOLE TO CENTER OF MANHOLE.

Avoid overhead power line contact. It's costly.

Call before you Overhead
1-702-593-6111
NEVADA POWER ENVIRONMENT AND SAFETY SERVICES DEPARTMENT

Avoid cutting underground utility lines. It's costly.

Call before you Dig
1-800-227-2600

BASIS OF BEARING

NORTH 88°46'05" EAST BEING THE CENTERLINE OF AZURE DRIVE AS SHOWN ON RECORDS OF SURVEY FILE 52 PAGE 70 AND FILE 90 PAGE 44 IN THE OFFICE OF THE COUNTY RECORDER, CLARK COUNTY NEVADA.

BENCHMARK

CITY OF LAS VEGAS BENCHMARK #23 1LV9025N4 BEING AN ALCAP ON REBAR AT THE CENTERLINE INTERSECTION OF CENTENNIAL PKWY. AND BRADLEY ROAD.
NAVD88 ELEVATION: 2302.77' = 701.8665 METERS

L:\981189 Design\PH3\PH3-09P.DWG - CITY OF LAS VEGAS