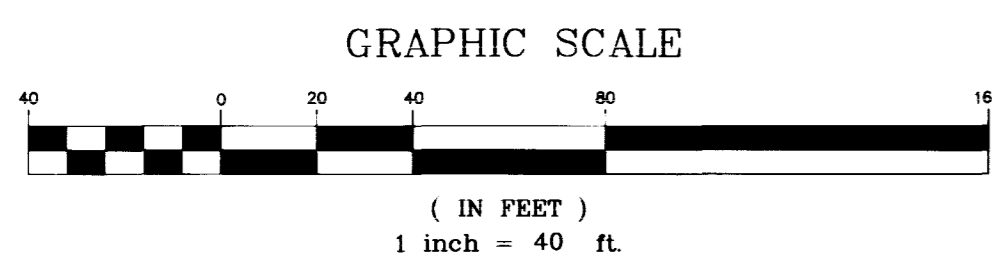
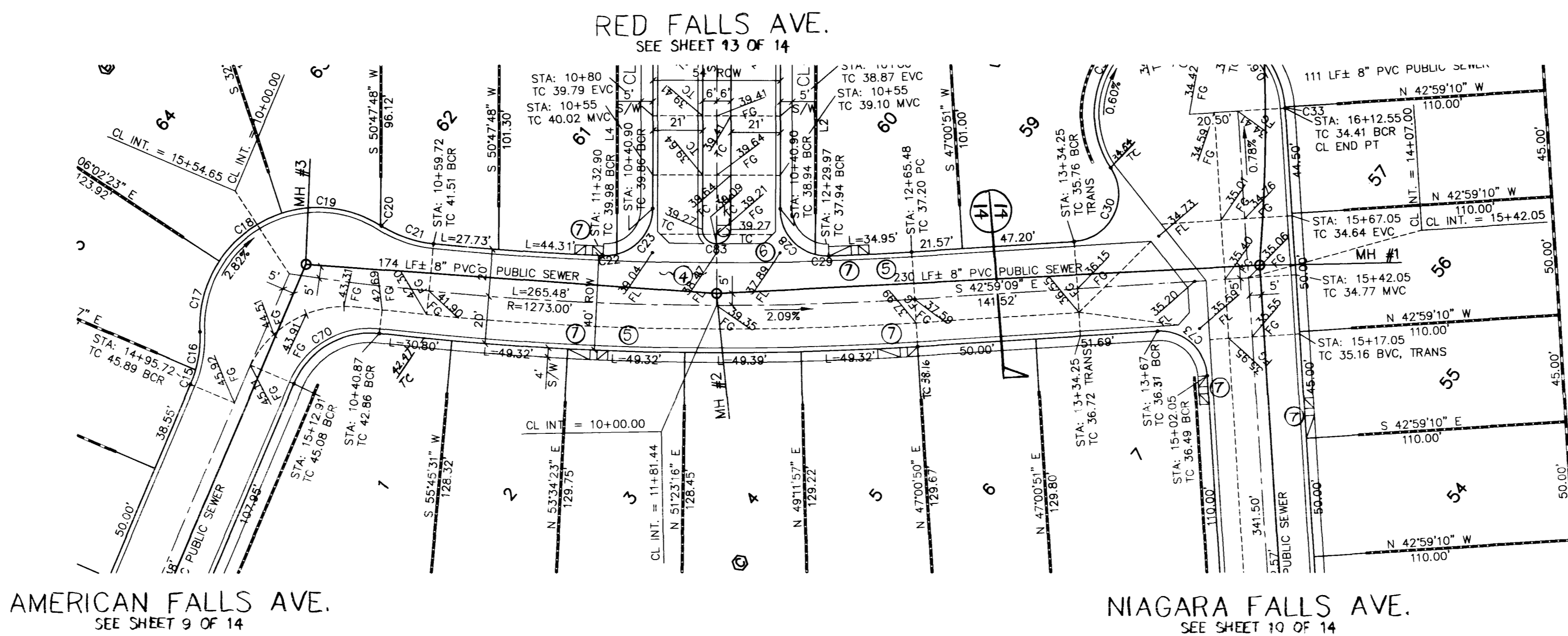
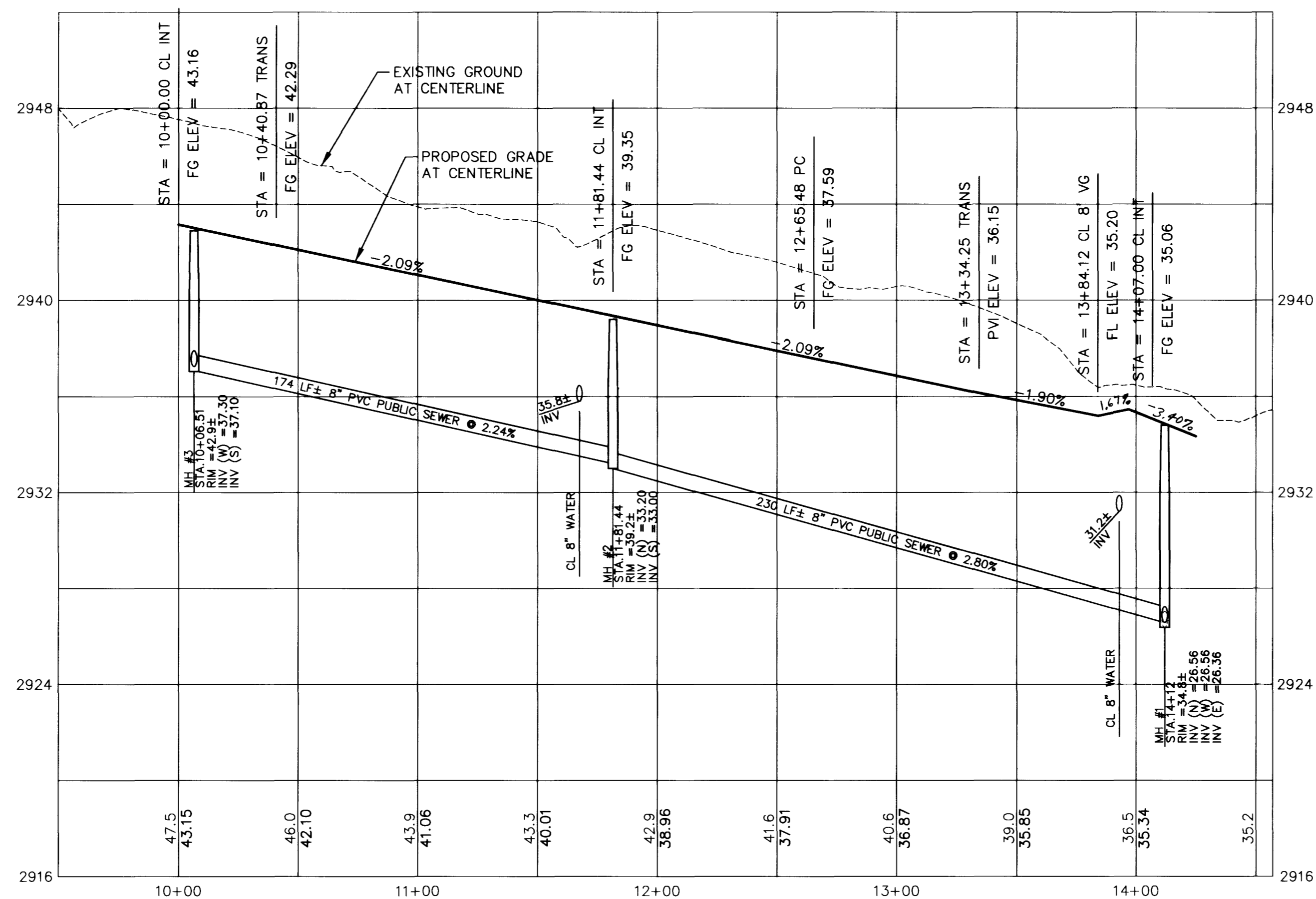


G:\S05C-R00\1500303\DWG\PP-3 Sun Jan 21 21:37:16 1996 SCOTT GRIVES



NOTICE TO CONTRACTOR !

EXISTING UTILITY LOCATIONS SHOWN HEREON ARE APPROXIMATE ONLY. IT SHALL BE THE CONTRACTOR'S RESPONSIBILITY TO DETERMINE THE EXACT VERTICAL AND HORIZONTAL LOCATION OF ALL EXISTING UNDERGROUND UTILITIES PRIOR TO COMMENCING CONSTRUCTION. NO REPRESENTATION IS MADE THAT ALL EXISTING UTILITIES ARE SHOWN HEREON. THE ENGINEER ASSUMES NO RESPONSIBILITY FOR UTILITIES NOT SHOWN OR UTILITIES NOT SHOWN IN THEIR PROPER LOCATION.

AVOID CUTTING UNDERGROUND UTILITIES. IT'S COSTLY.
CALL before you Dig
 1-800-227-2600
 UNDERGROUND SERVICE (USA)

S/W RAMP DATA		S/W RAMP DATA	
• C23	• LOT 3	• C28	• LOT 5
A = 4.5*	A = 4.5*	A = 9.5*	A = 4.5*
B = 4.5*	B = 9.5*	B = 4.5*	B = 9.5*
Y = 2.75*	Y = 2.75*	Y = 2.75*	Y = 2.75*

* SIDEWALK DOES NOT CONTINUE PAST THIS SIDE OF RAMP. THEREFORE, TRANSITION LENGTH *IS 4.5' AND A.D.A. REQUIREMENTS ARE NOT REQUIRED TO BE MET ON THIS SIDE OF RAMP.

PORT HOPE STREET (PUBLIC)

NOTE:

IF THE SEWER MAIN IS OVER THE WATER MAIN, OR LESS THAN 18 INCHES UNDER THE WATER MAIN, THEN CONCRETE ENCASE THE SEWER MAIN 10 FEET ON BOTH SIDES OF THE WATER MAIN, OR USE WATER QUALITY SEWER PIPE PER DESIGN & CONSTRUCTION STANDARDS FOR WASTEWATER COLLECTION SYSTEMS, 1991, CLARK COUNTY SANITATION DISTRICT STD. DWG. #SD-21.

SEE SHEETS 6&7 OF 14 FOR ST. LGTS & FIRE HYDRANTS

SEE SHEET 4 OF 14 FOR LINE & CURVE TABLES

SEE SHEET 14 OF 14 FOR STREET SECTIONS

BENCHMARK

BM #11 STATION 0LV00 1954
 RIVET & PLATE IN TOP OF CURB
 NW SIDE OF TOWN CENTER DR.
 & SO. CIRCLE ISLAND.
 PROJECT DATUM E.L. = 2725.923'
 (NGVD 29). EQUATION TO NAVD88
 DATUM = 2725.923' + 2.448' =
 2728.371' = 831.6074 M.

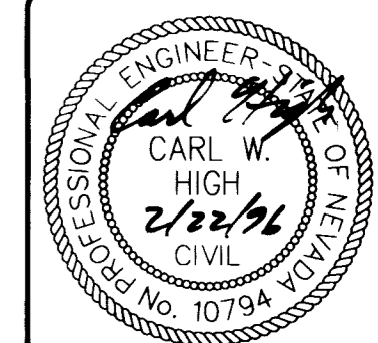
CONSTRUCTION NOTES

- EXISTING EDGE OF PAVEMENT.
- EXISTING AC PAVEMENT.
- EXISTING IMPROVEMENTS.
- CONSTRUCT NEW AC PER TYPICAL SECTION.
- CONSTRUCT NEW CURB/GUTTER AND SIDEWALK PER TYPICAL SECTION.
- CONSTRUCT 8" WIDE VALLEY GUTTER PER SUMMERLIN STD. DWG. # S-64.
- CONSTRUCT SIDEWALK RAMP PER SUMMERLIN STD. DWG. # S-77.

STREET/SEWER PLAN & PROFILE
 PORT HOPE STREET
DISCOVERY POINTE
 UNIT 1

WORK ORDER NO. 950303
 DESIGN BY C.H.
 DATE: 05/06/96
 SCALE: HOR: 1" = 40'
 VERT: 1" = 4'
 CADFILE: DP-PP-3.DWG
 SHEET 11 OF 14 SHEETS

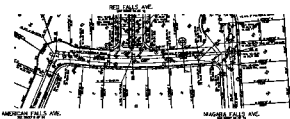
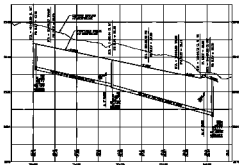
SOUTHWEST ENGINEERING
 LAND PLANNING • MAPING • DEVELOPMENT
 5426 W. VEGAS DRIVE
 LAS VEGAS, NEVADA 89108
 (702) 648-9700



NO.	DATE	BY	APP'D	REVISION DESCRIPTION

STAMP DATE

107Y-4491-1



PORT HOPE STREET

1950-1951

FOR THE USE OF THE CITY OF PORT HOPE, MISSISSIPPI, THIS PLAN IS A PART OF THE RECORD MAPS OF THE CITY OF PORT HOPE, MISSISSIPPI, AND IS SUBJECT TO THE RECORD MAP ACT, MISSISSIPPI, AND THE RECORD MAP ACT, MISSISSIPPI, AND THE RECORD MAP ACT, MISSISSIPPI.

BY ORDER OF THE CITY OF PORT HOPE, MISSISSIPPI

1950-1951

BY ORDER OF THE CITY OF PORT HOPE, MISSISSIPPI

BENCHMARK

NO. 101 BENCH MARK IS
 100.00 FEET IN 100 FEET
 IN USE OF THE LOCAL PL.
 100.00 FEET IN 100 FEET
 IN USE OF THE LOCAL PL.
 100.00 FEET IN 100 FEET
 IN USE OF THE LOCAL PL.

CONSTRUCTION NOTES

1. EXISTING MANHOLE
2. EXISTING MANHOLE
3. EXISTING MANHOLE
4. EXISTING MANHOLE
5. EXISTING MANHOLE
6. EXISTING MANHOLE
7. EXISTING MANHOLE
8. EXISTING MANHOLE
9. EXISTING MANHOLE
10. EXISTING MANHOLE

NOTE TO CONTRACTOR
 THE CITY OF PORT HOPE, MISSISSIPPI, HAS THE HONOR OF CONTRACTING FOR THE CONSTRUCTION OF THE PORT HOPE STREET, MISSISSIPPI, AND IS SUBJECT TO THE RECORD MAP ACT, MISSISSIPPI, AND THE RECORD MAP ACT, MISSISSIPPI, AND THE RECORD MAP ACT, MISSISSIPPI.

CALL
 100.00 FEET IN 100 FEET
 IN USE OF THE LOCAL PL.
 100.00 FEET IN 100 FEET
 IN USE OF THE LOCAL PL.

100.00 FEET IN 100 FEET
 IN USE OF THE LOCAL PL.
 100.00 FEET IN 100 FEET
 IN USE OF THE LOCAL PL.

MISSISSIPPI STATE ENGINEERING BOARD

REGISTERED PROFESSIONAL ENGINEER

DISCOVERY POINT

1950-1951