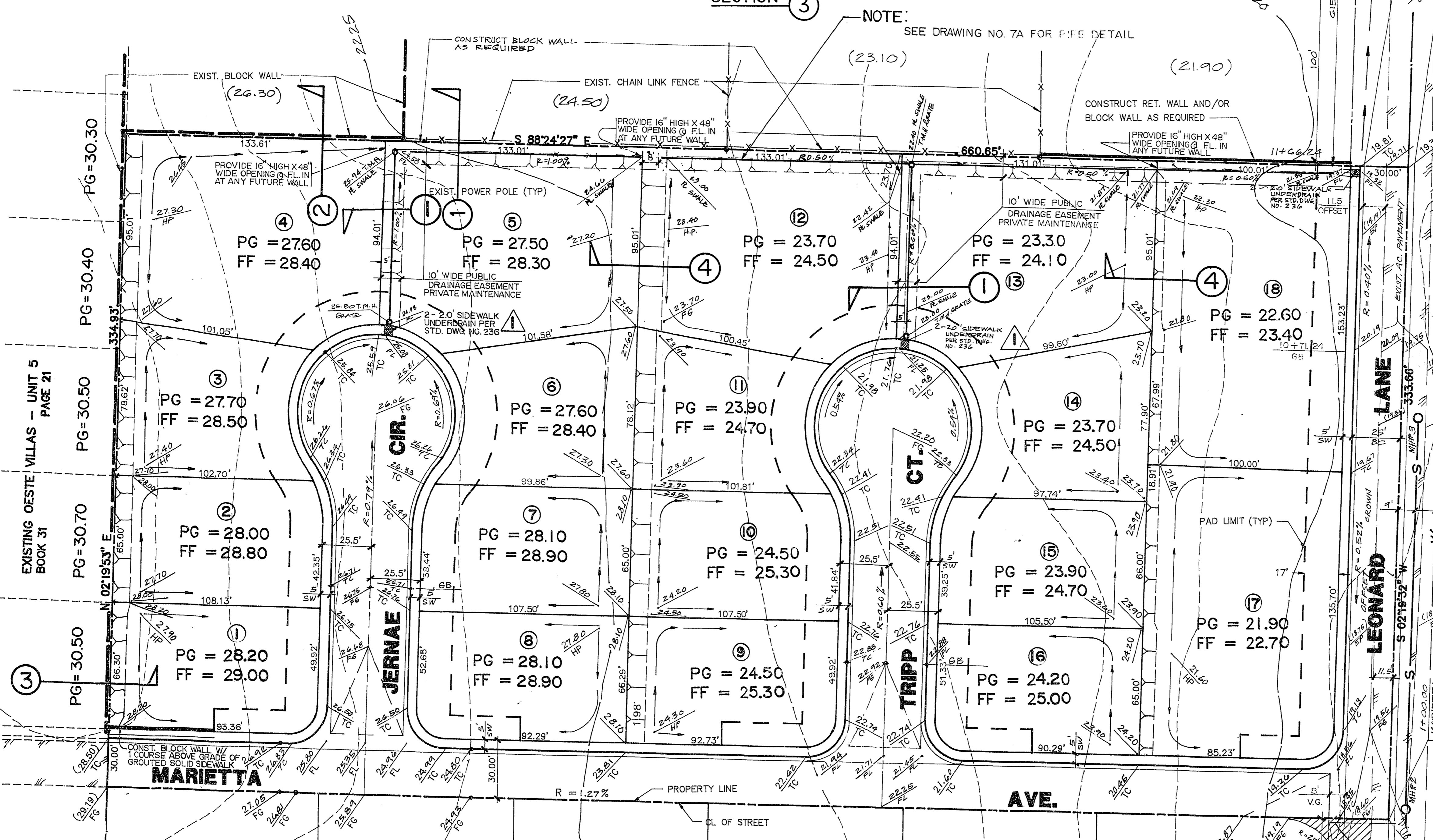


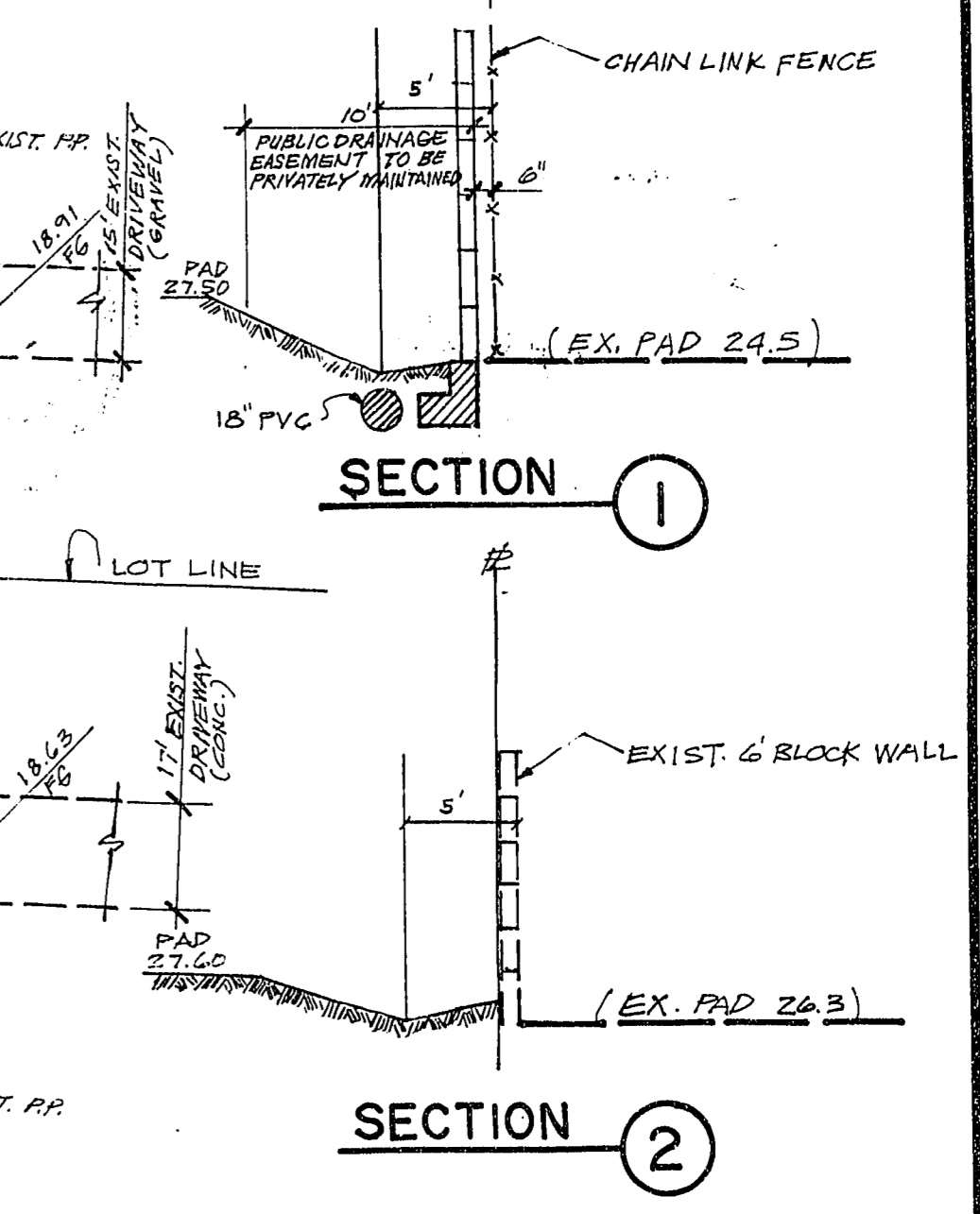
REV.	DATE	DESCRIPTION
1	11/26/95	REPLACE YARD SWALE WITH 12\"/>
2	11/26/95	REPLACE YARD SWALE WITH 12\"/>



- LEGEND**
- EXIST. BLOCK WALL
 - FLOOD WALL
 - Ⓐ BLOCK NUMBER
 - - - EXISTING CONTOUR
 - - - SEWER LINE
 - - - WATER LINE
 - EXISTING MANHOLE
 - PROPOSED MANHOLE
 - - - TRACT BOUNDARY
 - - - EXIST. CHAIN LINK FENCE
 - - - RETAINING WALL

BENCHMARK
 RIVET AND PLATE IN TOP OF CURB, SOUTH SIDE OF VEGAS DRIVE AT LEONARD LANE.
 ELEV. = 2222.17 1929 DATUM

NOTE:
 THE NORTH HALF OF THE PROP. SOUTH OF MARIETTA AVENUE ARE UNDEVELOPED, HOUSE FRONT ON VEGAS DRIVE.



ENGINEER'S CERTIFICATE:
 I CERTIFY THAT THIS GRADING PLAN IS IN CONFORMANCE WITH THE APPROVED DRAINAGE STUDY ON FILE AT THE CITY OF LAS VEGAS FOR THIS PROJECT.
 LEONARDO V. DELUNA, P.E.
 10/02/95 / DATE

DelUNA, INC.
 ENGINEERING • PLANNING • SURVEYING
 7310 SMOKE RANCH ROAD SUITE T, LAS VEGAS, NEVADA 89108, (702) 255-8242

SHEET CONTENTS
 KAY L. DIXON PROPERTIES
 DIXON ESTATES
 GRADING PLAN

SHEET 7
 OF 7 SHEETS

11-26-69

107Y-4432