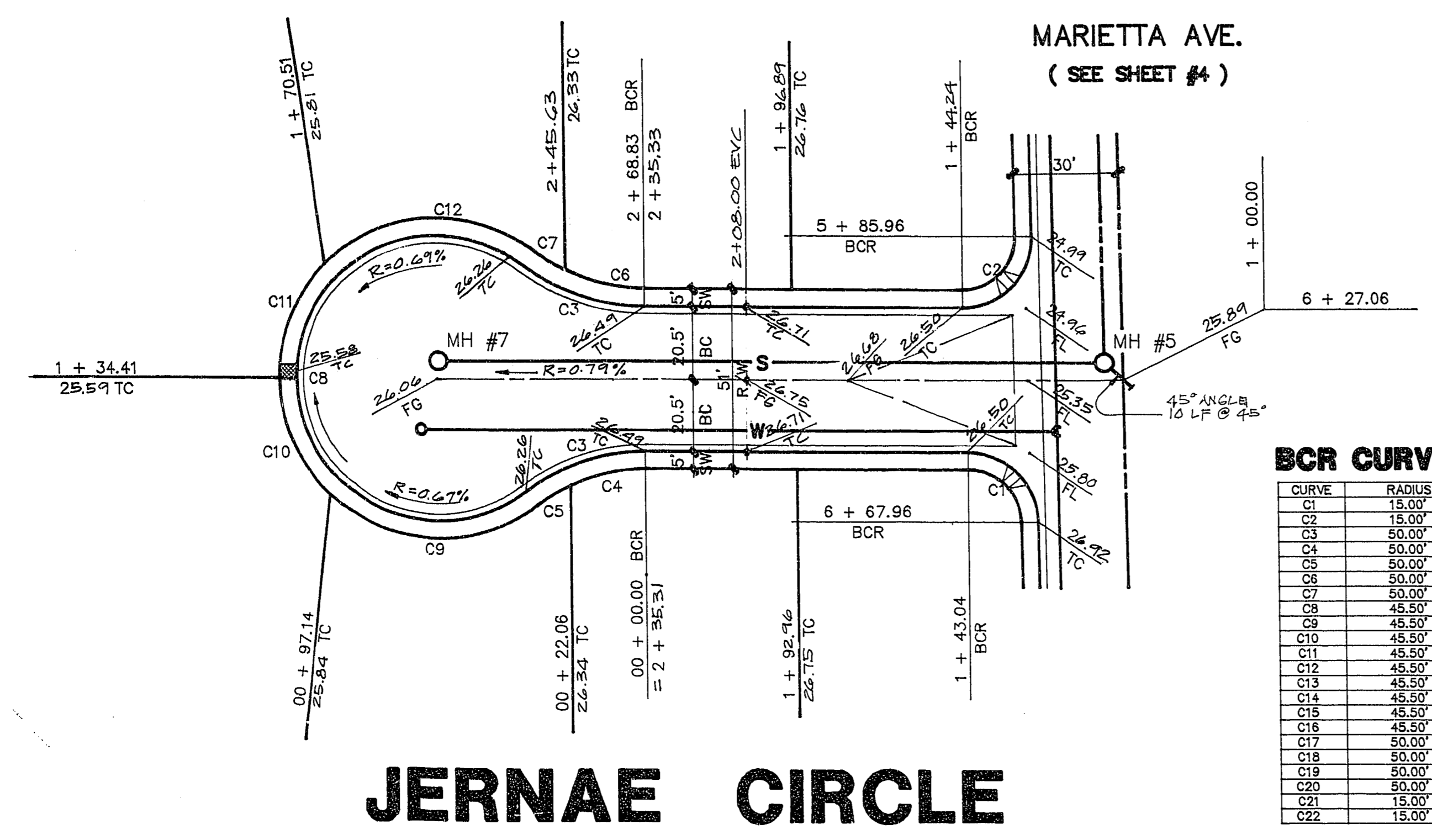
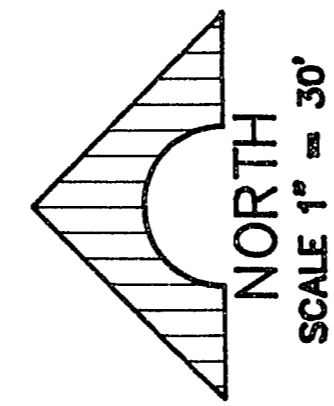
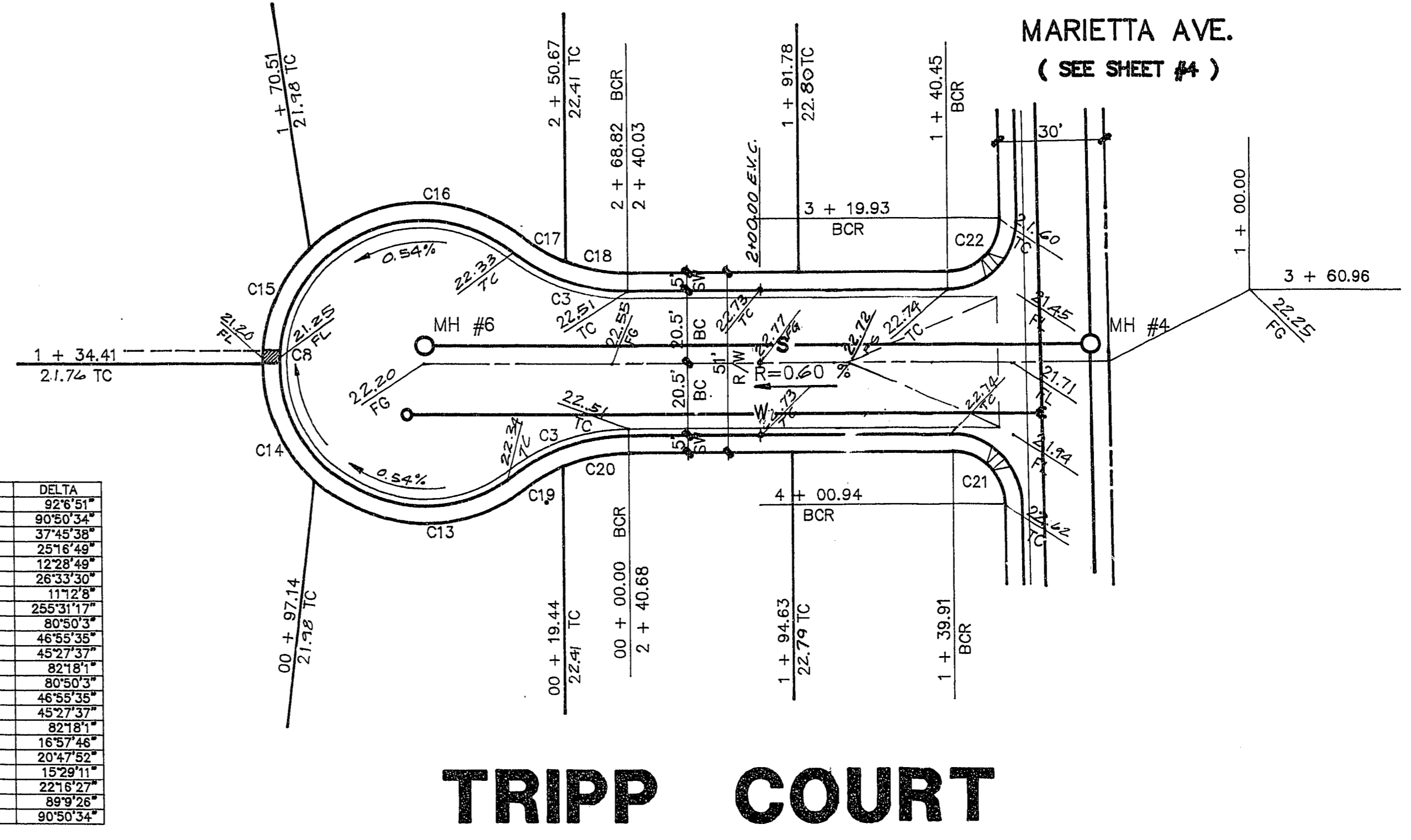


PROFILE
 HORIZ: 1" = 30'
 VERT: 1" = 5'



JERNAE CIRCLE



TRIPP COURT

BCR CURVE DATA

CURVE	RADIUS	LENGTH	TANGENT	DELTA
C1	15.00'	24.17'	15.58'	92°51'
C2	15.00'	23.75'	15.22'	90°54'
C3	50.00'	32.85'	17.10'	37°45'38"
C4	50.00'	22.06'	11.21'	25°16'49"
C5	50.00'	10.89'	5.47'	12°23'49"
C6	50.00'	23.18'	11.80'	26°33'30"
C7	50.00'	9.78'	4.90'	11°12'9"
C8	45.50'	202.92'	58.74'	255°31'17"
C9	45.50'	64.19'	38.75'	80°50'51"
C10	45.50'	37.27'	19.75'	46°53'35"
C11	45.50'	36.10'	19.06'	45°27'37"
C12	45.50'	65.38'	39.76'	82°16'11"
C13	45.50'	64.19'	38.75'	80°50'51"
C14	45.50'	37.27'	19.75'	46°53'35"
C15	45.50'	36.10'	19.06'	45°27'37"
C16	45.50'	65.38'	39.76'	82°16'11"
C17	50.00'	14.80'	7.46'	16°57'46"
C18	50.00'	18.15'	9.18'	20°47'52"
C19	50.00'	13.51'	6.80'	15°29'11"
C20	50.00'	18.44'	9.84'	22°18'21"
C21	15.00'	23.34'	14.78'	89°9'26"
C22	15.00'	23.78'	15.22'	90°50'54"

RECOMMENDED BY THE STATE OF NEVADA
 LEONARDO V. DALRYMPLE
 3784 8/31/45
 R.E. NO. / DATE

DeLUNA, INC.
 ENGINEERING • PLANNING • SURVEYING
 7310 SMOKE RANCH ROAD, SUITE 1, LAS VEGAS, NEVADA 89109, (702) 255-8242

SHEET CONTENTS:
 KAY L. DIXON PROPERTIES
 DIXON ESTATES
JERNAE CIRCLE & TRIPP COURT

SHEET 6 OF 7 SHEETS

9418

11-26-68

107Y-4432