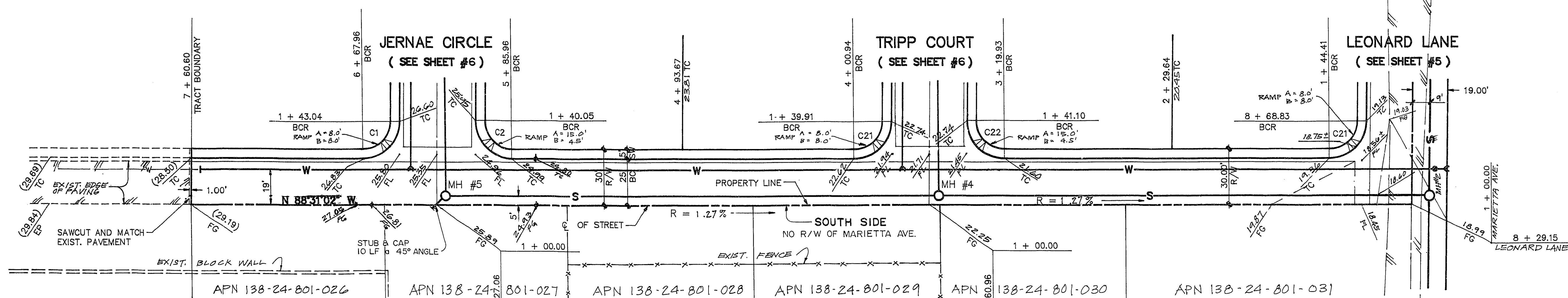
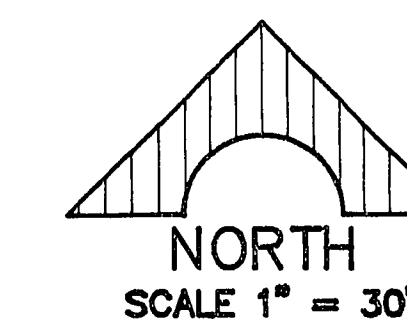


PROFILE

HORIZ.: 1" = 30'
VERT.: 1" = 3'



BCR CURVE DATA

CURVE	RADIUS	LENGTH	TANGENT	DELTA
C1	15.00'	24.12'	15.55'	92°51'
C2	15.00'	23.78'	15.22'	90°50'34"
C21	15.00'	23.34'	14.78'	89°38'
C22	15.00'	23.78'	15.22'	90°50'34"

MARIETTA AVENUE

NOTE:
THE NORTH HALF OF THE PROP.
SOUTH OF MARIETTA AVE. ARE UNDEVELOPED.
HOUSES FRONT ON VEGAS DRIVE.

REV.	DATE	DESCRIPTION

RECOMMENDED
STATE OF NEVADA
LEONARDO V. DELUNA
R.E. NO. 3784
DATE 8/21/95

DeLUNA, INC.
ENGINEERING • PLANNING • SURVEYING
7310 SMOKE RANCH ROAD, SUITE 1, LAS VEGAS, NEVADA 89108, (702) 285-8242

SHEET CONTENTS:
KAY L. DIXON PROPERTIES
DIXON ESTATES
MARIETTA AVENUE

SHEET
4
OF 7 SHEETS

1074-4432

9418

11-26-65