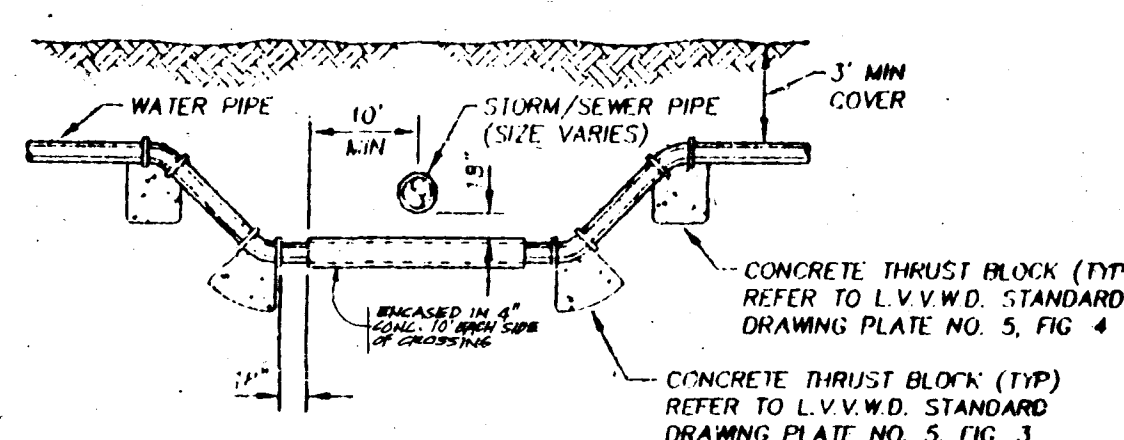


STORM / SEWER WATER CROSSING DETAIL



WHERE THE WATER LINE IS LESS THAN 18 INCHES OVER THE SEWER LINE, WHERE THE WATER LINE IS UNDER THE SEWER LINE, AND WHERE THE HORIZONTAL SEPARATION, AS REQUIRED BY THE WATER SUPPLY REGULATIONS, CANNOT BE MAINTAINED BECAUSE OF PHYSICAL OBSTRUCTIONS, THE WATER LINE SHALL BE PROTECTED BY CONSTRUCTION OF THE STORM/SEWER LINE AS FOLLOWS:

1. EXTRA HEAVY CAST IRON PIPE.
2. WATER SUPPLY QUALITY MATERIALS; OR
3. ENCASUREMENT WITH FOUR INCHES, MINIMUM, OF CONCRETE OR SLEEVING WITH WATER SUPPLY QUALITY PIPE.

EACH OF THESE PROVISIONS SHALL ALSO BE EXTENDED FOR OTHER THAN 90 DEGREE CROSSINGS TO THE POINT AT WHICH THE TEN FOOT SEPARATION BETWEEN THE WATER AND SEWER LINES IS ACHIEVED (10'/SINE OF CROSSING ANGLE).

BCR CURVE DATA

C21	15.00'	23.34'	14.78'	88°9'28"
C22	15.00'	23.78'	15.22'	90°50'34"

LEONARD LANE

MARIETTA AVE.
(SEE SHEET #4)

DeLUNA, INC.
ENGINEERING • PLANNING • SURVEYING
7310 SMOKE RANCH ROAD, SUITE T, LAS VEGAS, NEVADA 89108, (702) 255-6242

RECOMMENDED BY THE STATE OF NEVADA
LEONARDO V. DELUNA
REGISTERED PROFESSIONAL ENGINEER
NO. 42394
EXPIRES 12/31/97

RECOMMENDED BY THE STATE OF NEVADA
LEONARDO V. DELUNA
REGISTERED PROFESSIONAL SURVEYOR
NO. 3784
EXPIRES 12/31/95

DESCRIPTION
REVISED SEWER & WATER
STREET IMPROVEMENTS
10+00 TO 5+00

REV. DATE
10/12/97

DATE
8/31/95

P.L.E. NO.
3784

DATE
8/31/95

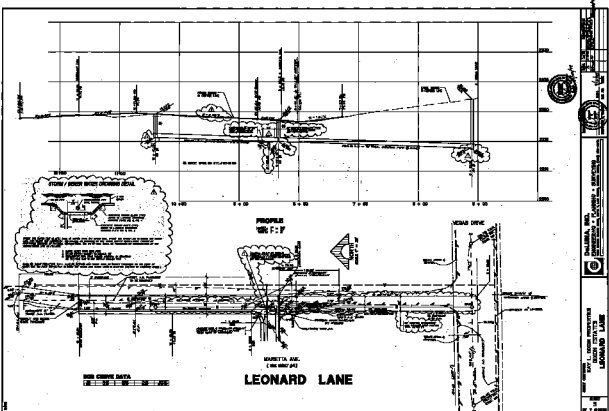
SHEET CONTENTS:
KAY L. DIXON PROPERTIES
DIXON ESTATES
LEONARD LANE

SHEET
5
OF 7 SHEETS

4994

11-26-67

101Y-4432



DALLAS, TEX.
 CIVIL ENGINEERING
 CONSULTING & ARCHITECTS
 1100 N. GUYTON ST.
 DALLAS, TEX. 75202
 PROJECT NO. 10-10-100
 SHEET NO. 10-10-100-1
 DATE: 10-10-100

RAY L. DAVIS, REGISTERED PROFESSIONAL ENGINEER
 NO. 10-10-100-1
 LEONARD LANE