

APPROVAL	DATE	BY	REVISION
1	2-28-91	LW	EXTD SEWER TO MH #11
2	3-4-91	D.A.	NAME REVISED TO DAVE BROWN WEST

ESI ENGINEERS & SURVEYORS, INC.
 REGISTERED PROFESSIONAL ENGINEERS
 STATE OF MISSISSIPPI
 LICENSE NO. 10680

DATE: 2/1/91
 SUBMITTED BY: [Signature]

STREET & SEWER PLAN & PROFILE
 (WEDLOCK LANE)

DAVE BROWN WEST UNIT 4
 (Also known as MOUNTAIN SHADOW ESTATES UNIT 4)

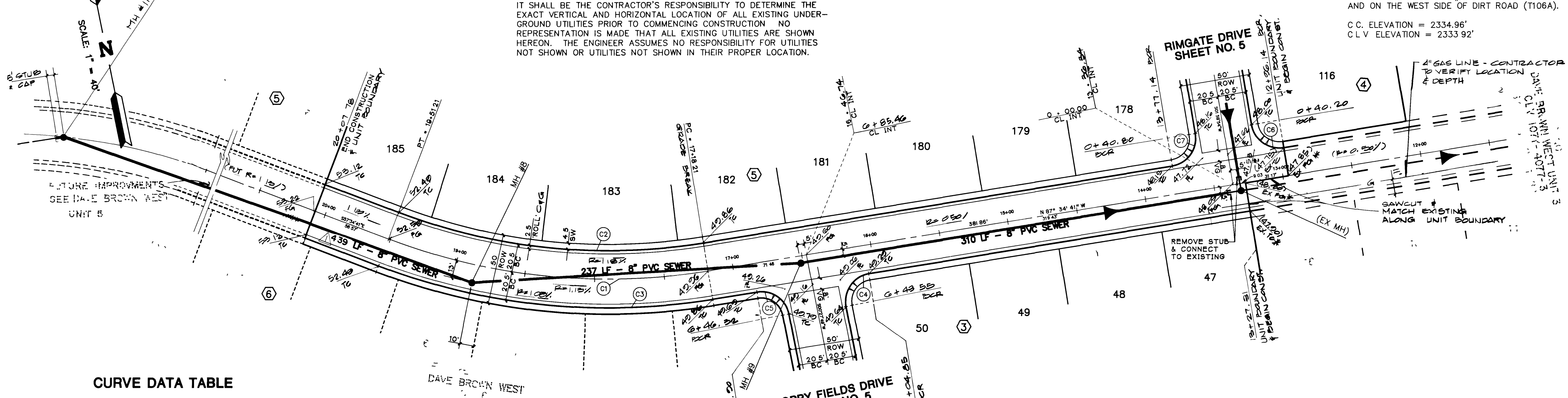
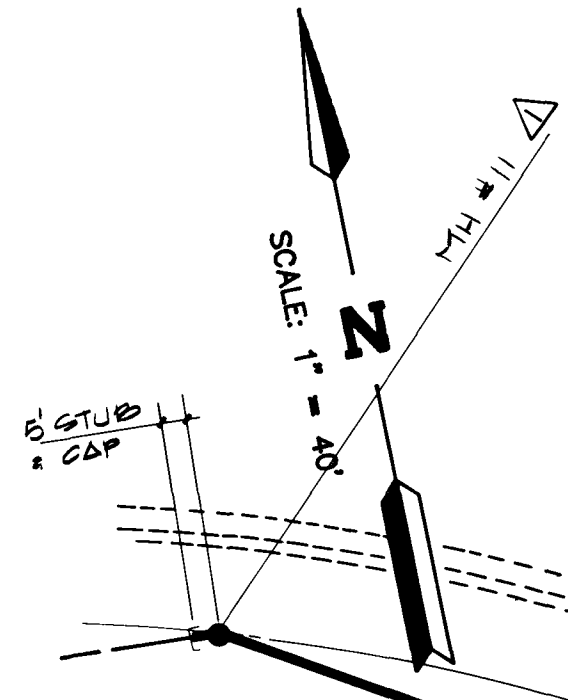
20+00 19 18 17 16 15+00 14 13 12

NOTE:

EXISTING UTILITY LOCATIONS SHOWN HEREIN ARE APPROXIMATE ONLY. IT SHALL BE THE CONTRACTOR'S RESPONSIBILITY TO DETERMINE THE EXACT VERTICAL AND HORIZONTAL LOCATION OF ALL EXISTING UNDERGROUND UTILITIES PRIOR TO COMMENCING CONSTRUCTION. NO REPRESENTATION IS MADE THAT ALL EXISTING UTILITIES ARE SHOWN HEREON. THE ENGINEER ASSUMES NO RESPONSIBILITY FOR UTILITIES NOT SHOWN OR UTILITIES NOT SHOWN IN THEIR PROPER LOCATION.

BENCHMARK

CLARK COUNTY BENCHMARK NO. C001001 RAILROAD SPIKE ON THE EAST SIDE OF P.P. #62837. POWER LINE RUNS NORTH/SOUTH AND ON THE WEST SIDE OF DIRT ROAD (T106A).
 C.C. ELEVATION = 2334.96'
 C.L.V. ELEVATION = 2333.92'



CURVE DATA TABLE

No.	RADIUS	DELTA	LENGTH	TANGENT
C1	445.00'	30°00'00"	233.00'	119.24'
C2	424.50'	30°00'00"	222.27'	113.74'
C3	465.50'	30°00'00"	243.74'	124.73'
C4	20.00'	91°57'30"	32.10'	20.70'
C5	20.00'	88°02'30"	30.73'	19.33'
C6	20.00'	89°34'35"	31.27'	19.85'
C7	20.00'	90°25'25"	31.56'	20.15'

REFERENCE NOTE

ALL IMPROVEMENTS SHOWN HEREON SHALL BE REFERENCED TO THE OVERALL ROUGH GRADING PLAN ENTITLED, 'DAVE BROWN WEST', APPROVED ON 6-18-89.
 CLV #107Y-4077

QUANTITY ESTIMATE

2" ASPHALTIC CONCRETE	2,784 SY
30" ROLL TYPE CURB & GUTTER	1,244 LF
CONCRETE SIDEWALK	5,535 SF

THESE QUANTITIES ARE ONLY ESTIMATES, CONTRACTOR TO VERIFY.

Call before you Dig
 1-800-227-2600
 UNDERGROUND SERVICE (USA)

WO #:	5263
BY:	AMB
DATE:	JAN 1991
SCALE:	VERT. 1"=4' HORIZ. 1"=40'
SHEET:	4
OF 9 SHEETS	

6449

107Y-4077-4

