

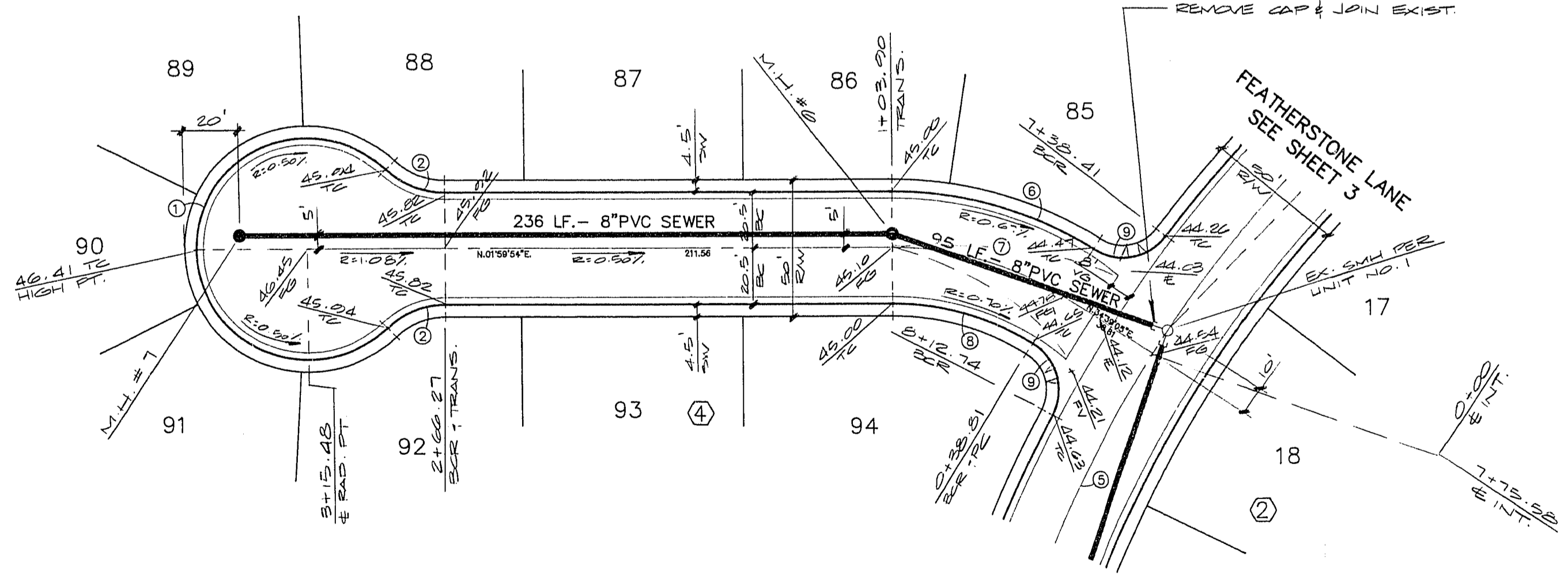
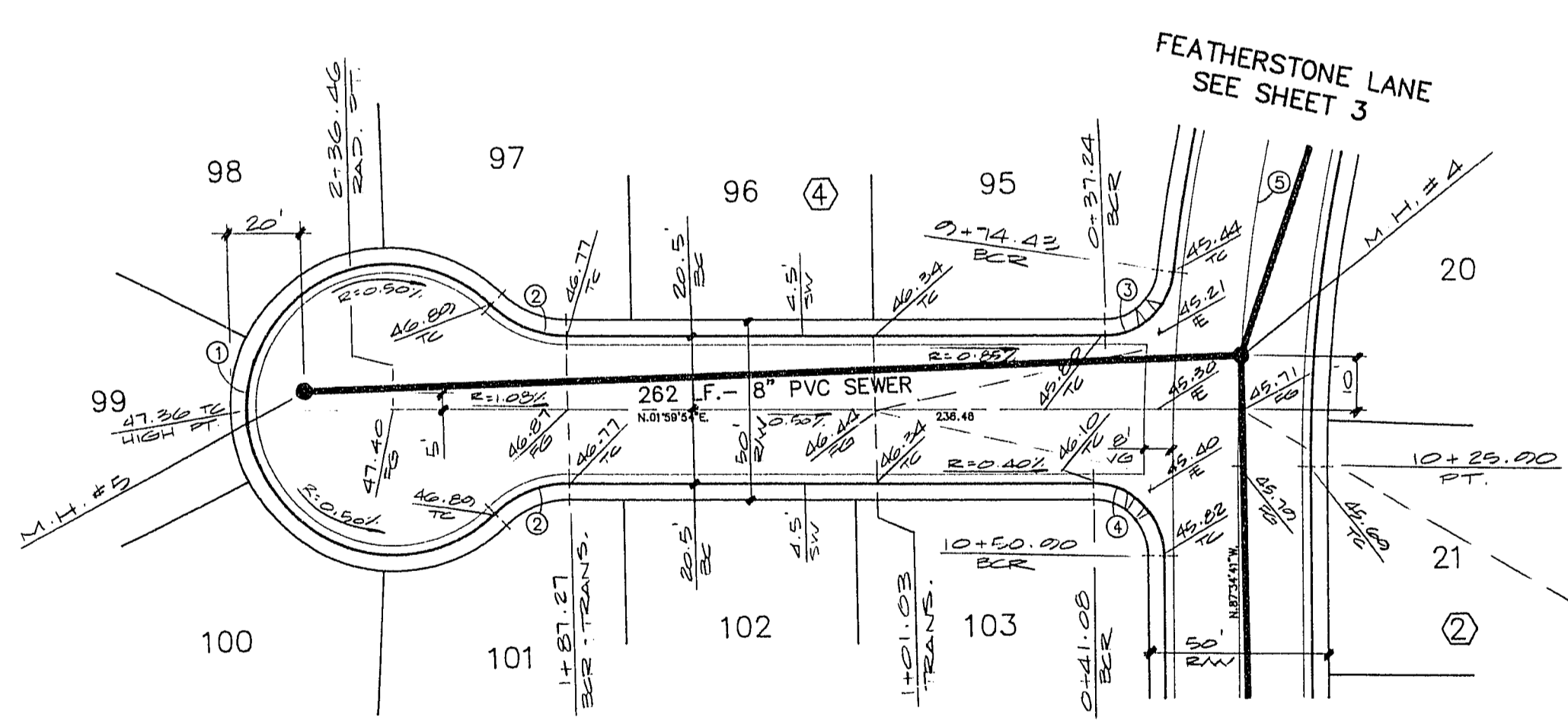
REV	DATE	BY	REVISION
1	6-26-89	TB	REV SEWER EXIST STUD LENGTHS

ESI ENGINEERS & SURVEYORS INC.
 701 W. CHATELAIN BLVD. LAS VEGAS, NEVADA 89101 (702) 733-1415
 SUBMITTED BY: *Paul E. Valentine*
 PAUL E. VALENTINE
 CIVIL ENGINEER

SCALE: 1" = 40'

SCALE: 1" = 40'

BENCHMARK
 CLARK COUNTY BENCHMARK NO. 0001001 RAILROAD SPIKE ON EAST SIDE OF P.P. #62837. POWER LINE RUNS NORTH/SOUTH AND ON THE WEST SIDE OF DIRT ROAD (T106A).
 C.C. ELEVATION: 2334.86'
 C.L.V. ELEVATION: 2333.92'



CURVE DATA TABLE

CURVE	RADIUS	LENGTH	TANGENT	DELTA
1	40.50'	189.79'	---	268°29'54"
2	30.00'	23.17'	12.20'	44°14'57"
3	20.00'	28.95'	17.68'	82°56'59"
4	20.00'	31.56'	20.15'	90°25'25"
5	445.00'	345.40'	181.93'	44°28'18"
6	134.71'	76.77'	39.46'	32°39'11"
7	114.21'	65.09'	33.46'	32°39'11"
8	93.71'	53.41'	27.45'	32°39'11"
9	20.00'	29.75'	18.40'	85°12'54"

SCOTMIST COURT

SNOW PETAL COURT

QUANTITY ESTIMATE

2.0" ASPHALTIC CONCRETE PAVING ----- 2,728 S.F.
 30" ROLL" TYPE CURB & GUTTER ----- 1,218 L.F.
 CONCRETE VALLEY GUTTER ----- 1,264 S.F.
 CONCRETE SIDEWALK ----- 6,022 S.F.

THESE QUANTITIES ARE ONLY ESTIMATES, CONTRACTOR TO VERIFY

Call before you Dig.
 1-800-227-2600
 UNDERGROUND SERVICE (USA)

TITLE: STREET & SEWER PLAN & PROFILE
 (SCOTMIST COURT & SNOW PETAL COURT)
 PROJECT: DAVE BROWN WEST UNIT NO.2

WO NO.	5261
BY	P. CHAO
DATE	12/88
SCALE	HORIZ. 1" = 40' VERT. 1" = 4'

SHEET
5
 OF 8 SHEETS