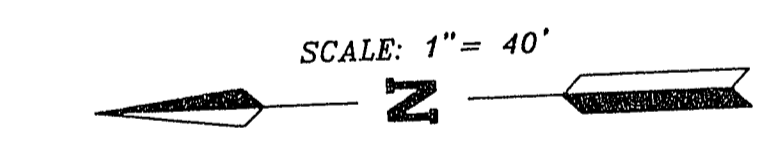


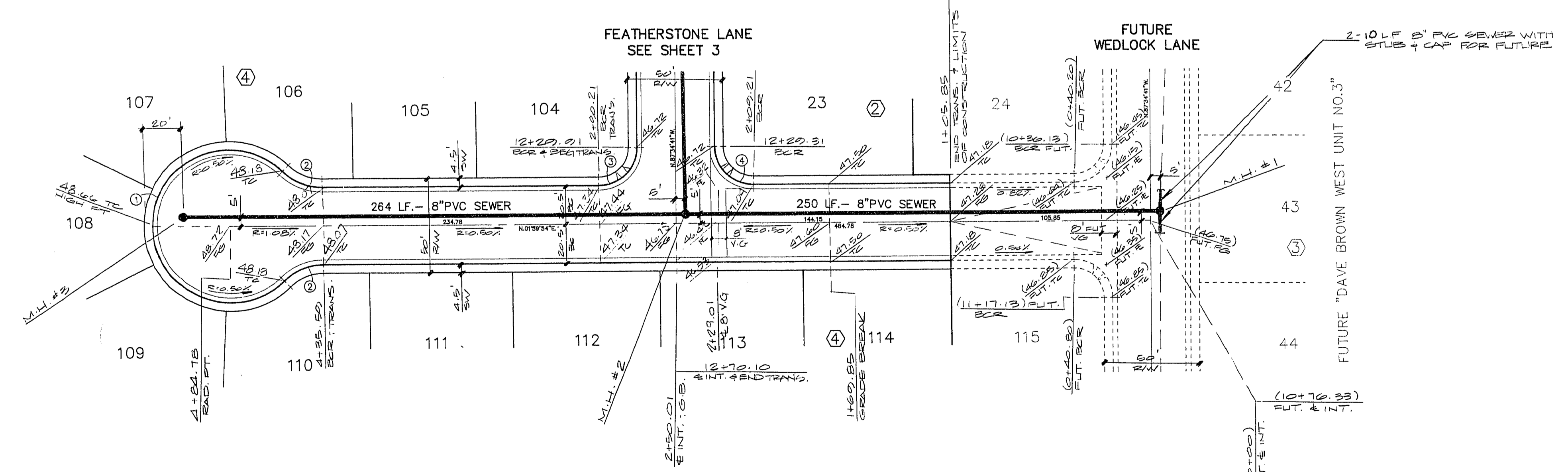
REV	DATE	BY	REVISION
1	6-26-89	TB	REV. STUD LENGTHS PER C.V.
2	12-28-90	PS	REV. GRADES & ADD S.V. & E.S.V.

ES/ENGINEERS & SURVEYORS INC.
 701 W. GARDEN DR. SUITE 100
 CLARK COUNTY, NC 28601
 SUBMITTED BY: PAUL VALENTINE CIVIL

5+00 4 3 2 1 0+00



BENCHMARK
 CLARK COUNTY BENCHMARK NO. C001001 RAILROAD SPIKE ON EAST SIDE OF P.H. #R2337 POWER LINE RUNS NORTH/SOUTH AND ON THE WEST SIDE OF DIRT ROAD (1106A).
 C.C. ELEVATION: 2334.96'
 C.L.V. ELEVATION: 2333.92'



CURVE DATA TABLE

CURVE	RADIUS	LENGTH	TANGENT	DELTA
1	40.50'	189.79'	---	268°29'54"
2	30.00'	23.17'	12.20'	44°14'57"
3	20.00'	31.27'	19.85'	89°34'35"
4	20.00'	31.56'	20.15'	80°25'25"

TEA GARDEN DRIVE

Call before you Dig.
 1-800-227-2600
 UNDERGROUND SERVICE LOC.

QUANTITY ESTIMATE
 2.0" ASPHALTIC CONCRETE PAVING ——— 1,880 S.Y.
 30" "ROLL" TYPE CURB & GUTTER ——— 815 L.F.
 CONCRETE SIDEWALK ——— 3,698 S.F.

THESE QUANTITIES ARE ONLY ESTIMATES, CONTRACTOR TO VERIFY

TITLE: STREET & SEWER PLAN & PROFILE
 (TEA GARDEN DRIVE)
 PROJECT: DAVE BROWN WEST UNIT NO.2

WO NO.	5261
BY	P. CHAO
DATE	12/88
SCALE	HORIZ. 1" = 40' VERT. 1" = 4'

SHEET
4
 OF 8 SHEETS