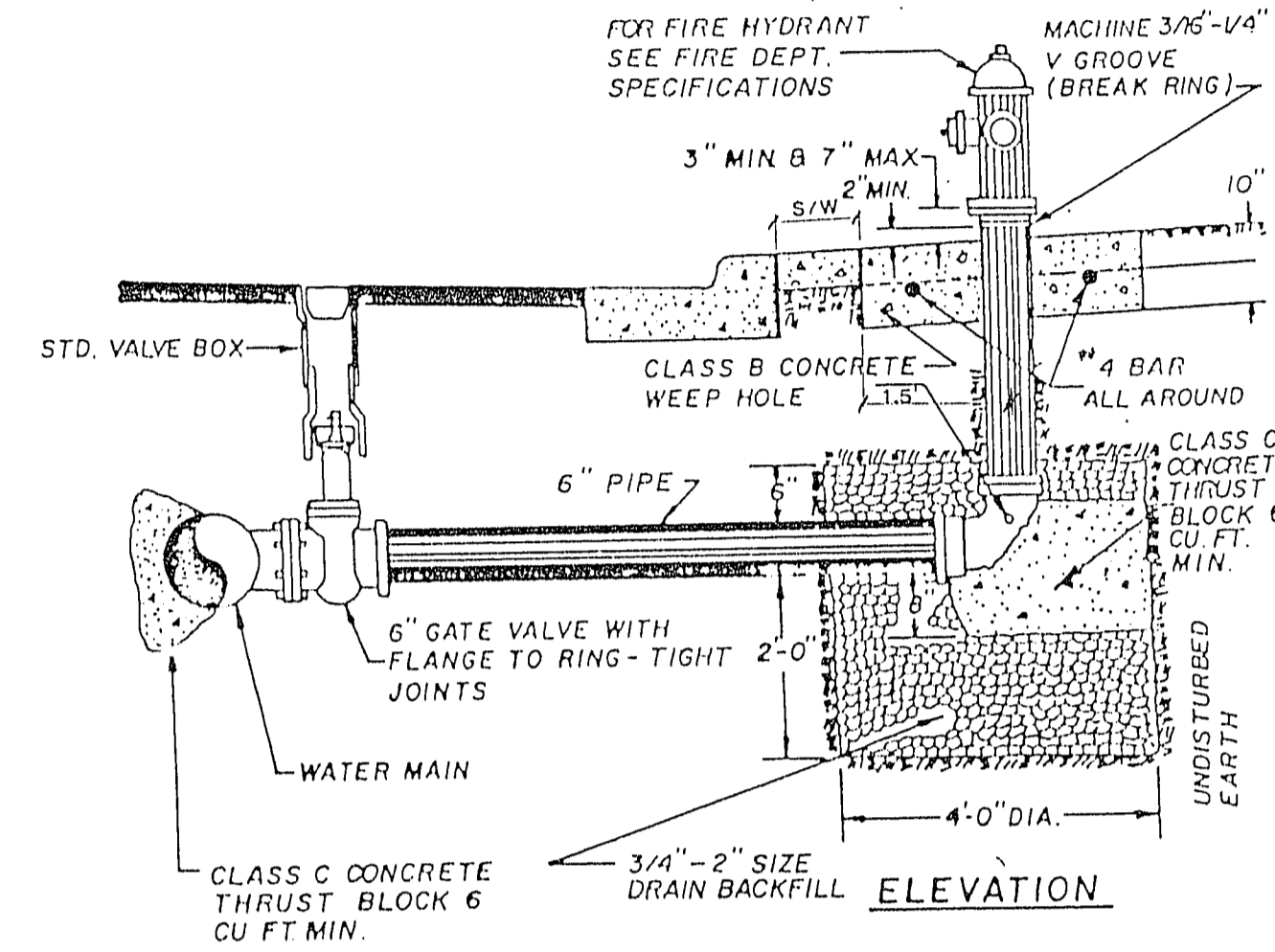
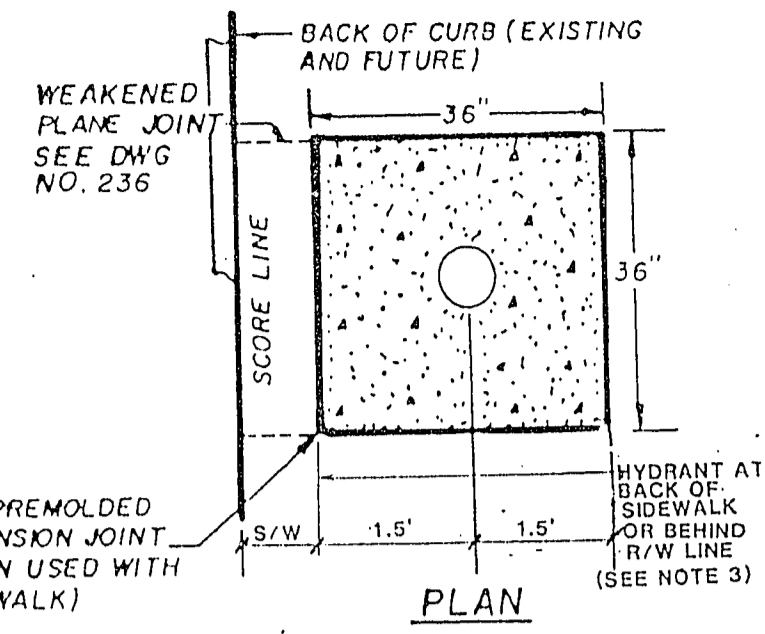


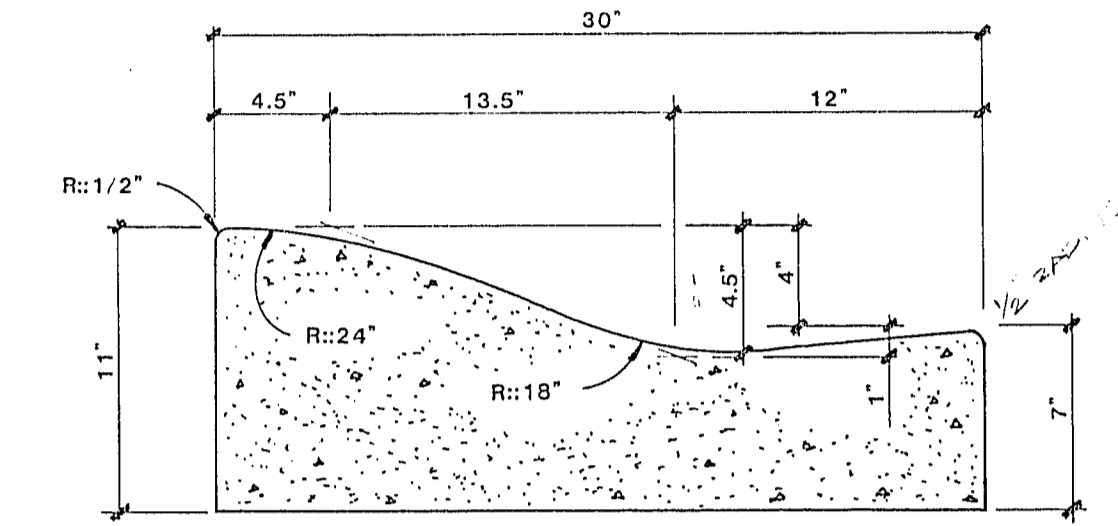
NOTES:

1. NO HYDRANT SHALL BE LOCATED WITHIN 15' OF ANY DRIVEWAY, 6' OF POWER POLE, LIGHT STANDARD, OR ANY OTHER OBSTRUCTION.
2. IF HYDRANT IS TO BE INSTALLED IN AN EXISTING SIDEWALK, A FULL PANEL OF THE SIDEWALK SHALL BE REMOVED AND REPLACED AFTER INSTALLATION OF THE HYDRANT.
3. WHEN R/W AND FIELD CONDITIONS PERMIT THE FIRE HYDRANT SHALL BE PLACED BEHIND THE SIDEWALK.

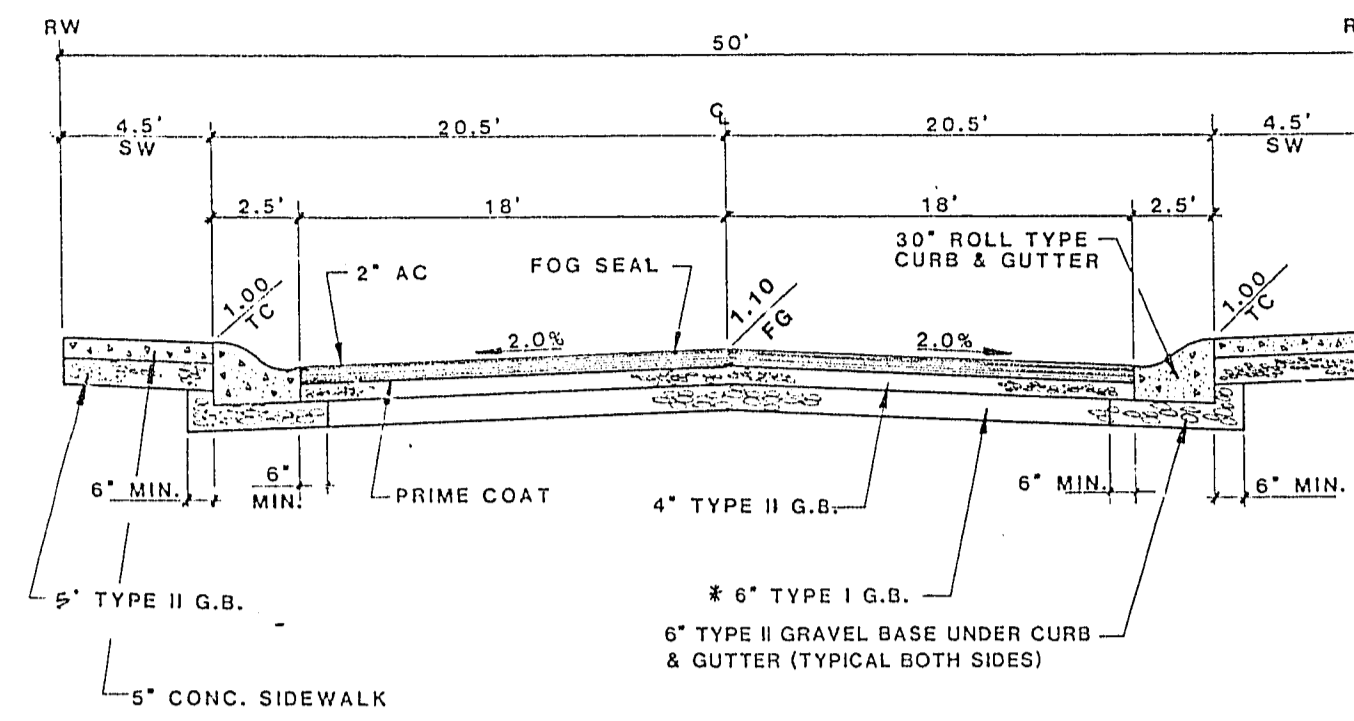


CLV. STD. DWG. #516

TYPICAL FIRE HYDRANT DETAIL



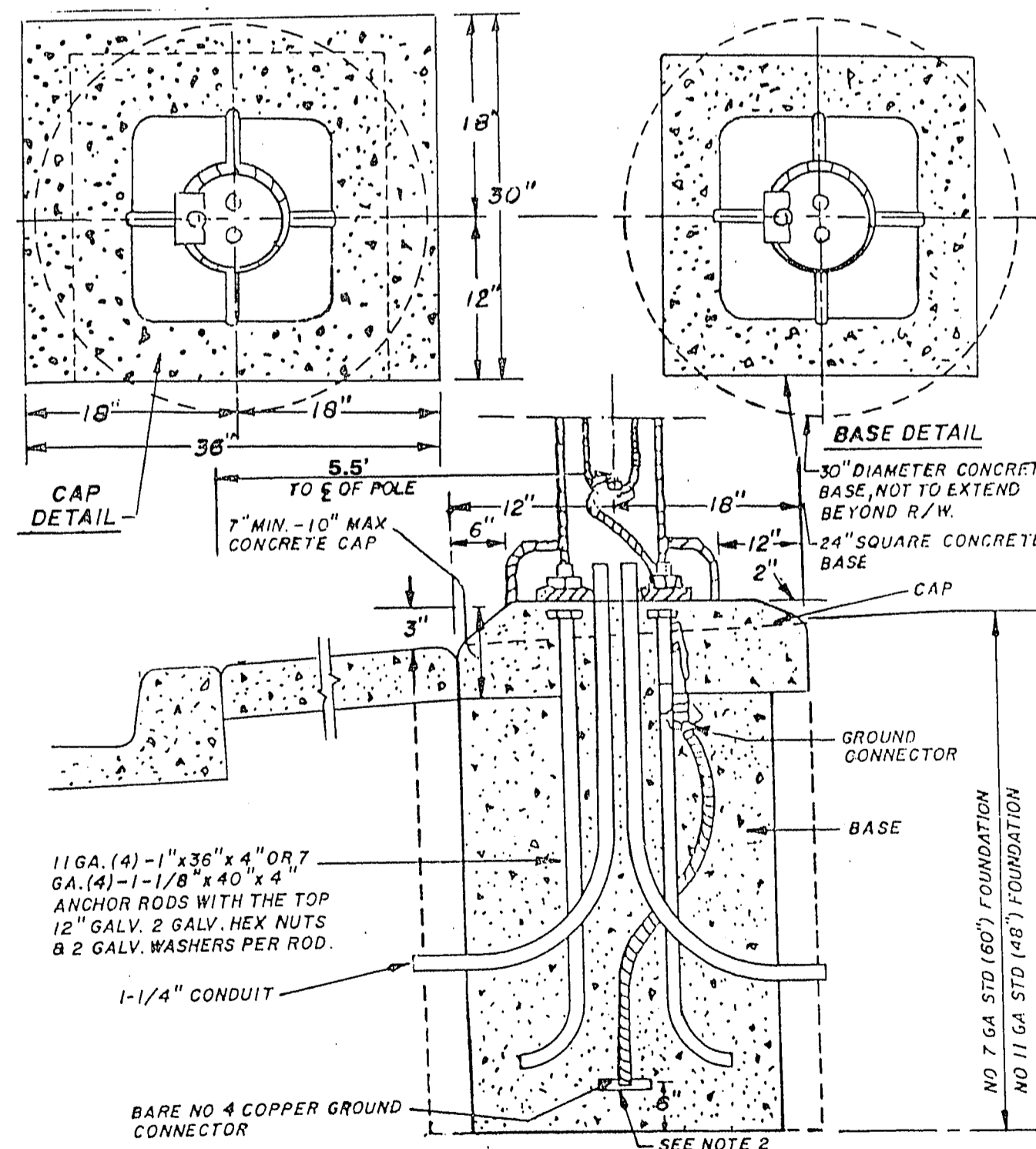
30" "ROLL" TYPE CURB & GUTTER



- * 1. NATIVE MATERIAL TO BE PROCESSED IN ACCORDANCE WITH CLV "STATEMENT OF POLICY FOR USE OF NATIVE MATERIAL IN LIEU OF IMPROVED TYPE I BASE FOR DESIGNATED CITY STREETS" DATED MAY 31, 1984.
2. 6" MINIMUM TYPE I OR TYPE II GRAVEL BASE UNDER CURB AND GUTTER.
3. A.C. INWEIGHT TO BE 1/2" (MIN.) ABOVE LIP OF GUTTER AFTER COMPACTION.

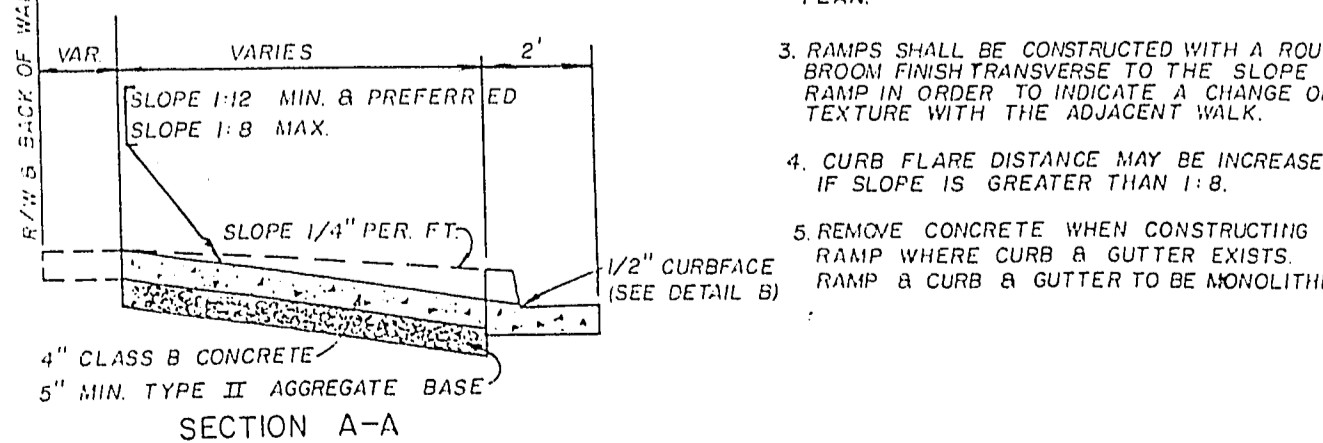
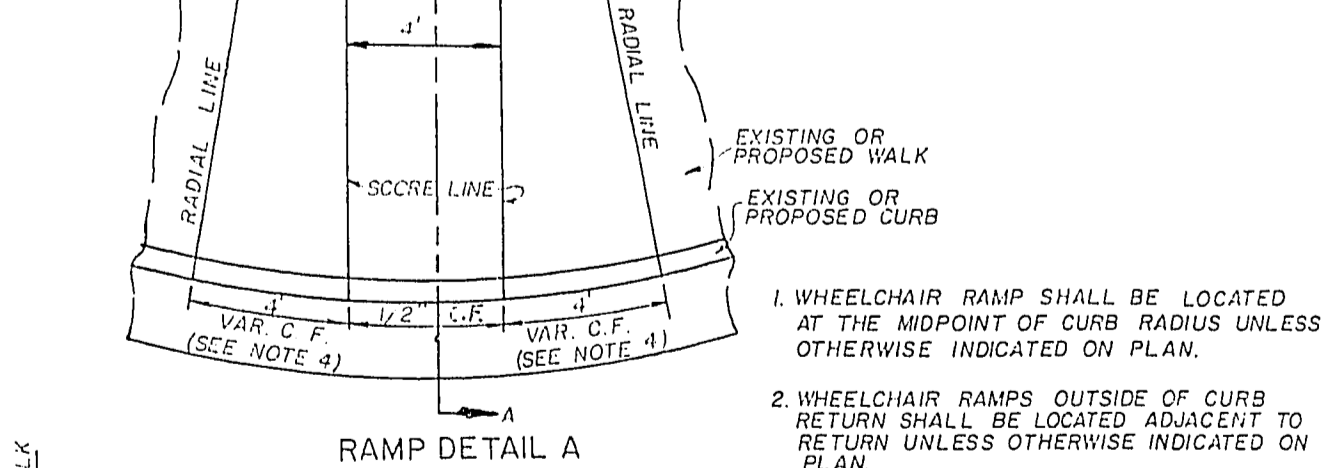
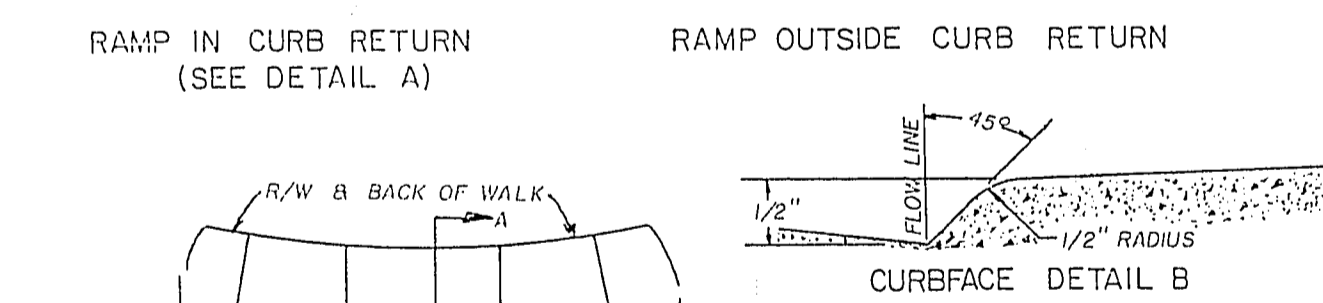
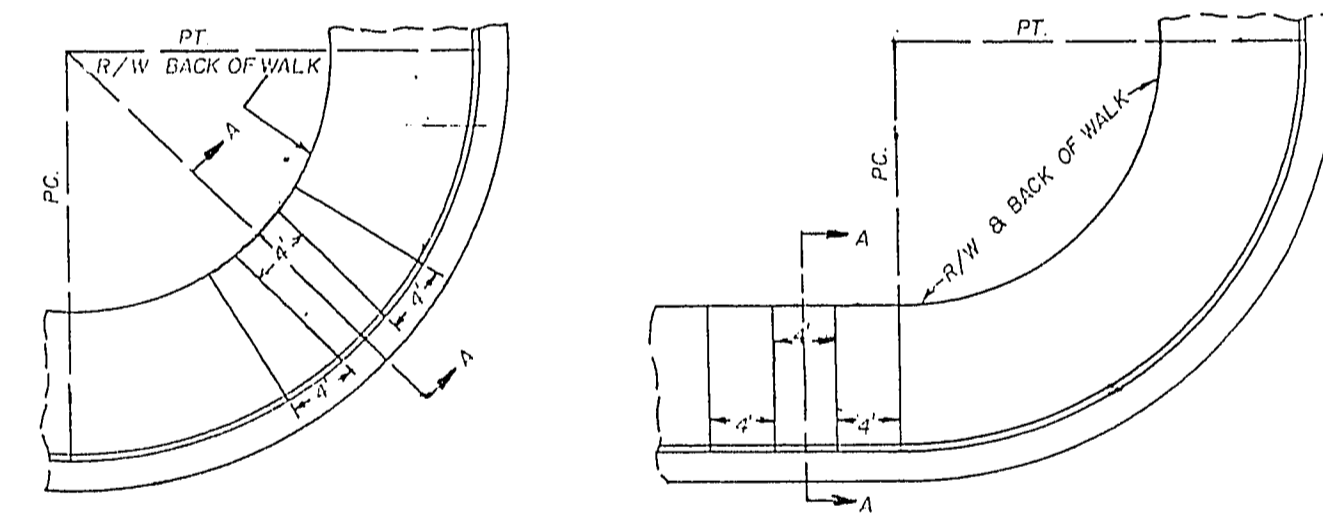
TYPICAL 50' STREET SECTION

(INTERIOR STREETS)



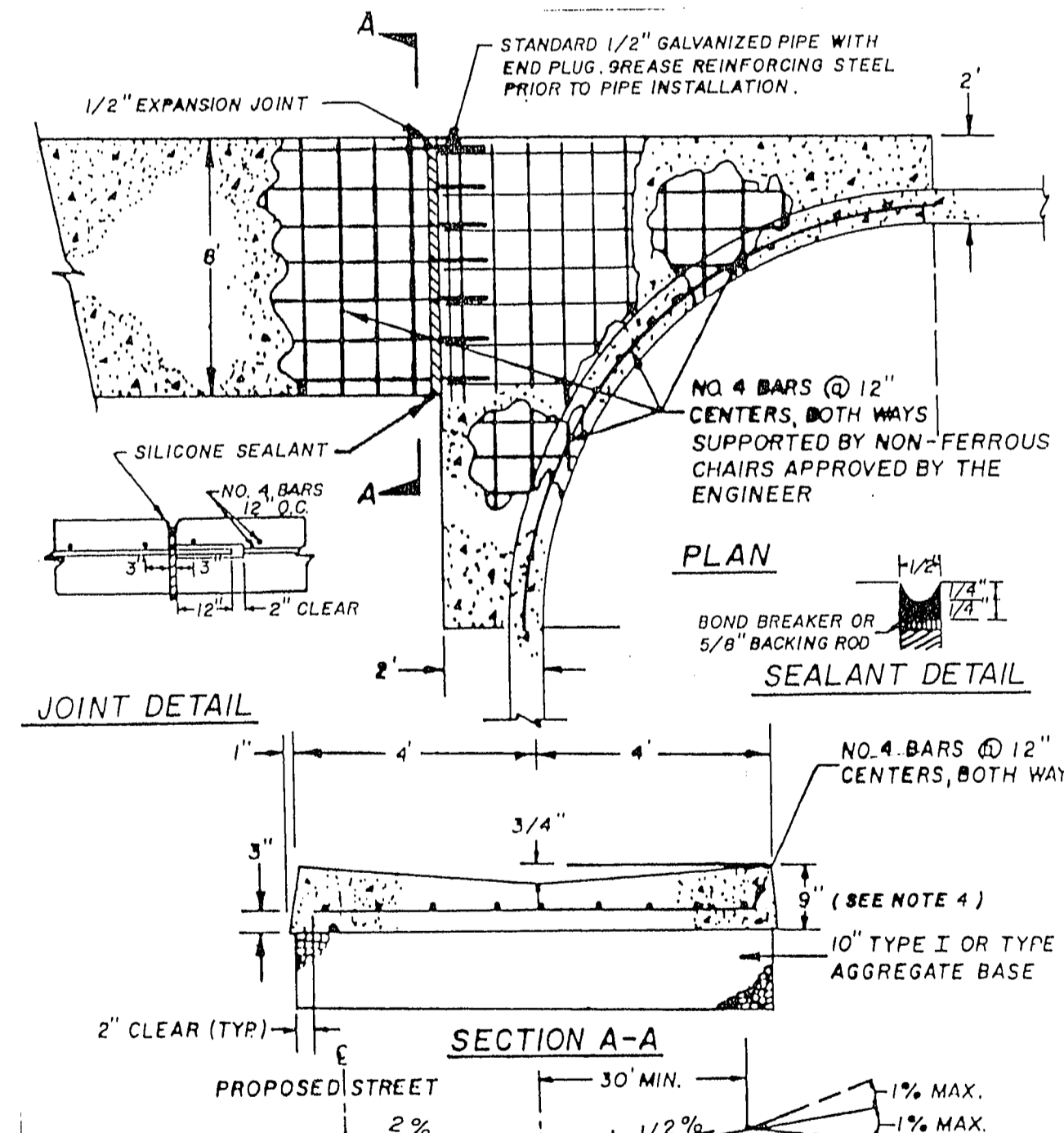
CLV. STD. DWG. #319

TYPICAL STREET LIGHT DETAIL



CLV. STD. DWG. #235

TYPICAL WHEELCHAIR RAMP DETAIL



TYPICAL PROFILE AT LOCAL RESIDENTIAL STREET INTERSECTIONS

1. ALL CONCRETE SHALL BE CLASS B.
2. FINISHED ASPHALT CONCRETE SURFACE TO BE FLUSH WITH CROSS GUTTER LIP.
3. CONSTRUCTION OF CROSS GUTTER IS NOT ALLOWED ACROSS MAJOR COLLECTOR OR ARTERIAL STREETS.
4. ADJACENT SPANDREL SHALL BE 8" THICK P.C.C.

CLV. STD. DWG. #228

TYPICAL VALLEY GUTTER DETAIL

REV	DATE	BY	REVISION
1	1-11-83	DES	ADD 1/2" GALV. PIPE TO ST. SECTION
2	6-26-89	TB	REVISED STREET LIGHT FIRE HYDRANT DETAILS AND CLV STANDARD, DWG. #5

ESI ENGINEERS & SURVEYORS INC.
 100 B. CHARLESTON BLVD. SUITE 200
 CHARLOTTE, N.C. 28202
 (704) 375-1111

REGISTERED PROFESSIONAL ENGINEER
 STATE OF NORTH CAROLINA
 NO. 10117
 CIVIL

SUBMITTED BY: *[Signature]*

DETAIL SHEET

DAVE BROWN WEST UNIT NO.2

Call before you Dig.
 1-800-227-2600
 (N.C. PROFESSIONAL SERVICE #10)

WO NO.	5281
BY	P B
DATE	12/88
SCALE	NONE

SHEET	2
OF 8 SHEETS	