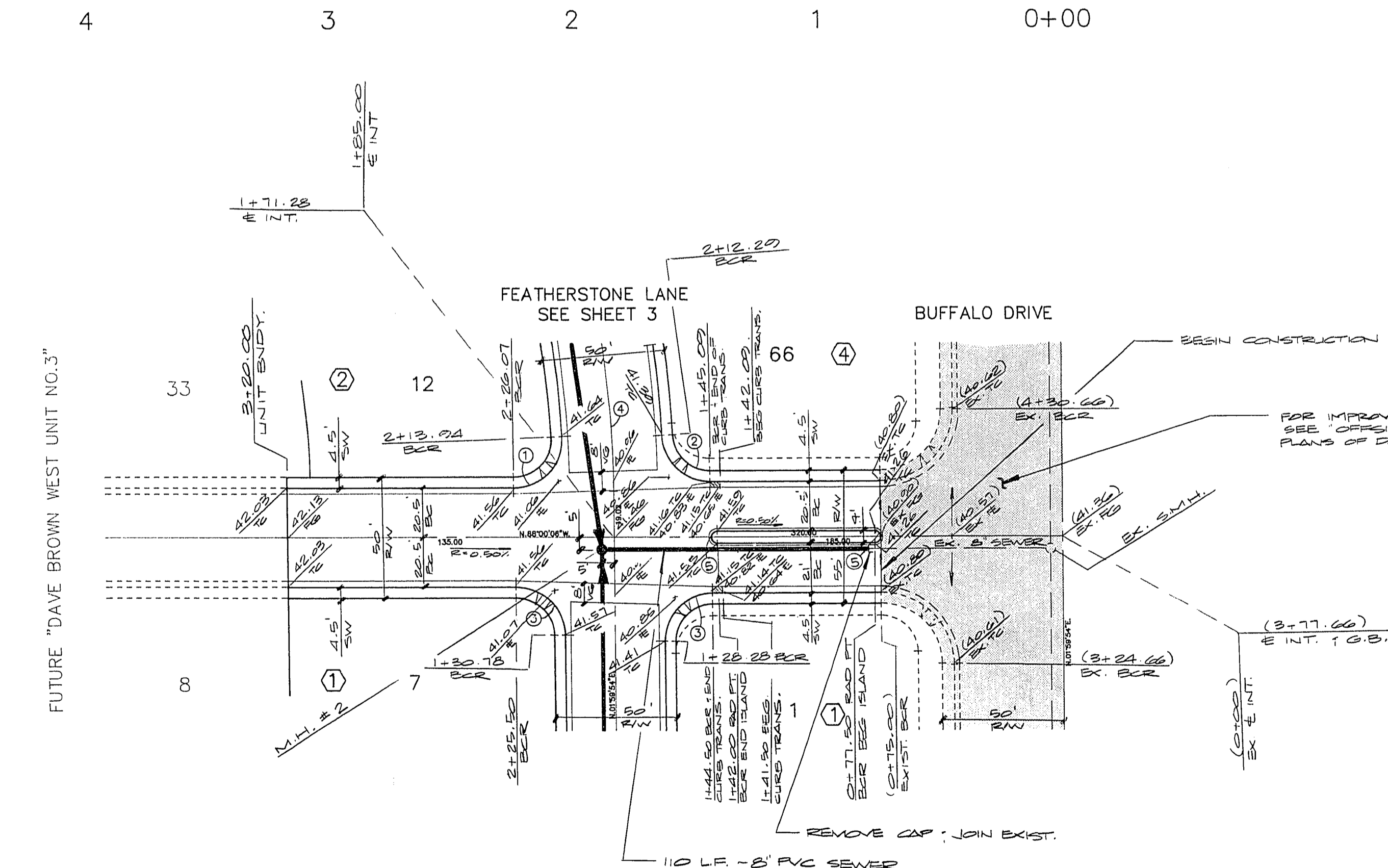
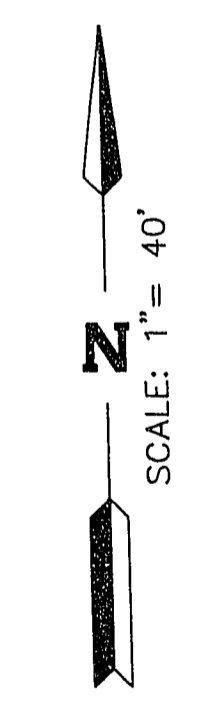


REV	DATE	BY	REVISION
1	1-11-09	DS	REVISED PER TABLE, T.C. NOTED

**ESI ENGINEERS & SURVEYORS INC.**  
 701 B.W. EXCALIBUR BLVD. SUITE 117-702, BUFFALO, NY 14203  
 TEL: 716-634-1100 FAX: 716-634-1101  
 SUBMITTED BY: PAUL L. VALARTINE  
 DATE: 1/29/09



**BENCHMARK**  
 CLARK COUNTY BENCHMARK NO. C001001 RAILROAD SPIKE ON EAST SIDE OF P.P. #2837, POWER LINE RUNS NORTH/SOUTH AND ON THE WEST SIDE OF DIRT ROAD (T106A).  
 ELEVATION: 2334.96'  
 (C.C. DATUM -1.04' = C.L.V. DATUM)

**CURVE DATA TABLE**

CURVE	RADIUS	LENGTH	TANGENT	DELTA
1	20.00'	32.48'	21.08'	93°02'38"
2	20.00'	30.43'	19.04'	87°10'08"
3	20.00'	31.42'	20.00'	90°00'00"
4	445.00'	350.31'	184.80'	45°08'17"
5	2.00'	6.28'	---	180°00'00"

**EXCALIBUR AVENUE**

**QUANTITY ESTIMATE**

2.0" ASPHALTIC CONCRETE PAVING	567 S.F.
30" ROLL TYPE CURB & GUTTER	188 L.F.
"L" TYPE CURB & GUTTER	140 L.F.
"A" TYPE CURB & GUTTER	145 L.F.
CONCRETE SIDEWALK	1,476 S.F.

NOTE: THESE QUANTITIES ARE ONLY ESTIMATES, CONTRACTOR TO VERIFY.



**TITLE**  
 STREET & SEWER PLAN & PROFILE  
 (EXCALIBUR AVENUE)

**PROJECT**  
 DAVE BROWN WEST UNIT NO.1

WO NO.	5260
BY	P. CHAO
DATE	11/88
SCALE	HORIZ. 1" = 40' VERT. 1" = 4'

**SHEET**  
 5  
 OF 8 SHEETS

1074-4077-1