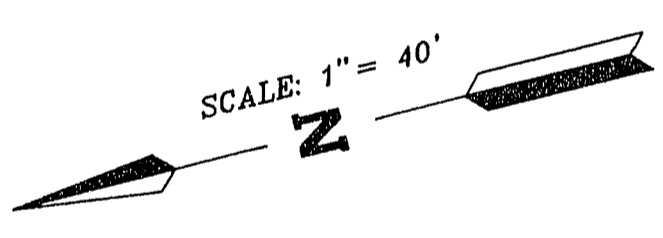


6 5+00 4 3 2 1 0+00

REV	DATE	BY	REVISION
1	11-11-88	DCS	REV TO PLAN

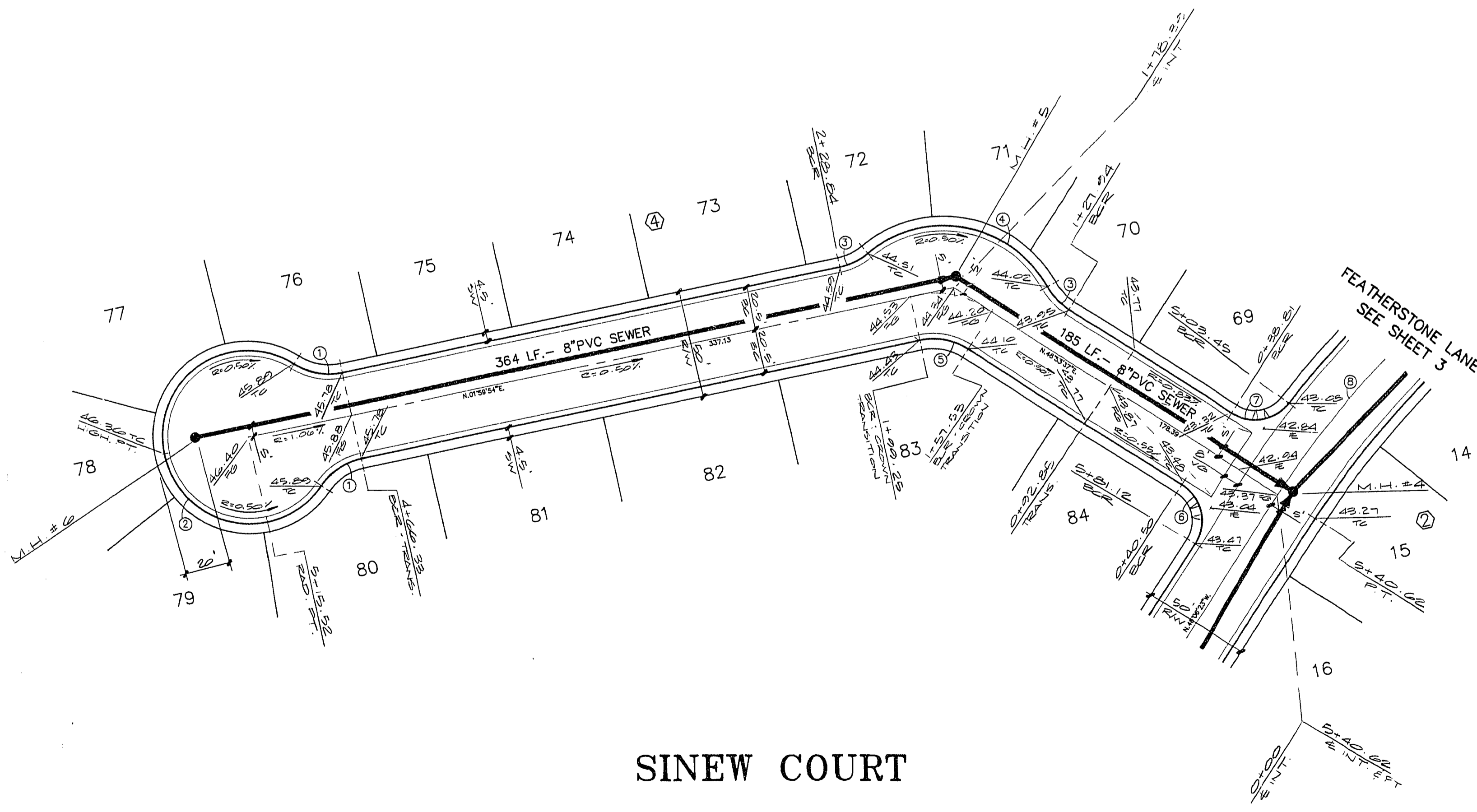
ESI ENGINEERS & SURVEYORS INC.
 701 B.K. CHANDLER BLVD. SUITE 117-002, BOCA RATON, FL 33433
 (561) 991-1100

SUBMITTED BY: *Valentine Chivuk* 11/11/88



CURVE DATA TABLE

CURVE	RADIUS	LENGTH	TANGENT	DELTA
1	30.00'	23.17'	12.20'	44°14'57"
2	40.50'	189.79'	---	268°29'54"
3	30.00'	14.65'	7.48'	27°59'19"
4	55.50'	97.71'	67.17'	100°52'21"
5	30.00'	23.51'	12.39'	44°53'43"
6	20.00'	31.42'	20.00'	90°00'00"
7	20.00'	29.75'	18.40'	85°12'54"
8	445.00'	350.31'	184.80'	45°06'17"



SINEW COURT

BENCHMARK
 CLARK COUNTY BENCHMARK NO. C001001 RAILROAD SPIKE ON EAST SIDE OF P.P. #82837. POWER LINE RUNS NORTH/SOUTH AND ON THE WEST SIDE OF DIRT ROAD (T106A).
 ELEVATION: 2334.98'
 (C.C. DATUM -1.04' = C.L.V. DATUM)

Call before you Dig.
 1-800-227-2609
 UNDERGROUND SERVICE INC.

QUANTITY ESTIMATE

2.0" ASPHALTIC CONCRETE PAVING ----- 2,411 S.Y.
 30" ROLL TYPE CURB & GUTTER ----- 1,097 L.F.
 CONCRETE VALLEY GUTTER ----- 652 S.F.
 CONCRETE SIDEWALK ----- 5,214 S.F.

NOTE: THESE QUANTITIES ARE ONLY ESTIMATES, CONTRACTOR TO VERIFY.

TITLE: STREET & SEWER PLAN & PROFILE (SINEW COURT)
 PROJECT: DAVE BROWN WEST UNIT NO.1

WO NO.	5260
BY	P. CHAO
DATE	11/88
SCALE	HORIZ. 1" = 40' VERT. 1" = 4'

SHEET **4**
 OF 8 SHEETS