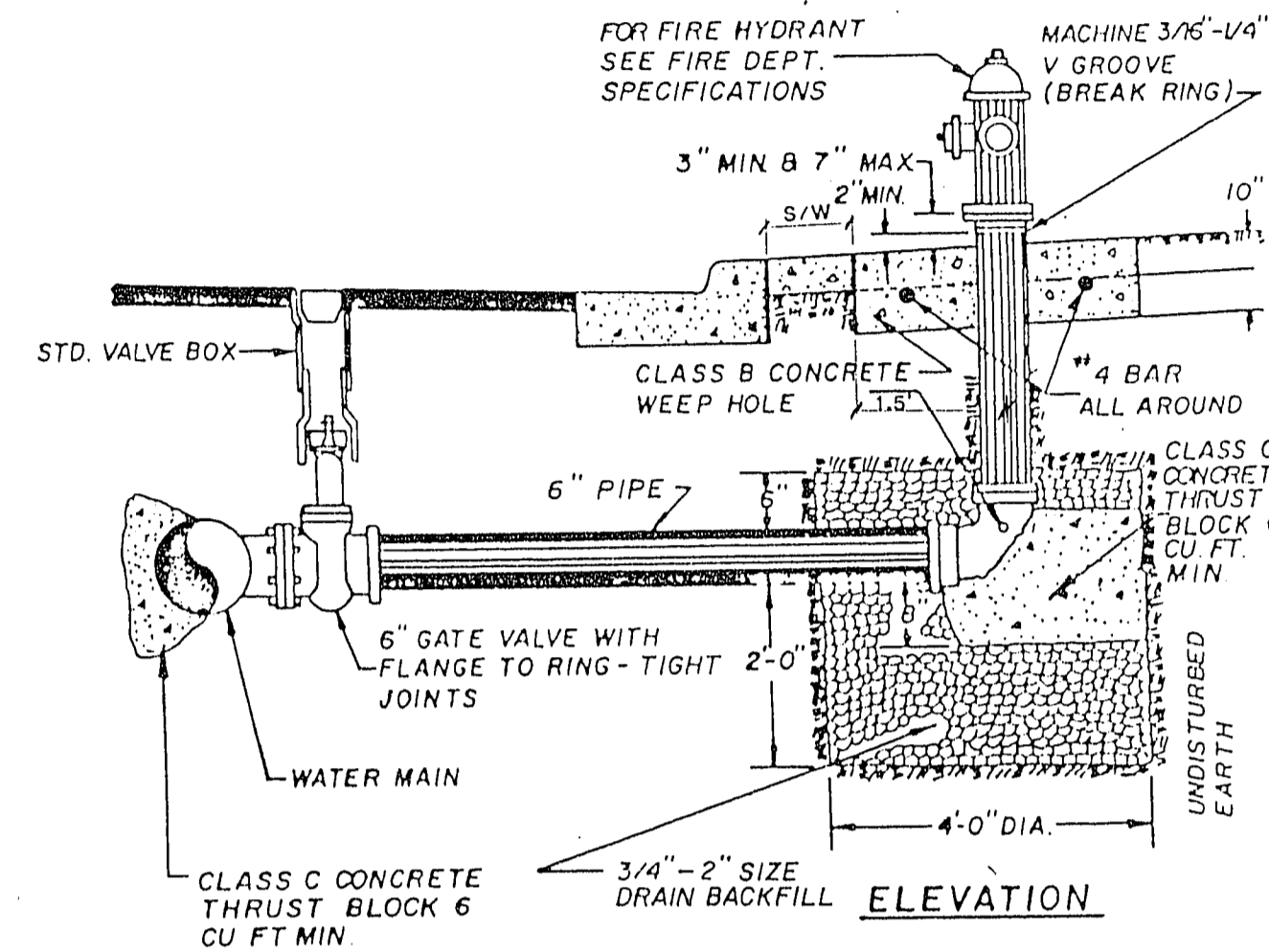
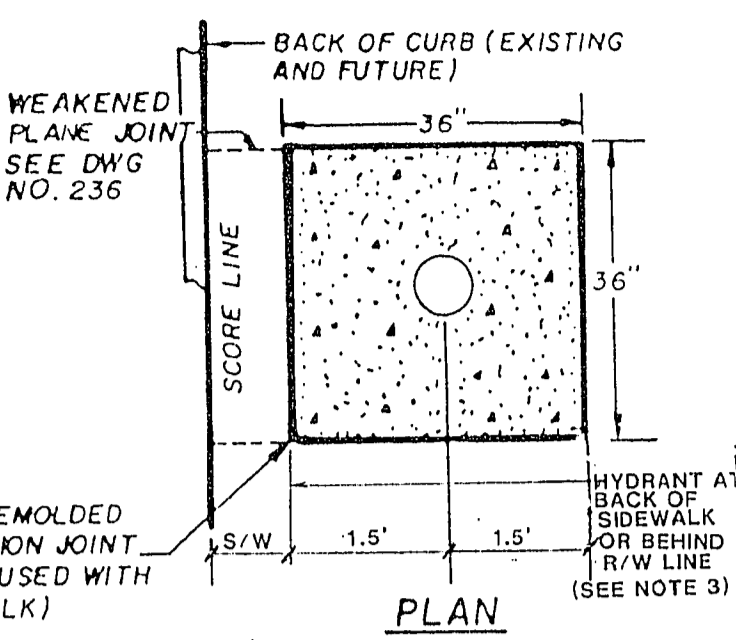
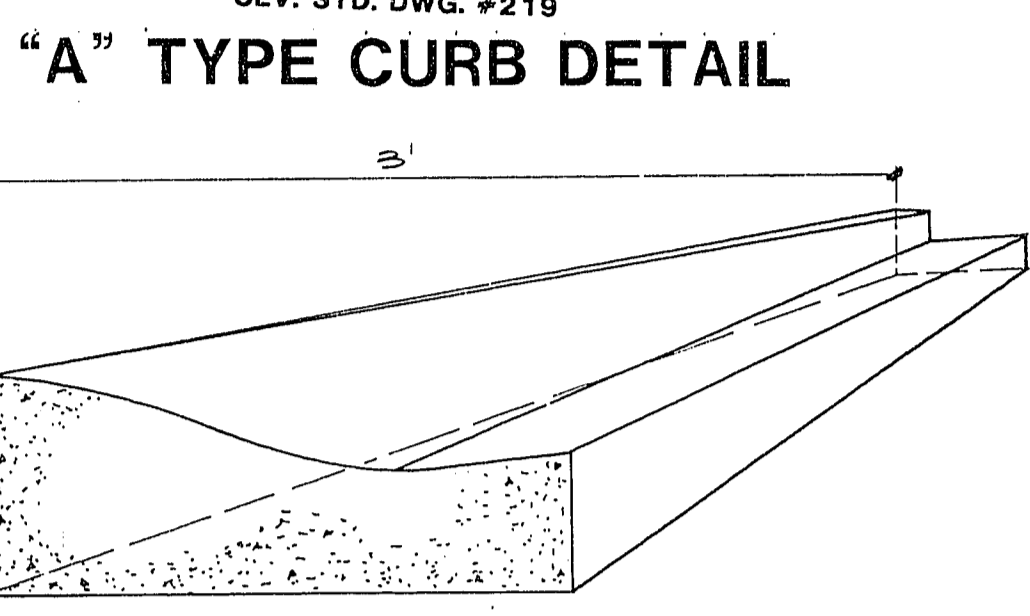
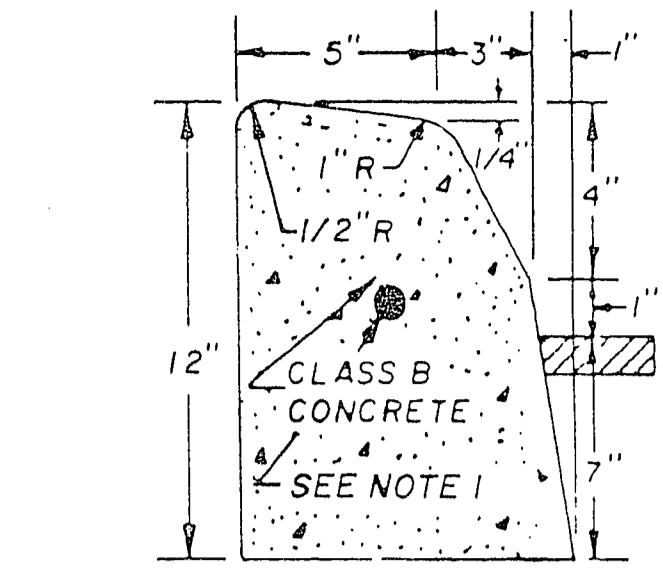


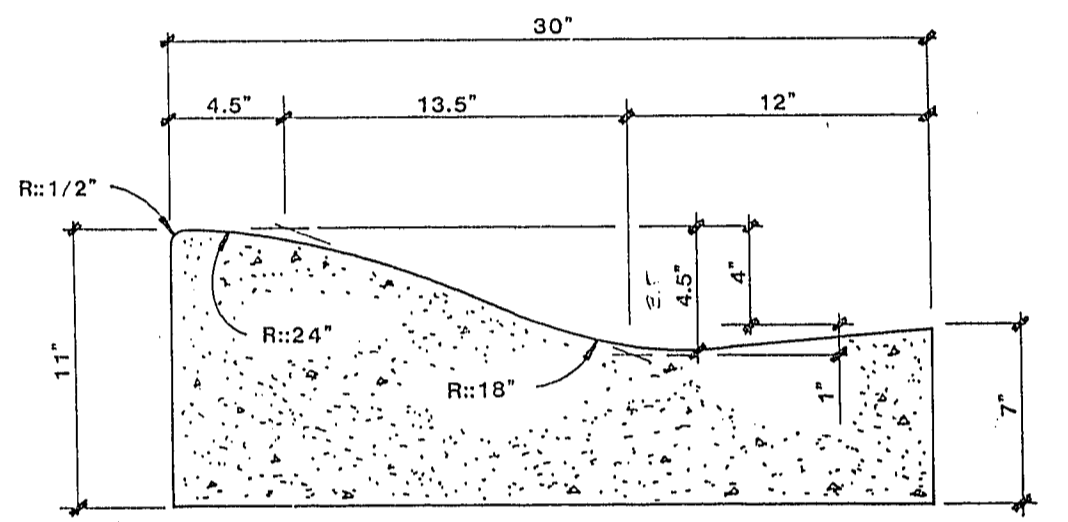
- NOTES:**
1. NO HYDRANT SHALL BE LOCATED WITHIN 15' OF ANY DRIVEWAY, 6' OF POWER POLE, LIGHT STANDARD, OR ANY OTHER OBSTRUCTION.
  2. IF HYDRANT IS TO BE INSTALLED IN AN EXISTING SIDEWALK, A FULL PANEL OF THE SIDEWALK SHALL BE REMOVED AND REPLACED AFTER INSTALLATION OF THE HYDRANT.
  3. WHEN R/W AND FIELD CONDITIONS PERMIT THE FIRE HYDRANT SHALL BE PLACED BEHIND THE SIDEWALK.



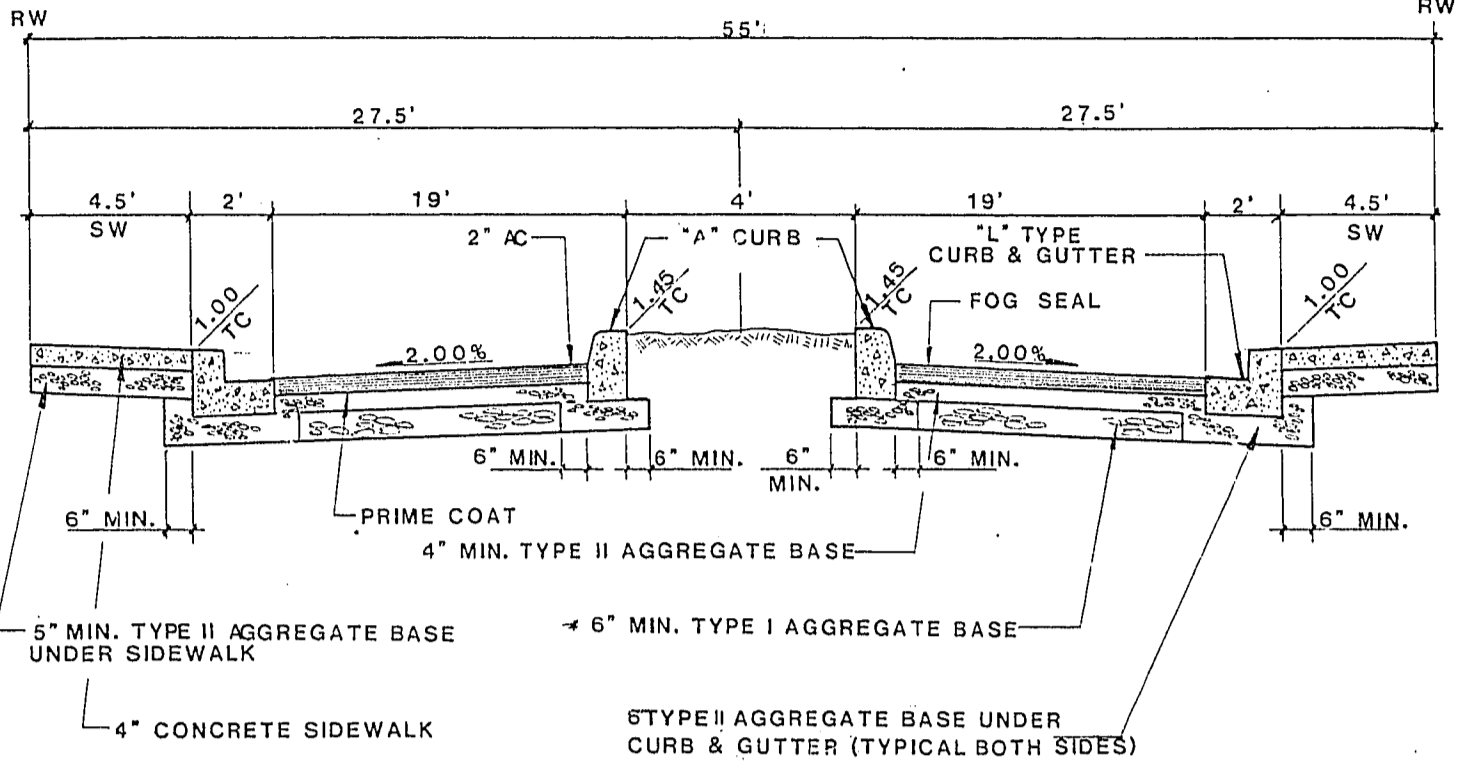
CLV. STD. DWG. #516  
**TYPICAL FIRE HYDRANT DETAIL**



**FROM "L" TO "ROLL" TYPE CURB DETAIL**

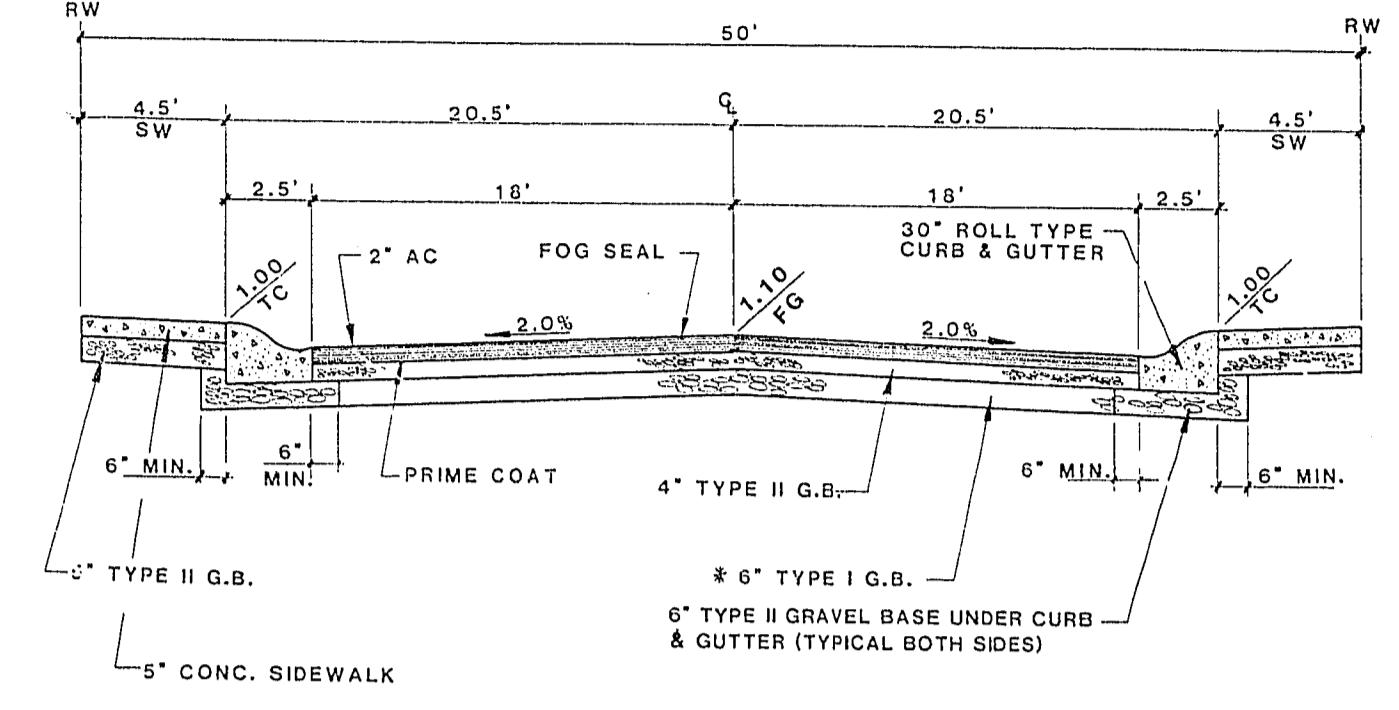


**30" "ROLL" TYPE CURB & GUTTER DETAIL**



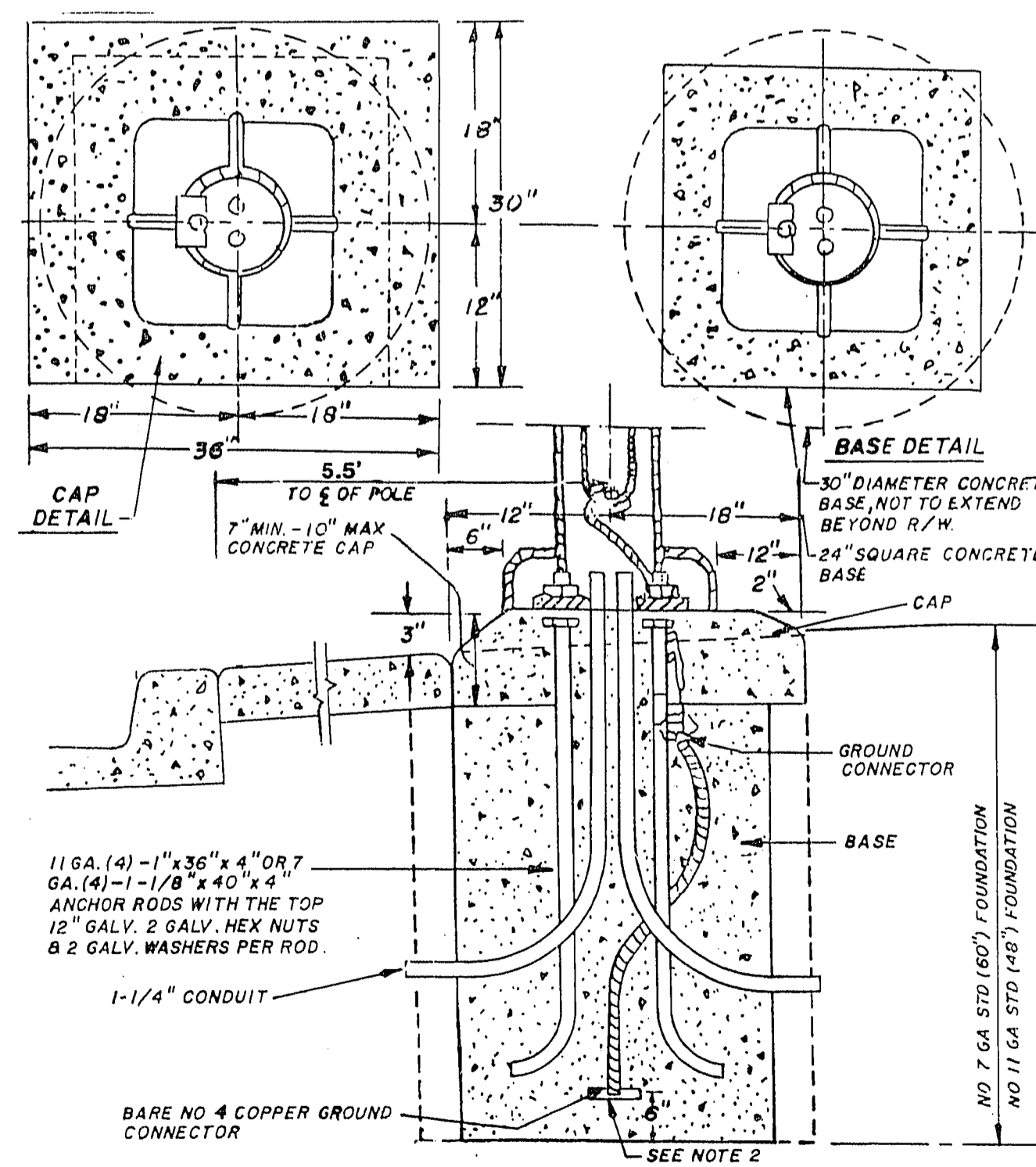
- \* 1. NATIVE MATERIAL TO BE PROCESSED IN ACCORDANCE WITH CLV "STATEMENT OF POLICY FOR USE OF NATIVE MATERIAL IN LIEU OF IMPORTED TYPE I BASE FOR DEDICATED CITY STREETS" DATED JULY 25, 1984.
2. 6" MINIMUM TYPE I OR TYPE II GRAVEL BASE UNDER CURB AND GUTTER.
3. A.C. PAVEMENT TO BE 1/2" (MIN.) ABOVE LIP OF GUTTER AFTER COMPACTION.

**TYPICAL 55' STREET SECTION WITH 5' MEDIAN ISLAND (ENTRANCE AT EXCALIBUR LANE)**

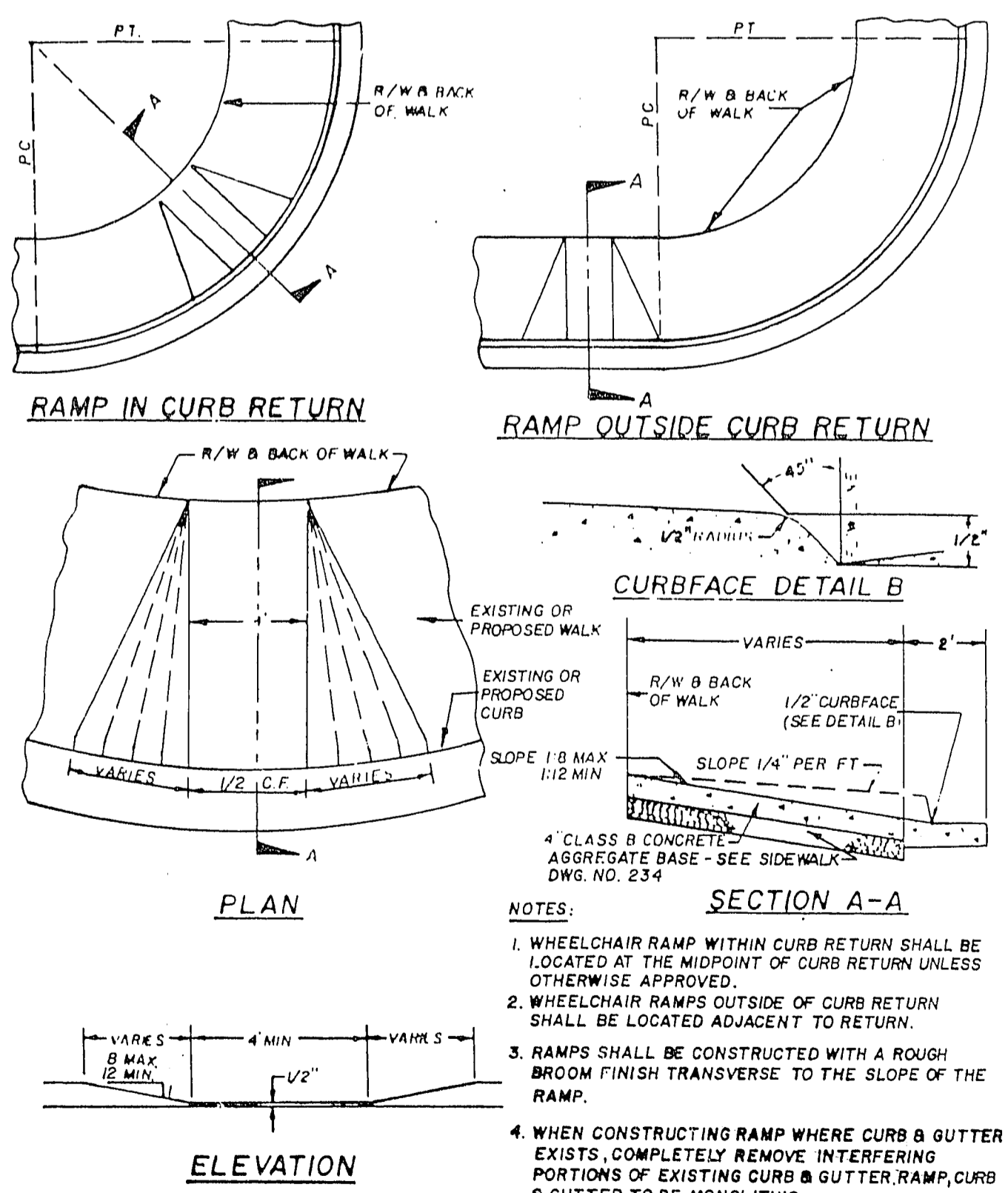


- \* 1. NATIVE MATERIAL TO BE PROCESSED IN ACCORDANCE WITH CLV "STATEMENT OF POLICY FOR USE OF NATIVE MATERIAL IN LIEU OF IMPORTED TYPE I BASE FOR DEDICATED CITY STREETS" DATED JULY 25, 1984.
2. 6" MINIMUM TYPE I OR TYPE II GRAVEL BASE UNDER CURB AND GUTTER.
3. A.C. PAVEMENT TO BE 1/2" (MIN.) ABOVE LIP OF GUTTER AFTER COMPACTION.

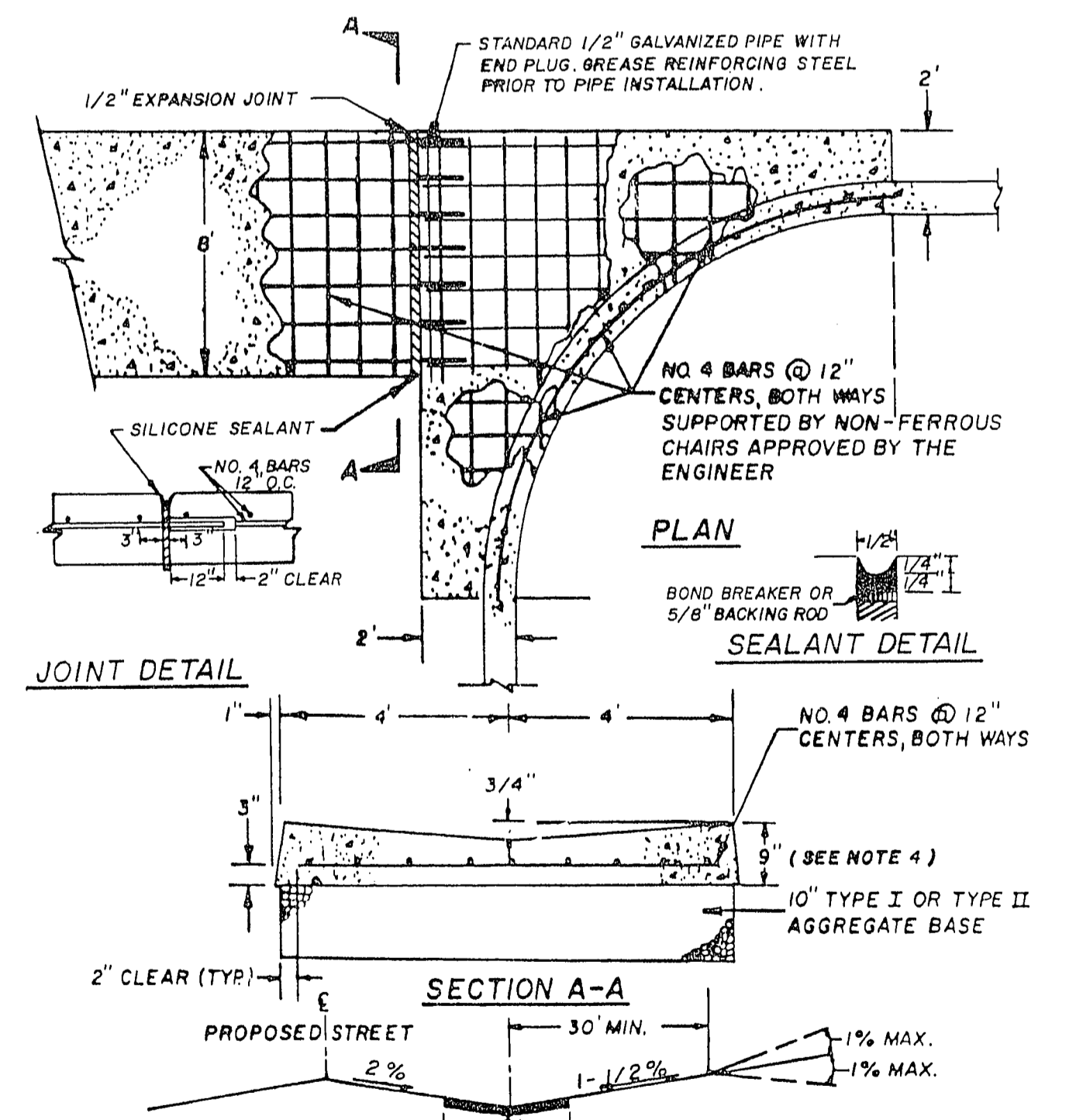
**TYPICAL 50' STREET SECTION (INTERIOR STREETS)**



CLV. STD. DWG. #319  
**TYPICAL STREET LIGHT DETAIL**



CLV. STD. DWG. #235  
**TYPICAL WHEELCHAIR RAMP DETAIL**



1. ALL CONCRETE SHALL BE CLASS B.
2. FINISHED ASPHALT CONCRETE SURFACE TO BE FLUSH WITH CROSS BUTTER LIP.
3. CONSTRUCTION OF CROSS BUTTER IS NOT ALLOWED ACROSS MAJOR COLLECTOR OR ARTERIAL STREETS.
4. ADJACENT SPANDREL SHALL BE 8" THICK P.C.C.

CLV. STD. DWG. #228  
**TYPICAL VALLEY GUTTER DETAIL**

REV.	DATE	BY	DESCRIPTION
1	11-11-85	DC	REVISED STREET LIGHT & FIRE HYDRANT DETAILS
2	6-25-89	TD	ADD STANDARD DWG. # 5

**ESI ENGINEERS & SURVEYORS INC.**  
1010 GARDNER AVENUE, SUITE 100, WILMINGTON, DE 19801  
PHILIP E. WATKINS, CIVIL ENGINEER  
SUBMITTED BY: [Signature]

DETAIL SHEET  
PROJECT: **DAVE BROWN WEST UNIT NO. 1**

WO NO.	5260
BY	P. CHAO
DATE	11/88
SCALE	NONE

SHEET **2**  
OF 8 SHEETS  
1074-4077-1

Call before you Dig.  
1-800-227-2600  
UNDERGROUND SERVICE UNIT