

GENERAL NOTES

1. ALL GRADES SHOWN HEREON ARE TO ROUGH GRADE ONLY AND ARE 0.3 FEET LOW TO ALLOW FOR LANDSCAPING EXCEPT T.C., F.L. AND F.G., WHICH ARE TO FINISH GRADE.
2. SEE IMPROVEMENT PLANS FOR STREET SECTIONS AND DETAILS. SEE FINAL MAP FOR EXACT BEARINGS AND DISTANCES.
3. THE QUANTITIES SHOWN HEREON ARE ESTIMATES ONLY AND ARE NOT TO BE USED FOR BIDDING PURPOSES.
4. CONTRACTORS SHALL VERIFY ALL CONDITIONS AND DIMENSIONS AND SHALL REPORT ALL DISCREPANCIES TO THE ENGINEER PRIOR TO THE COMMENCEMENT OF WORK.
5. ALL GRADING TO CONFORM TO SOILS REPORT BY WESTERN TECHNOLOGIES.
6. FINISH FLOOR ELEVATION TO BE 1.0 FOOT ABOVE PAD GRADE.
7. ALL GARAGE WALLS TO BE PROVIDED WITH 0.5' STEM WALL.

REVISION	DATE	BY	NOTES
1	6-22-88	BZ	ADDED NOTES - EXISTING

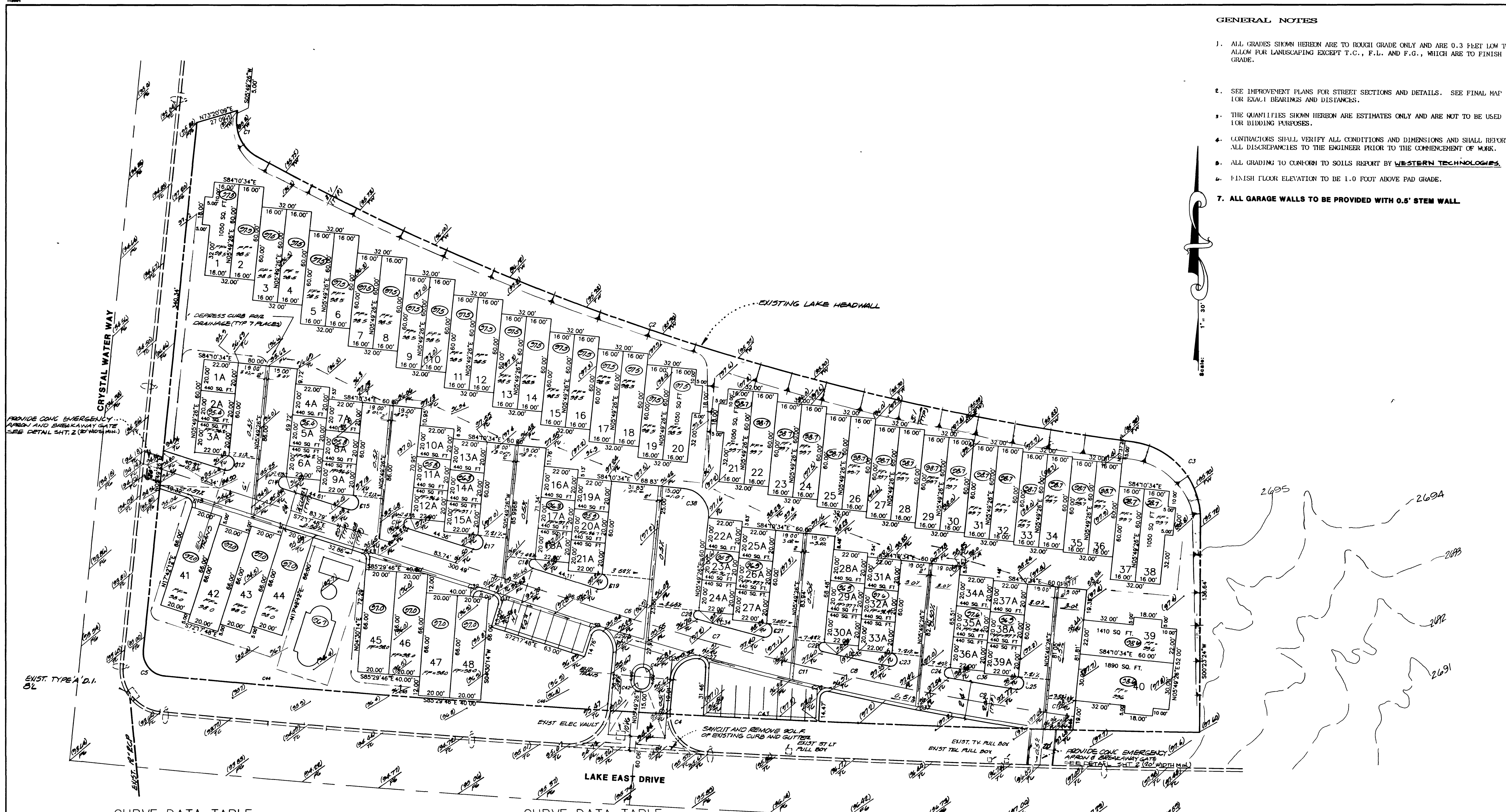
ESI ENGINEERS & SURVEYORS, INC.
 7015 W. CHARLESTON BL. LAS VEGAS, NV 89117
 REGISTERED PROFESSIONAL ENGINEER
 GEORGE W. STANFORD
 CIVIL
 NO. 7848
 SUBMITTED BY
George W. Stanford

ROUGH GRADING PLAN
EMERALD BAY LAKESIDE VILLAS

TITLE PROJECT

WO NO	4037
BY	PDS
DATE	3/2/88
SCALE	1" = 30'

SHEET	3
OF 5 SHEETS	



CURVE DATA TABLE

CURVE	RADIUS	LENGTH	TANGENT	DELTA
C1	25.00'	29.27'	16.57'	67°05'04"
C2	1600.00'	594.37'	300.65'	211°7'04"
C3	50.00'	72.37'	44.19'	82°56'06"
C4	8364.08'	664.83'	332.59'	04°33'15"
C5	15.00'	23.66'	15.10'	90°22'39"
C6	1776.75'	26.30'	13.15'	00°50'53"
C7	1776.75'	96.57'	48.30'	03°06'51"
C8	1776.75'	82.51'	41.26'	02°39'39"
C9	1776.75'	82.09'	41.05'	02°38'50"
C10	1776.75'	19.02'	9.51'	00°36'48"
C11	1776.75'	306.41'	153.58'	09°52'51"
C12	4.76'	14.97'	7.49'	180°00'00"
C13	4.99'	7.84'	4.99'	90°00'00"
C14	3.92'	12.31'	6.16'	180°00'00"
C15	4.76'	14.97'	7.49'	180°00'00"
C16	3.32'	10.43'	5.21'	180°00'00"
C17	4.76'	14.97'	7.49'	180°00'00"
C18	2.92'	9.18'	5.71'	180°00'00"
C19	4.94'	15.52'	7.76'	180°00'00"
C20	2.69'	8.46'	5.08'	180°00'00"
C21	4.48'	14.07'	7.04'	180°00'00"
C22	2.93'	9.20'	5.52'	180°00'00"
C23	4.21'	13.23'	6.62'	180°00'00"
C24	3.24'	10.17'	5.09'	180°00'00"
C25	4.02'	12.64'	6.32'	180°00'00"
C26	5.00'	8.72'	5.96'	99°57'59"
C27	5.00'	6.06'	3.47'	69°28'14"
C28	15.00'	28.17'	14.09'	107°36'50"

CURVE DATA TABLE

CURVE	RADIUS	LENGTH	TANGENT	DELTA
C29	15.00'	20.33'	12.07'	77°39'49"
C30	5.00'	7.89'	5.04'	90°27'25"
C31	5.00'	7.85'	5.00'	90°00'00"
C32	4.00'	7.20'	5.05'	103°11'58"
C33	4.00'	5.36'	3.17'	76°48'02"
C34	1764.75'	44.19'	22.09'	01°26'04"
C35	1764.75'	44.03'	22.02'	01°25'46"
C36	1764.75'	44.18'	22.09'	01°26'04"
C37	1788.75'	128.86'	64.46'	04°07'39"
C38	17.17'	26.96'	17.17'	90°00'00"
C39	5.00'	15.71'	9.85'	180°00'00"
C40	5.00'	15.71'	9.85'	180°00'00"
C41	3.00'	9.42'	5.71'	180°00'00"
C42	3.00'	9.42'	5.71'	180°00'00"
C43	8363.78'	74.00'	37.00'	00°30'25"
C44	8364.08'	123.32'	61.66'	00°50'41"
C45	8364.08'	80.12'	40.06'	00°32'56"
C46	8364.08'	84.37'	42.19'	00°34'41"
C47	1600.00'	298.93'	149.90'	10°42'16"
C48	1600.00'	22.87'	11.43'	00°49'08"
C49	1600.00'	259.11'	129.54'	09°16'43"
C50	8364.08'	30.32'	15.16'	00°12'28"
C51	8364.08'	50.98'	25.49'	00°20'57"
C52	8364.08'	29.51'	14.75'	00°12'08"
C53	8364.08'	133.49'	66.75'	00°54'52"
C54	8364.08'	24.46'	12.23'	00°10'03"
C55	25.00'	3.17'	1.59'	07°15'27"
C56	25.00'	1.01'	0.51'	02°19'30"

EXISTING IMPROVEMENTS PER THE LAKES, SECTION 8, PHASE I.

EXCAVATION QUANTITIES

CUT	2827 C.Y.
FILL	3020 C.Y.
SHRINKAGE	598 C.Y.
SUBSIDENCE	453 C.Y.
IMPORT	1144 C.Y.

QUANTITY ESTIMATE

2" ASPHALTIC CONC. PAVING	4300 S.Y.
2" CONC. VALLEY GUTTER	1846 S.F.
"A" TYPE CURB	853 L.F.
"L" TYPE CURB & GUTTER	485 L.F.
10' VALLEY GUTTER	818 S.F.
CONC. EMERGENCY APRON	690 S.F.

LEGEND

- SCARP
- SET BACK (FRONT --- SIDE ---)
- SWALE
- RATE AND DIRECTION OF FLOW
- 3 LOT NUMBER
- Ⓢ BLOCK NUMBER
- Ⓢ PAD GRADE
- T.C. TOP OF CURB
- F.G. FINISH GRADE
- F.L. FLOW LINE
- ⊥ B. GRADE BREAK

5807

69-44 1078-4001

