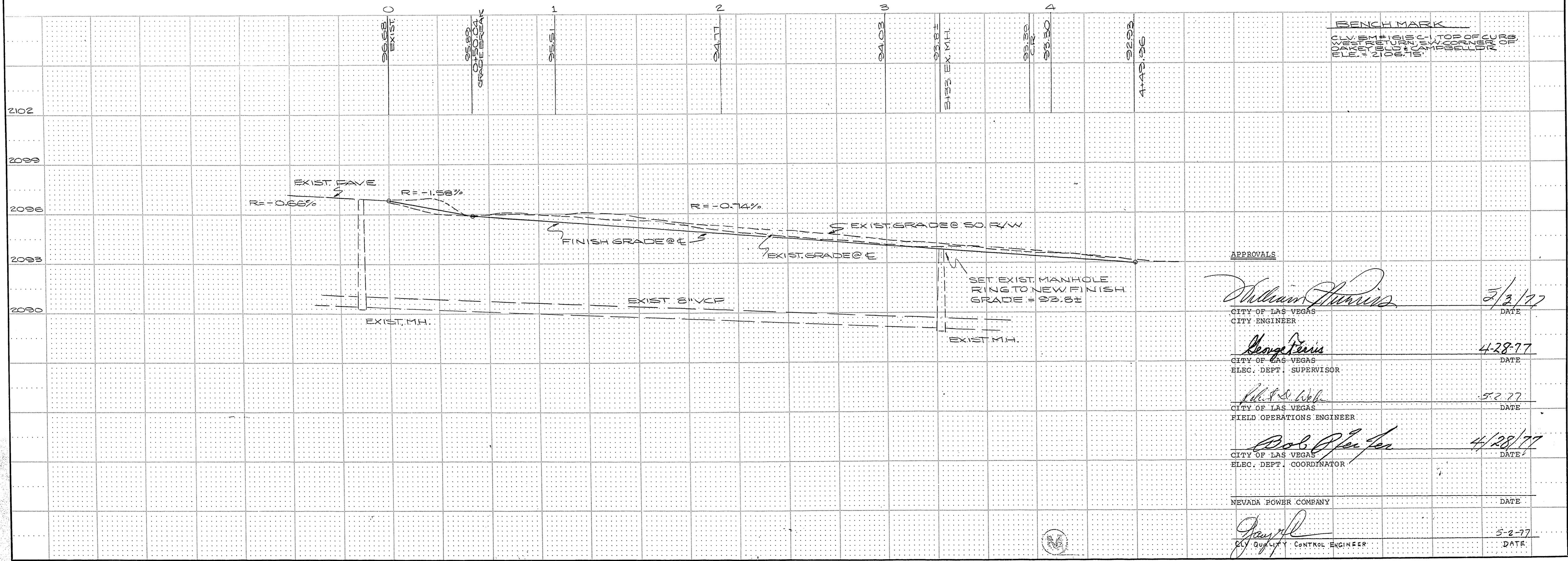
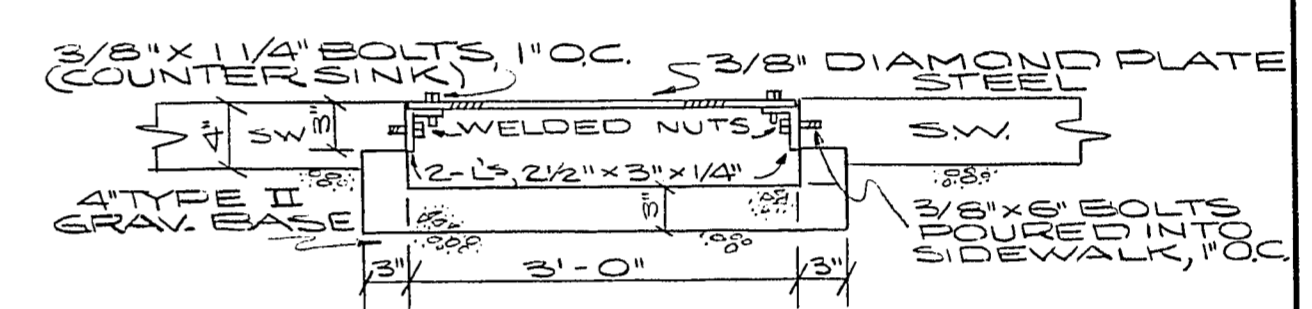
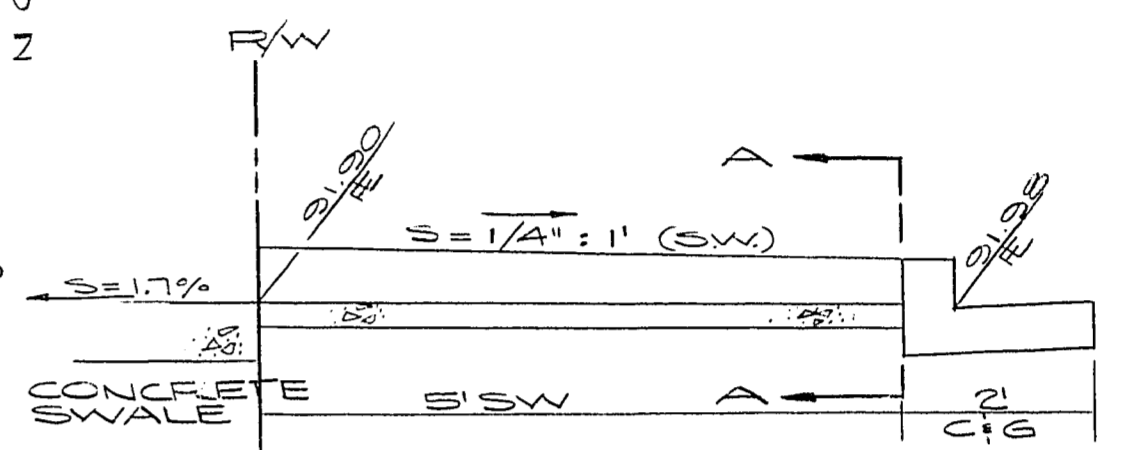
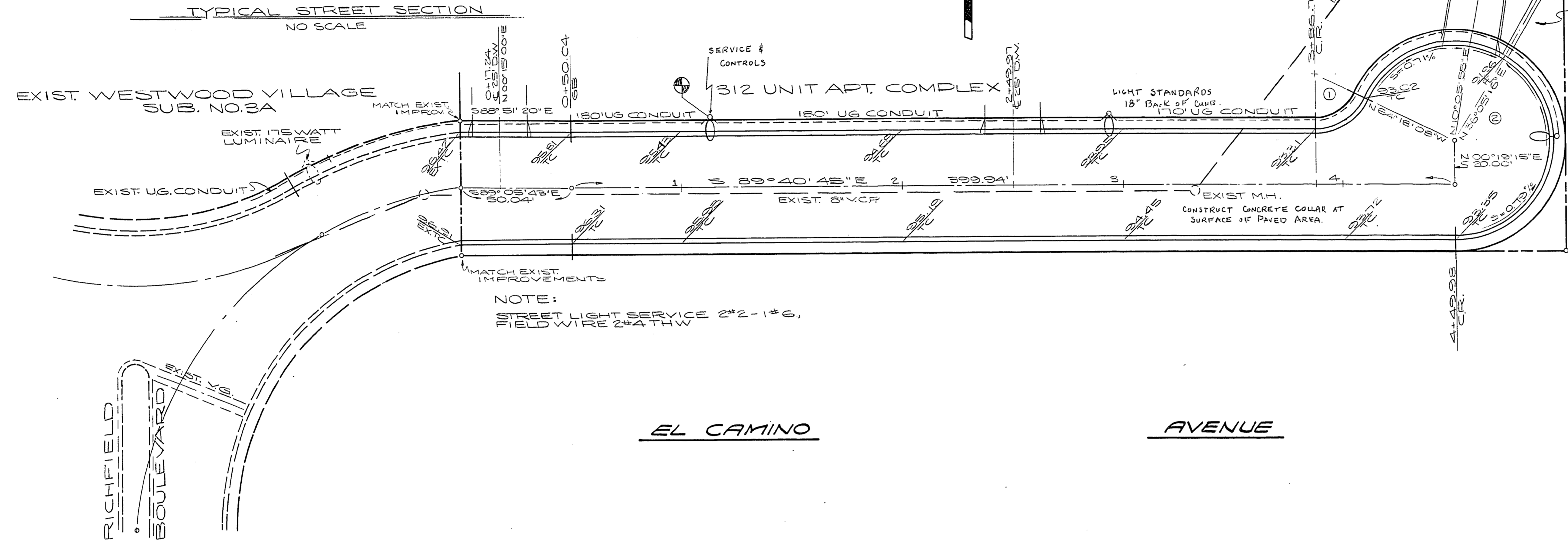


SCALE: 1" = 30' HORIZ. 1" = 3' VERT.

BACK OF CURVE CURVE DATA

①	TA = 100.00'	EA = 100.00'	EA = 100.00'
②	TA = 100.00'	EA = 100.00'	EA = 100.00'

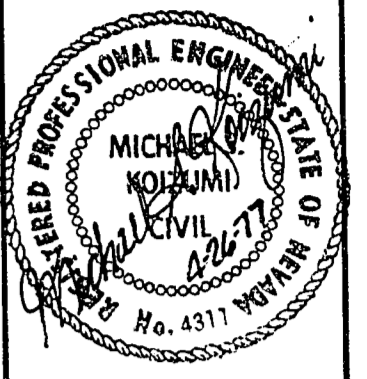


APPROVALS

<i>William Harris</i>	2/3/77
CITY OF LAS VEGAS CITY ENGINEER	DATE
<i>George Harris</i>	4-28-77
CITY OF LAS VEGAS ELEC. DEPT. SUPERVISOR	DATE
<i>Mike DeWalt</i>	5-2-77
CITY OF LAS VEGAS FIELD OPERATIONS ENGINEER	DATE
<i>Bob Pfeiffer</i>	4/28/77
CITY OF LAS VEGAS ELEC. DEPT. COORDINATOR	DATE
NEVADA POWER COMPANY	DATE
<i>George Harris</i>	5-2-77
CITY OF LAS VEGAS CONTROL ENGINEER	DATE

REVISIONS

NO.	DESCRIPTION/DATE	BY



SPARKS, NEVADA  
LAS VEGAS, NEVADA  
SEATTLE, WASHINGTON  
incorporated  
**SCA**  
ENGINEERS/PLANNERS  
ARCHITECTS

A.G. SPANOS  
312 UNIT APARTMENT COMPLEX  
PLAN # PROFILE  
EL CAMINO AVENUE  
LAS VEGAS, NEVADA

JOB NO. 2-0102-008

DESIGNED	Holt
DRAWN	Holt
COMP.	BH
CHECKED	AK
DATE	FEB. 1977
SHEET NO.	5

5 OF 5 SHEETS