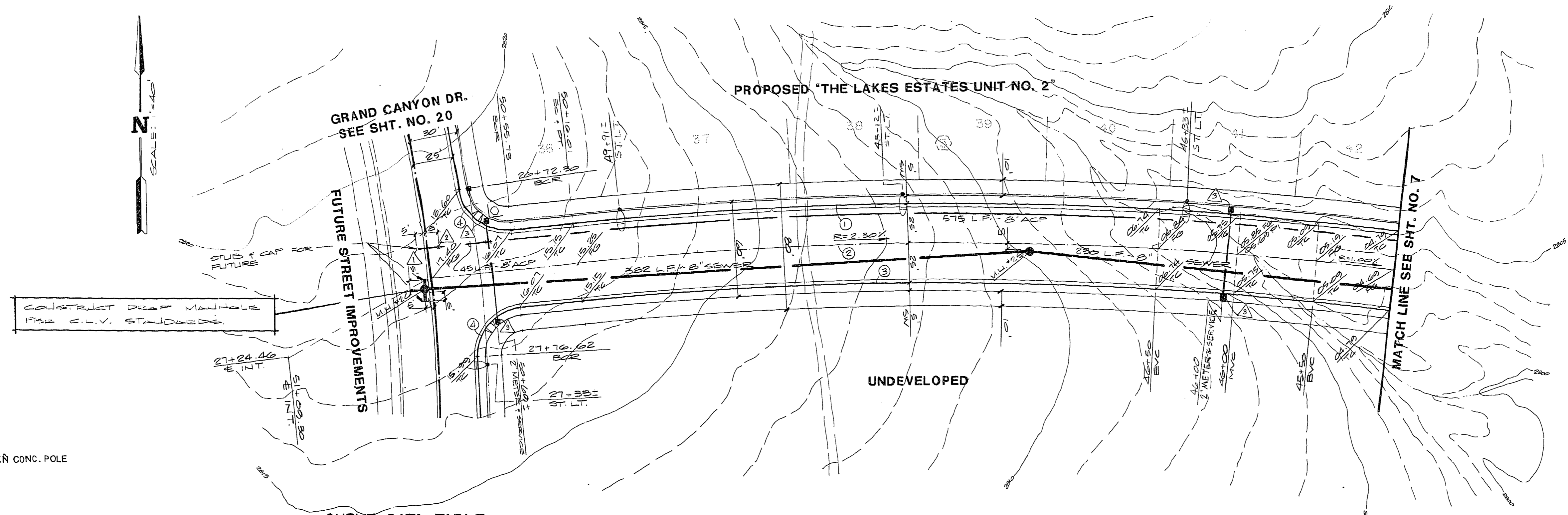


REV	DATE	BY	REASON
1	05-22-87	PC	REVISED
2	07-15-87	PC	REVISED
3	08-05-87	PC	REVISED

ES ENGINEERS & SURVEYORS INC.
1010 N. GARDENWAY, SUITE 100, LAS VEGAS, NEVADA 89107 (702) 733-1115

SUBMITTED BY:
Paul E. Calabrese 4/20/87



- LEGEND**
- 250 WATT H.P.S.
 - LIGHT STANDARD, GREEN CONC. POLE
 - 1 1/4" CONDUIT
 - STOP SIGN
 - STREET NAME SIGN
 - 3 1/2" PULL BOX
 - ▲ 2" BLOWOFF
 - △ 8" GATEVALVE
 - △ 2" METER & SERVICE

CURVE DATA TABLE

NO.	ANGLE	R	L	T
1	13° 14' 48"	2256.90	521.79	262.06
2	13° 14' 48"	2231.90	516.01	259.16
3	13° 14' 48"	2206.90	510.23	256.26
4	87° 00' 42"	30.00	45.56	28.47

MARINER COVE DRIVE

TITLE
STREET & SEWER PLAN & PROFILE
(MARINER COVE DRIVE STA. 45+00 TO 51+09.30)

PROJECT
E.1/2, SEC. 7 THE LAKES AT WEST SAHARA
PHASE 2

WO NO. 5018

BY PC

DATE 4/87

SCALE 1"=40'

SHEET
8

OF 22 SHEETS

see p. 1
CLV CHIEF LAND DEVELOPMENT DATE