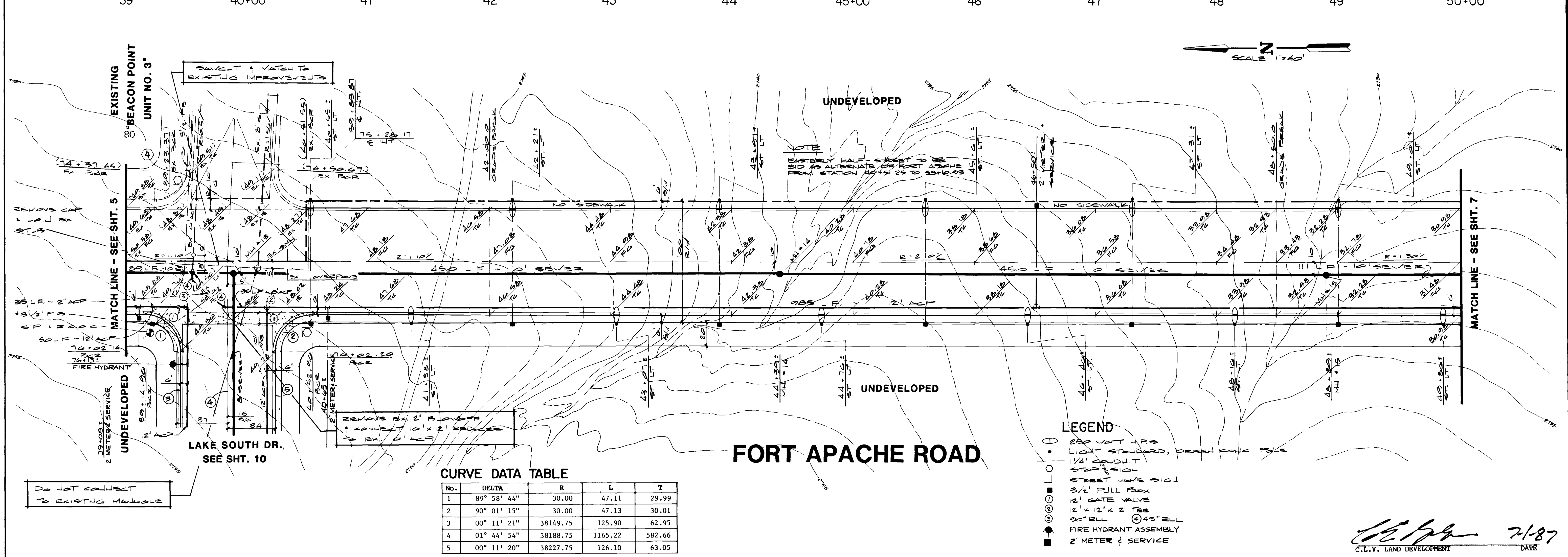


REV	DATE	BY	REVISION
1	2-20-87	PC	DESIGN & CONSTRUCTION
2	4-1-87	PC	ADD PROPOSED VALVE LINE TO SOUTH SIDE OF STREET
3	4-9-87	PC	ADD 2' METER SERVICE TO SOUTH SIDE OF STREET

ESI ENGINEERS & SURVEYORS INC.
 2001 TRINITY DRIVE, NAVAHO, ARIZONA 86445
 PHONE: (908) 421-1111
 FAX: (908) 421-1112
 SUBMITTED BY: *[Signature]* DATE: 1/13/87
 PROJECT: **E. 1/2, SEC. 7 THE LAKES AT WEST SAHARA PHASE 1**



CURVE DATA TABLE

No.	DELTA	R	L	T
1	89° 58' 44"	30.00	47.11	29.99
2	90° 01' 15"	30.00	47.13	30.01
3	00° 11' 21"	38149.75	125.90	62.95
4	01° 44' 54"	38188.75	1165.22	582.66
5	00° 11' 20"	38227.75	126.10	63.05

- LEGEND**
- 200 VOLT LPS
 - LIGHT STANDARD, PROPOSED FOUR 30'S
 - 1/2" CAULDIT
 - STOP SIGN
 - STREET NAME SIGN
 - 3/2" FULL BOX
 - 12" GATE VALVE
 - 2' x 12' x 2' T&B
 - 20" ELL
 - 45" ELL
 - FIRE HYDRANT ASSEMBLY
 - 2' METER & SERVICE

[Signature] 7-1-87
 C.L.V. LAND DEVELOPMENT DATE

WO NO	5018
BY	20/PC
DATE	1/87
SCALE	HORIZ 1"=40' VERT 1"=4'
SHEET	6
OF 11 SHEETS	

