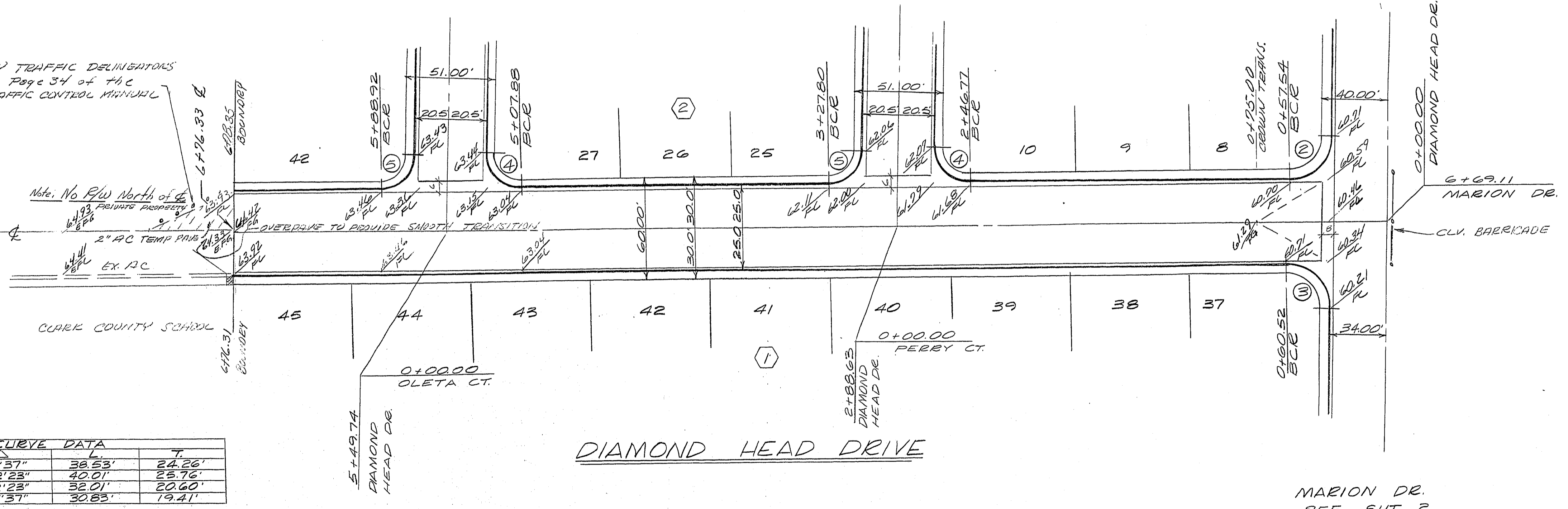


NOTE: IMPROVEMENTS TO BE PROTECTED FROM EROSION.

OLETA CT. SEE SHT. 7

PERRY CT. SEE SHT. 6

TEMPORARY TRAFFIC DELINEATORS Refer to Page 34 of the NEVADA TRAFFIC CONTROL MANUAL

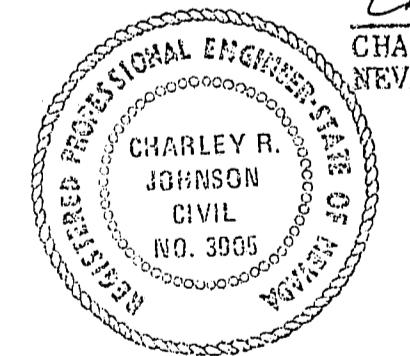


NO	R	CHORD DATA	T
1	25.00'	88°17'37"	38.53'
2	25.00'	91°42'23"	40.01'
3	20.00'	91°42'23"	32.01'
4	20.00'	88°17'37"	30.83'

APPROVED
 CLV CITY ENGINEER
 CLV FIELD OPERATIONS ENGINEER
 CLV QUALITY CONTROL ENGINEER
 CLV TRAFFIC ENGINEER

9/23/78
 9-27-78
 9-27-78
 9-20-78

SUBMITTED BY
 Charley R. Johnson 6/14/78
 CHARLEY R. JOHNSON, P.E.
 NEVADA CERTIFICATE NO. 3005



CONSULTING ENGINEERS • PLANNERS
 2599 PARADISE ROAD, LAS VEGAS, NEVADA 89105
 (702) 735-0227

DIAMOND HEAD
 STREET PLAN & PROFILE
 DIAMOND HEAD DRIVE

SCALE: 1" = 40' W.O. NO. 2587 DATE 6/14/78 SHEET 5 OF 14
 HORIZ: DES. CJS REV. 5
 VERT: CHK. REV.