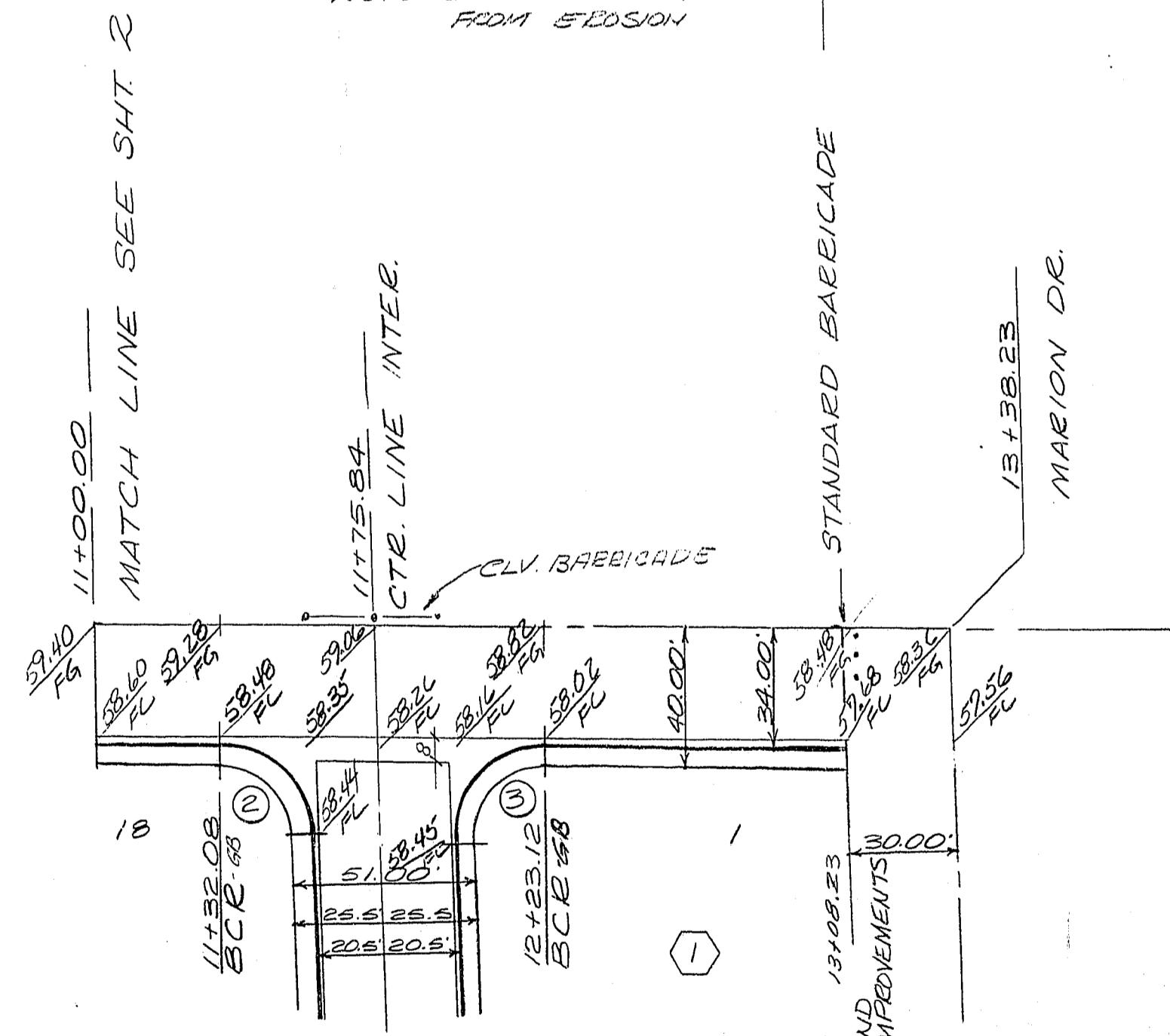


NOTE IMPROVEMENTS TO BE PROTECTED FROM EROSION

APPROVED  
 [Signature] 9/26/78  
 CIVIL ENGINEER DATE  
 [Signature] 9-27-78  
 CIVIL FIELD OPERATIONS ENGINEER DATE  
 [Signature] 9-27-78  
 CIVIL QUALITY CONTROL ENGINEER DATE  
 [Signature] 9-27-78  
 CIVIL TRAFFIC ENGINEER DATE

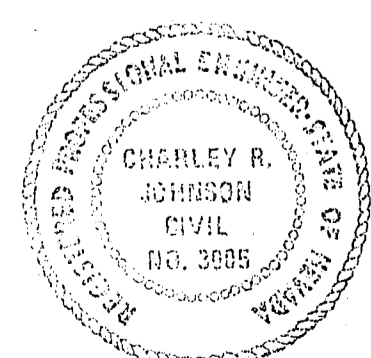
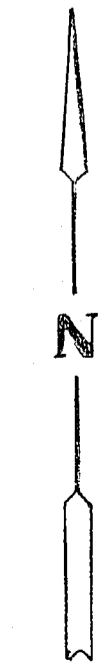
MARION DR. SEE THIS SHIT



JULENE CT. SEE THIS SHIT.

MARRION DRIVE

NO	R	Δ	L	T
1	22.00	88°17'37"	25.83'	24.26'
2	22.00	97°45'23"	10.01'	25.76'
3	30.00	44°14'57"	23.17'	18.19'
4	40.20	26°23'24"	18.97'	00
		134.14.57	4490	



JULENE COURT

SUBMITTED BY  
 Charley R. Johnson 6/14/78  
 CHARLEY R. JOHNSON, P.E. D.A.T.  
 NEVADA CERTIFICATE NO. 3005

CONSULTING ENGINEERS • PLANNERS  
 2599 PARADISE ROAD, LAS VEGAS, NEVADA 89105  
 (702) 735-0227

**DIAMOND HEAD**  
 STREET PLAN & PROFILE  
 MARRION DRIVE  
 JULENE COURT

SCALE: 1" = 40'  
 W.O. NO. 2587 DATE 6/14/78 SHEET 3 OF 14  
 HORIZ: DES. COS REV. 3  
 VERT: CHK. REV.