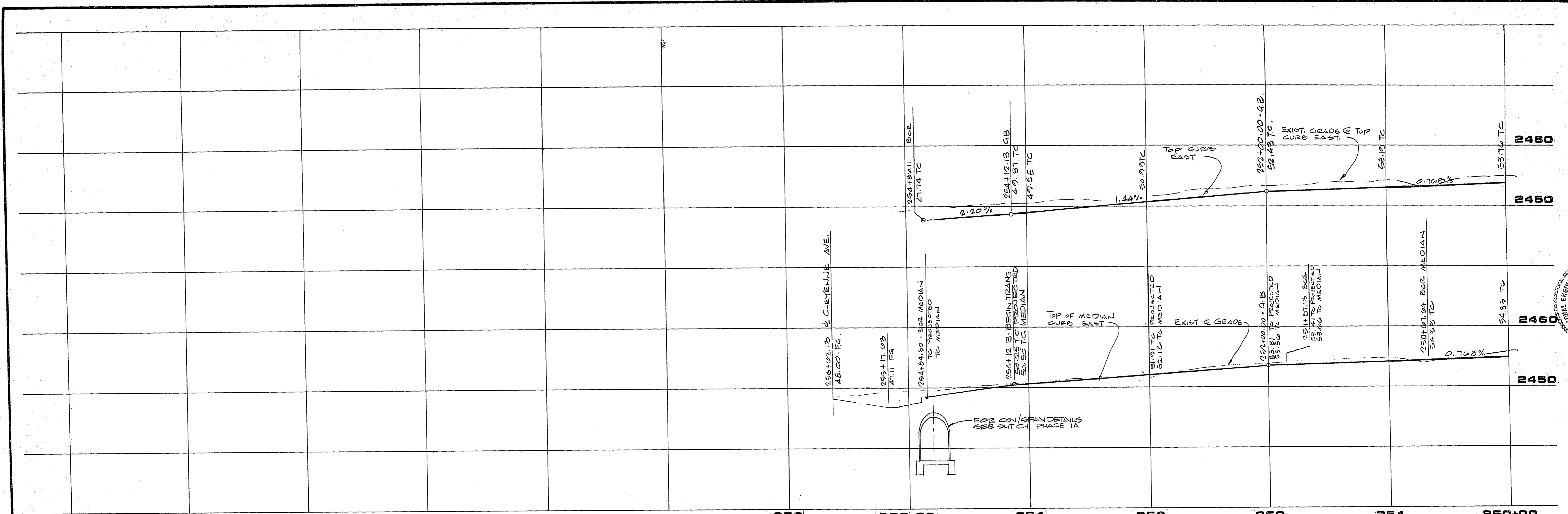
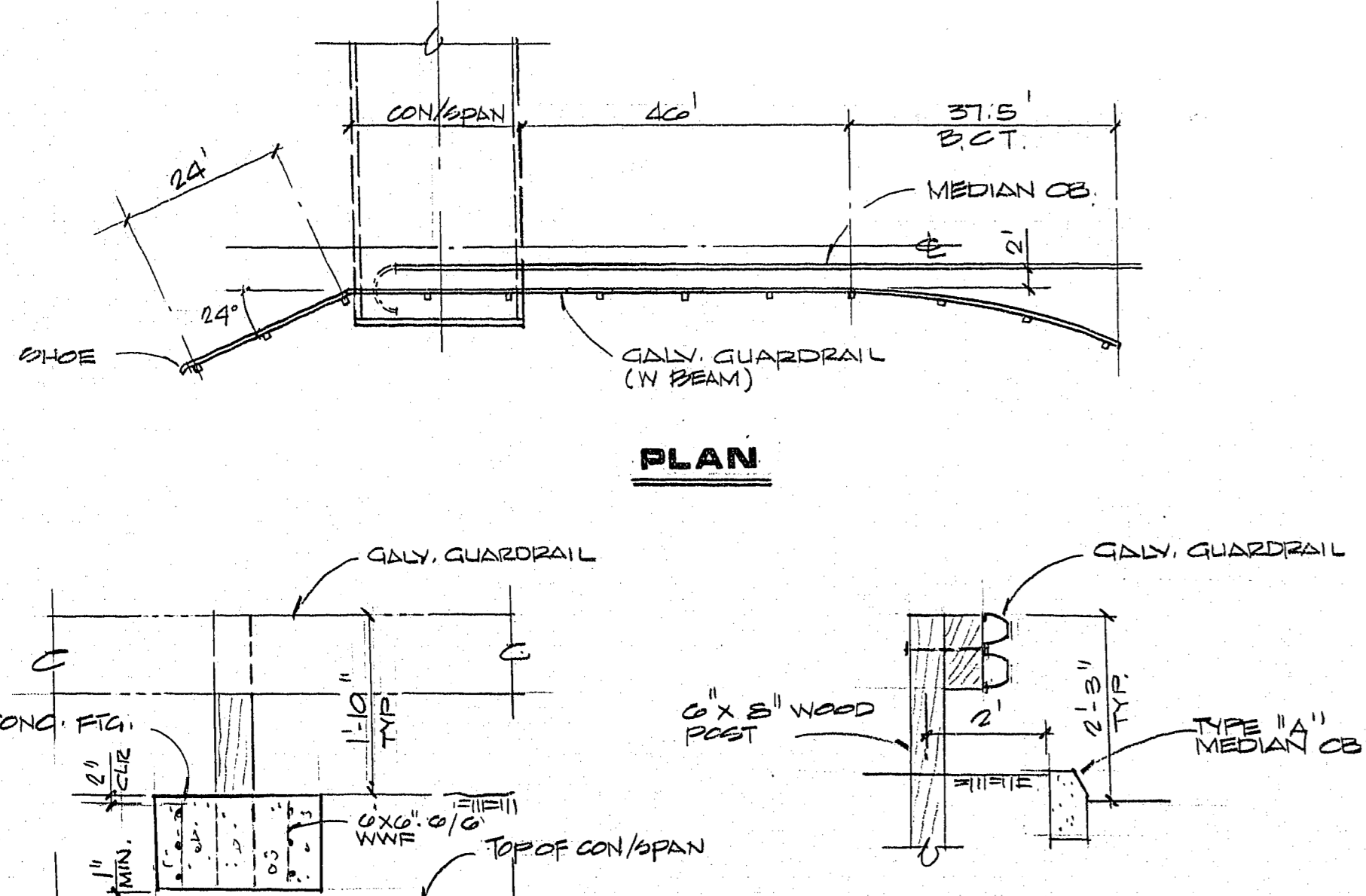


JOB NO. 660.012

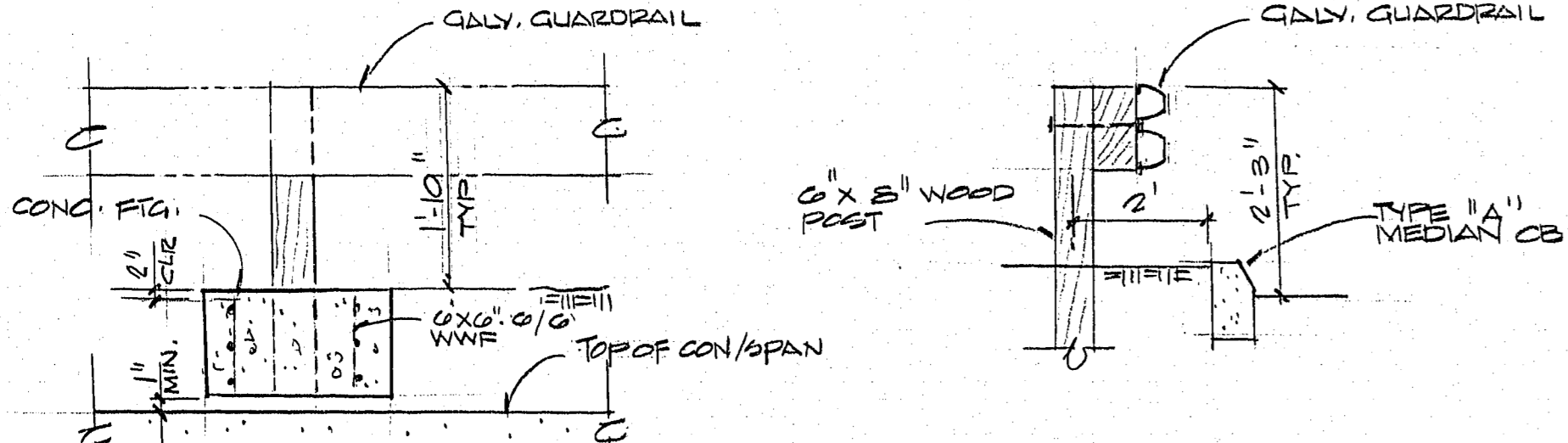


PROFILE
 HORIZ. 1"=40'
 VERT. 1"=8'

CHEYENNE AVE.
 (SEE SHT. 5)



PLAN

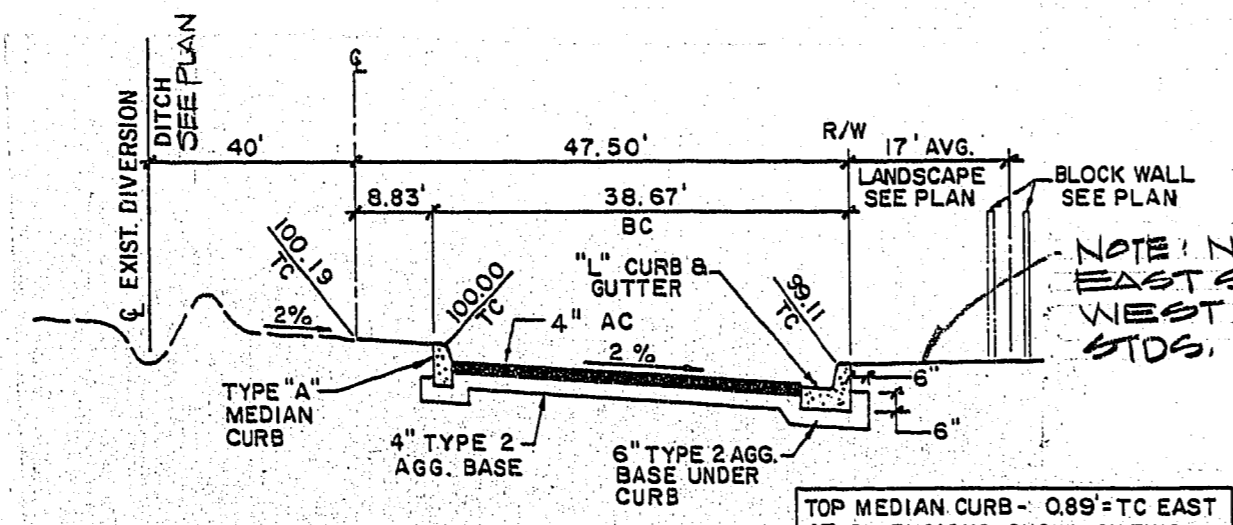


GUARD RAIL INSTALLATION

NOTES

- POSTS SHALL BE CUT TO OBTAIN MINIMUM CLEARANCE BETWEEN BOTTOM OF POST AND TOP OF R.C.B.
- CONCRETE SHALL BE FORMED AROUND POST WRAPPED WITH 1 LAYER OF 1/4-INCH EXPANDED POLYSTYRENE FOAM.
- OPTIONAL STEEL POSTS MAY BE USED PER N.D.O.T. STD. R-8.2.2.

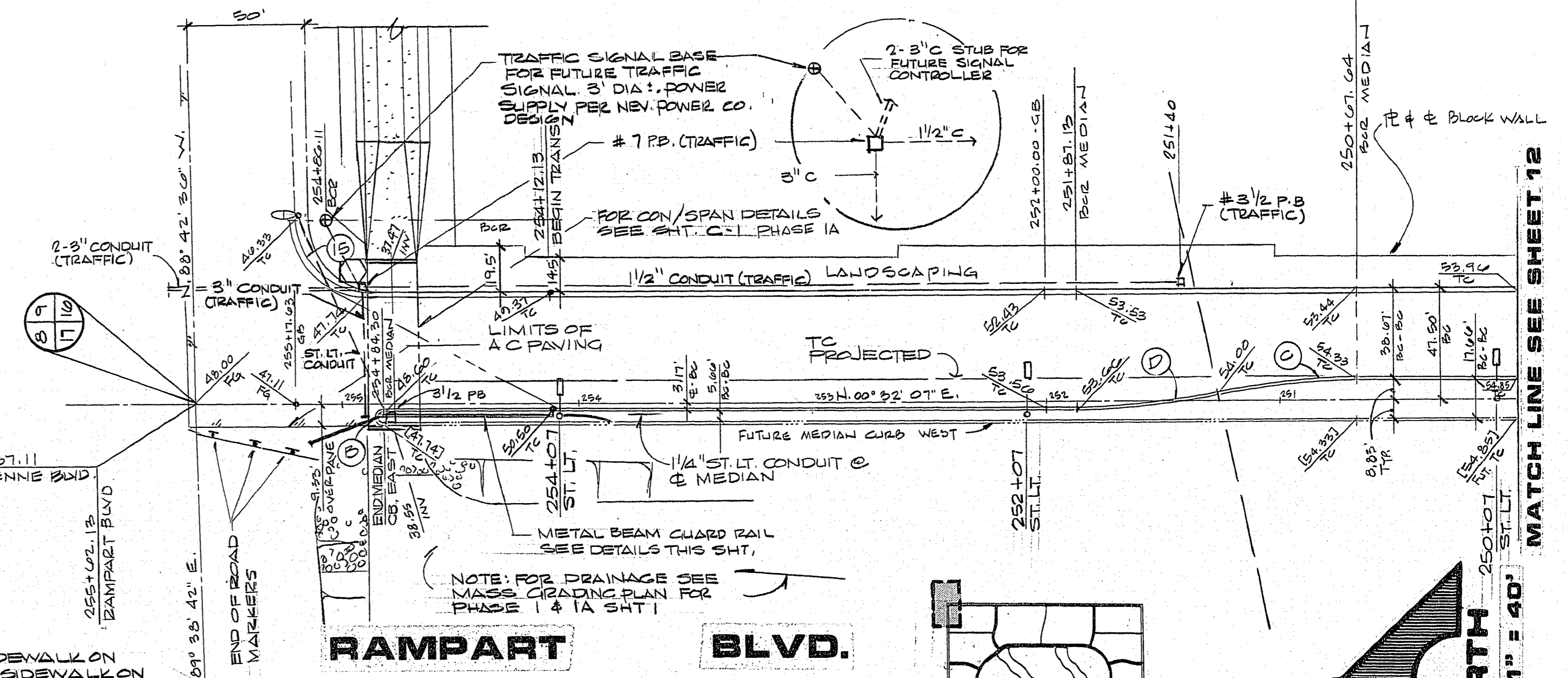
GUARD RAIL DETAILS



NOTES:

- STRUCTURAL SECTION OF STREET TO CONFORM TO C.L.V. STANDARD DRAWINGS.
- NATIVE MATERIAL MAY BE USED IN LIEU OF TYPE I WHEN PROCESSED FOR APPROVAL IN ACCORDANCE WITH CITY OF LAS VEGAS STATEMENT OF POLICY DATED 7/25/86.

RAMPART BLVD.

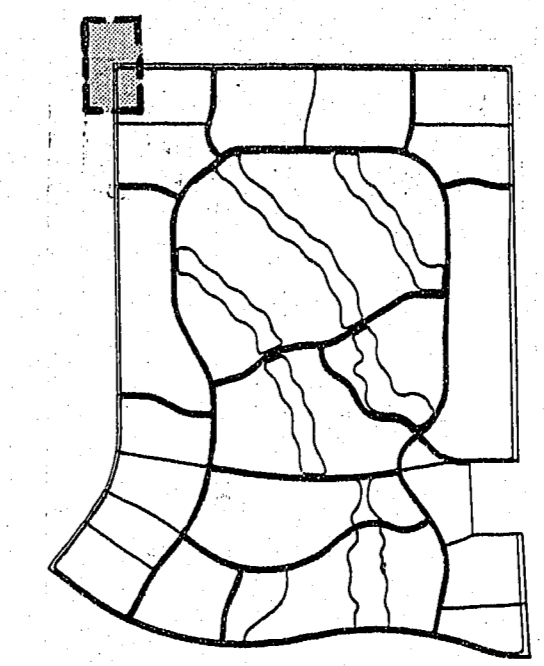


RAMPART

BLVD.

BCR CURVE DATA

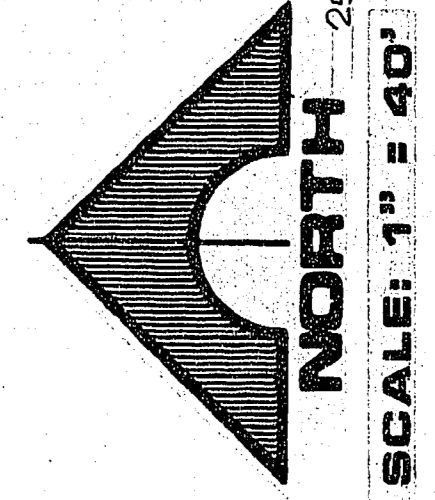
NO	Δ	R	L	T
A	90° 48' 17"	30.00'	47.82'	30.40'
B	180° 00' 00"	2.83'	8.89'	-
C	11° 28' 42"	300.00'	60.10'	30.15'
D	11° 28' 42"	300.00'	60.10'	30.15'



KEY MAP

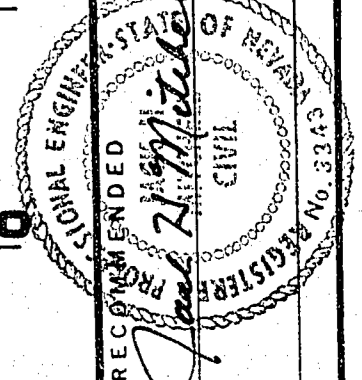
APPROVAL

N/A
 CLV CHIEF LAND DEVELOPMENT



SCALE: 1" = 40'
 MATCH LINE SEE SHEET 12

REV	DATE	DESCRIPTION
1	1-27-88	ADDED CON/SPAN AND REVISED ST. GRADES
2	1-27-88	REV. ST. GRADES, DATE AND LOC. OF TRAFFIC LIGHT BASE



G.C. WALLACE, INC.
 Engineering/Architecture
 155 SOUTH RAINBOW BLVD. LAS VEGAS, NEVADA 89102

DESERT SHORES DEVELOPMENT COMPANY
 DESERT SHORES - PHASE 1A
 RAMPART BLVD
 STA. 250+00.00 TO STA. 255+62.13

SHEET
13
 OF 23 SHEETS

DATE

107Y-1248-1A