

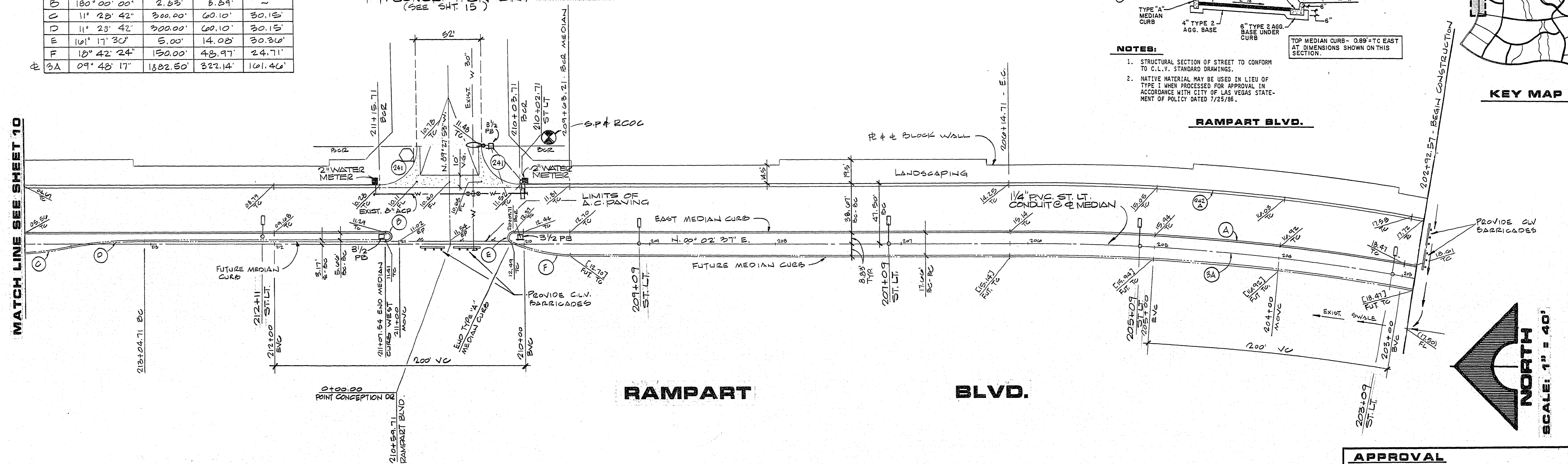
JOB NO. 660.012

MATCH LINE SEE SHEET 10

**BCR CURVE DATA**

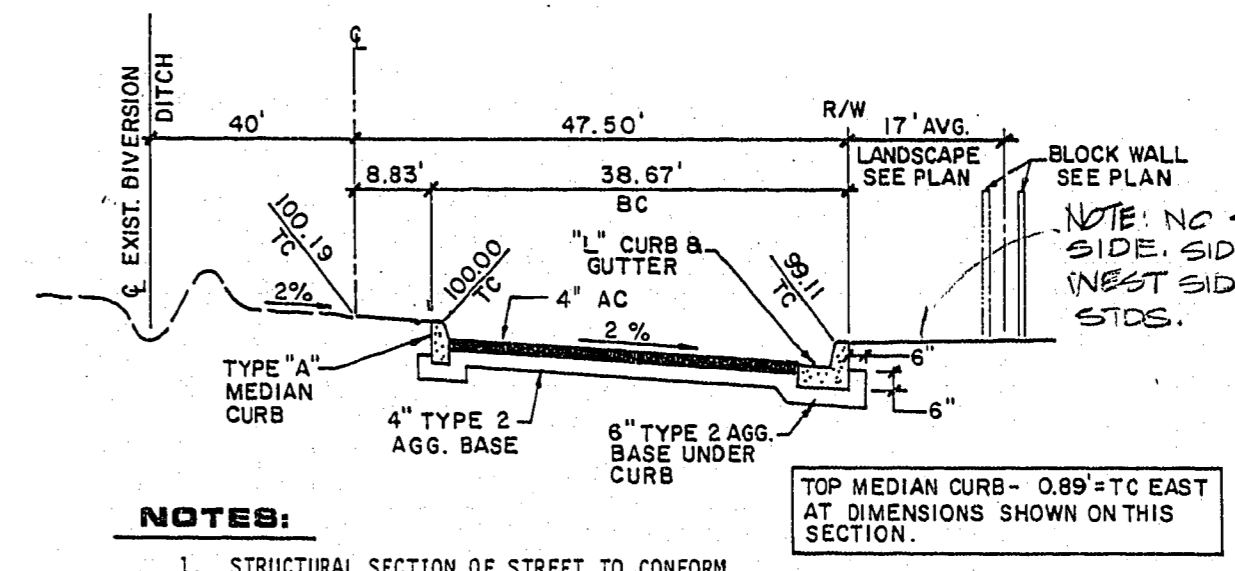
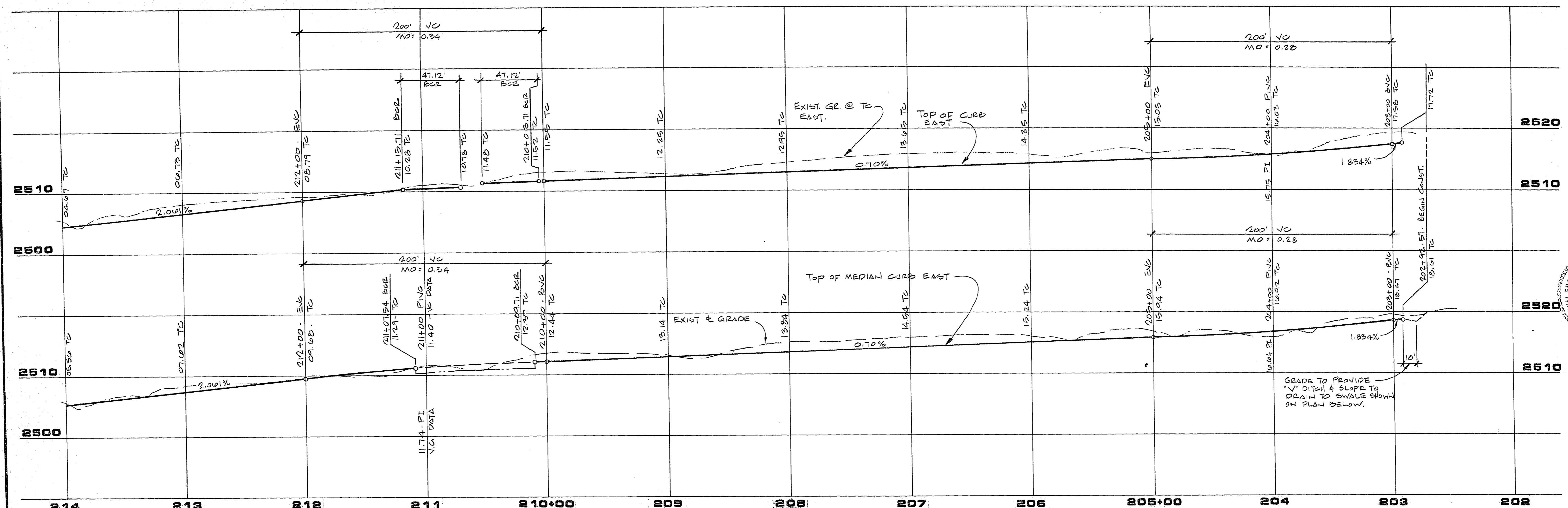
No.	Δ	R	L	T
241	90° 00' 00"	30.00'	47.12'	30.00'
242A	09° 48' 17"	1930.00'	330.27'	105.54'
A	09° 48' 17"	1891.33'	323.05'	102.22'
B	180° 00' 00"	2.63'	8.89'	-
C	11° 28' 42"	300.00'	60.10'	30.15'
D	11° 28' 42"	300.00'	60.10'	30.15'
E	161° 17' 30"	5.00'	14.08'	30.36'
F	18° 42' 24"	150.00'	48.97'	24.71'
3A	09° 48' 17"	1882.50'	322.14'	101.46'

PT. CONCEPTION DR.  
(SEE SHT. 15)

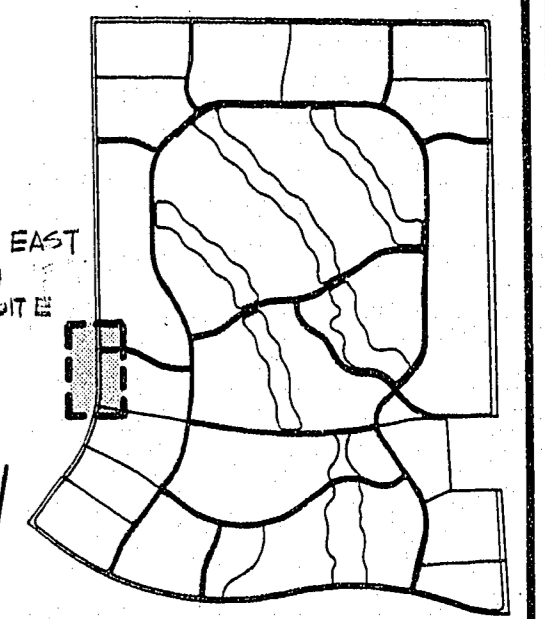


**PROFILE**

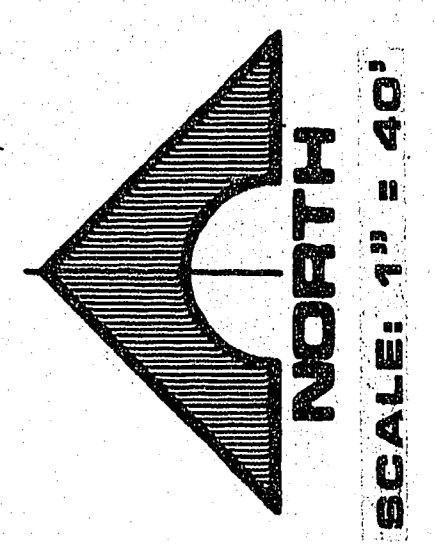
SCALE: HORIZ. 1"=40'  
VERT. 1"=8'



- NOTES:**
- STRUCTURAL SECTION OF STREET TO CONFORM TO C.L.V. STANDARD DRAWINGS.
  - NATIVE MATERIAL MAY BE USED IN LIEU OF TYPE 1 WHEN PROCESSED FOR APPROVAL IN ACCORDANCE WITH CITY OF LAS VEGAS STATEMENT OF POLICY DATED 7/25/86.



**KEY MAP**



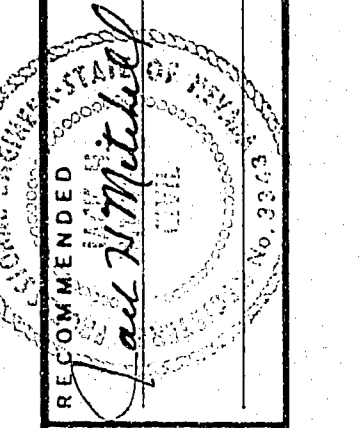
**APPROVAL**

CLV CHIEF LAND DEVELOPMENT  
DATE

DESERT SHORES DEVELOPMENT COMPANY  
DESERT SHORES - PHASE 1A  
RAMPART BLVD.  
STA. 202 + 92.57 TO STA. 214 + 00.00

SHEET  
9  
OF 22 SHEETS

REV	DATE	DESCRIPTION
1	1-22-88	ISSUED FOR PERMITS
2	1-27-88	REVISED
3	2-24-88	REVISED



**G.C. WALLACE, INC.**  
Engineering/Architecture  
1555 SOUTH RAINBOW BLVD. LAS VEGAS, NEVADA 89102