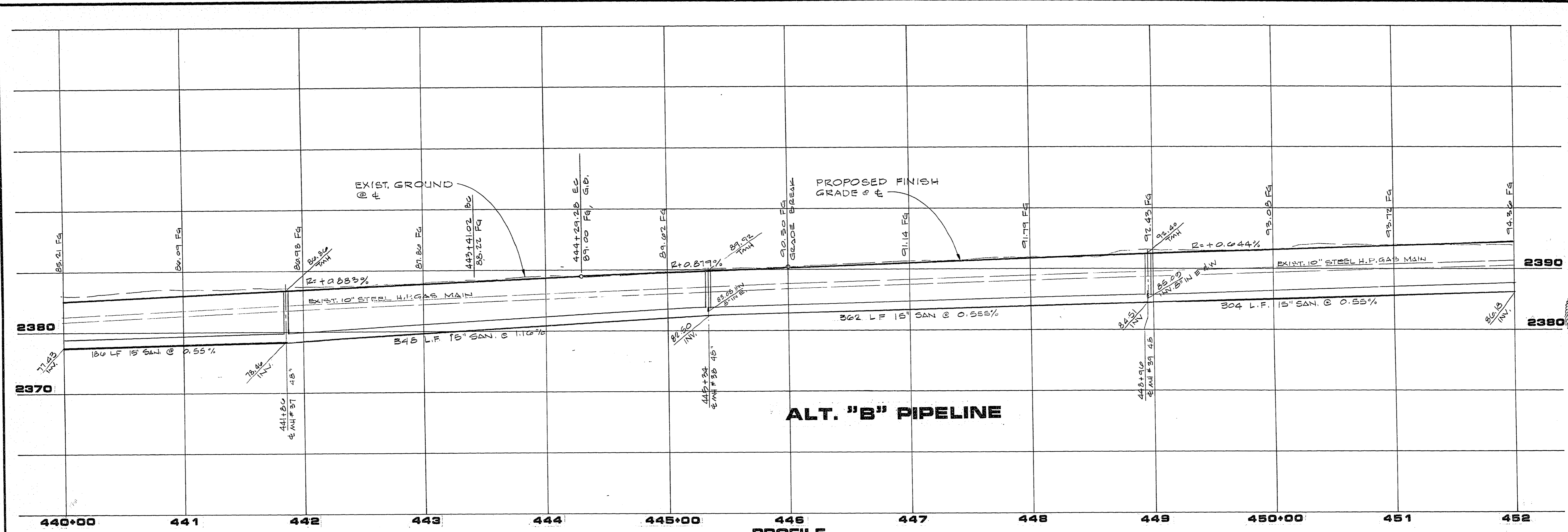
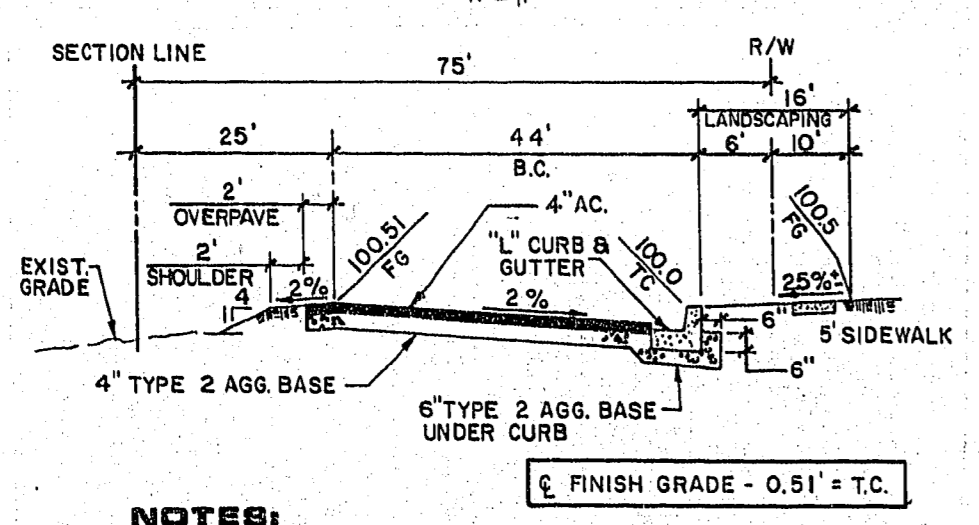
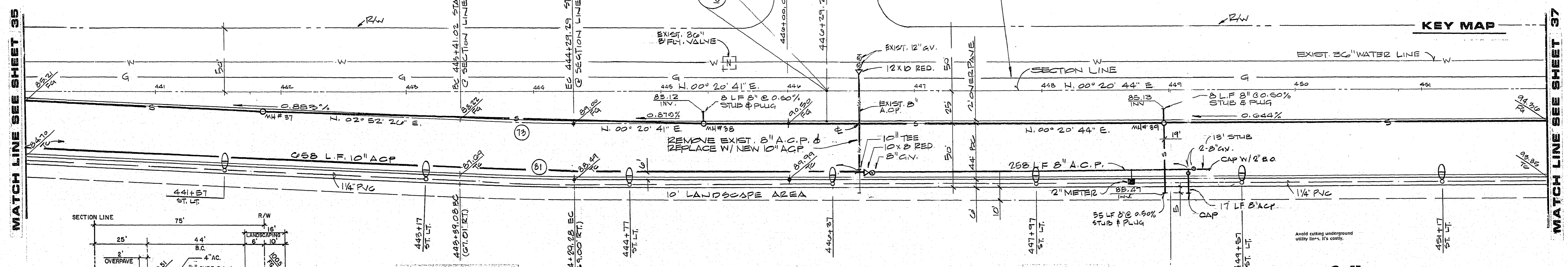
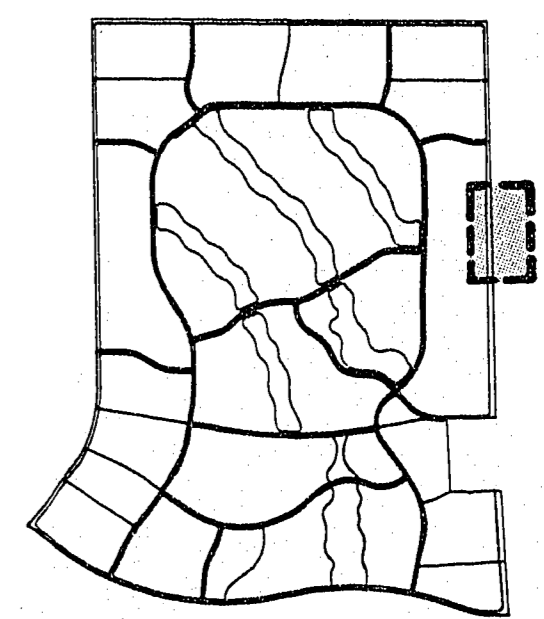


JOB NO. 660.009 9.14.87



**PROFILE**  
SCALE: HORIZ. 1"=40'  
VERT. 1"=8'

**CAUTION HIGH PRESSURE GAS MAIN.**  
NOTIFY SOUTHWEST GAS CORP.  
AT 365-2296 24 HRS IN ADVANCE  
OF ANY CONST.



- NOTES:**
- STRUCTURAL SECTION OF STREET TO CONFORM TO C.L.V. STANDARD DRAWINGS.
  - NATIVE MATERIAL MAY BE USED IN LIEU OF TYPE I WHEN PROCESSED FOR APPROVAL IN ACCORDANCE WITH CITY OF LAS VEGAS STATEMENT OF POLICY DATED 7/25/86.

**BUFFALO DRIVE**  
STA. 444+29.28 TO STA. 473.1278

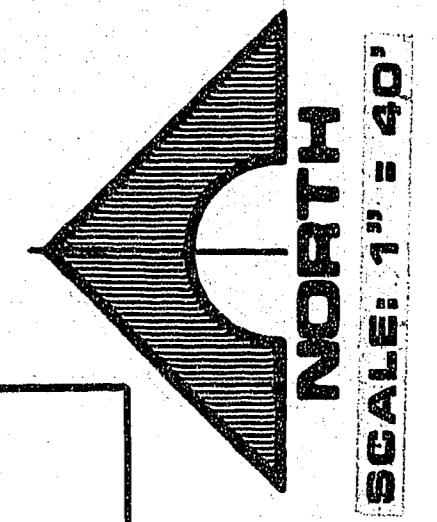
**BCR CURVE DATA**

No.	Δ	R	L	T
73	02° 31' 45"	2000.00'	88.28'	44.15'
81	02° 31' 45"	2050.00'	90.49'	45.25'

**NOTE:**  
SANITARY SEWER PIPE TO BE PVC

**APPROVAL**  
*[Signature]*  
CLV CHIEF LAND DEVELOPMENT  
DATE 9-22-87

Call before you Dig.  
1-800-227-2600  
UNDERGROUND SERVICE (USA)



REV	DATE	DESCRIPTION
1	7-23-87	REVISED GENERAL INVERT ELEVATIONS
2	8-5-87	ADDED SEWER STUBS & MANHOLES
3	10-15-87	GENERAL REVISIONS
4	1-14-88	REV ST 522 NOTE 1 DATE
5	4-14-88	REV PROJECT TITLE

DESERT SHORES - PHASE 1  
BUFFALO DRIVE  
STA. 440+00.00 TO STA. 452+00.00

R.A. HOMES  
G.C. WALLACE, INC.  
Engineering/Architecture  
1555 SOUTH RAINBOW BLVD., LAS VEGAS, NEVADA 89102

SHEET 36 OF 42 SHEETS