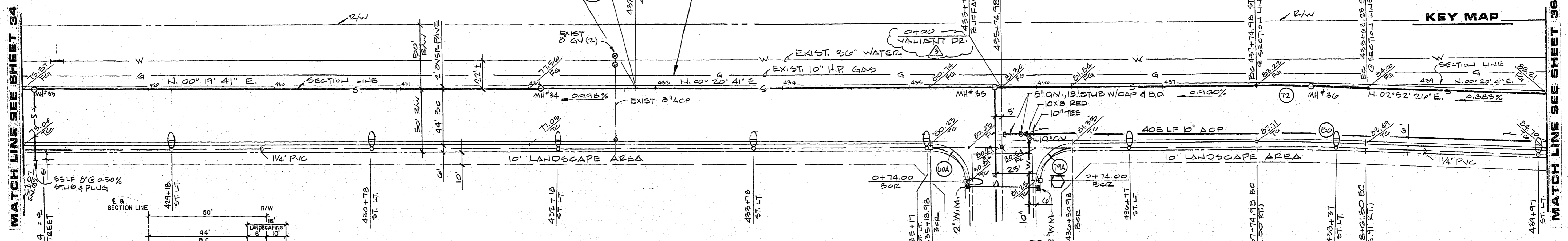
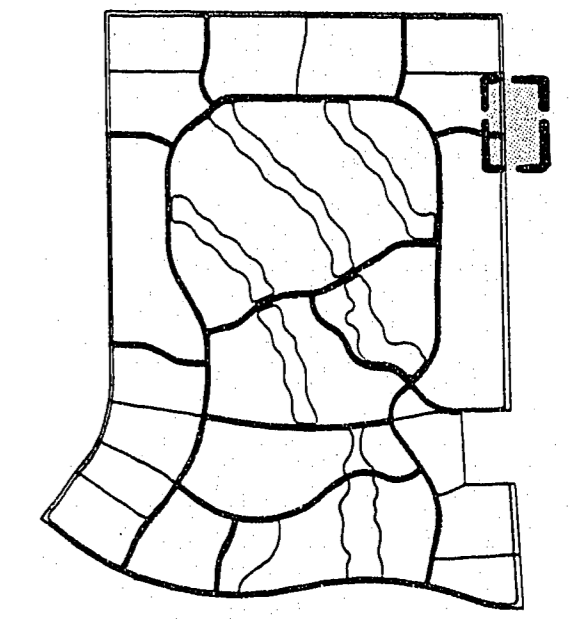


ALT. "B" PIPELINE

PROFILE

SCALE: HORIZ. 1"=40'
VERT. 1"=8'

CAUTION HIGH PRESSURE GAS MAIN.
NOTIFY SOUTHWEST GAS CORP.
AT 366-2296 24 HRS IN ADVANCE
OF ANY CONST.



BUFFALO DRIVE

- NOTES:**
- STRUCTURAL SECTION OF STREET TO CONFORM TO C.I.V. STANDARD DRAWINGS.
 - NATIVE MATERIAL MAY BE USED IN LIEU OF TYPE I WHEN PROCESSED FOR APPROVAL IN ACCORDANCE WITH CITY OF LAS VEGAS STATEMENT OF POLICY DATED 7/25/86.

BUFFALO DRIVE
BTA. 418+4.00 TO BTA. 437+74.88

BCR CURVE DATA

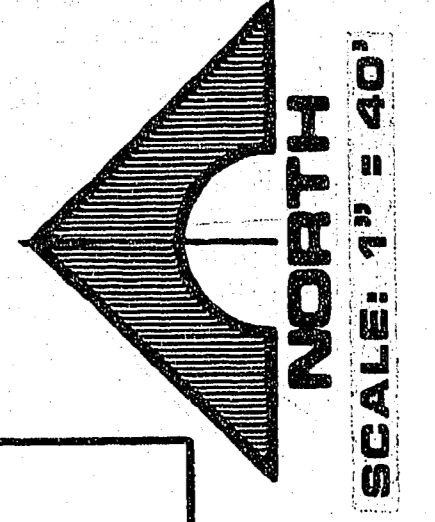
NO.	Δ	R	L	T
60A	90° 00' 02"	30.00'	47.12'	30.00'
79A	89° 59' 58"	30.00'	47.12'	30.00'
72	02° 31' 45"	2000.00'	88.28'	44.15'
80	02° 31' 45"	1950.00'	86.07'	43.04'

NOTE:
SANITARY SEWER PIPE TO BE PVC

Call before you Dig.

1-800-227-2600
UNDERGROUND UTILITY SERVICE (U.S.)

APPROVAL
[Signature]
CLV CHIEF LAND DEVELOPMENT
DATE 9.22.87



REVISIONS

REV	DATE	DESCRIPTION
1	11/87	GENERAL REVISIONS
2	11/87	DESIGN SEC NOTE & DATE
3	11/87	PROJECT TITLE & ST. NAMES

RECOMMENDED BY: *[Signature]*
DATE: 9/22/87

G.C. WALLACE, INC.
Engineering/Architecture
1535 SOUTH RAINBOW BLVD., LAS VEGAS, NEVADA 89102

DESERT SHORES - PHASE 1
BUFFALO DRIVE
STA 428+00.00 TO STA. 440+00.00

SHEET **35** OF 42 SHEETS

107Y-1248-1

JOB NO. 660.009 9-16-87