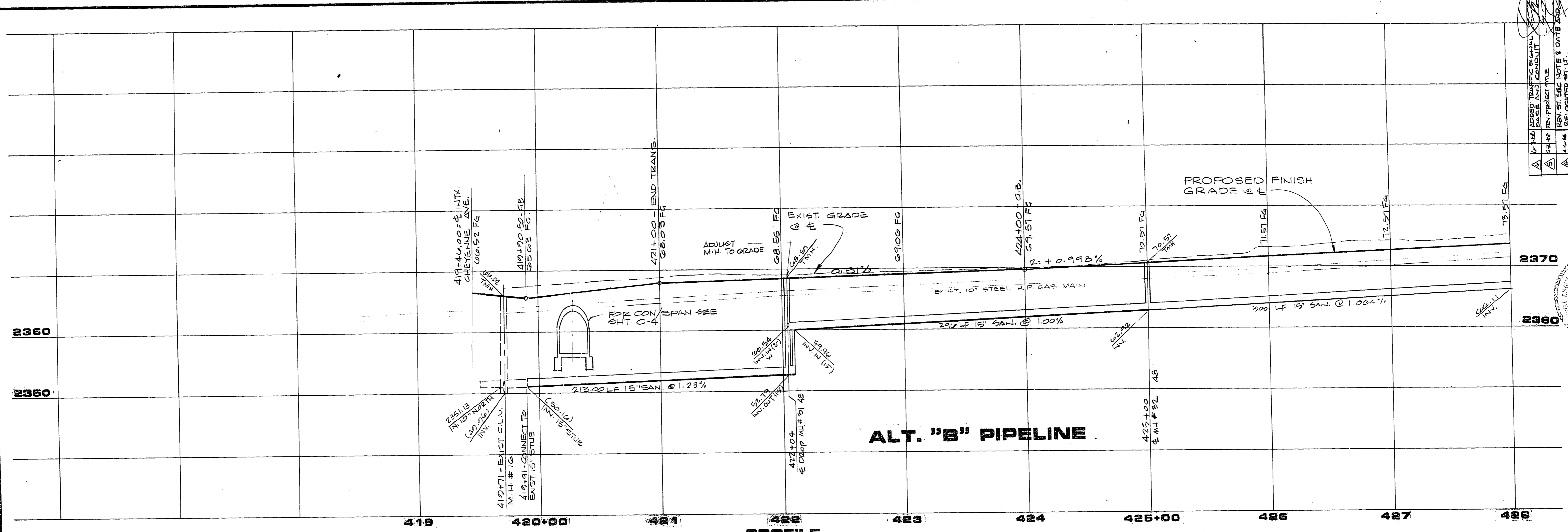
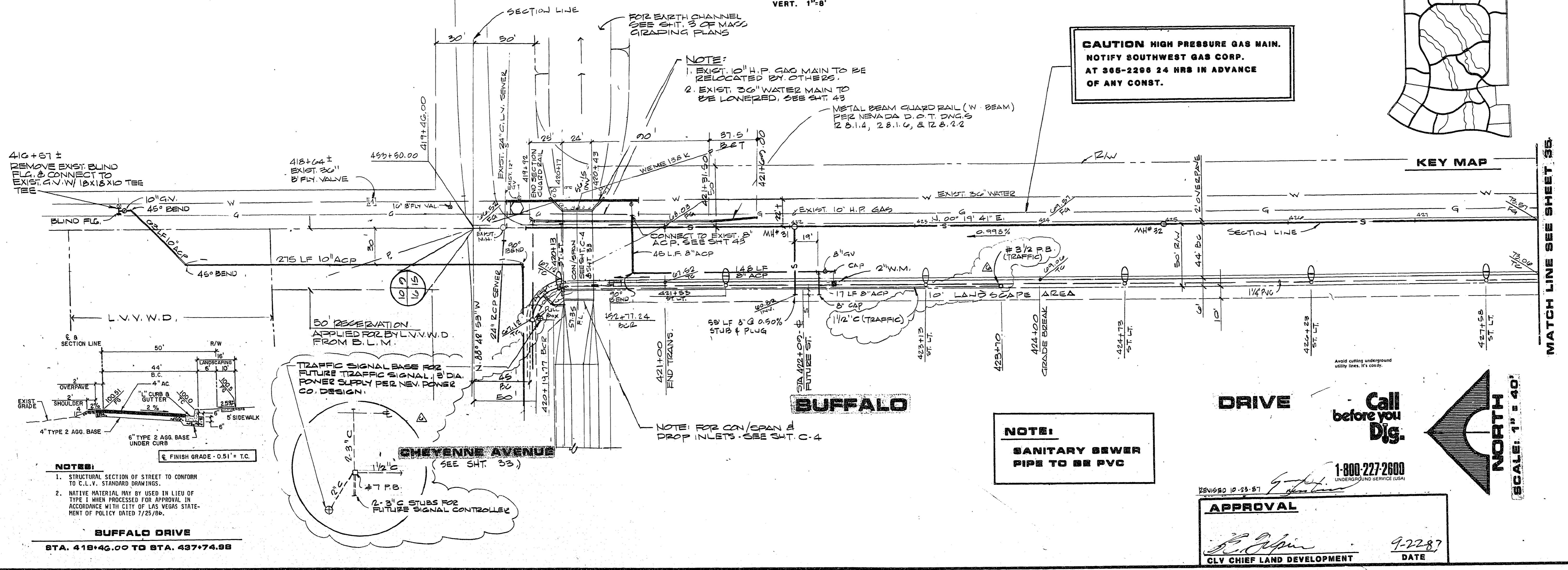


JOB NO. 660,008 0-14-87



PROFILE
SCALE: HORIZ. 1"=40'
VERT. 1"=8'



CAUTION HIGH PRESSURE GAS MAIN.
NOTIFY SOUTHWEST GAS CORP.
AT 365-2296 24 HRS IN ADVANCE
OF ANY CONST.

NOTE:
1. EXIST. 10" H.P. GAS MAIN TO BE
RELOCATED BY OTHERS.
2. EXIST. 36" WATER MAIN TO
BE LOWERED, SEE SHT. 43

NOTE:
SANITARY SEWER
PIPE TO BE PVC

Call before you Dig.
1-800-227-2600
UNDERGROUND SERVICE USA

APPROVAL
CLV CHIEF LAND DEVELOPMENT
DATE 9-22-87

MATCH LINE SEE SHEET 35.

REV	DATE	DESCRIPTION
1	10-1-87	ADDED TRAFFIC SIGNAL BASE AND CONDUIT
2	10-1-87	REV. PAVEMENT
3	10-1-87	REV. ST. 562 NOTE & DATE 2/20/88
4	10-1-87	RELOCATED ST. 428

RECOMMENDED	DATE	REVISION
1	1-19-88	DATE
2	2-17-88	DATE

G.C. WALLACE, INC.
Engineering/Architecture
1555 SOUTH RAINBOW BLVD. LAS VEGAS, NEVADA 89102

3 A HOMES
DESERT SHORES - PHASE 1
BUFFALO DRIVE
STA. 419+46.00 TO STA. 428+00.00
SHEET 34 OF 43 SHEETS

107-1248-1