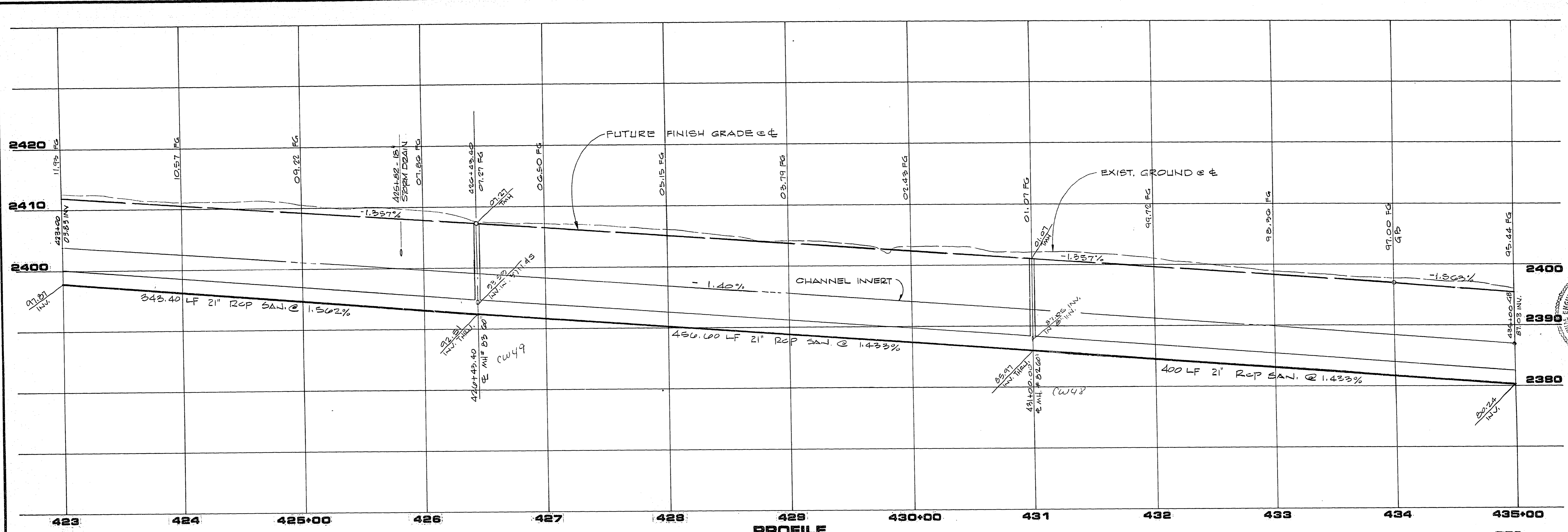
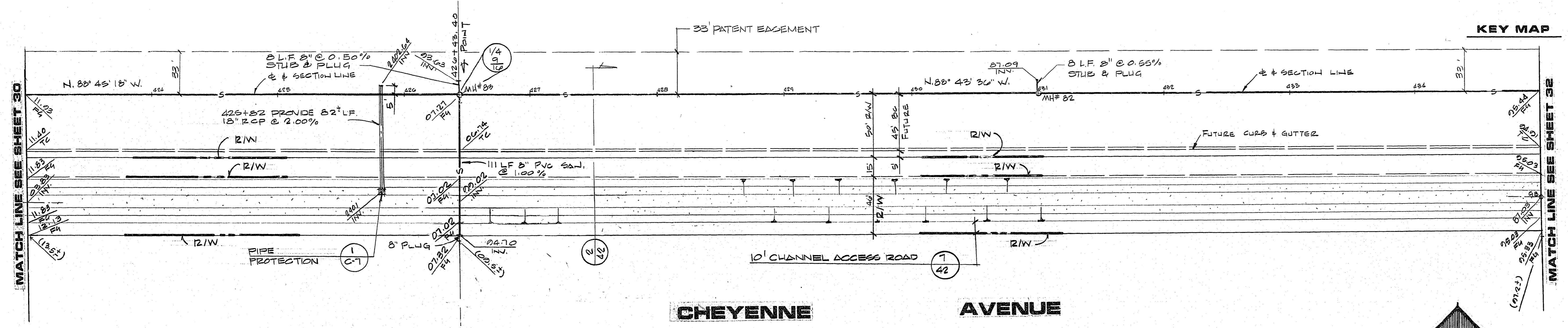
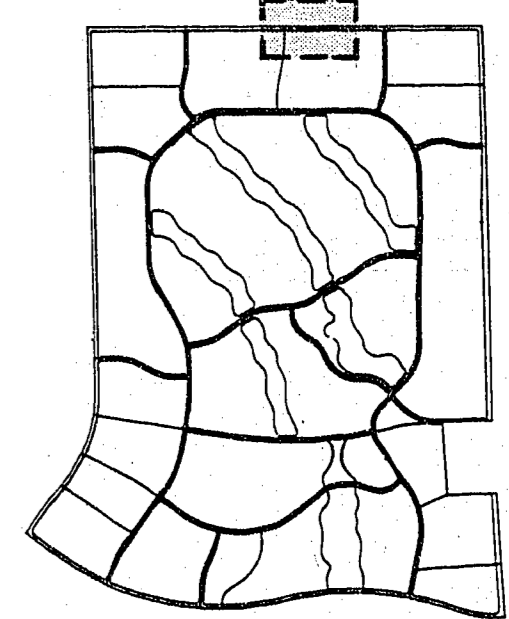


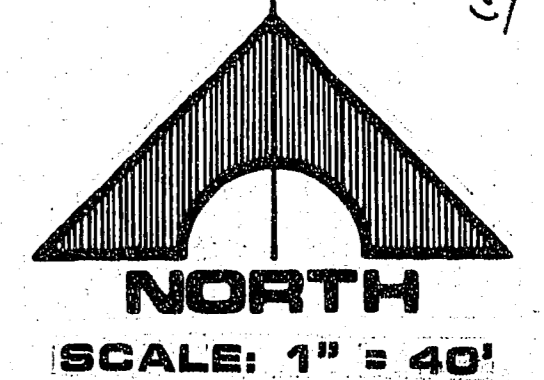
JOB NO. 660.009 0-14-87



PROFILE
 HORIZ. 1"=40'
 VERT. 1"=8'



CHEYENNE AVENUE



APPROVAL
[Signature]
 CLV-CHIEF LAND DEVELOPMENT
 DATE 7.22.87

REV	DATE	DESCRIPTION
1	07-14-87	ADDED SLOPE STUBS @ MANHOLE
2	07-14-87	REVISED CHANNEL PROFILE
3	07-14-87	REVISED PROJECT TITLE

3043 6/2/88
 R.E. NO. DATE
 G.C. WALLACE, INC.
 ENGINEER
 1535 SOUTH RAINBOW BLVD. LAS VEGAS, NEVADA 89102

G.C. WALLACE, INC.
 Engineering/Architecture

RA HOMES
 DESERT SHORES - PHASE 1
 CHEYENNE AVENUE
 STA. 423+00.00 TO STA. 435+00.00

SHEET
31
 OF 43 SHEETS

1074-12-48-1