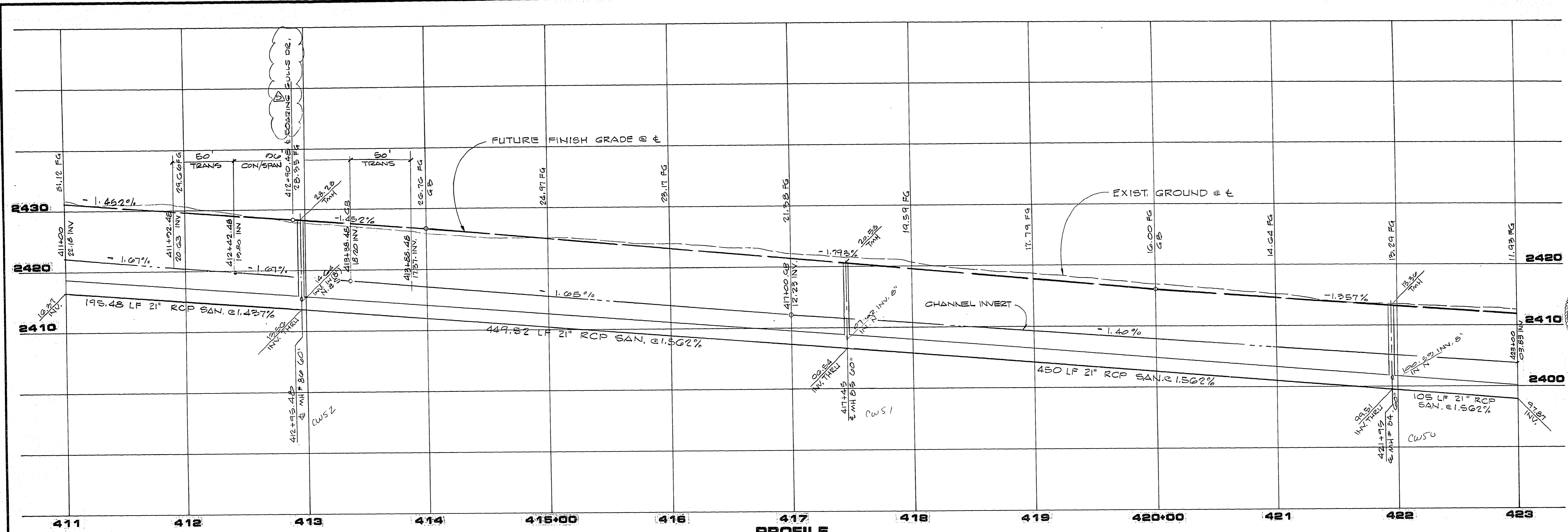
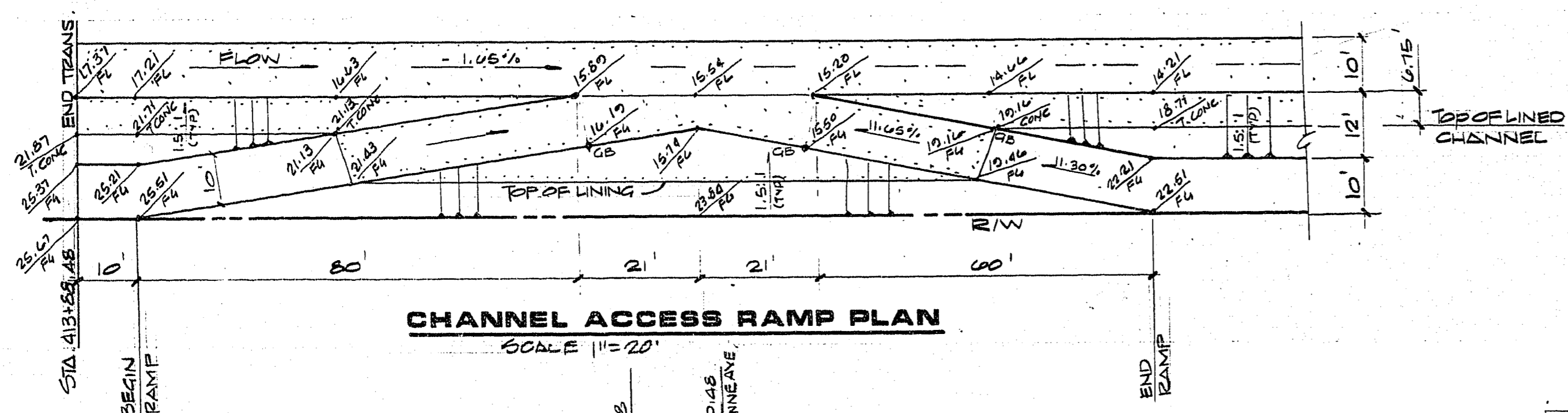


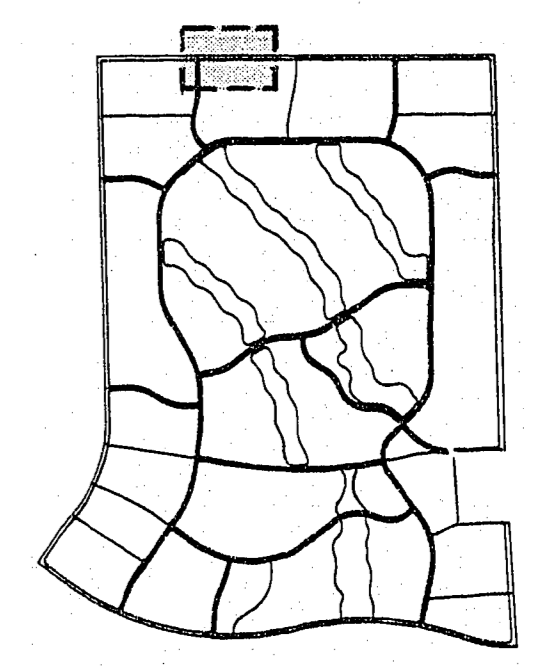
JOB NO. 660.009 9-14-87



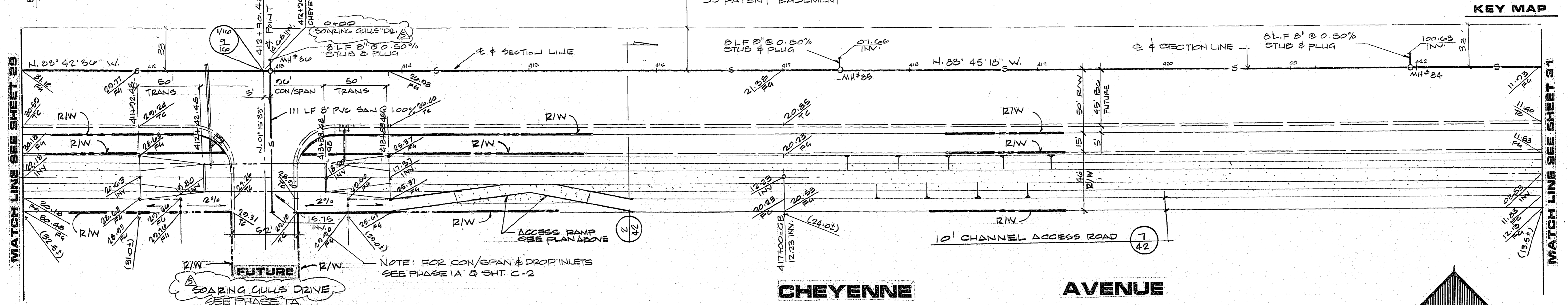
**PROFILE**  
 SCALE: HORIZ. 1"=40'  
 VERT. 1"=8'



**CHANNEL ACCESS RAMP PLAN**  
 SCALE 1"=20'



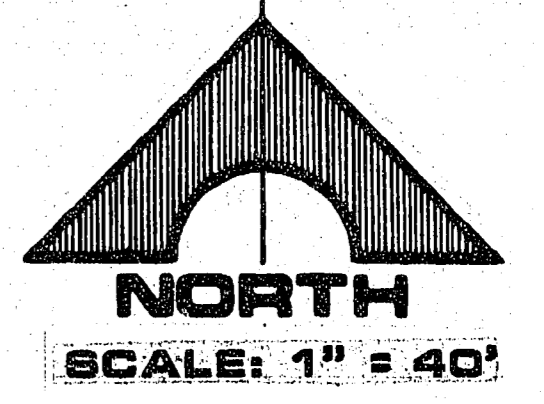
**KEY MAP**



**CHEYENNE AVENUE**

NOTE: FOR CON/SPAN & DROP INLETS SEE PHASE 1A & SHT. C-2

**APPROVAL**  
*[Signature]*  
 CLV CHIEF LAND DEVELOPMENT  
 DATE 9.22.87



REV	DATE	DESCRIPTION
1	10-18-87	ADDED SERVICE STUBS & MANHOLES
2	11-16-87	GENERAL REVISIONS
3	11-23-87	REVISED CHANNEL PROFILE
4	12-7-87	ADDED CHANNEL ACCESS DAMP
5	12-14-87	REVISED TITLE & ST. NAMES

RECOMMENDED BY: *[Signature]*  
 DATE: 11/17/87  
 G.C. WALLACE, INC.  
 Engineering/Architecture  
 1555 SOUTH RAINBOW BLVD. LAS VEGAS, NEVADA 89102

R A HOMES  
 DESERT SHORES - PHASE 1  
 CHEYENNE AVENUE  
 STA 411+00.00 TO STA. 423+00.00

SHEET  
**30**  
 OF 45 SHEETS

1074-1248-1