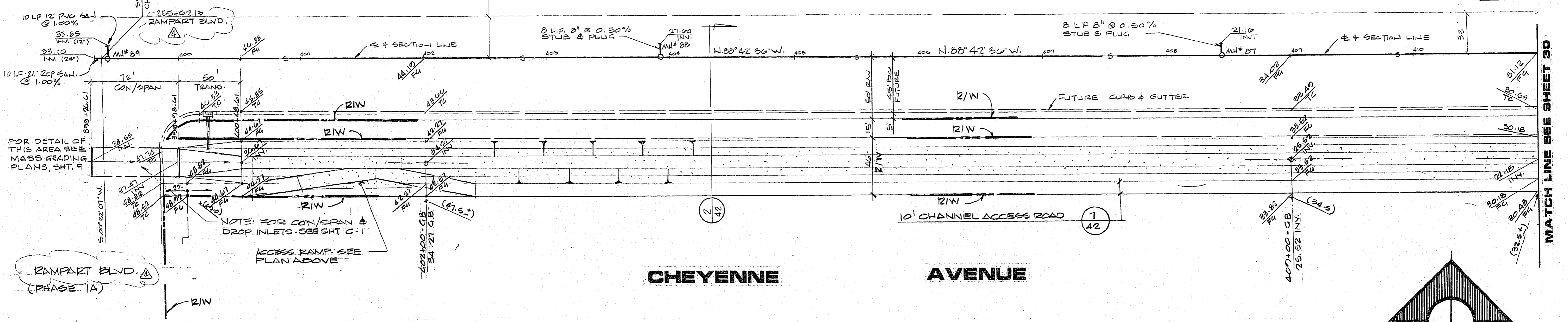
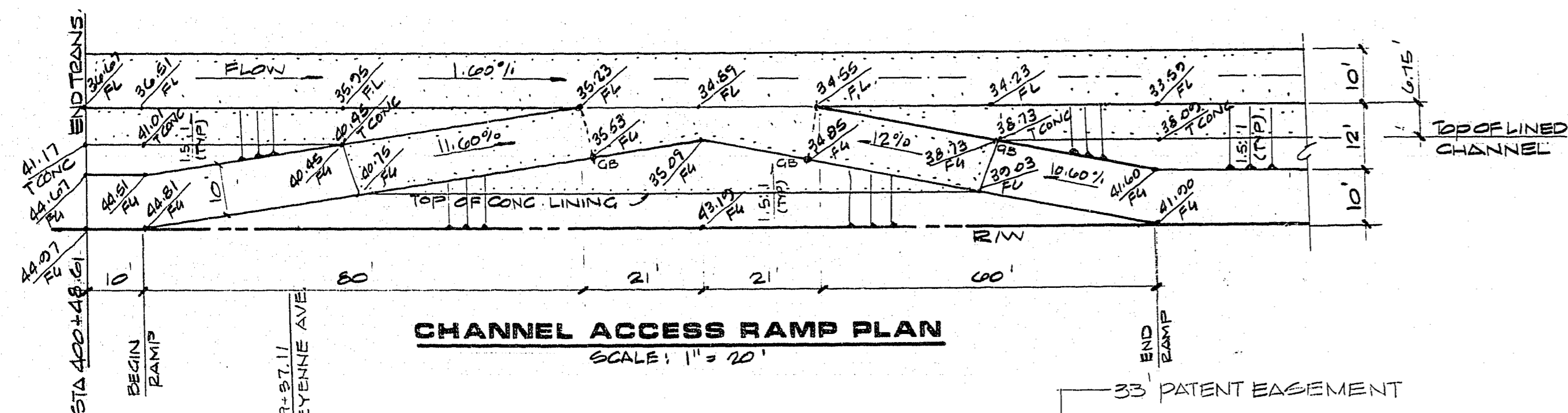
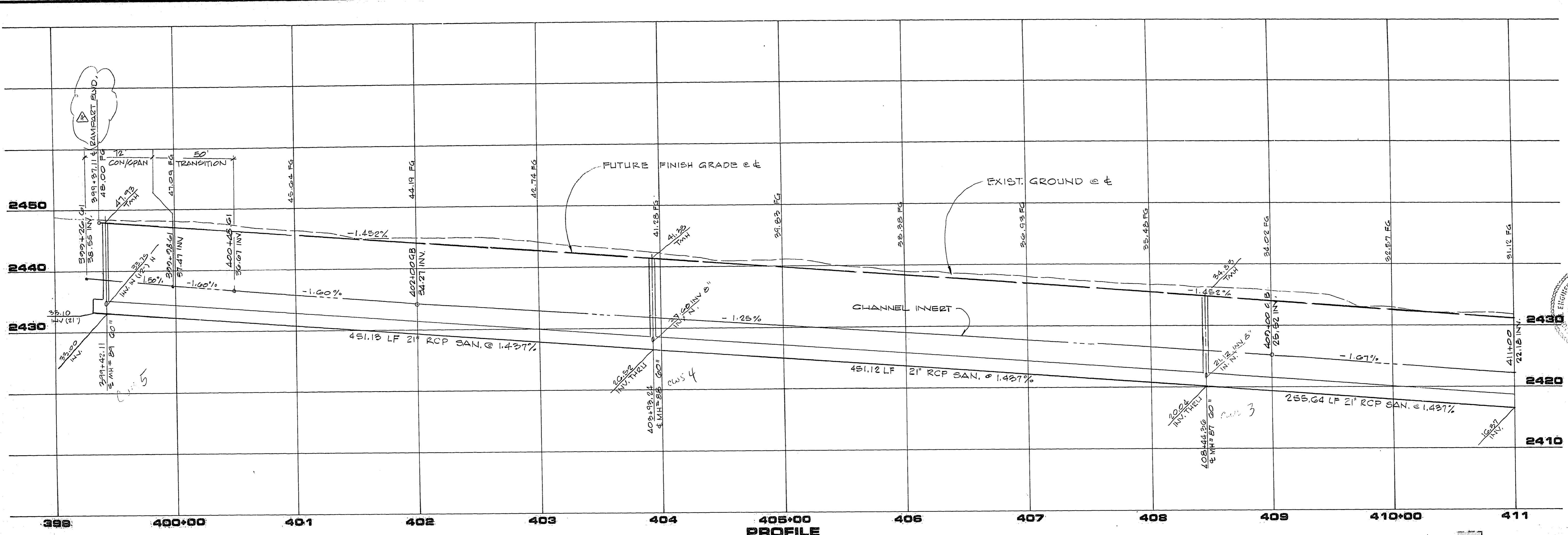


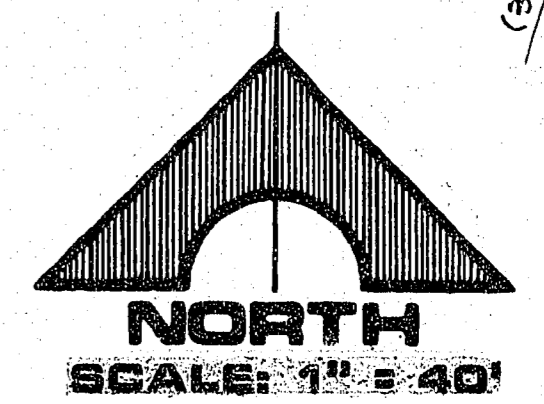
JOB NO. 660.009 9-14-87

RAMPART BLVD. (PHASE 1A)



FOR DETAIL OF THIS AREA SEE MASS GRADING PLANS, SHT. 9

NOTE: FOR CON/SPAN & DROP INLETS, SEE SHT. C-1

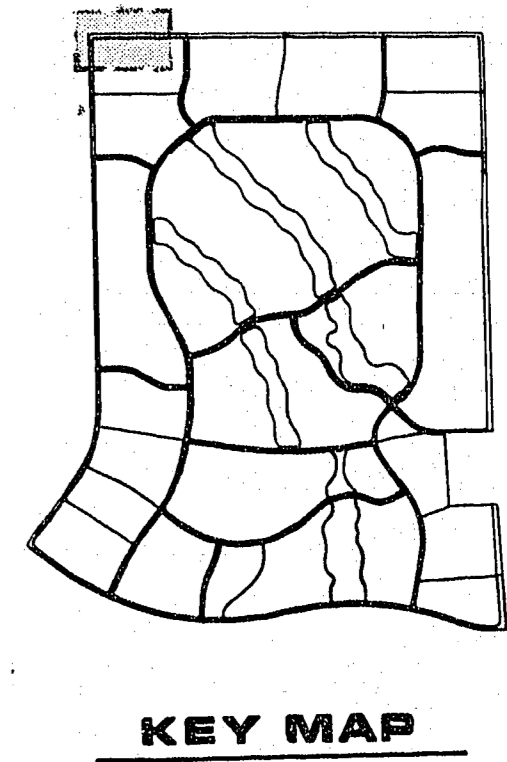


APPROVAL

[Signature]
 CLV CHIEF LAND DEVELOPMENT

DATE: 9-22-87

MATCH LINE SEE SHEET 30



REV	DATE	DESCRIPTION
1	10-1-87	ADDED SEWER STUBS @ MANHOLE
2	1-12-88	REVISED CHANNEL PROFILE
3	1-1-88	ADDED CHANNEL ACCESS RAMP
4	3-1-88	MOD. PROFILE, TITLE # 21 MANHOLES

RECOMMENDED BY: *[Signature]*
 DATE: 1-22-88
 R.E. NO. 3948

G.C. WALLACE, INC.
 Engineering/Architecture

1555 SOUTH RAINBOW BLVD. LAS VEGAS, NEVADA 89102

RA HOMES
 DESERT SHORES - PHASE 1
 CHEYENNE AVENUE
 STA. 399+37.11 TO STA. 411+00.00

SHEET
29
 OF 43 SHEETS

1074-1248-1