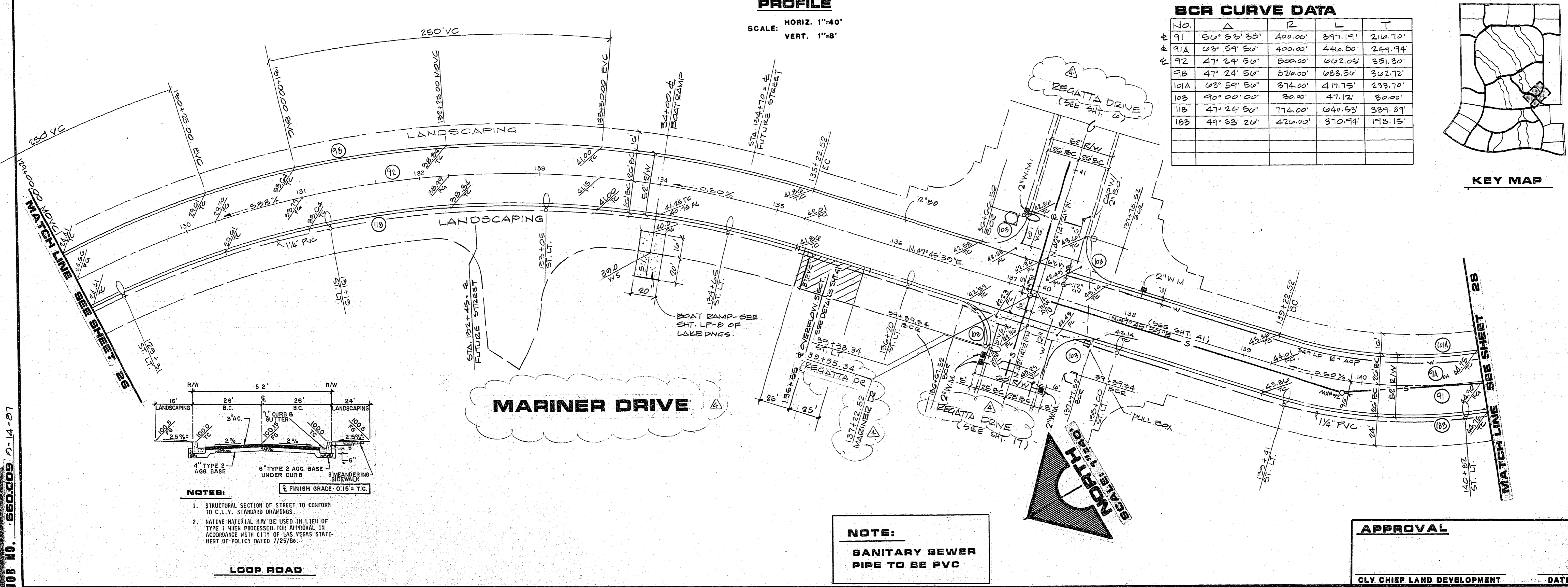
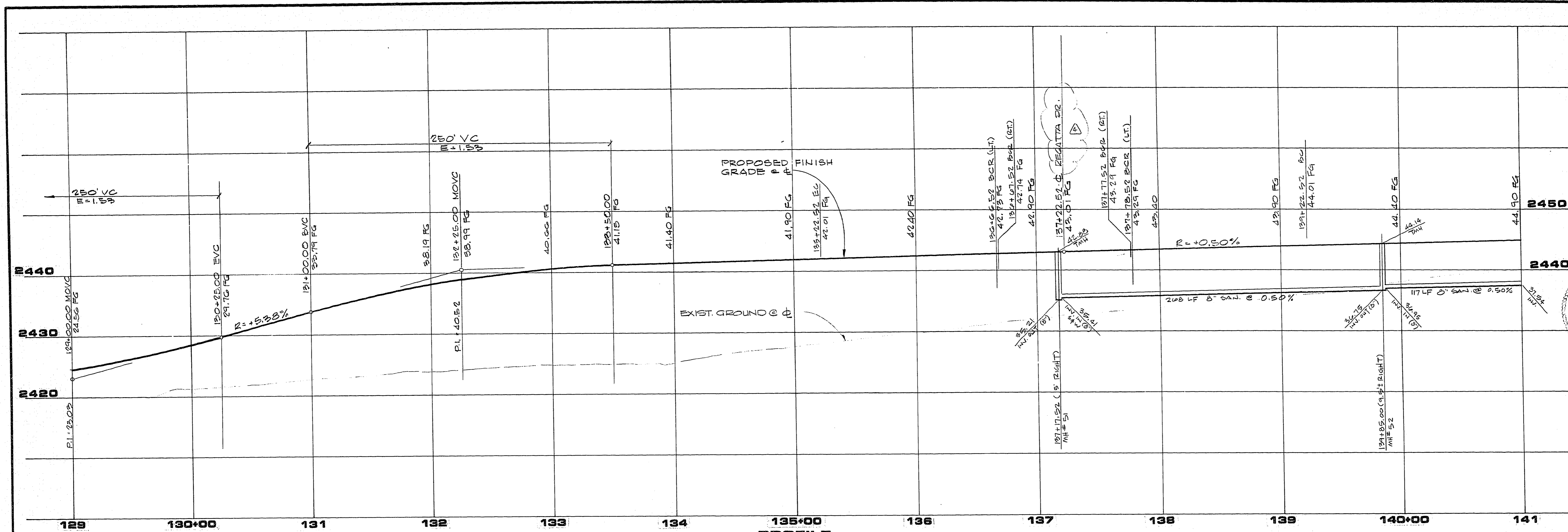
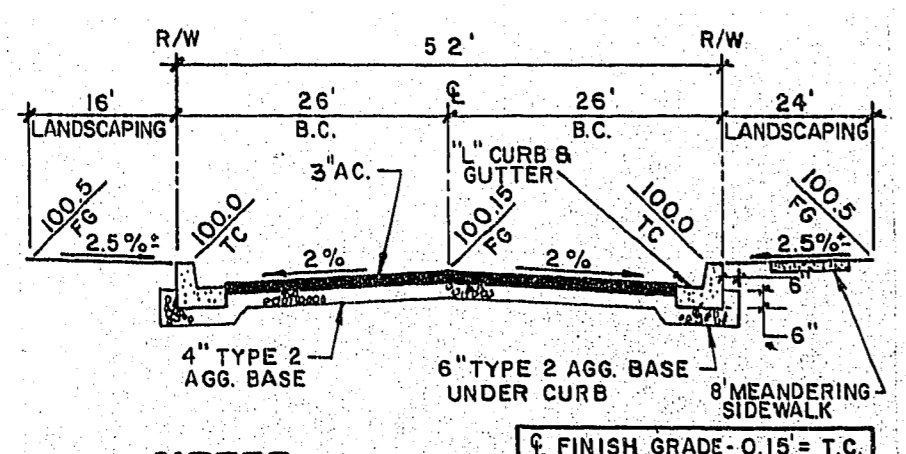
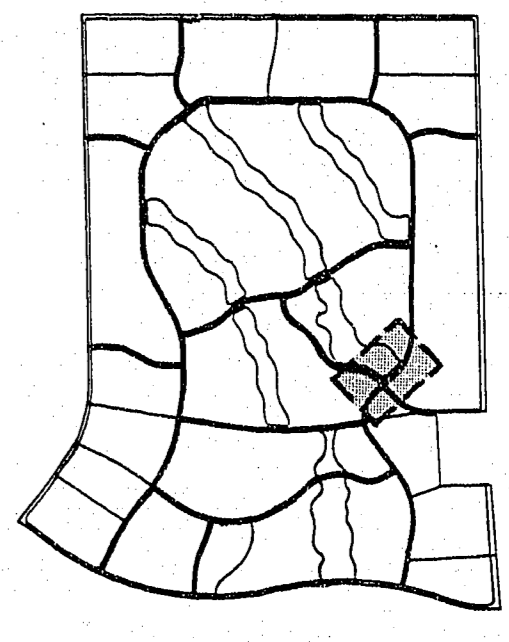


JOB NO. 660.009 0-14-87



BCR CURVE DATA

NO.	Δ	R	L	T
91	56° 53' 38"	400.00	397.19'	216.70'
91A	63° 59' 50"	400.00	446.80'	249.94'
92	47° 24' 50"	800.00	662.05'	351.30'
98	47° 24' 50"	826.00	683.50'	362.72'
101A	63° 59' 50"	374.00	417.75'	233.70'
103	90° 00' 00"	30.00	41.72'	30.00'
118	47° 24' 50"	774.00	640.53'	339.89'
183	49° 53' 26"	426.00	370.94'	193.15'



NOTE:
SANITARY SEWER PIPE TO BE PVC

APPROVAL
CLV CHIEF LAND DEVELOPMENT

REVISIONS

REV	DATE	DESCRIPTION
1	11/15/87	GENERAL REVISIONS
2	11/16/87	ST. CL. CORRECT
3	4/13/88	ADJUSTED CURVE DATA
4	5/14/88	REPROBATED TITLE & CH. NAMES

3543 F-19-88
R.E. NO.

RECOMMENDED BY: [Signature]
DATE: 11/17/87

1595 SOUTH RAINBOW BLVD. LAS VEGAS, NEVADA 89102
G.C. WALLACE, INC.
Engineering/Architecture

RA HOMES
DESERT SHORES - PHASE 1
MARINER DRIVE
STA. 129+00.00 TO STA 141+00.00

SHEET 27
OF 43 SHEETS

DATE: 1071-1248-7